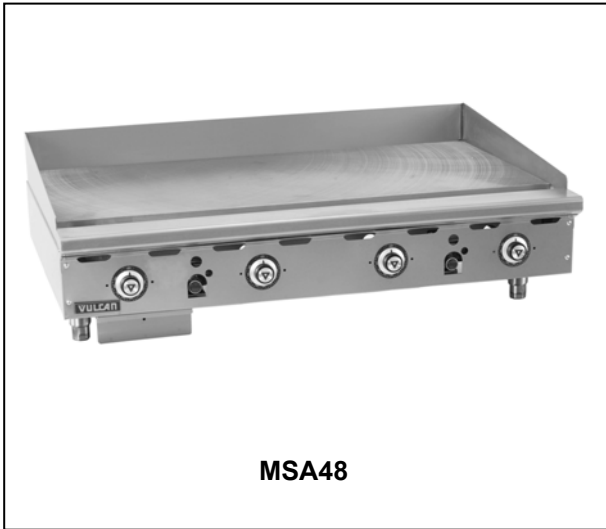


MSA SERIES LOW PROFILE HEAVY DUTY GAS GRIDDLE



MSA48



- MSA24** 24" w x 24" d griddle plate
- MSA36** 36" w x 24" d griddle plate
- MSA48** 48" w x 24" d griddle plate
- MSA60** 60" w x 24" d griddle plate
- MSA72** 72" w x 24" d griddle plate

STANDARD FEATURES

- Stainless steel front, sides and 4" front top ledge.
- Fully welded stainless and aluminized steel body Frame.
- 11" low profile cooking height on 4" adjustable legs.
- 1" thick polished steel griddle plate welded to 4" stainless steel back and tapered side splashes.
- One 27,000 BTU/hr. "U" shaped aluminized steel burner for every 12" of griddle width.
- One embedded snap action thermostat per burner.
- Temperature adjusts from 200° to 550° F.
- One pilot safety valve for every two burners. Safety will completely shut off gas to pilot and burners if pilot extinguishes.
- Manual ignition.
- 3½" wide stainless steel front grease trough.
- Large capacity 6⅞" wide x 30" deep x 2½" high stainless steel grease drawer.
- ¾" rear gas connection and gas pressure regulator.
- One year limited parts and labor warranty.

SPECIFICATIONS:

Low profile heavy duty gas griddle, Vulcan model No. _____ Stainless steel front, sides and 4" front top ledge. Fully welded stainless and aluminized steel body frame. 11" low profile cooking height on 4" legs. 1" thick polished steel griddle plate welded to stainless steel back and tapered side splashes. One 27,000 BTU/hr. "U" shaped aluminized steel burner and mechanical snap action thermostat for each 12" of griddle width. Temperature adjusts from 200° to 550° F. One pilot safety for every two burners. 3½" wide stainless steel grease trough. Large capacity 6⅞" wide x 30" deep x 2½" high stainless steel grease drawer. ¾" rear gas connection and gas pressure regulator. Exterior dimensions _____ "w x 33" d x 15½" h on 4" legs.

CSA design certified. NSF listed.

SPECIFY OF GAS WHEN ORDERING.
SPECIFY ALTITUDE WHEN ABOVE 2,000 FT.

OPTIONS

- Stainless steel stand with marine edges and casters.
- Leg lengths: 6", 8", 10" and 12".
- 4" and 6" flanged legs.
- Chrome plated cooking surface.
- Rear grease trough.
- Full or partially grooved griddle plates.
- 30" deep plate
- Cutting board, condiment rail, plate rail, towel bar, knob guards and banking strip accessories.
- Under device gas connection
- Stubby bullnose
- Splash height and plate divider variations

MSA SERIES LOW PROFILE HEAVY DUTY GAS GRIDDLE

IMPORTANT:

- A gas pressure regulator supplied with the unit must be installed;
 - Natural Gas 5.0" (127 mm) W.C.
 - Propane Gas 10.0" (254 mm) W.C.
- All models require a 6" (152 mm) clearance at both sides and rear adjacent to combustible and 0" from non-combustible constructions. All models require a 4" (102mm) bottom clearance and must be installed with minimum 4" legs.
- These units are manufactured for installation in accordance with ANSI/NFPA-70, National Electrical code.

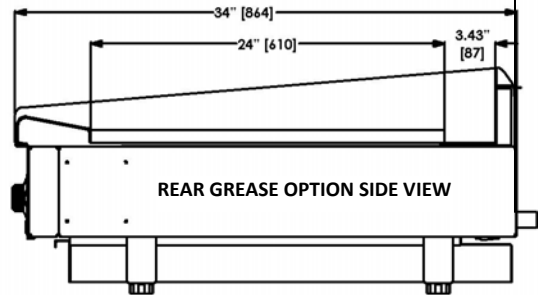
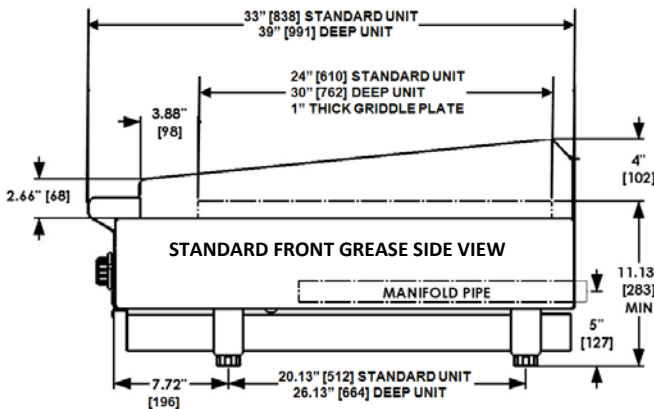
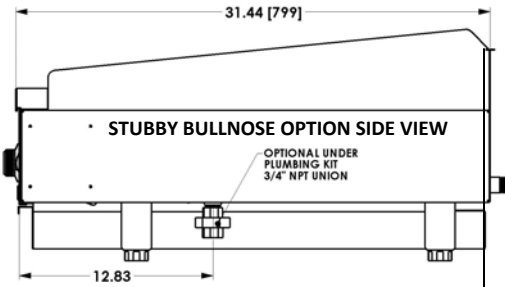
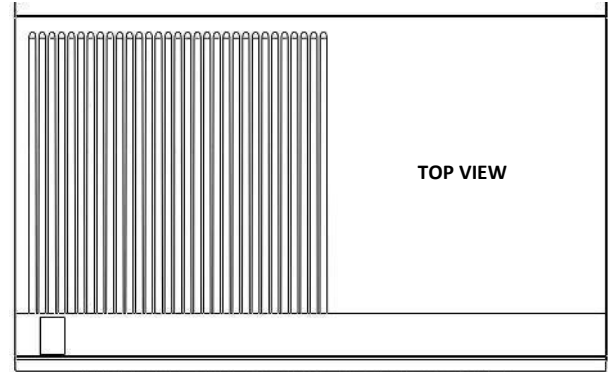
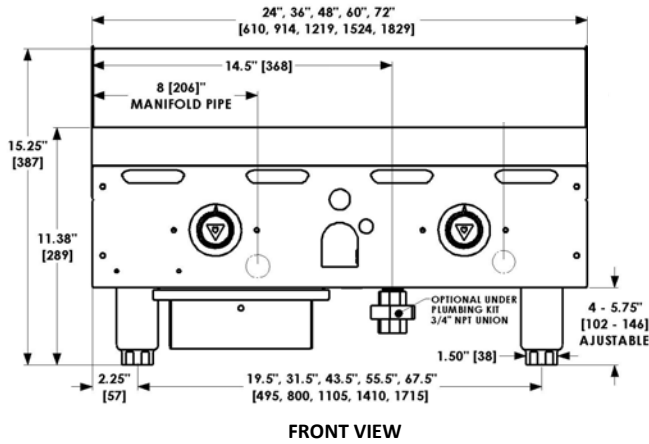
An adequate ventilation system is required for Commercial Cooking Equipment (NFPA No. 96). Information may be obtained by writing to the National Fire Protection Association, Batterymarch Park, Quincy, MA 02169.

- These units are manufactured for installation in accordance with National Fuel Gas Code, ANSI-Z223.1/NFPA #54 (latest edition). Copies may be obtained from The American Gas Association, Accredited Standards Committee Z223 @ 400 N. Capital St. NW, Washington, DC 20001, or the Secretary Standards Council, NFPA, 1 Batterymarch Park, Quincy, MA 02169-7471.

NOTE: In The Commonwealth of Massachusetts

All gas appliances vented through ventilation hood or exhaust system equipped with a damper or with a power means of exhaust shall comply with 248 CMR.

- This appliance is manufactured for commercial installation only and is not intended for home use.



MODEL	WIDTH	DEPTH	OVERALL HEIGHT*	WORKING HEIGHT*	NO. OF BURNERS	TOTAL BTU/HR.	NO. OF DRAWERS**	APPROX. SHIP. WT.
MSA24	24"	33"	15 1/4"	11 3/8"	2	54,000	1	285 lbs./129 kg
MSA36	36"	33"	15 1/4"	11 3/8"	3	81,000	1	400 lbs./181 kg.
MSA48	48"	33"	15 1/4"	11 3/8"	4	108,000	1	480 lbs./218 kg.
MSA60	60"	33"	15 1/4"	11 3/8"	5	135,000	2	650 lbs./295kg
MSA72	72"	33"	15 1/4"	11 3/8"	6	162,000	2	790 lbs./358kg

*These are nominal dimensions and can vary by +1.75" with adjustable legs. Overall height will be 17.25" with 6" backsplash option.

**All rear grease option griddles have only one (1) grease drawer on the left side.

NOTE: In line with its policy to continually improve its products, Vulcan-Hart Company reserves the right to change materials and specifications without notice.