

Hood Type Dishwasher AM900



Brand

HOBART

Description

Hood Type Dishwasher

Model

AM900

Origin

China

Application

- For dishwashing room of hotel, restaurant, employee dining

Function

- Washing wares, such as plates, dishes, cups, glasses, utensil

Wash capacity

- 60 racks/h (max. 1080 plates/h (10" plate), 1500 glasses/h (25 cells/rack))
 - 40 racks/h (max. 720 plates/h (10" plate), 1000 glasses/h (25 cells/rack))
 - 30 racks/h (max. 540 plates/h (10" plate), 750 glasses/h (25 cells/rack))

Specification

- Loading height: 440mm
 - Rack size: 500×500 mm
 - Wash temperature: 55-60℃
 - Rinse temperature: 82-90℃
 - Water consumption: 2.5L/rack
 - Wash tank volume: 22L
 - Wash pump: 0.73kW
 - Tank heating: 3kW
 - Booster heating: 12kW
 - Total loading: 16kW
 - Voltage: 380V/50Hz/3N~
 - Dimensions (W×D×H): 636×740×1510mm
 - Net weight: 120kg

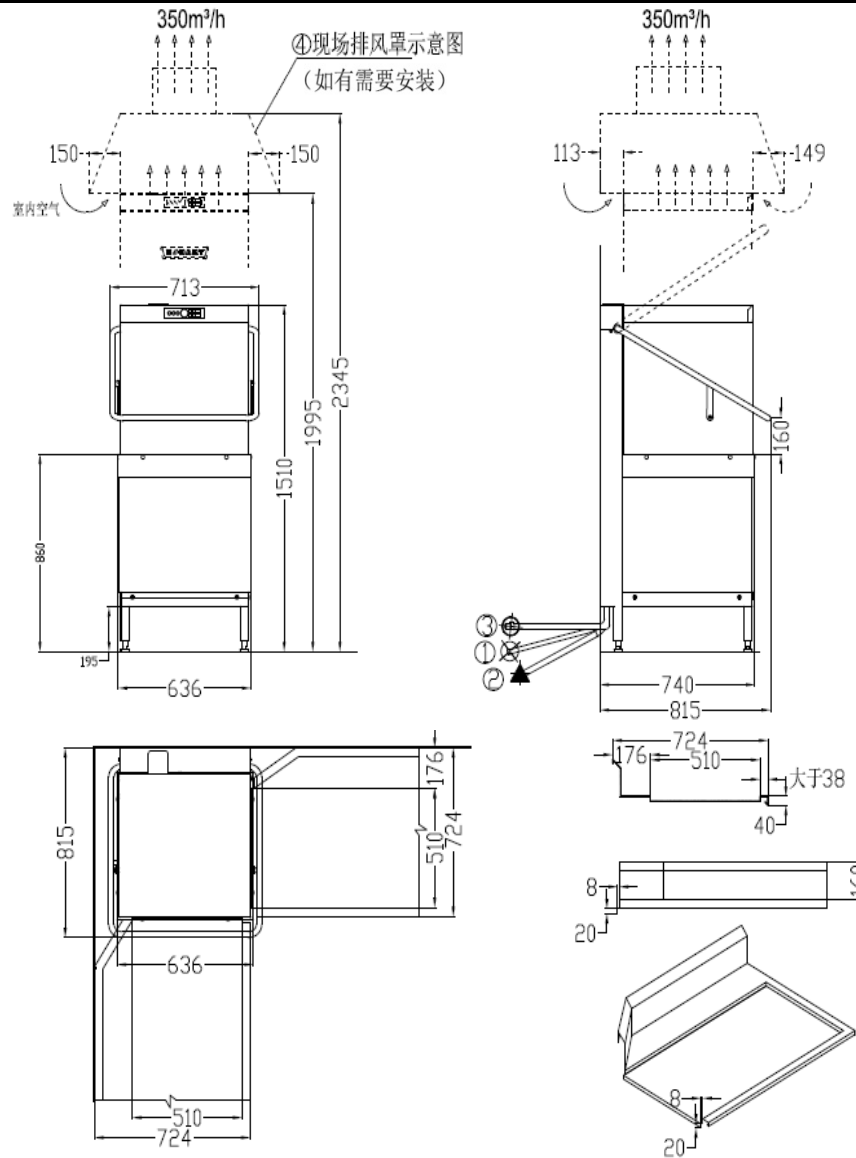
Features & benefits

- Smartronic and single button control with alerting and fault diagnosis
 - Colour coded status indication with additional indication of cycle status
 - Hood insulation, retain valuable energy, reduce noise
 - Enclosed 4 side hood design, avoiding loss of energy/steam
 - Automatic door cycle start switch, simple to use
 - Thermostop feature, ensure rinse temperature above 82℃ per washing cycle
 - Anti-clogging wide angle nozzle fan avoids spray shadows and improves the wash results.
 - Optimum hygienic safety by one piece deep draw tank with round corner
 - Rinse pressure pump included, independent from flow pressure
 - **Thermolabel test feature (71℃ test) by temperature setting**

Options:

- GeniusX² fine filter system ensures a perfect and continuous wash result, together with Drain pump, and automatically Self-clean before auto-drain (AM900-HG)
- Water softener, provides effective protection of the dishwasher from building up of limescale and ensure smooth operation and effective wash result (AM900-HGS)

Hood Type Dishwasher AM900



Installation Parameters

① water filling	pipe diameter	G3/4"
	pressure	50~1000KPa
	filling temperature	10~60℃
	min. flow rate	150 L/Hr
② electrical connection	voltage	380V/50Hz/3N~
	total loading	16kW
	fuse	3×36A
	cross section	6mm ²
	power cord length	2000mm
③ drain	pipe diameter	20mm
④ ventilation	offered by third party	> 350m ³ /h (airtight room)

* If there's on-site general ventilation subject to conformance with JGJ64-89, no ventilation canopy is needed.

Note:

- (a) Must install the main switch to disconnect electrical power to the machine and manual shut off valves for water.
- (b) All drain and ventilation connections must be made in accordance with national codes.
- (c) Pipework external of the machine is to be done on site.