

Washing Technology

Fully Automatic Systems

Different Washing Systems

Conventional:

Manual Processing of

- Dishware
- Silverware
- Trays

Semi - Automatic:

Manual Processing of

- Dishware

Automatic Processing of

- Silverware and
- Trays

Fully Automatic:

Automatic Separation &
Processing of

- Plates
- Bowls
- Silverware
- Trays

Characteristics of Fully Automatic

HOBART

- ➔ Outstanding Wash & Draying Results
- ➔ Safe & Proven Technology
- ➔ Fewer Operators Required
- ➔ Lower Consumption of Water, Energy, Chemicals
- ➔ Observation and Monitoring of the Hygienic Parameter
- ➔ Automatic Sorter for Tray Sets

The Cleaning Process

HOBART

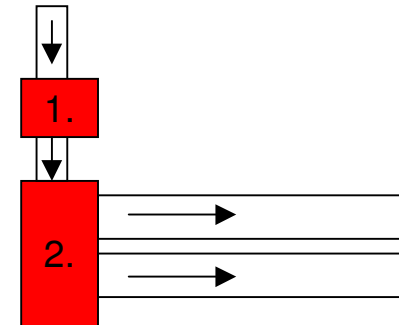
Parts Input	➔	Automatic
Washing	➔	Circulating Process at 60° C & Chemicals
Cleaning	➔	With Hot Water at 85° C
Drying	➔	Heated Air 55° C
Tray Stacking	➔	Automatic
Plates, Bowls and Silverware Collection	➔	Manual (Optional Plates and Silverware Automated Switch)

The Fully Automatic FTN

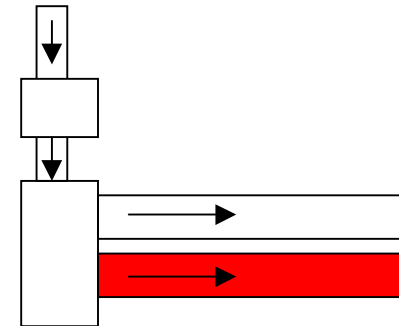
HOBART

The Fully Automatic System Consists of:

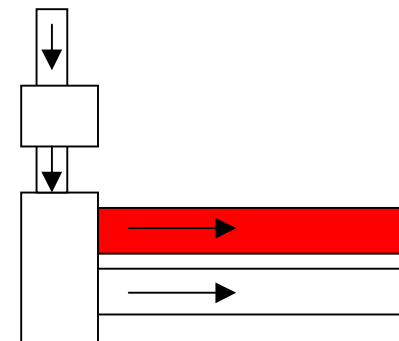
The Silverware Collection Magnet (1.)
and the Automatic Separation (2.)



The Plate / Bowl Cleaning Machine

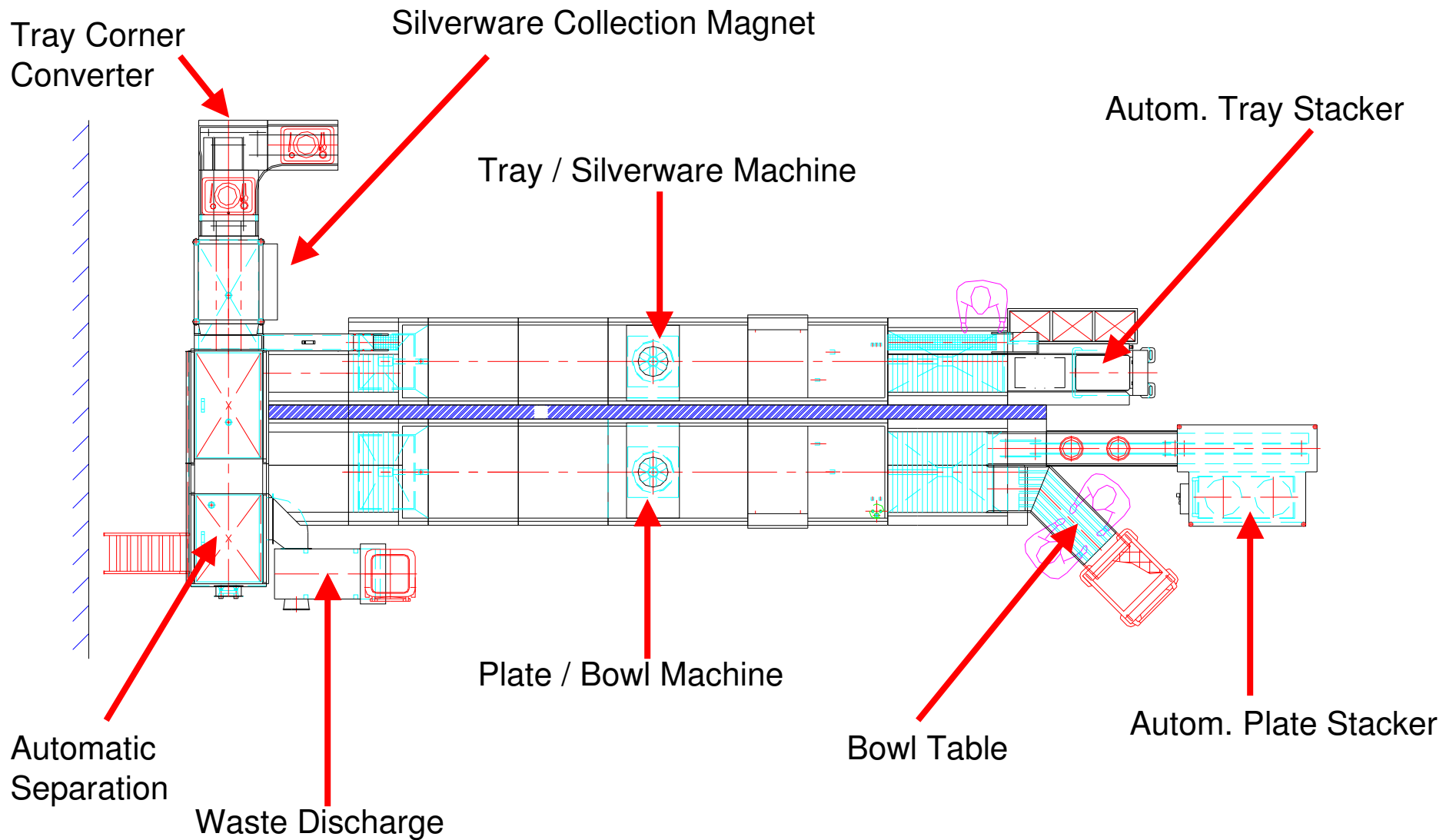


Tray / Silverware Cleaning Machine



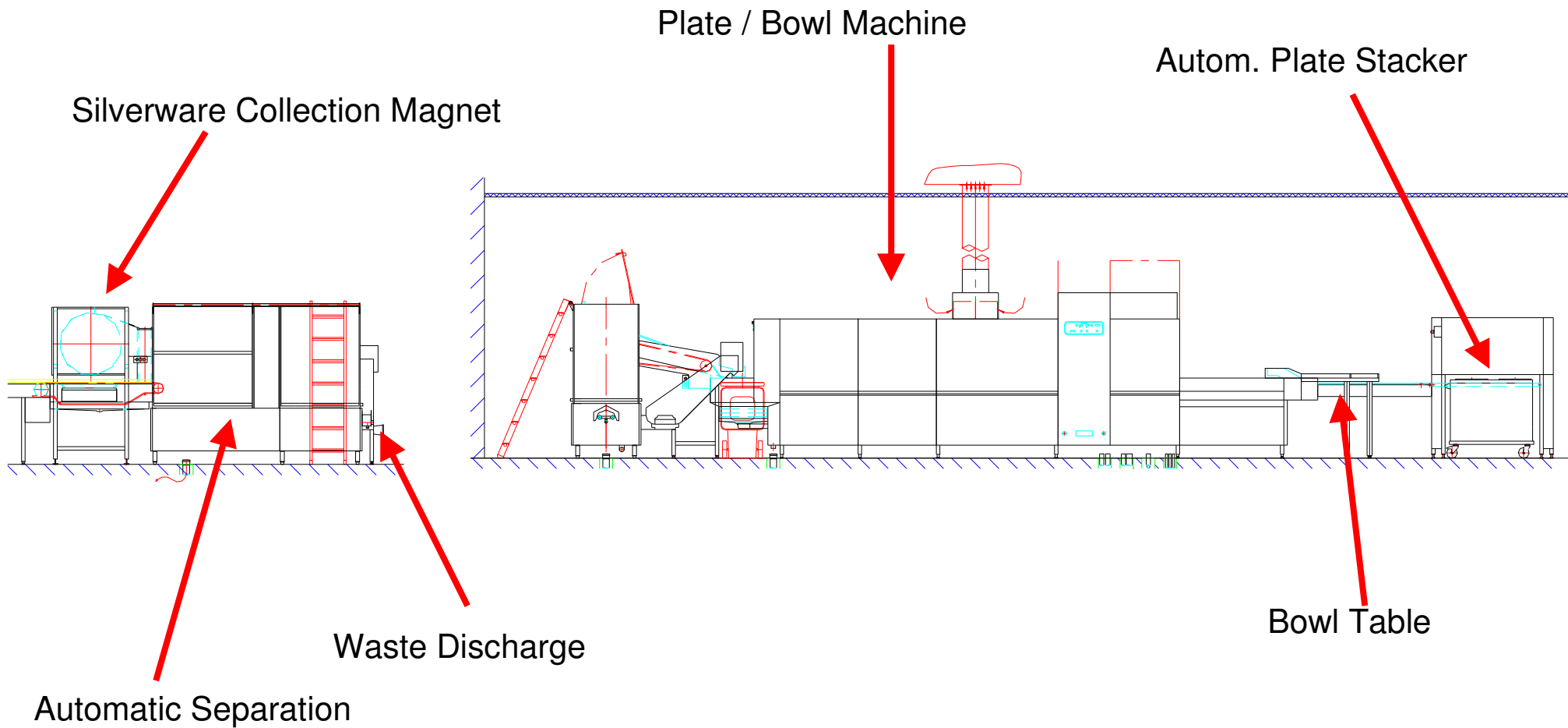
The Components

HOBART



The Components

HOBART



Automatic Sorter

HOBART

- ➔ Reliable Automatic Separation
- ➔ Transport of the Silverware via the Collection Magnets
- ➔ Crosswise Tray Loading Conveyor
- ➔ Automatic Cycle and Transport System for Plates, Bowls and Trays
- ➔ Continuous Waste Disposal (Optional)
- ➔ Easy to Clean Through Large Surface Sliding Doors
- ➔ Low Dimensions Through Compact Construction
(2300 x 800 x 1800 mm L x W x H)

Flight-Type Dishwashing Machine Series FTN

HOBART

Tray / Silverware Machine



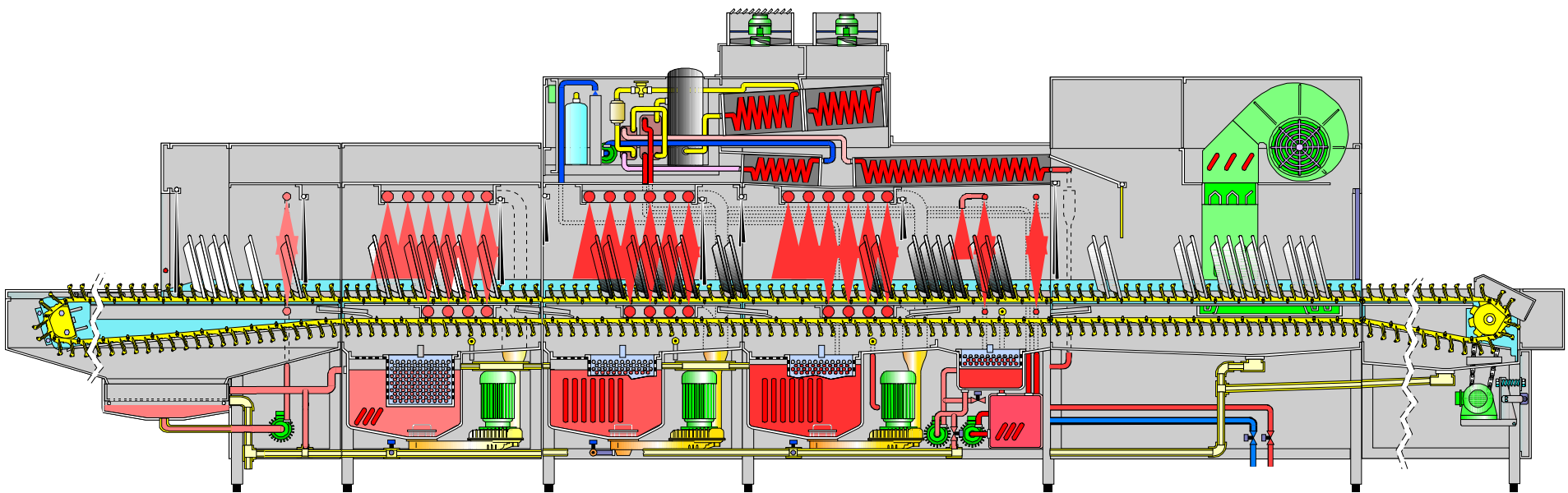
Proven FTN-Technology

Plates / Bowls Machine

Output



Up to 30 Trays / min



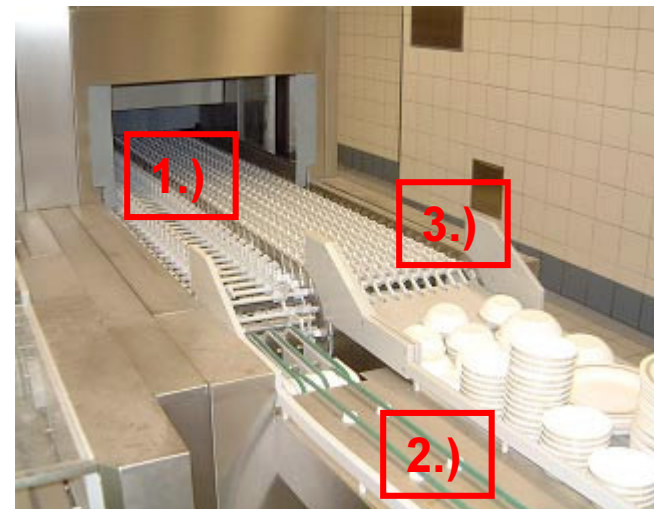
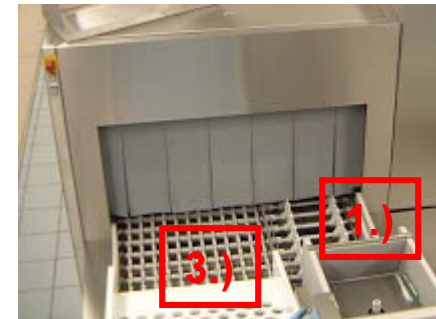
Shown: FTN 2 ES-B-DS 6 With Heat Pump

The Plates / Bowls Machine

HOBART

The Plate / Bowl Machine Will Be Custom Made

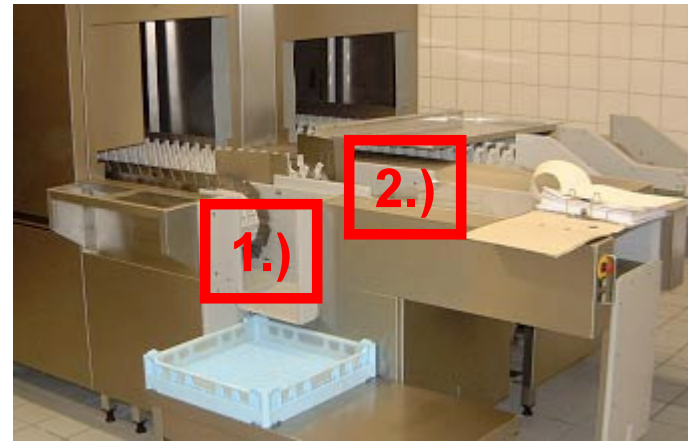
- ➔ Standard Machine Configuration
- ➔ Integrated Plate Track (1)
- ➔ Inlet (2) to the Automatic Plate Stacker (Optional)
- ➔ Integrated Bowl Track With Bowl Table (3)



The Tray / Silverware Machine

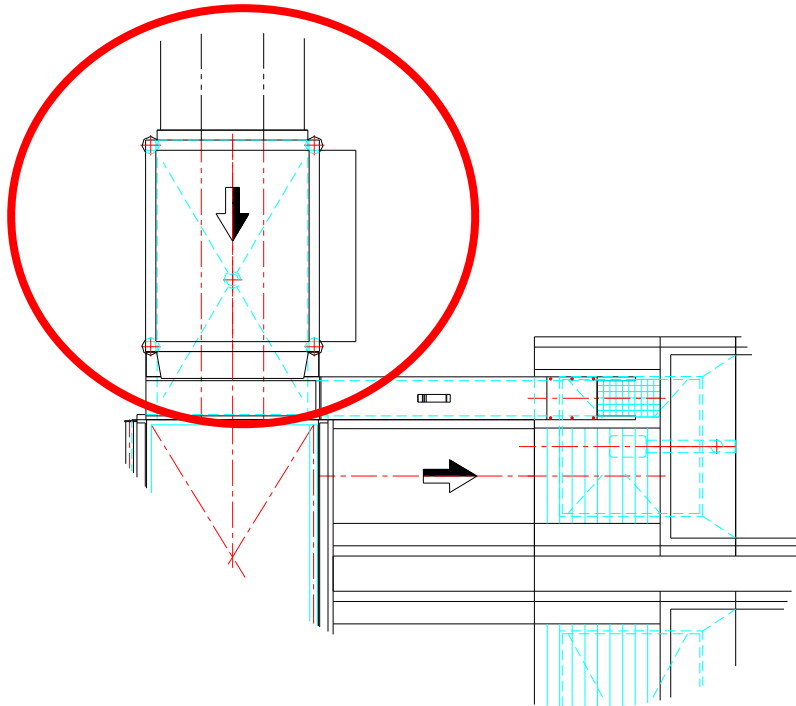
HOBART

- ➔ Standard Machine Configuration
- ➔ Integrated Silverware Track (1)
- ➔ Integrated Tray Track With Automatic Stacker (2)



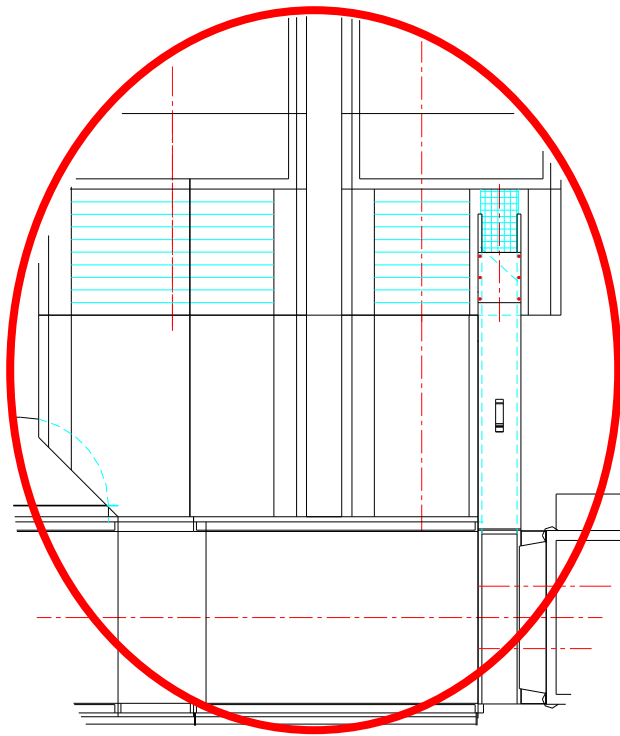
The HOBART Silverware Magnet:

- Safe Operation Through High-Quality Permanent Magnet
- Easy to Clean, Stable Outer Covering
- Robust Composed of in Stainless Steel



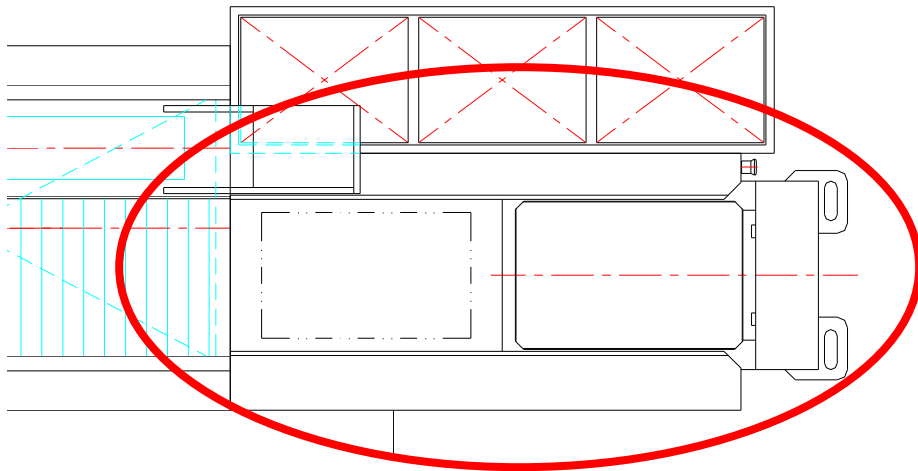
The Tray, Plate and Bowl Input:

- Input up to 30 Tray Set / min
- Simple Design



The Automatic Tray Stacker:

- Safe Operation Through Proven Technology
- Possible For All Tray Measurements
- Fitting for Commercial (Low Modified) Tray Stacks
- Between Batching Optional

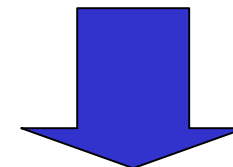


Consumption and Connections

HOBART

Model: **FTN YS-B-DSX, 612/560 (Trays/Silverware)**
(for Trays 530 x 325 mm / 530 x 370 mm)

Heating	Electric	Steam	Heat Pump (E)
Cold Water Consumption (soft)	205 l/h	205 l/h	245 l/h
Warm Water Consumption Filling	356 l	356 l	356 l
Demi Water Consmp. (Silverware)	200 l/h	200 l/h	200 l/h
Electric Connection	80 kW	15 kW	64 kW
Steam Connection		111 kg/h	
Output Air Vol.	1200 m ³ /h	1200 m ³ /h	1400 m ³ /h
Output Air Temp.	38 °C	38 °C	18 °C



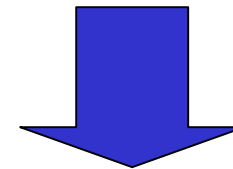
**Air Conditioning
Effect**

Consumption and Connections

HOBART

Model: FTN YS-B-DSX, 806/440 (Plates /Bowls)

Heating	Electric	Steam	Heat Pump (E)
Cold Water Consumption (soft)	520 l/h	520 l/h	540 l/h
Warm Water Consumption Filling	445 l	445 l	445 l
Electric Connection	77 kW	17 kW	52 kW
Steam Connection		104 kg/h	
Output Air Vol.	1600 m ³ /h	1600 m ³ /h	1860 m ³ /h
Output Air Temp.	38 °C	38 °C	18 °C

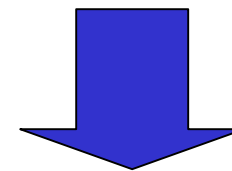


**Air Conditioning
Effect**

Consumption and Connections

HOBART

Model:	Fully Automatic Total		
Heating	Electric	Steam	Heat Pump (E)
Cold Water Consumption (soft)	725 l/h	725 l/h	785 l/h
Warm Water Consumption Filling	801 l	801 l	801 l
Demi Water Consmp. (Silverware)	200 l/h	200 l/h	200 l/h
Electric Connection	157 kW	32 kW	116 kW
Steam Connection		215 kg/h	
Output Air Vol.	2800 m ³ /h	2800 m ³ /h	3260 m ³ /h
Output Air Temperature	38 °C	38 °C	18 °C



**Air Conditioning
Effect**

HOBART PROtronic-PLUS

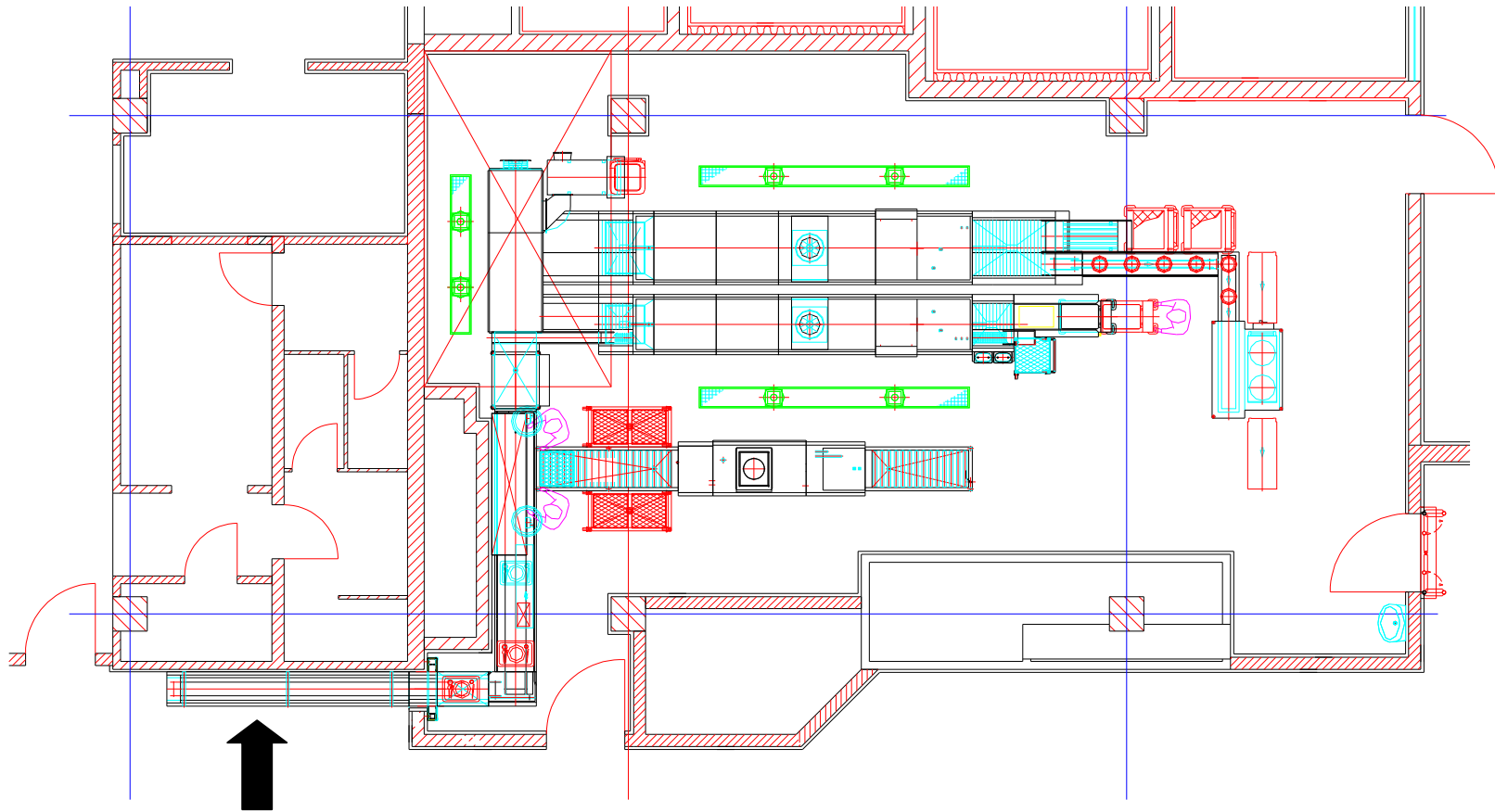


- 4 - Level Display
- Detailed Malfunction Display
- Interface RS 232
- Variable Adjustable Time Cycles

Option: Visualisation With the HOBART- Megatronic

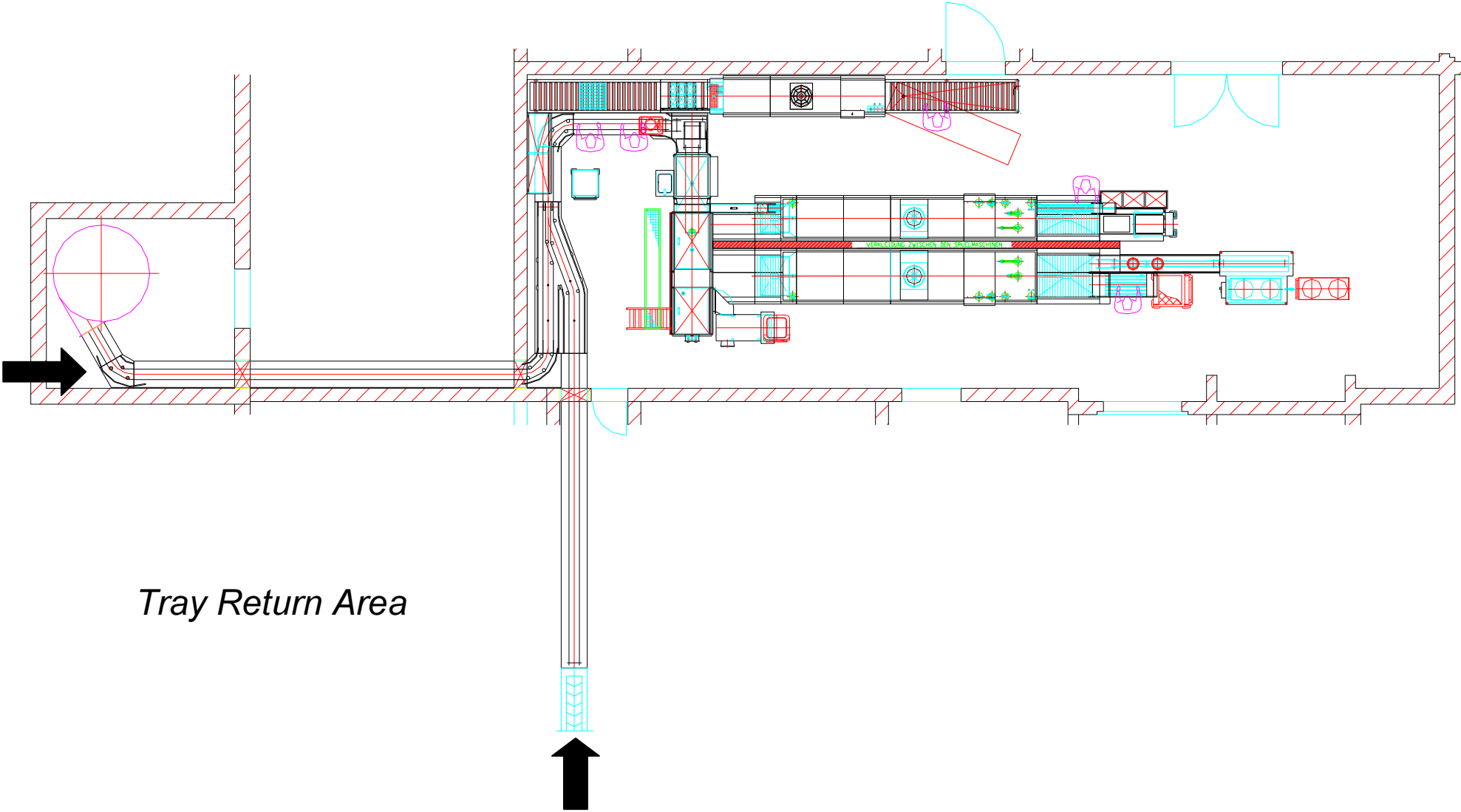
Sample Planning of Fully Automatic

HOBART



Tray Return Area

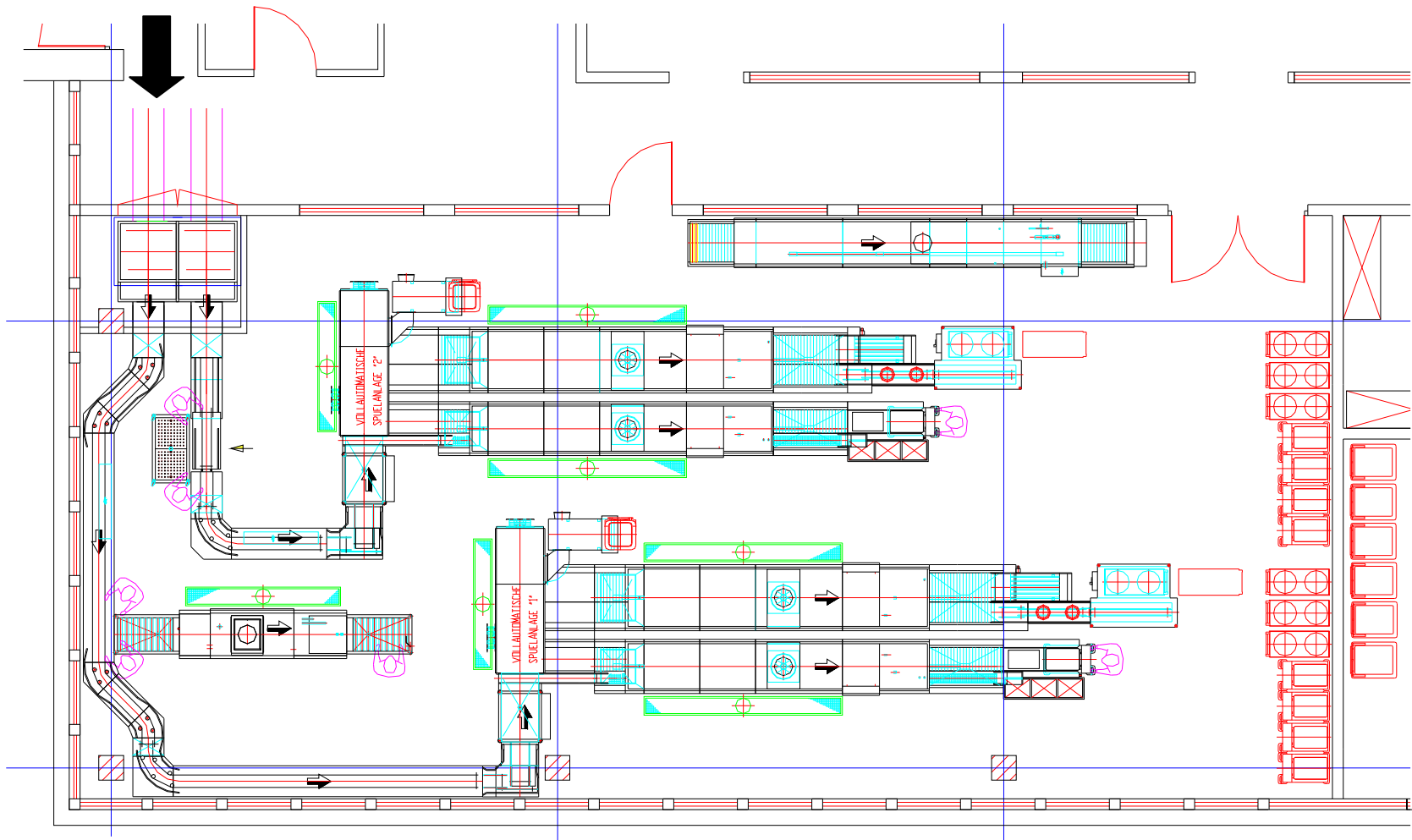
Sample Planning of Fully Automatic



Sample Planning of Fully Automatic

HOBART

Tray Return Area



Fully Automatic University at Siegen

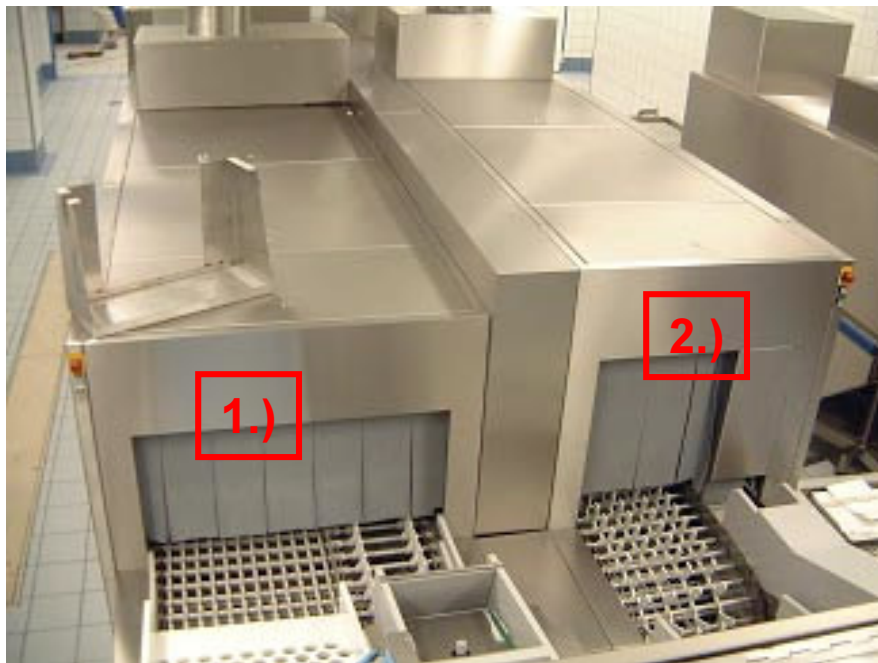


1.) Automatic Sorter

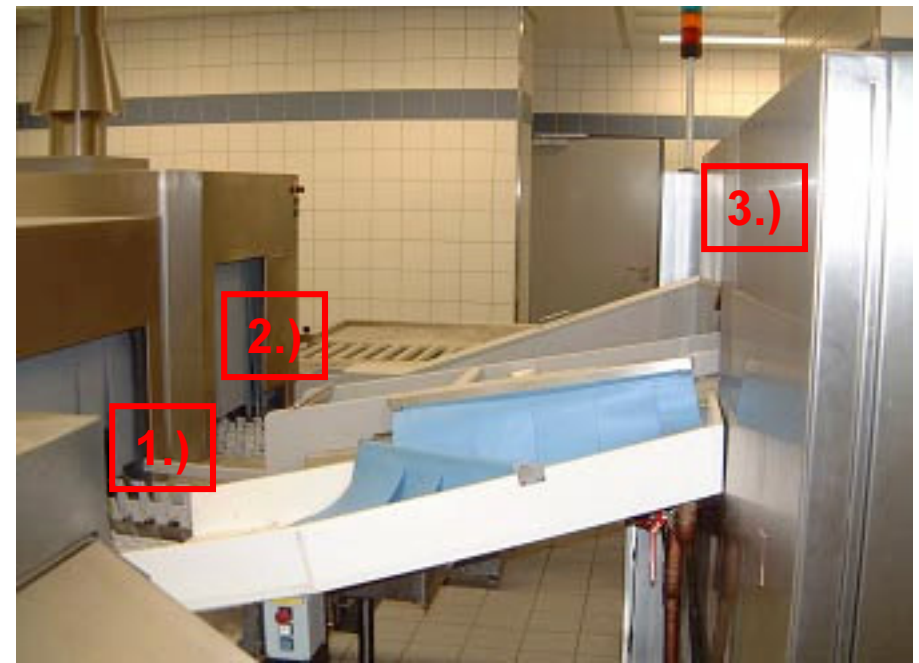
2.) Waste Disposer

3.) Silverware Collection Magnet

Fully Automatic University at Siegen



1.) Auto Loading of Plate and Bowl Machine



2.) Auto Loading of Tray and Silverware Machine

3.) Automatic Separation

Fully Automatic University at Siegen

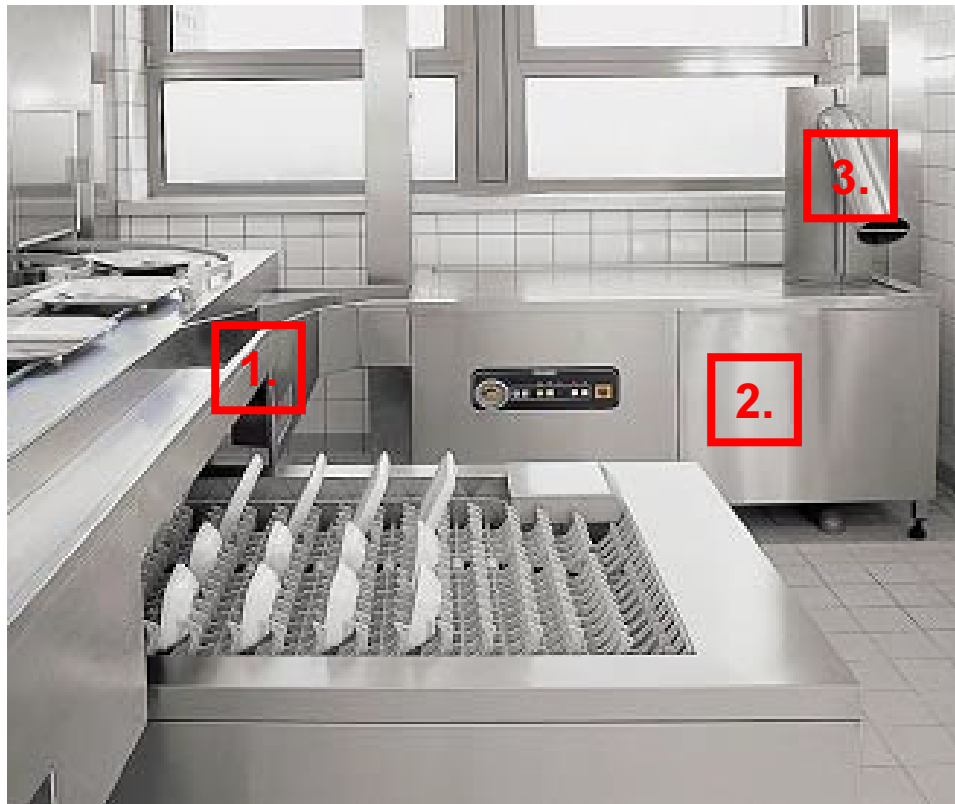


1.) Automatic Plate Stacker



2.) Off-Loading Plate and Bowl Machine

Wet Waste Sanitation Through Integrated ECOLO-Arrangement



1.) Waste Trough

2.) Eco-Compact Arrangement:
Grinding and Compressing
of the Waste

3.) Wet Waste Discharge

Thank You Very Much For Your Attention

Any Quesiton...



Going into the Future

Take-Off with HOBART

Please Visit Our Website at
www.hobart.de