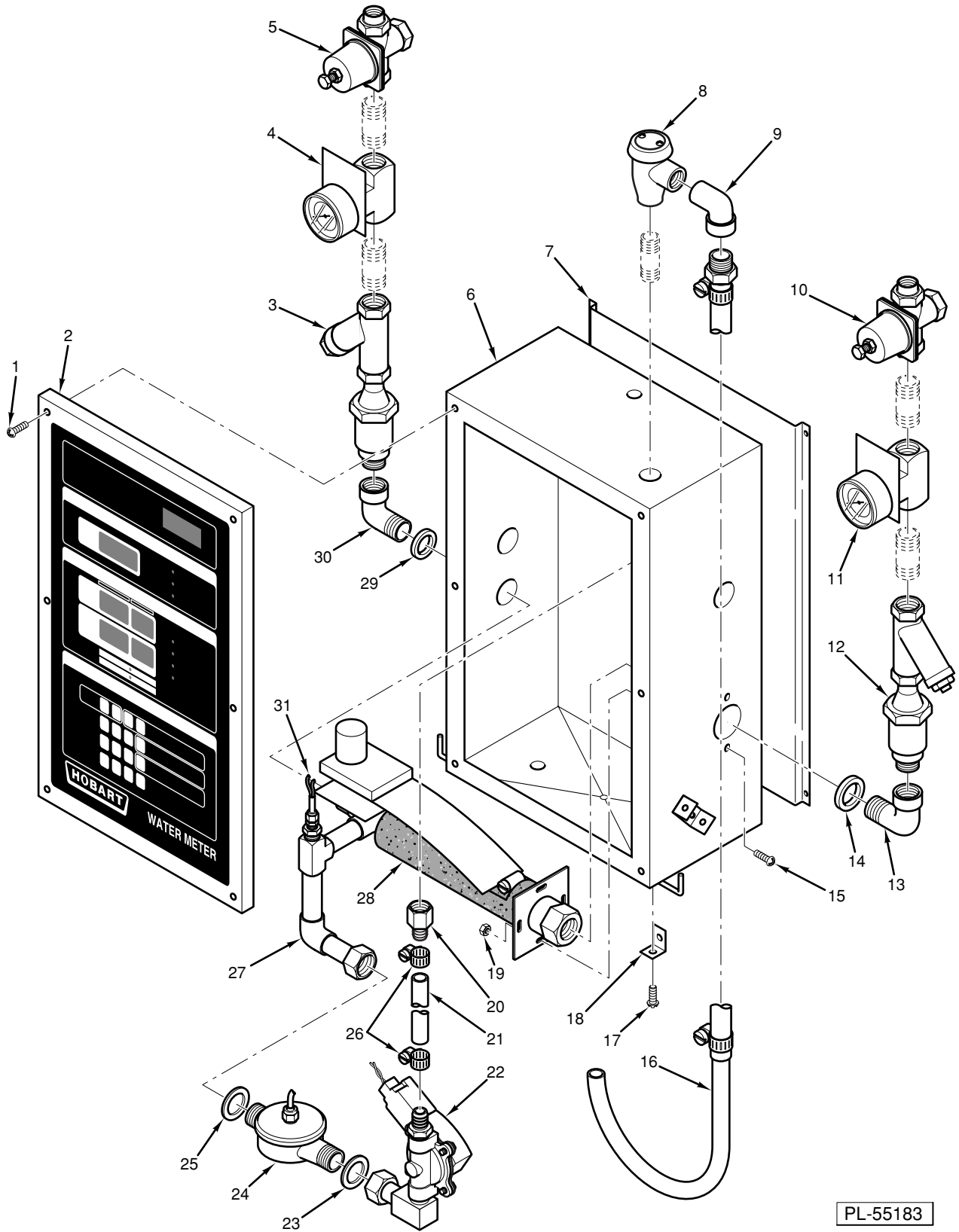




# CATALOG OF REPLACEMENT PARTS



## MODEL HWM WATER METER



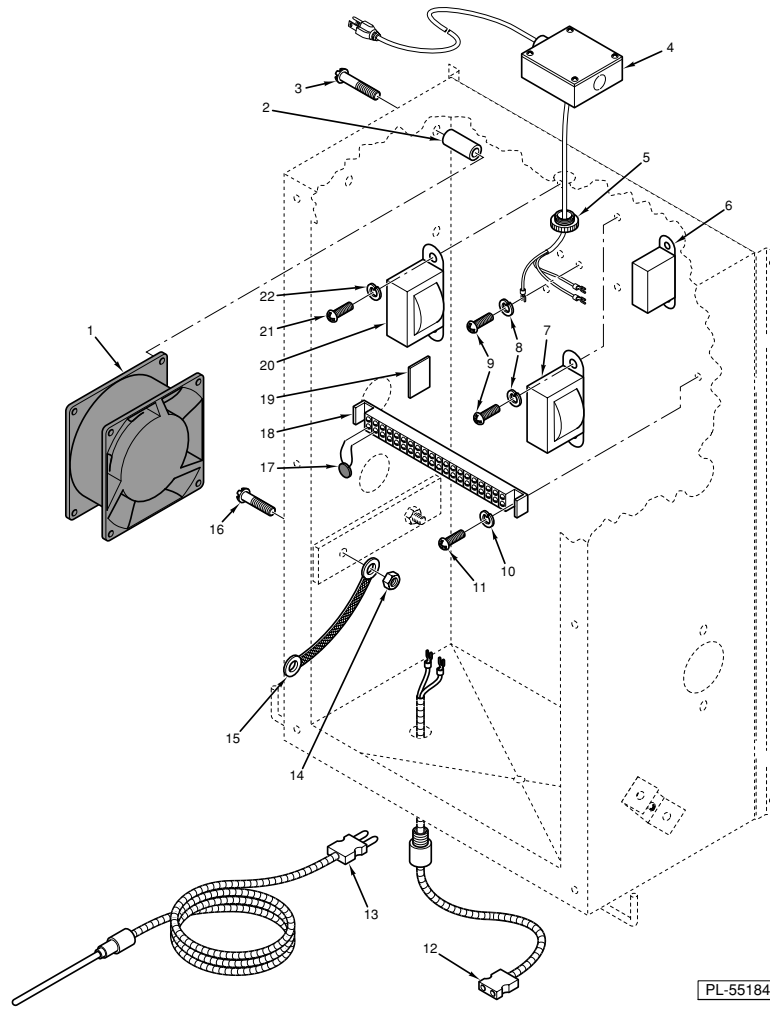
PL-55183

WATER METER PIPING AND COVER

**WATER METER PIPING AND COVER**

ILLUS. PL-55183	PART NO.	NAME OF PART	AMT.
1	***	Mach. Screw 10-32 x 1/2, Truss Head .....	6
2	01-10J410-00003	Cover - Water Meter Assy. ....	1
3	01-10J438-00001	External Plumbing .....	1
4	01-10J385-00001	Pressure Gauge Assy. ....	1
5	01-100V17-00330	Regulator - Pressure .....	1
6	01-10J407-00001	Box - Water Meter .....	1
7	01-10J318-00001	Bracket - Mounting .....	1
8	01-100V17-00333	Vacuum Breaker .....	1
9	01-100V17-00322	Elbow - 1/2 Street, Brass .....	1
10	01-100V17-00330	Regulator - Pressure .....	1
11	01-10J385-00001	Pressure Gauge Assy. ....	1
12	01-10J438-00001	External Plumbing .....	1
13	01-100V17-00352	Elbow - 3/4 Street, Brass .....	1
14	01-100V16-00155	Washer - Fiber .....	1
15	***	Mach. Screw 10-32 x 1/2, Truss Head .....	2
16	01-10J343-00001	Hose - Dispensing .....	1
17	***	Mach. Screw 10-32 x 1/2, Truss Head .....	1
18	01-10J351-00001	Clip - Mount .....	1
19	***	Nut 10-32 Hex Nylock .....	2
20	01-100V17-00338	Fitting - Barb Hose 1/2 x 5/8, Brass .....	1
21	01-100V17-00320	Hose - 5/8 Braided (Aprox. 8" Long) .....	1
22	01-10J423-00001	Solenoid Pipe Assy. ....	1
23	01-100V16-00155	Washer - Fiber .....	1
24	01-10J460-00001	Sensor - Flow Assy. ....	1
25	01-100V16-00155	Washer - Fiber .....	1
26	01-1000V1-00033	Clamp - Band .....	1
27	01-10J422-00001	Mixer Valve Pipe Assy. ....	1
28	01-10J405-00001	Insulator - Pipe .....	1
29	01-100V16-00155	Washer - Fiber .....	1
30	01-100V17-00352	Elbow - 3/4 Street, Brass .....	1
31	01-10J422-00101	Probe - Temperature .....	1

\*\*\* To Be Purchased Locally



**ELECTRICAL COMPONENTS**

ILLUS. PL-55184	PART NO.	NAME OF PART	AMT.
1	01-10J446-00001	Fan .....	1
2	01-1000V5-00160	Spacer - Nylon .....	3
3	***	Mach. Screw 10-32 x 3/4, Truss Head .....	3
4	01-10J595-00001	Box - Junction .....	1
5	01-100V11-00102	Nipple - Chase .....	1
6	01-10J395-00001	Relay Assy. ....	1
7	01-100V10-00110	Transformer - Primary .....	1
8	***	Lockwasher .....	4
9	***	Mach. Screw 6-32 x 1/2, Round Head .....	4
10	***	Lockwasher .....	1
11	***	Mach. Screw 6-32 x 1/2, Round Head .....	1
12	01-10J581-00001	Thermistor - Extension Cord .....	1
13	01-10J348-00001	Probe - Temperature .....	1
14	***	Nut 1/4-20 Hex Nylock .....	2
15	01-10J444-00001	Strap - Ground .....	1
16	***	Mach. Screw 1/4-20 x 1/2, Truss Head .....	2
17	01-100V23-00SU1	Supressor .....	1
18	01-1000V5-00112	Terminal Block .....	1
19	01-1000V5-00023	Pad - Mounting .....	2
20	01-100V10-00110	Transformer - Primary .....	1
21	***	Mach. Screw 6-32 x 1/2, Round Head .....	4
22	***	Lockwasher .....	4

\*\*\* To Be Purchased Locally