

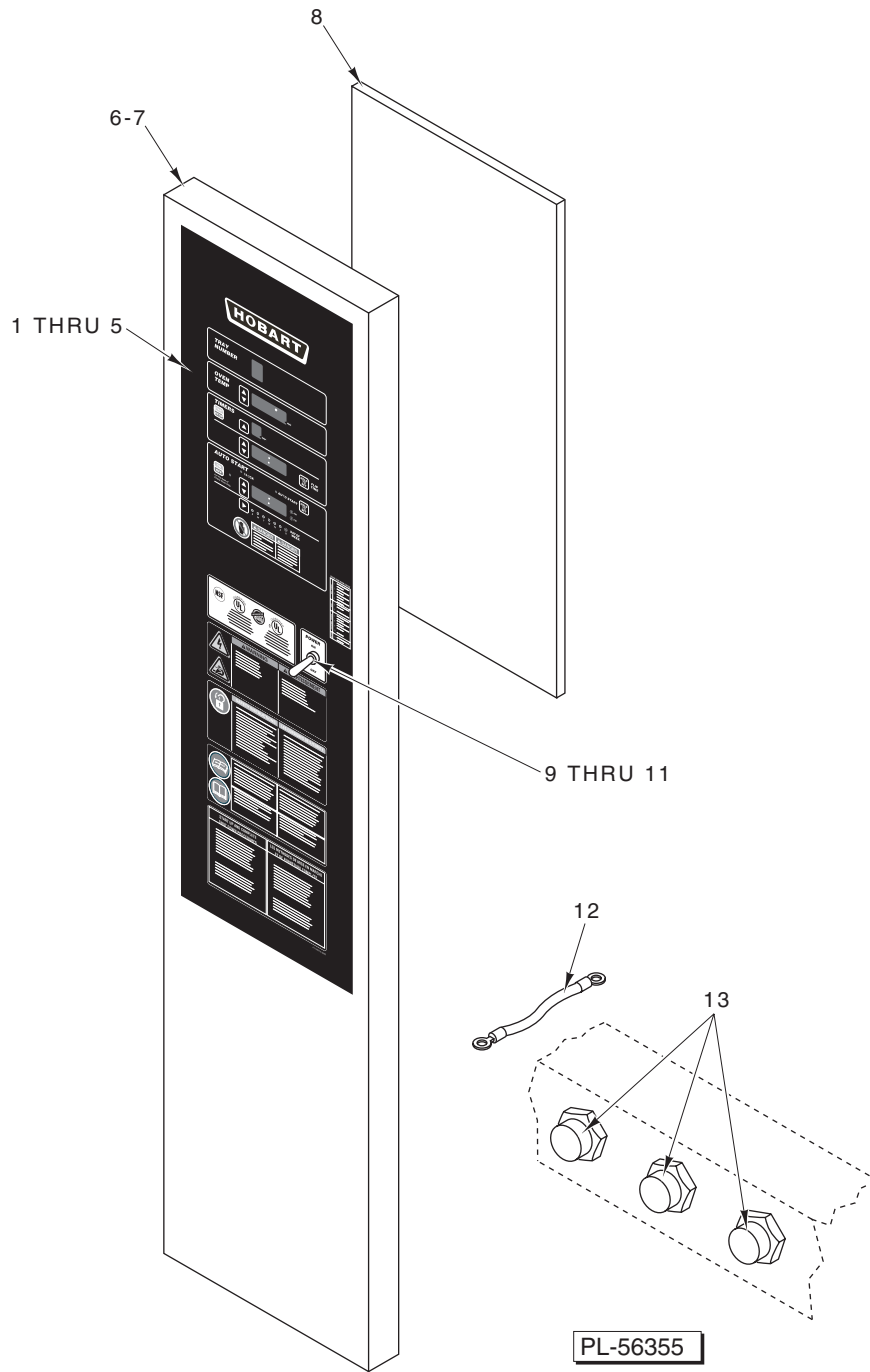


CATALOG OF REPLACEMENT PARTS



REVOLVING TRAY OVENS

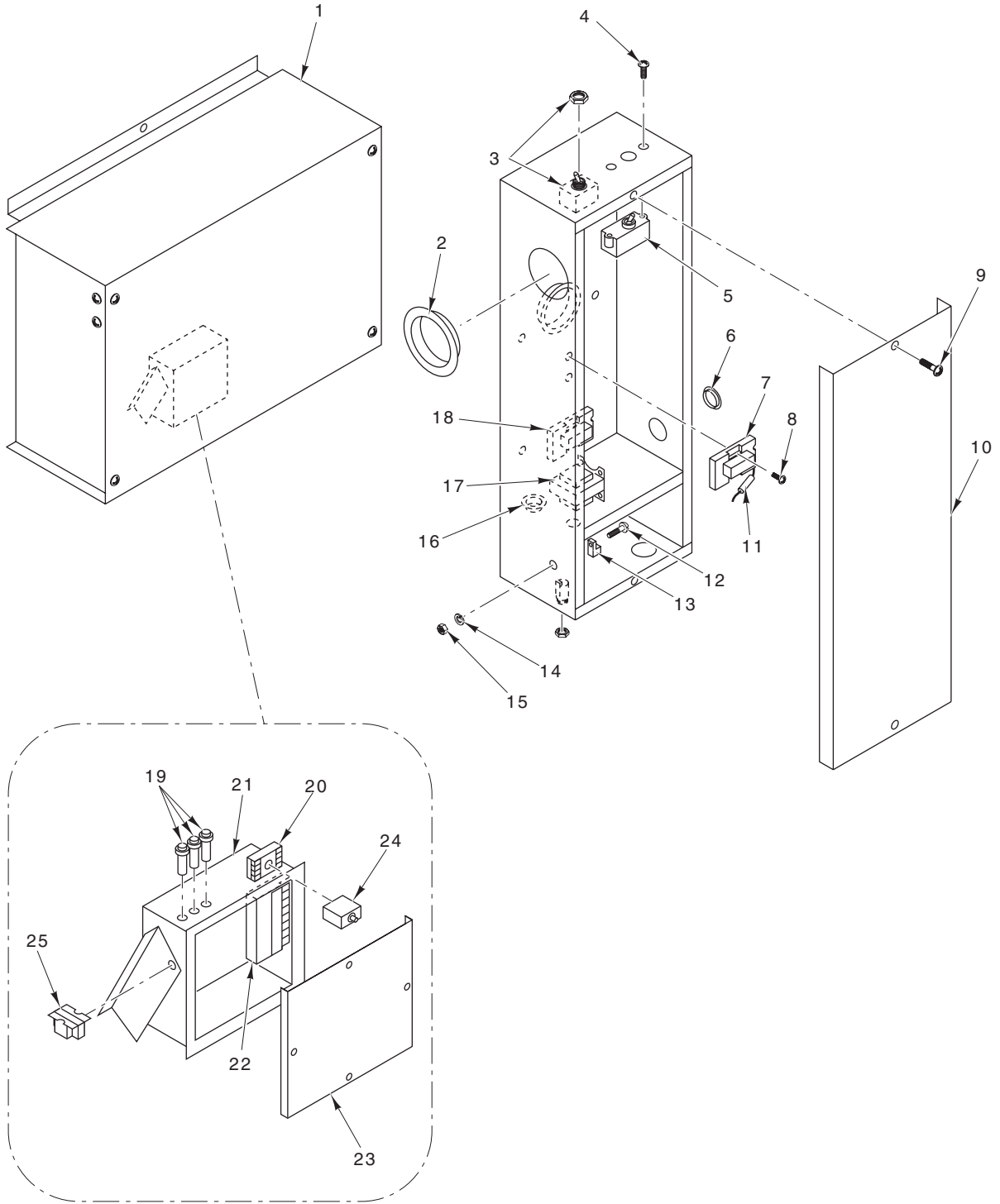
HO851G-36	ML-132258
HO851G-30	ML-132259
HO851G-24	ML-132260
HO851G-18	ML-132261



CONTROL PANEL

CONTROL PANEL

ILLUS.	PART NO.	NAME OF PART	AMT.
PL-56355			
1	01-100V16-0362C	Label – Control Panel (W/O Autostart)	1
2	01-100V16-0362D	Label – Control Panel (W/Autostart)	1
3	01-1M3109-00002	Board – PC (W/O Autostart)	1
4	01-1M3109-00003	Board – PC (W/Autostart)	1
5	01-1M3001-00002	Spacer – PC Board	12
6	01-1M3074-00003	Door Weldment (W/O Autostart)	1
7	01-1M3074-00002	Door Weldment (W/Autostart)	1
8	01-1M3083-00001	Cover – PC Control Board	1
9	01-1000V4-00019	Boot – Toggle Switch Seal	1
10	01-1M2283-00001	Guard – Toggle Switch	1
11	01-1000V6-0035J	Switch – Toggle	1
12	01-1M2777-00001	Strap – Ground	1
13	01-1000V6-00048	Button – Push (Green)	3
	01-1M3103-00002	Door – Control (W/Autostart) (Incls. Items 2, 4, 5, & 7 thru 12)	1
	01-1M3103-00001	Door – Control (W/O Autostart) (Incls. Items 1, 3, 5, 6, & 8 thru 12)	1

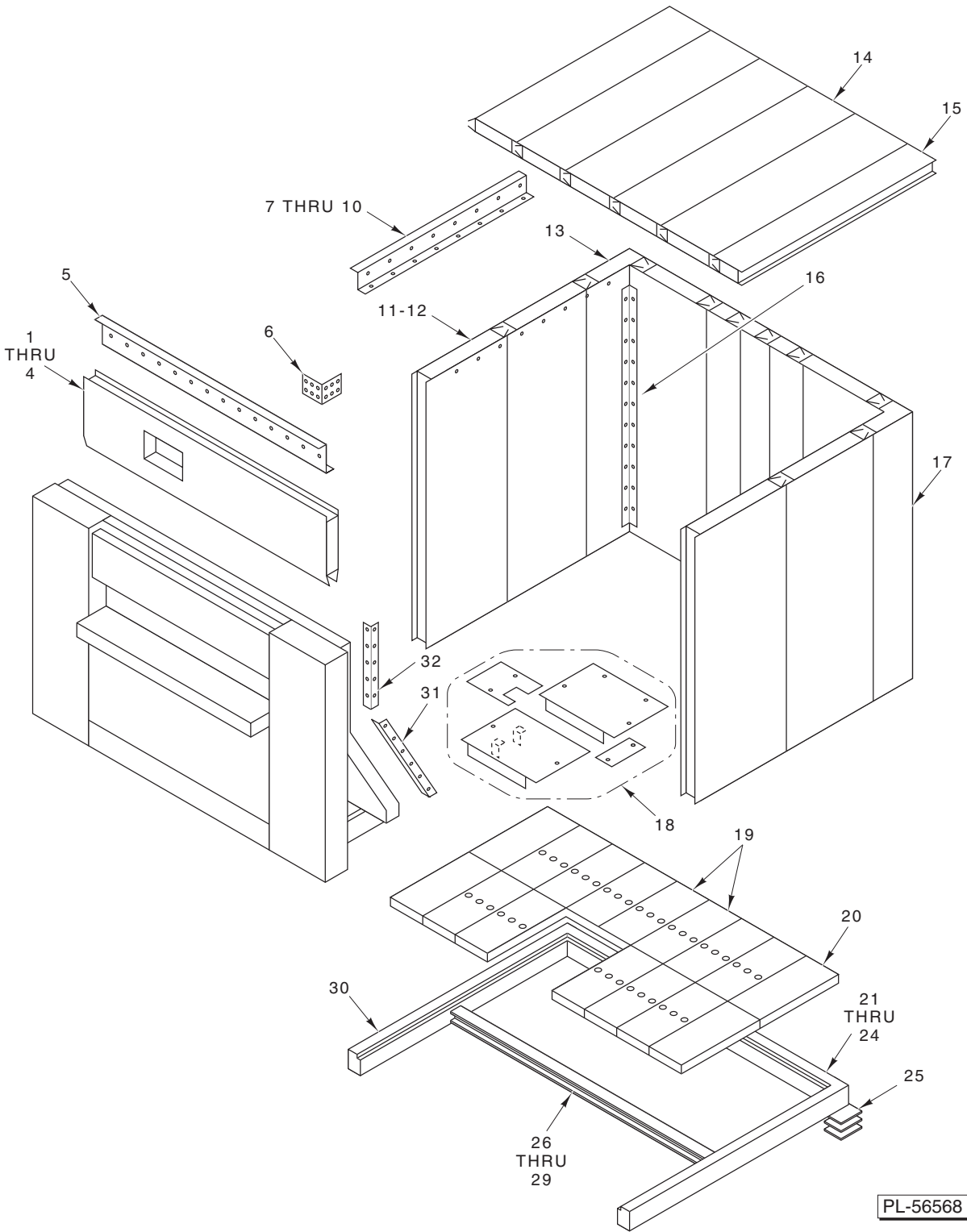


PL-56566

CONTROL MODULE AND SERVICE ENTRANCE

CONTROL MODULE AND SERVICE ENTRANCE

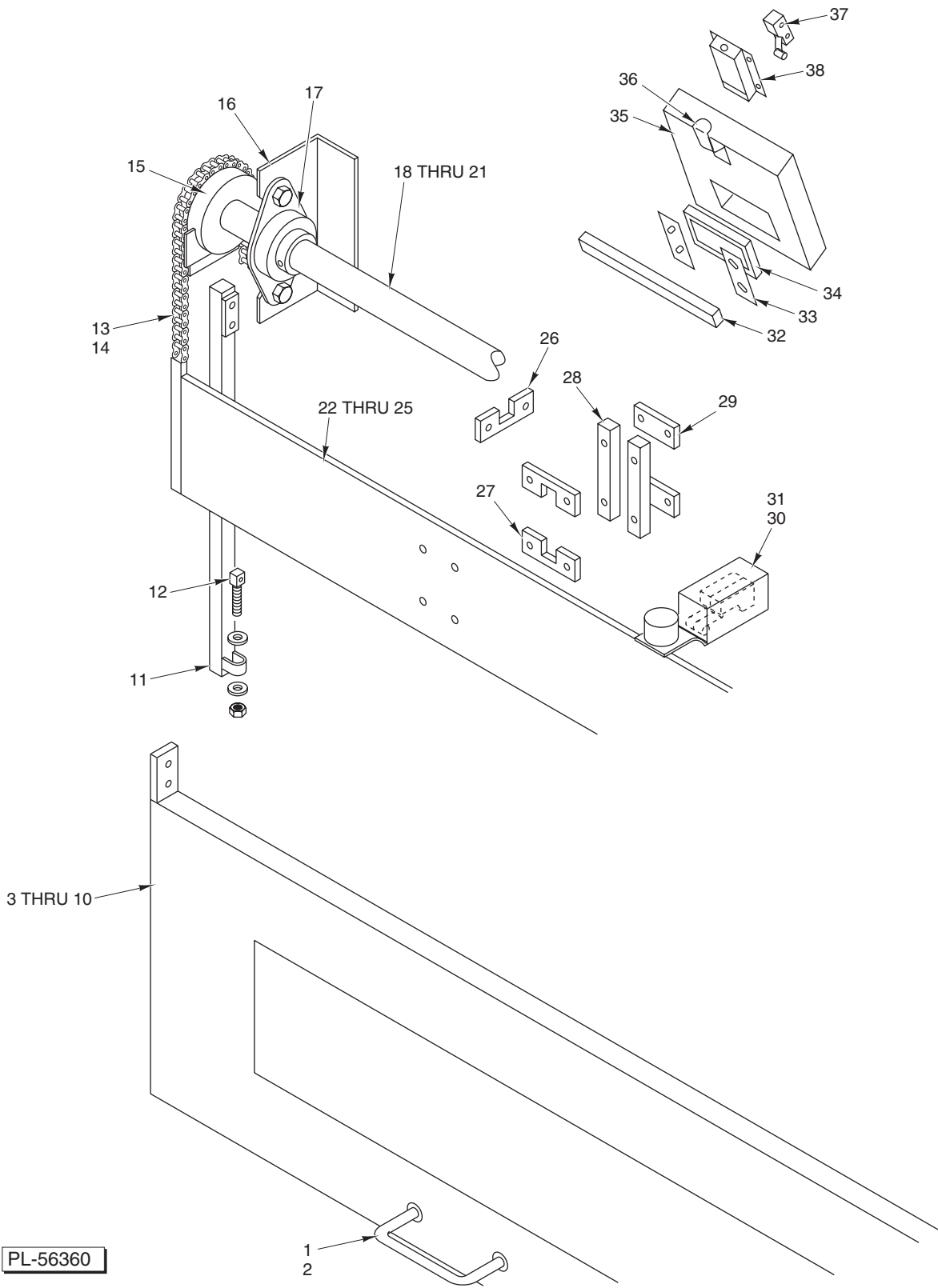
ILLUS.	PART NO.	NAME OF PART	AMT.
PL-56566			
1	01-10M800-00001	Board – Oven Control Circuit	1
2	01-1000V5-00033	Bushing – Snap (2 In.)	2
3	01-1000V6-00045	Switch – Toggle 3PDT	1
4	-	Mach. Screw 6-32 x 1/4 Pan Hd.	2
5	01-1000V6-00052	Breaker – Circuit (3 Amp.)	1
6	01-100V15-00044	Cap – Finish (1 In.)	1
7	01-1000V6-00004	Relay DPDT (W/Auxillary Spot Connector)	2
8	-	Mach. Screw 10-32 x 1/4 Pan Hd.	4
9	01-10M789-00001	Junction Box Assy.	1
10	01-10M793-00001	Cover – Service	1
11	01-100V23-00R36	Resistor (25 Ohms)	1
12	-	Mach. Screw 1/4-20 x 1/2 Pan Hd.	1
13	01-1000V5-00037	Terminal Lug	1
14	-	Lockwasher 1/4 Internal Star	1
15	-	Nut 1/4-20 Hex	1
16	01-1000V5-00059	Bushing – Snap	1
17	01-100V10-00061	Transformer (120 V., 50/60 Hz.)	1
18	01-100V23-000D1	Diode (6 Amp.)	1
19	01-1000V7-00008	Light – Red (120 V.)	1
20	01-1000V6-00021	Socket – Relay	1
21	01-1M1633-00001	Box – Gas Control	1
22	01-1A1715-00001	Kit – Ignition Control	1
23	01-1M1631-00001	Cover – Gas Control Box	1
24	01-1M3967-00001	Relay – Time Delay	1
25	01-100V10-00061	Transformer (50/60 Hz., 120 V.)	1
	01-10M789-00001	Box – Service Entrance	1



CABINET ASSEMBLY

CABINET ASSEMBLY

ILLUS. PL-56566	PART NO.	NAME OF PART	AMT.
1	01-1M1211-00001	Panel – Plain Upper Front (84 ³ / ₄ In.) (ML-132261)	1
2	01-1M1211-00002	Panel – Plain Upper Front (102 ³ / ₄ In.) (ML-132260)	1
3	01-1M1211-00003	Panel – Plain Upper Front (120 ³ / ₄ In.) (ML-132259)	1
4	01-1M1211-00004	Panel – Plain Upper Front (138 ³ / ₄ In.) (ML-132258)	1
5	01-10M932-00001	Bracket – Top Wall Corner	4
6	01-10M831-00007	Hanger – Ceiling (Front & Rear)	2
7	01-10M831-00001	Hanger – Ceiling (Sides) (ML-132261)	2
8	01-10M831-00002	Hanger – Ceiling (Sides) (ML-132260)	2
9	01-10M831-00003	Hanger – Ceiling (Sides) (ML-132259)	2
10	01-10M831-00004	Hanger – Ceiling (Sides) (ML-132258)	2
11	01-10M820-0018C	Panel – Wall Cres. (18 x 83 ¹ / ₂)	AR
12	01-10M820-0042C	Panel – Wall Cres. (42 x 83 ¹ / ₂)	AR
13	01-10M822-00001	Corner – Wall (LH Rear)	1
14	01-10M820-00018	Panel – Ceiling	AR
15	01-10M820-00010	Panel – Ceiling	1
16	01-10M913-00009	Angle – Interior Trim (Inside Rear Corner)	2
17	01-10M822-00001	Corner – Wall (RH Rear)	1
18	01-1M1024-00001	Floor – Filler Package	1
19	01-10M867-00002	Floor – Section W/Holes	AR
20	01-10M867-00001	Floor – Section Plain	4
21	01-10M817-00001	Base – Rear (ML-132261)	1
22	01-10M817-00002	Base – Rear (ML-132260)	1
23	01-10M817-00003	Base – Rear (ML-132259)	1
24	01-10M817-00004	Base – Rear (ML-132258)	1
25	01-10M126-00001	Base Shim – Leveling	AR
26	01-10M832-00001	Beam – Floor (ML-132261)	1
27	01-10M832-00002	Beam – Floor (ML-132260)	1
28	01-10M832-00003	Beam – Floor (ML-132259)	1
29	01-10M832-00004	Beam – Floor (ML-132258)	1
30	01-10M817-00001	Base – Side Assy.	2
31	01-10M913-00007	Angle – Interior Trim (Inside Rear Corner)	2
32	01-10M913-00008	Angle – Interior Trim (Inside Rear Corner)	2

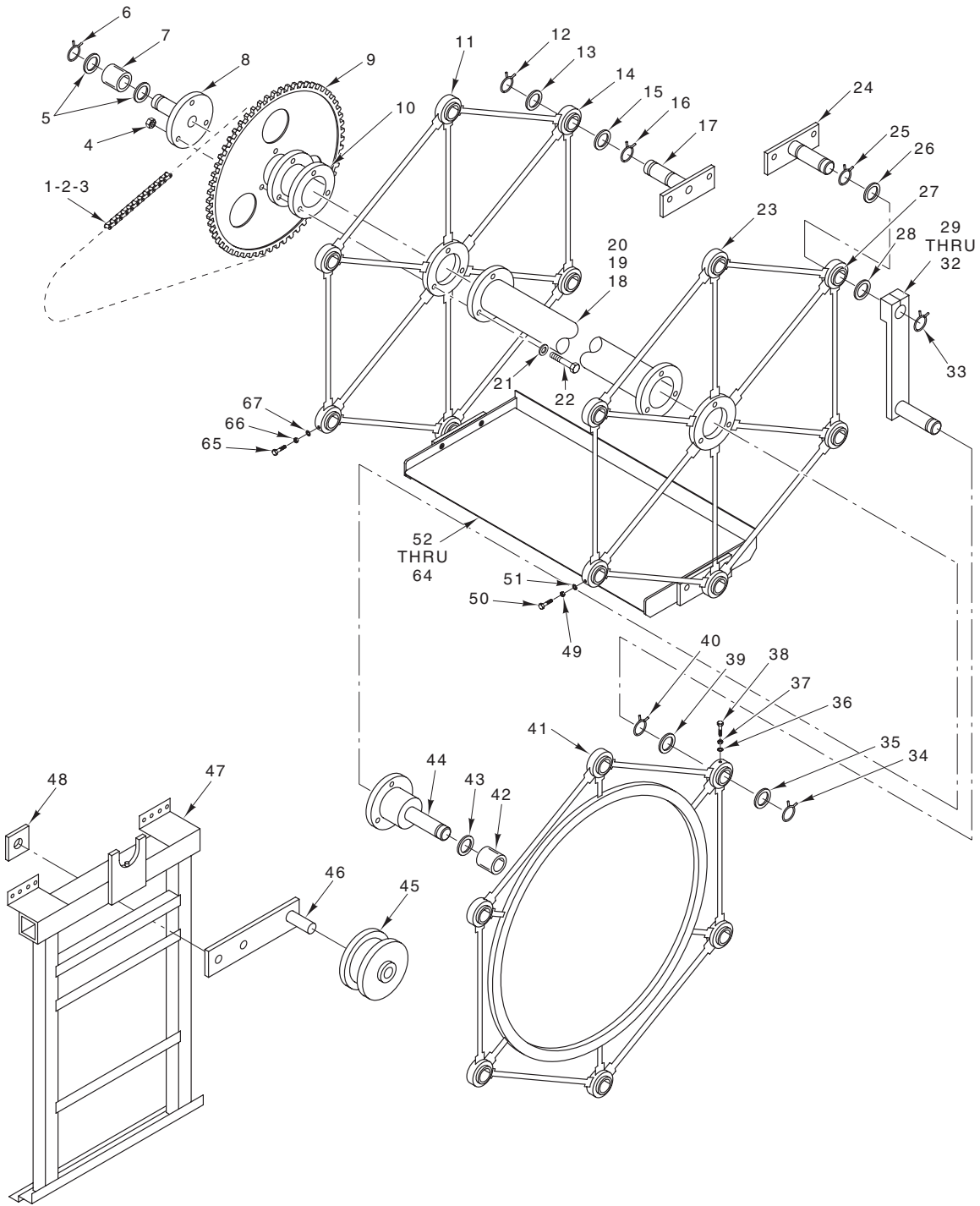


LOADING AND SERVICE DOOR

LOADING AND SERVICE DOOR

ILLUS.	PART NO.	NAME OF PART	AMT.
PL-56360			
1	01-1M2871-00001	Handle – Door	1
2	01-1M2872-00001	Plate – Backer (Door Handle)	1
3	01-1M2868-00001	Door – Loading W/Window (ML-132261)	1
4	01-1M2868-00002	Door – Loading W/Window (ML-132260)	1
5	01-1M2868-00003	Door – Loading W/Window (ML-132259)	1
6	01-1M2868-00004	Door – Loading W/Window (ML-132258)	1
7	01-1M2868-00005	Door – Loading W/O Window (ML-132261)	1
8	01-1M2868-00006	Door – Loading W/O Window (ML-132260)	1
9	01-1M2868-00007	Door – Loading W/O Window (ML-132259)	1
10	01-1M2868-00008	Door – Loading W/O Window (ML-132258)	1
11	01-10M440-00001	Post – Door Guide	2
12	01-100M27-00001	Anchor – Chain	2
13	01-1000V3-00051	Chain – #40 (47 Pitches)	2
14	01-1000V3-00008	Link – Connector (#40)	2
15	01-1000V3-00043	Sprocket – #40B 1 In. Bore (21 teeth)	2
16	01-100M41-00001	Bracket	2
17	01-1000V0-00008	Bearing – Ball	2
18	01-10M758-00001	Shaft – Counterweight (58 ¹ / ₂ In.) (ML-132261)	1
19	01-10M758-00002	Shaft – Counterweight (76 ¹ / ₂ In.) (ML-132260)	1
20	01-10M758-00003	Shaft – Counterweight (94 ¹ / ₂ In.) (ML-132259)	1
21	01-10M758-00004	Shaft – Counterweight (112 ¹ / ₂ In.) (ML-132258)	1
22	01-10M764-00010	Counterweight Assy. (57 ¹ / ₄ In.) (ML-132261)	1
23	01-10M764-00011	Counterweight Assy. (75 ¹ / ₄ In.) (ML-132260)	1
24	01-10M764-00012	Counterweight Assy. (93 ¹ / ₄ In.) (ML-132259)	1
25	01-10M764-00013	Counterweight Assy. (111 ¹ / ₄ In.) (ML-132258)	1
26	01-1M1251-00001	Bumper – Shaft Counterweight	1
27	01-100M40-00001	Guide – Door Weight	2
28	01-100M40-00003	Guide – Door Weight	2
29	01-100M40-00002	Guide – Door Weight	2
30	01-1M1015-00001	Box – Door Interlock Assy.	1
31	01-1000V6-00065	Switch – Lever Actuated	2
32	01-10M929-00001	Bar – Door Retention	1
33	01-100M97-00002	Retainer – Window	2
34	01-1M1419-00001	Window – View	1
35	01-10M774-00001	Door – Access (20 Degree Panel)	1
36	01-1M1002-00001	Actuator – Door Interlock	1
37	01-1000V6-00065	Switch – Lever Actuated	2
38	01-1M1003-00001	Bracket – Service Door Interlock	1
	01-10M331-00001	Stop – Counterweight	1

HO851G REVOLVING TRAY OVENS REPLACEMENT PARTS



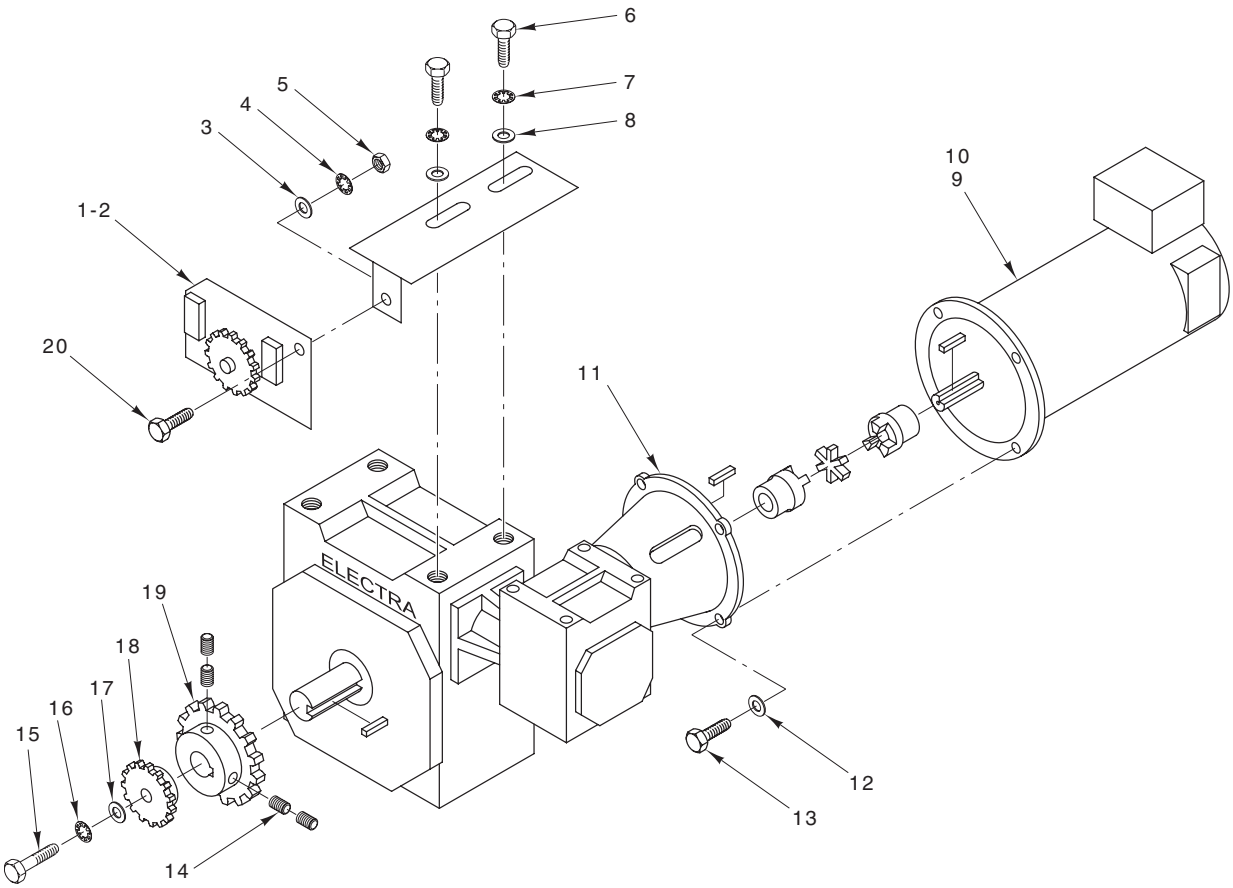
PL-56348

MAIN DRIVE ASSEMBLY

ILLUS.	PART NO.	NAME OF PART	AMT.
PL-56348			
1	01-10M753-0001C	Chain – Main Drive	1
2	01-1000V3-00096	Link – Master	1
3	01-1000V3-00095	Link Roller	1
4	01-1000V4-00007	Lock Nut 1/2 (Vibresist)	1
5	01-1000V0-00019	Washer – Thrust	2
6	01-1000V1-00011	Snap Ring 1 ¹⁵ / ₁₆	1
7	01-1M1112-00001	Bearing – Main Assy.	1
8	01-10M540-00001	Carrier – Journal End Assy.	1

MAIN DRIVE ASSEMBLY

ILLUS. PL-56348	PART NO.	NAME OF PART	AMT.
9	01-100M61-00096	Sprocket - #60 (96 Tooth)	1
10	01-10M815-00005	Shaft – Main Assy. (3 ¹ / ₄ In.)	1
11	01-10M823-00006	Wheel – Carrier	1
12	01-1000V1-00004	Snap Ring 1 ¹⁵ / ₁₆	AR
13	01-1000V0-00018	Thrust Washer	AR
14	01-1M3683-00002	Bearing Assy.	AR
15	01-1000V0-00018	Thrust Washer	AR
16	01-1000V1-00004	Snap Ring 1 ¹ / ₂	AR
17	01-10M562-00001	Support – Tray	AR
18	01-10M815-00001	Shaft (62 ¹ / ₂ In.)	1
19	01-10M557-00002	Shaft (80 ¹ / ₂ In.)	1
20	01-10M815-00003	Shaft (98 ¹ / ₂ In.)	1
21	01-1000V4-00008	Washer 1 ¹ / ₂	1
22	01-1000V4-00028	Bolt – Shear 1 ¹ / ₂ x 2 ¹ / ₄ Hex Hd.	1
23	01-10M823-00006	Wheel – Carrier	1
24	01-10M562-00002	Support – Tray	AR
25	01-1000V1-00004	Snap Ring 1 ¹ / ₂	AR
26	01-1000V0-00018	Thrust Washer	AR
27	01-1M3683-00002	Bearing Assy.	AR
28	01-1000V0-00018	Thrust Washer	AR
29	01-10M563-00001	Leveler – Arm Assy.	AR
30	01-1000V4-00265	Bolt 1 ¹ / ₂ -13 x 2 Hex Hd.	AR
31	01-1000V4-00264	Lockwasher 1 ¹ / ₂ Internal Tooth	AR
32	01-1000V4-00266	Nut 1 ¹ / ₂ -13 Hex	AR
33	01-1000V1-00004	Snap Ring 1 ¹ / ₂	AR
34	01-1000V1-00004	Snap Ring 1 ¹ / ₂	AR
35	01-1000V0-00018	Thrust Washer	AR
36	01-1000V4-00264	Lockwasher 1 ¹ / ₂ Internal Tooth	AR
37	01-1000V4-00266	Nut 1 ¹ / ₂ -13 Hex	AR
38	01-1000V4-00267	Bolt 1 ¹ / ₂ -13 x 1 Hex Hd.	AR
39	01-1000V0-00018	Thrust Washer	AR
40	01-1000V1-00004	Snap Ring 1 ¹ / ₂	AR
41	01-10M824-00006	Wheel Leveler	1
42	01-1M1112-00001	Bearing – Main Assy.	1
43	01-1000V0-00019	Washer – Thrust	1
44	01-10M539-00001	Leveler – Journal End Assy.	1
45	01-10M556-00001	Wheel – Guide Assy.	2
46	01-10M554-00004	Guide – Wheel Mount Assy.	2
47	01-10M816-00001	Stand – Main	2
48	01-10M278-00001	Pad – Oven Guide Roll Arm	4
49	01-1000V4-00266	Nut 1 ¹ / ₂ -13 Hex	AR
50	01-1000V4-00267	Bolt 1 ¹ / ₂ -13 x 1 Hex Hd.	AR
51	01-1000V4-00264	Lockwasher 1 ¹ / ₂ Internal Tooth	AR
52	01-1M2753-00058	Tray – Perforated (58 x 26) (ML-132261)	AR
53	01-1M2753-00076	Tray – Perforated (76 x 26) (ML-132260)	AR
54	01-1M2753-00094	Tray – Perforated (94 x 26) (ML-132259)	AR
55	01-1M2753-00112	Tray – Perforated (112 x 26) (ML-132258)	AR
56	01-1M2754-00058	Tray – Solid (58 x 26) (ML-132261)	AR
57	01-1M2754-00076	Tray – Solid (76 x 26) (ML-132260)	AR
58	01-1M2754-00094	Tray – Solid (94 x 26) (ML-132259)	AR
59	01-1M2754-00112	Tray – Solid (112 x 26) (ML-132258)	AR
60	01-100V21-094-1	Liner – Tray Cement Fiber (1 ¹ / ₂ x 25 ³ / ₄ x 18)	AR
61	01-100V21-094-2	Liner – Tray Cement Fiber (1 ¹ / ₂ x 25 ³ / ₄ x 28 ⁵ / ₈)	AR
62	01-100V21-094-3	Liner – Tray Cement Fiber (1 ¹ / ₂ x 25 ³ / ₄ x 36)	AR
63	01-1M2747-00001	Retainer – Tray Liner	AR
64	01-1M2764-00001	Angle – Tray Ends	AR
65	01-1000V4-00267	Bolt 1 ¹ / ₂ -13 x 1 Hex Hd.	AR
66	01-1000V4-00266	Nut 1 ¹ / ₂ -13 Hex	AR
67	01-1000V4-00264	Lockwasher 1 ¹ / ₂ Internal Tooth	AR
	01-10M813-00006	Carrier Wheel Assy. (Incls. Items 11 thru 20, 65, 66, & 67)	1
	01-10M814-00006	Leveler Wheel Assy. (Incls. Items 23 thru 49, 50, & 51)	1

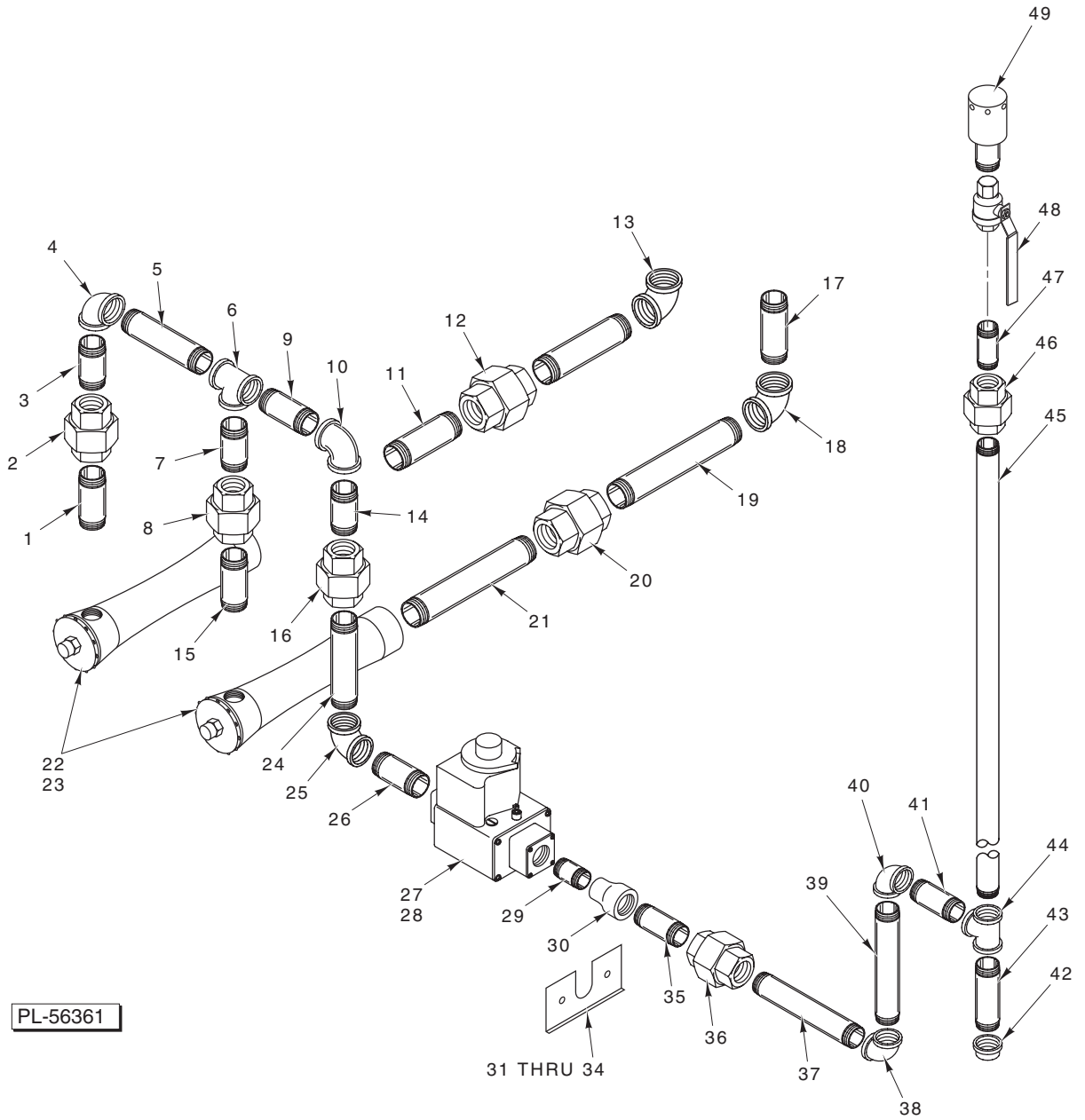


PL-56577

MAIN DRIVE MOTOR ASSEMBLY

MAIN DRIVE MOTOR ASSEMBLY

ILLUS. PL-56577	PART NO.	NAME OF PART	AMT.
1	01-1M3005-00001	Pointer Assy. (Incls. Item 2)	1
2	01-1000V6-00192	Switch – Micro	2
3	-	Washer $\frac{3}{8}$	1
4	-	Lockwasher $\frac{3}{8}$	1
5	-	Nut $\frac{3}{8}$ -16 Hex	1
6	-	Mach. Screw $\frac{3}{8}$ -16 x $\frac{3}{4}$ Hex Hd.	2
7	-	Lockwasher $\frac{3}{8}$	2
8	-	Washer $\frac{3}{8}$	2
9	01-10M512-00001	Motor Assy	1
10	01-1000V8-00064	Brush – Motor	3
11	01-1000V2-00025	Gearbox (300:1)	1
12	-	Lockwasher $\frac{3}{8}$	4
13	-	Mach. Screw $\frac{3}{8}$ -16 x 1 Hex Hd.	4
14	-	Set Screw $\frac{5}{16}$ -18 x $\frac{1}{2}$	4
15	-	Mach. Screw $\frac{3}{8}$ -16 x 1 Hex Hd.	1
16	-	Lockwasher $\frac{3}{8}$	1
17	-	Washer $\frac{3}{8}$	1
18	01-1000V2-00022	Gear – Spur (48T)	1
19	01-1000V3-00044	Gear – Spur (16T)	1
20	-	Mach. Screw $\frac{3}{8}$ -16 x $\frac{3}{4}$ Hex Hd.	1
	01-1M1254-00001	Kit – Hand Crank	1

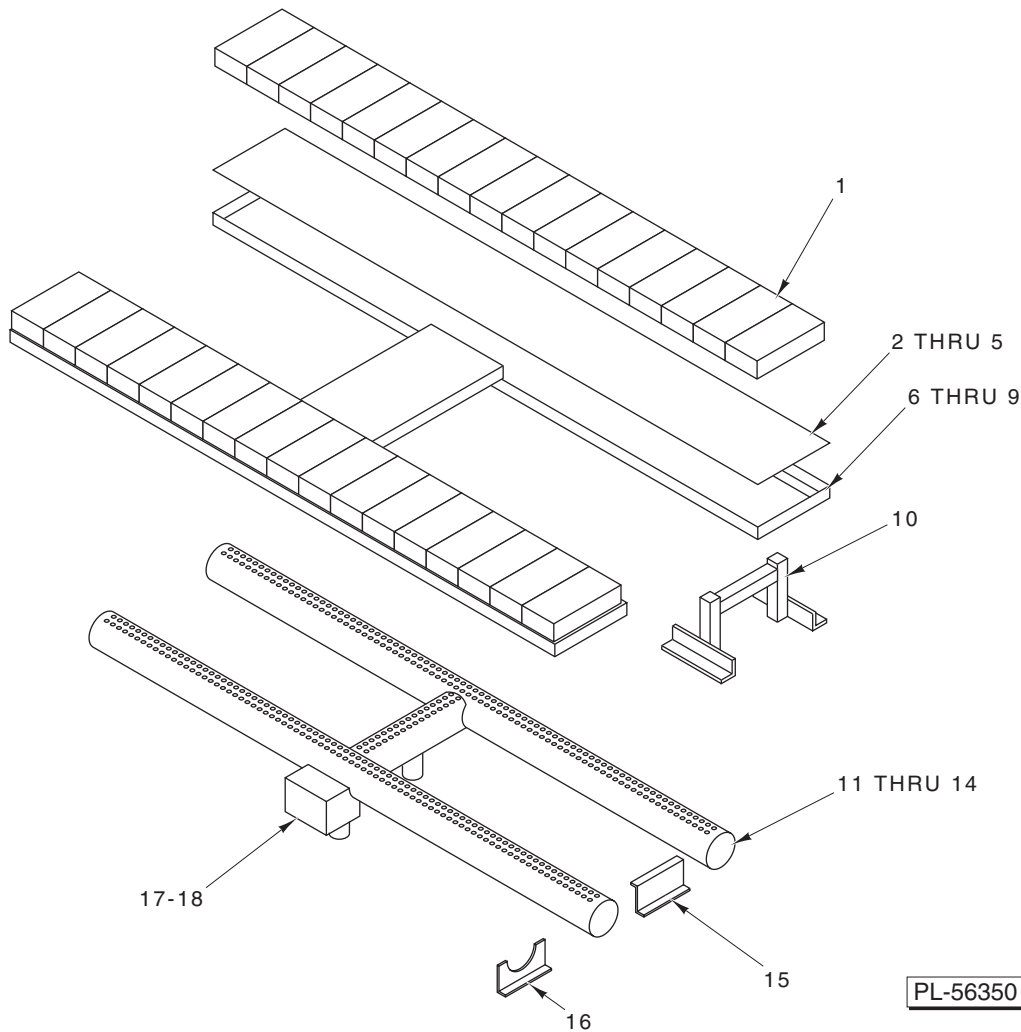


GAS SUPPLY ASSEMBLY

01-1M1753-00001 Oil – Gear (Synthetic) 1

GAS SUPPLY ASSEMBLY

ILLUS. PL-56361	PART NO.	NAME OF PART	AMT.
1	01-100V17-00115	Pipe 1 x 2	1
2	01-100V17-00117	Union 1 In.	1
3	01-100V17-00115	Pipe 1 x 2	1
4	01-100V17-00119	Elbow – Reducing 1 x 1/4	1
5	01-100V17-00121	Pipe 1 1/4 x 6	1
6	01-100V17-00122	Tee – Reducing 1 1/4 x 1 1/4	1
7	01-100V17-00115	Pipe 1 x 2	1
8	01-100V17-00117	Union 1 In.	1
9	01-100V17-00120	Pipe 1 1/4 x 3	1
10	01-100V17-00119	Elbow – Reducing 1 x 1/4	1
11	01-100V17-00123	Pipe – 2 1/2 x 8	1
12	01-100V17-00063	Union 2 1/2	1
13	01-100V17-00123	Pipe – 2 1/2 x 8	1
14	01-100V17-00115	Pipe 1 x 2	1
15	01-100V17-00115	Pipe 1 x 2	1
16	01-100V17-00117	Union 1 In.	1
17	01-100V17-00324	Pipe 2 1/2 Dia. x 3	1
18	01-100V17-00103	Ell 2 1/2 x 45 Deg.	1
19	01-100V17-00123	Pipe – 2 1/2 x 8	1
20	01-100V17-00063	Union 2 1/2	1
21	01-000V17-00123	Pipe – 2 1/2 x 8	1
22	01-1000V9-00050	Mixer – Gas 2 1/2 In. Dia. (Natural Gas)	1
23	01-1000V9-00080	Mixer – Compound (L.P. Gas)	1
24	01-1A1167-00450	Pipe NPT 4 1/2 In.	1
25	01-100V17-00118	Ell – Reducing 90 Deg. 1 x 3/4	1
26	01-100V17-00113	Pipe 3/4 x 3	1
27	01-1000V9-00121	Valve – Gas 1/2 x 3/4	1
28	01-1000V9-00128	Kit – L.P. Conversion	1
29	-	Pipe – Close 1/2 Dia.	1
30	-	Reducer – Bell 3/4 x 1/2	1
31	01-1M1014-00001	Support – Gas Assy.	1
32	-	Bolt 1/4-20 Hex Hd.	2
33	-	Washer 1/4	2
34	-	Nut 1/4-20 Hex	2
35	01-1M1093-00003	Pipe – Mixer Gas Supply Assy.	2
36	01-100V17-00114	Union 3/4	1
37	-	Pipe	1
38	01-100V17-00118	Ell – Reducing 90 Deg. 1 x 3/4	1
39	01-1A1167-01300	Pipe NPT 13 In.	1
40	-	Elbow	1
41	01-1A1167-00300	Pipe NPT 3 In.	1
42	-	Cap – Pipe 1 In.	1
43	01-1A1167-00500	Pipe NPT 5 In.	1
44	-	Tee – Pipe	1
45	01-1A1167-02900	Pipe NPT 29 In.	1
46	01-100V17-00117	Union 1 In.	1
47	01-1A1167-00300	Pipe NPT 3 In.	1
48	01-100V17-00399	Valve – Butterfly 1 In. (Brass)	1
49	01-1M3052-00001	Inlet – Gas Supply	1



BURNER ASSEMBLY

ILLUS.	PART NO.	NAME OF PART	AMT.
	PL-56350		
1	01-100V21-00003	Firebrick 4 1/2 x 9 x 2 1/2	AR
2	01-10M862-00001	Liner – Brick (ML-132261)	2
3	01-10M862-00002	Liner – Brick (ML-132260)	2
4	01-10M862-00003	Liner – Brick (ML-132259)	2
5	01-10M862-00004	Liner – Brick (ML-132258)	2
6	01-10M860-00001	Rack – Brick (59 In.) (ML-132261)	2
7	01-10M860-00002	Rack – Brick (77 In.) (ML-132260)	2
8	01-10M860-00003	Rack – Brick (95 In.) (ML-132259)	2
9	01-10M860-00004	Rack – Brick (113 In.) (ML-132258)	2
10	01-10M581-00001	Stand – Brick Rack	1
11	01-10M990-00001	Burner – 2 Inlets (58 In.) (ML-132261)	1
12	01-10M990-00002	Burner – 2 Inlets (76 In.) (ML-132260)	1
13	01-10M990-00003	Burner – 2 Inlets (94 In.) (ML-132259)	1
14	01-10M990-00004	Burner – 2 Inlets (112 In.) (ML-132258)	1
15	01-10M678-00002	Support – Rear Burner	2
16	01-10M678-00001	Support – Forward Burner	2
17	01-1M1131-00002	Kit – Pilot Replacement (L.P. Gas)	1
18	01-1M1131-00001	Kit – Pilot Replacement (Natural Gas)	1