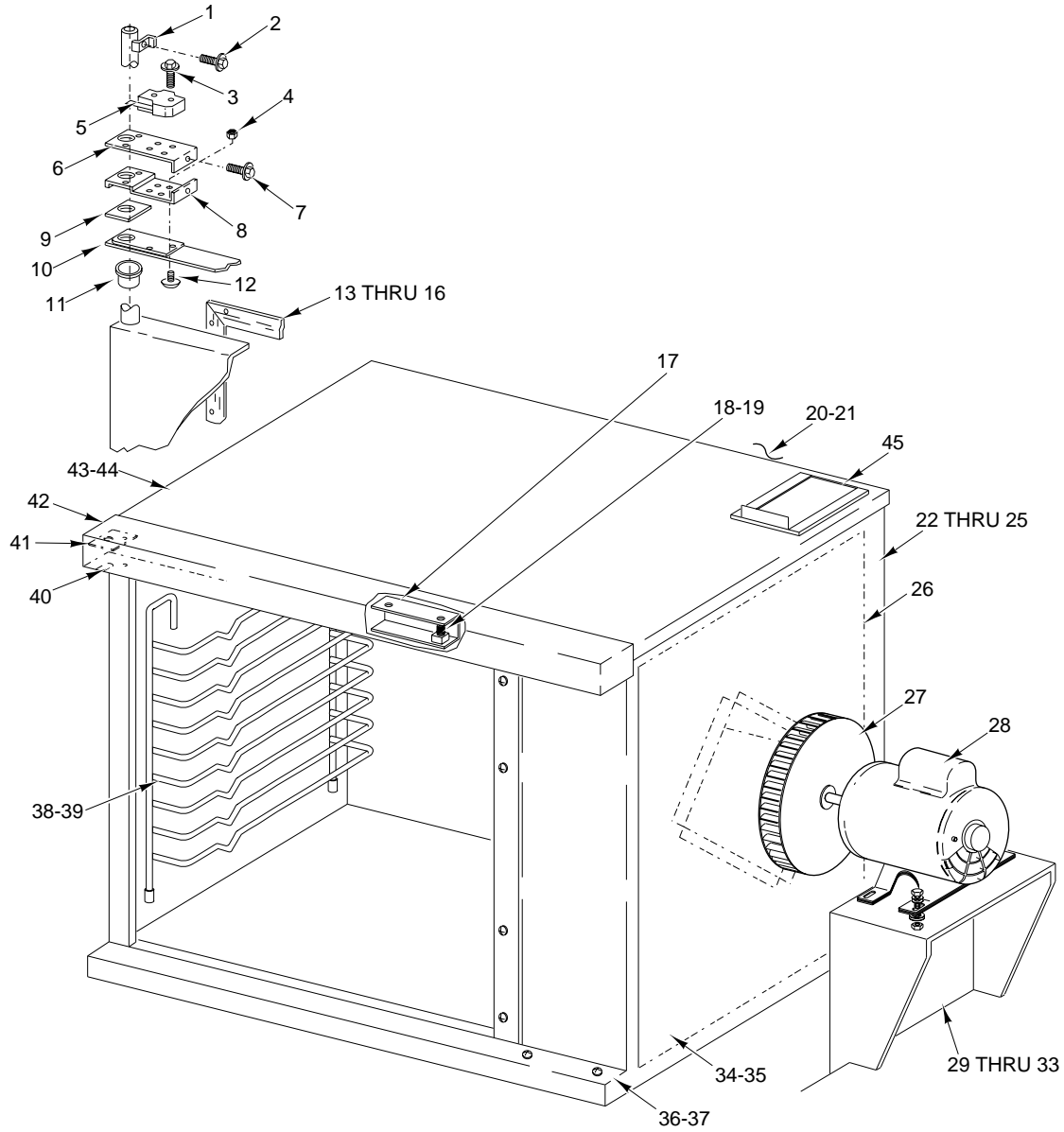




CATALOG OF REPLACEMENT PARTS

HALF SIZE ELECTRIC CONVECTION OVENS

ML-114574 HEC20
ML-114576 HEC20D

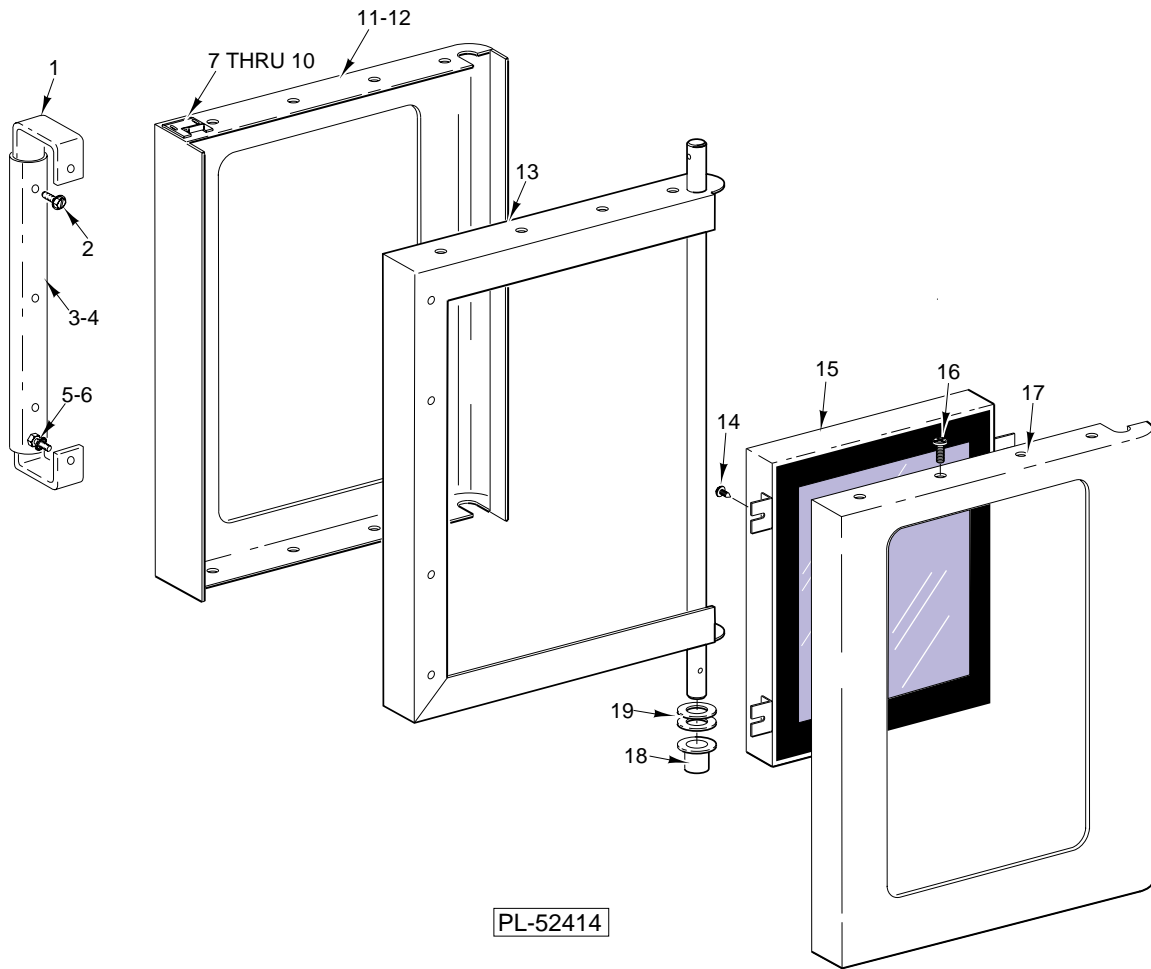


PL-52387

CABINET

CABINET

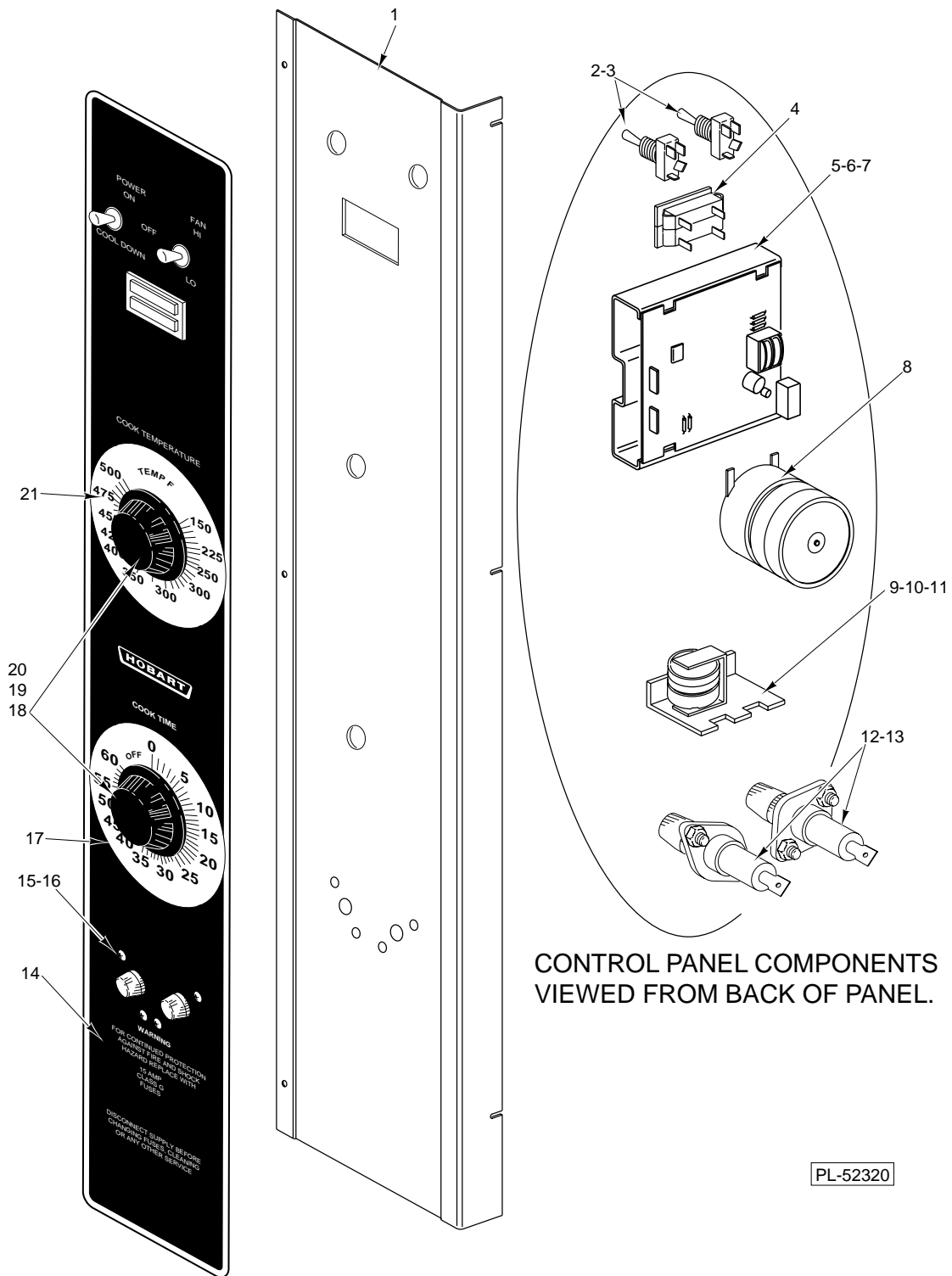
ILLUS. PL-52387	PART NO.	NAME OF PART	AMT.
1	00-422938-00001	Striker-Door Switch	1
2	SD-034-52	Self-Tapping Screw 8-32 x 1 Hex Washer Hd., Type T	1
3	SD-034-47	Self-Tapping Screw 6-32 x 1 Hex Washer Hd., Type T	2
4	NS-046-52	Nut - 1/4-20 Hex "Keps"	2
5	00-353782-00001	Switch-Door	1
6	00-353780-00001	Bracket-Switch	1
7	SD-036-30	Self-Tapping 8-32 x 1/4 Slotted Hex Washer Hd., Type T	1
8	00-353778-00001	Support-Switch	1
9	00-353482-00001	Spacer	1
10	00-353483-00002	Plate-Door (3 Holes)	1
11	00-347080-00002	Bearing - Door Shaft	1
12	SC-022-40	Mach. Screw 1/4-20 x 3/4 Phil. Flat Hd.	2
13	00-423282-00001	Seal-Door (Hinge Side)	1
14	00-423281-00001	Seal-Door (Latch Side)	1
15	00-423280-00001	Seal-Door (Top & Bottom)	2
16	SD-034-05	Self-Tapping Screw 6-20 x 3/8 Phil. Pan Hd., Type AB	16
17	00-355344	Channel - Latch	1
18	00-417810-00003	Spring - Compression	1
19	00-411794-00001	Catch - Door	1
20	00-354476-00001	Back (Painted)	1
21	00-354476-00002	Back (SST)	1
22	00-422715-00001	Panel-Side (RH)(Painted)	1
23	00-422724-00001	Panel-Side (LH)(Painted)	1
24	00-422715-00002	Panel-Side (RH)(SST)	1
25	00-422724-00002	Panel-Side (LH)(SST)	1
26	00-347565-00001	Insulation Retainer Assy.	1
27	00-354262-00001	Blower	1
28	00-422786-00002	Motor	1
29	00-347786-00002	Motor Mount Assy.	1
30	SC-116-84	Cap Screw 5/16-18 x 1 1/8 Hex Hd.	4
31	WS-029-46	Washer	4
32	NS-046-86	Nut Assy. 5/16-18 "KEPS" Hex	2
33	00-358723-00001	Spacer - Steel	2
34	00-360869-000G1	Blower Baffle Weldment (Enamel)	1
35	00-360869-000G2	Blower Baffle Weldment (SST)	1
36	00-422714-00001	Cover-Lower	1
37	00-422592-00001	Sill Door	1
38	00-347498-00003	Guide-Rack (LH)	1
39	00-347498-00004	Guide-Rack (RH)	1
40	00-422590-00001	Support-Door Upper Reversible	1
41	00-422588-00001	Plate-Cover	1
42	00-347593-00001	Cover-Top	1
43	00-422595-00001	Top (Painted)	1
44	00-422595-00002	Top (SST)	1
45	00-354482-00001	Vent Extension	1
	00-353948-00002	Caster Assy. (Swivel)	2



DOOR

DOOR

ILLUS. PL-52414	PART NO.	NAME OF PART	AMT.
1	00-357929-00001	Handle-Door (Incls. items 2, 3 & 4)	1
2	SC-113-98	Mach. Screw 10-24 x 1/2 Hex Washer Hd.	3
3	00-356563-00001	Grip - Front	1
4	00-356563-00002	Grip - Rear	1
5	SC-053-41	Mach. Screw 1/4-20 x 1/2 Truss Hd. SST	2
6	WL-019-22	Lockwasher 1/4 Ext.	2
7	00-357877-00001	Shim - Door Strike	2
8	00-358542-00001	Strike - Door	1
9	00-350543-00006	Mach. Screw 10-32 x 1/2 Phil. Pan Hd.	2
10	WL-019-35	Lockwasher 10 Int	2
11	00-360887-00001	Panel-Outer Door (W/Window)	1
12	00-350543-00006	Mach. Screw 10-32 x 1/2 Phil. Pan Hd.	2
13	00-359703-000G1	Door Frame Assy.	1
14	SD-034-62	Self-Tapping Screw 10-32 x 1/2 Hex Washer Hd., Type T	4
15	00-358534-00002	Window Assy.	1
16	00-350543-00006	Mach. Screw 10-32 x 1/2 Phil. Pan Hd.	7
17	00-360889-000G1	Panel-Inner Door (W/Window)	1
18	00-347080-00002	Bearing - Door Shaft	1
19	00-343143-00001	Washer	2

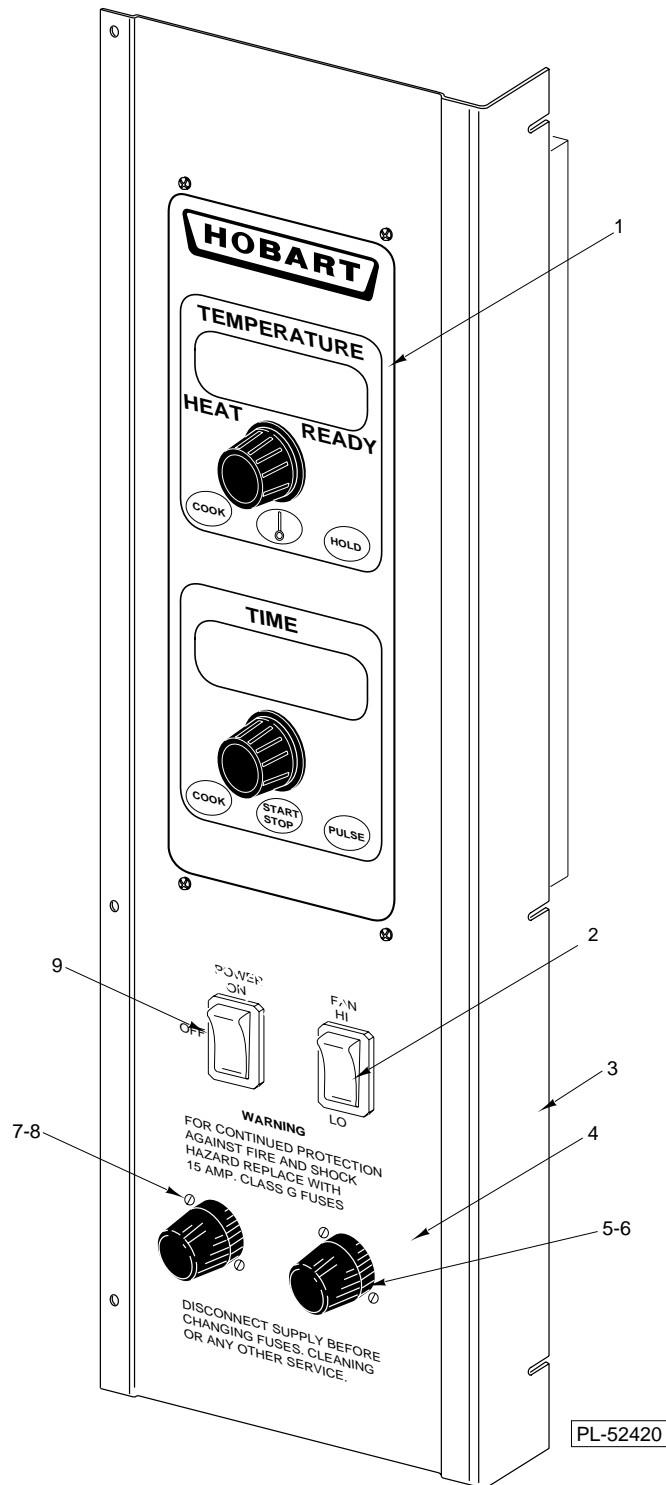


PL-52320

CONTROL PANEL (HEC20)

CONTROL PANEL (HEC20)

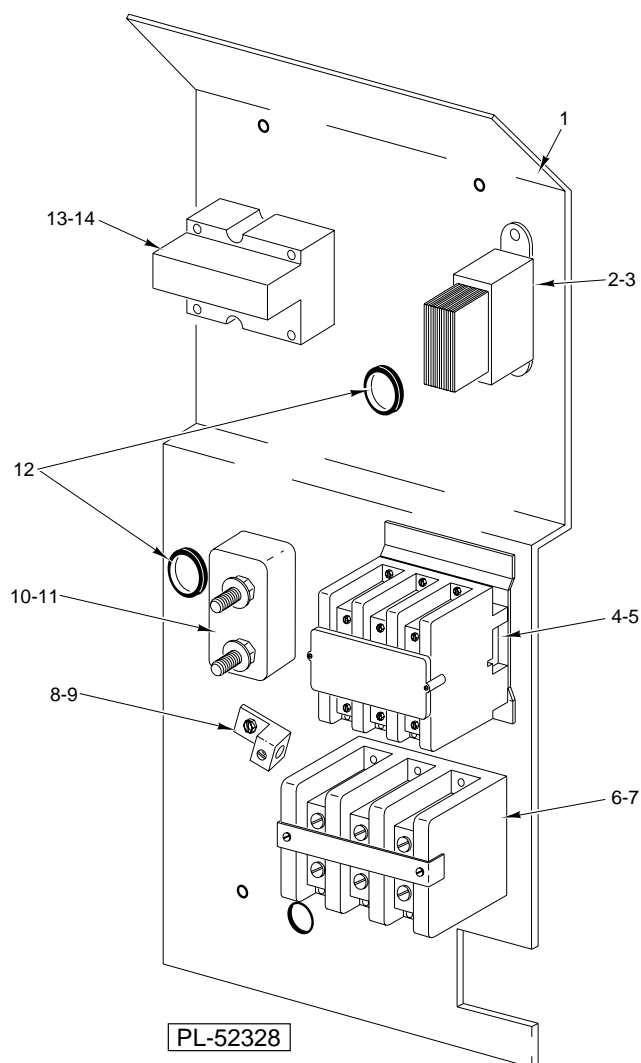
ILLUS. PL-52320	PART NO.	NAME OF PART	AMT.
1	00-422562-000G1	Panel-Control	1
2	00-340324-00008	Switch (4P.D.T.)	1
3	00-340324-00009	Switch (D.P.D.T.)	1
4	00-354575-00001	Light Indicator (On/Heat) (200-240V)	1
5	00-353613-00002	Controller - Temperature	1
6	SC-114-83	Mach. Screw 6-32 x 1/4 Pan Hd.	2
7	WS-028-20	Washer	2
8	00-411690-00002	Timer (200-240 V.)(1 Hr.)	1
9	00-411499-00003	Buzzer (230 V.)	1
10	SD-034-49	Self-Tapping Screw 8-32 x 1/2 Hex Washer Hd., Type T	1
11	WL-014-10	Lockwasher 1/4 Ext. "Shakeproof"	1
12	FE-019-40	Fuse 300V, 15A	2
13	FE-023-55	Holder - Fuse	2
14	00-360878-00001	Overlay-Control Panel	1
15	SC-114-27	Mach. Screw 8-32 x 1/2 Phil. Pan Hd.	4
16	NS-046-51	Nut Assy. 8-32 Hex	4
17	00-358538-00001	Plate - Dial Timer	1
18	00-411242-00001	Knob	2
19	SC-114-83	Mach. Screw 6-32 x 1/4 Pan Hd.	2
20	WS-028-20	Washer	2
21	00-358539-00001	Plate - Temperature Dial (Fahrenheit)	1
	00-422663-000G1	Control Panel Assy.	1
	00-354319-00001	Probe Assy.	1



**CONTROL PANEL (HEC20D)
COMPUTERIZED CONTROLS**

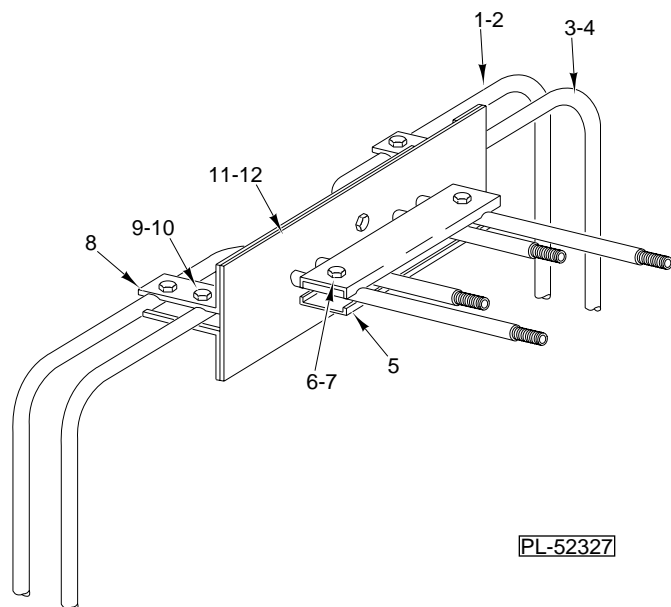
**CONTROL PANEL (HEC20D)
COMPUTERIZED CONTROLS**

ILLUS. PL-52420	PART NO.	NAME OF PART	AMT.
1	00-355903-00005	Controller W/Cook, Hold & Pulse	1
2	00-358628-00002	Switch - Rocker (2 Position)	1
3	00-422665-000G1	Panel-Control	1
4	00-422667-00001	Overlay	1
5	FE-023-55	Holder - Fuse	2
6	FE-019-40	Fuse 300V, 15A	2
7	NS-046-51	Nut Assy. 8-32 Hex	4
8	SC-114-27	Mach. Screw 8-32 x 1/2 Phil. Pan Hd.	4
9	00-358628-00001	Switch - Rocker (3 Position)	1
	00-422669-000G1	Control Panel Asys. (Incls. items 1 thru 9)	1
	00-920883-00002	Probe - Thermocouple W/40" Leads	1
	00-342132-00001	Guard-Thermo	1



COMPONENT PANEL

ILLUS. PL-52328	PART NO.	NAME OF PART	AMT.
1	00-422712-00001	Panel-Component	1
2	00-358629-00001	Transformer-Control (HEC20D)	1
3	SD-034-49	Self-Tapping Screw 8-32 x 1/2 Hex Washer Hd., Type T	2
4	00-411497-000C5	Contactator 3 pole	1
5	SD-034-49	Self-Tapping Screw 8-32 x 1/2 Hex Washer Hd., Type T	2
6	00-410472-00008	Terminal Block	1
7	SD-034-49	Self-Tapping Screw 8-32 x 1/2 Hex Washer Hd., Type T	2
8	00-417856-00001	Lug - Grounding (With Set Screw)	1
9	SD-034-49	Self-Tapping Screw 8-32 x 1/2 Hex Washer Hd., Type T	2
10	00-417934-000G1	Porcelain - Block Assy.	1
11	SD-034-52	Self-Tapping Screw 8-32 x 1 Hex Washer Hd., Type T	2
12	FE-016-32	Bushing-Snap (Electrical)	2
13	00-821875-00002	Relay-Solid State 50A (HEC20D)	1
14	SD-034-49	Self-Tapping Screw 8-32 x 1/2 Hex Washer Hd., Type T	2
	00-422934-000G1	Component Panel Assy. (HEC20D)(Incls. items 1 thru 14)	1
	00-422934-000G2	Component Panel Assy. (HEC20)(Incls. items 1 & 4 thru 12)	2



PL-52327

ELECTRIC HEATERS

ILLUS. PL-52327	PART NO.	NAME OF PART	AMT.
1	00-351393-00002	Heater Unit Assy. (Outer)(208V)	1
2	00-351393-00004	Heater Unit Assy. (Outer)(240V)	1
3	00-351393-00001	Heater Unit Assy. (Inner)(208V)	1
4	00-351393-00003	Heater Unit Assy. (Inner)(240V)	1
5	00-342131-00001	Clamp-Large	2
6	SC-114-02	Mach. Screw 10-32 x 3/4 Slotted Hex Washer Hd.	2
7	NS-046-88	Nut Assy. 10-32 HEX "KEPS"	2
8	00-342133-00001	Clamp-Small	6
9	SC-114-02	Mach. Screw 10-32 x 3/4 Slotted Hex Washer Hd.	6
10	NS-046-88	Nut Assy. 10-32 HEX "KEPS"	6
11	00-347430-00001	Seal Plate Assy.	1
12	00-342145-00001	Plate	1
	00-347563-00001	Cover-Heater Unit	1
	00-347494-00001	Heater Assy. (208V) (Incls. items 1, 3, 5 & 7 thru 12)	1
	00-347494-00002	Heater Assy. (240V) (Incls. items 2, 4, 5, 6, 8, 10, 11 & 12)	1

OPTIONS AND ACCESSORIES

ILLUS. PL-52417	PART NO.	NAME OF PART	AMT.
	00-347498-00003	Guide-Rack (LH)	1
	00-347498-00004	Guide-Rack (RH)	1
	00-347497-00002	Rack	AR
	00-348164-00001	Leg	4
	00-341655-00006	Caster - 6" High (Swivel)(W/Brake)	2
	00-341655-00007	Caster - 6" High (Rigid)	2
	00-347798-00001	Stand Assy.	1
	00-347497-00002	Rack	1
	00-352786-00001	Rack Accessory	1
	00-342150-00006	Leg Assy.	4
	00-342150-00007	Leg Assy.	4