

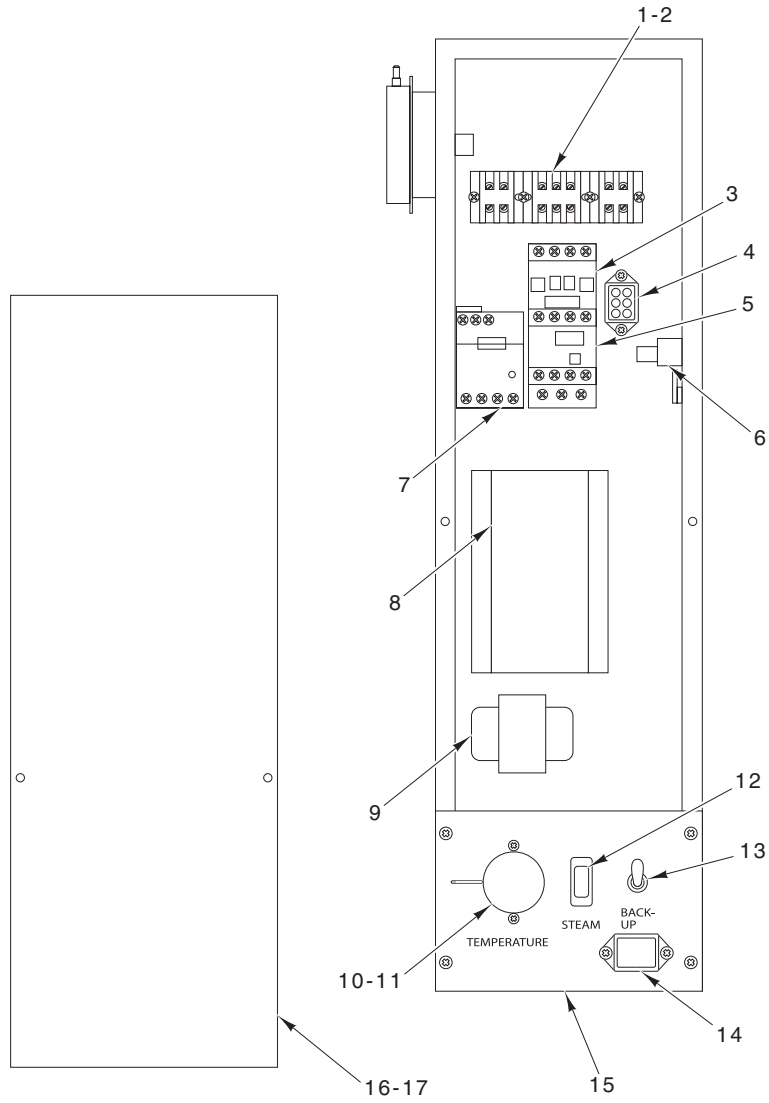


**CATALOG OF  
REPLACEMENT  
PARTS**

**DOUBLE RACK  
GAS OVEN**

**HBA2G**

**ML-132280**



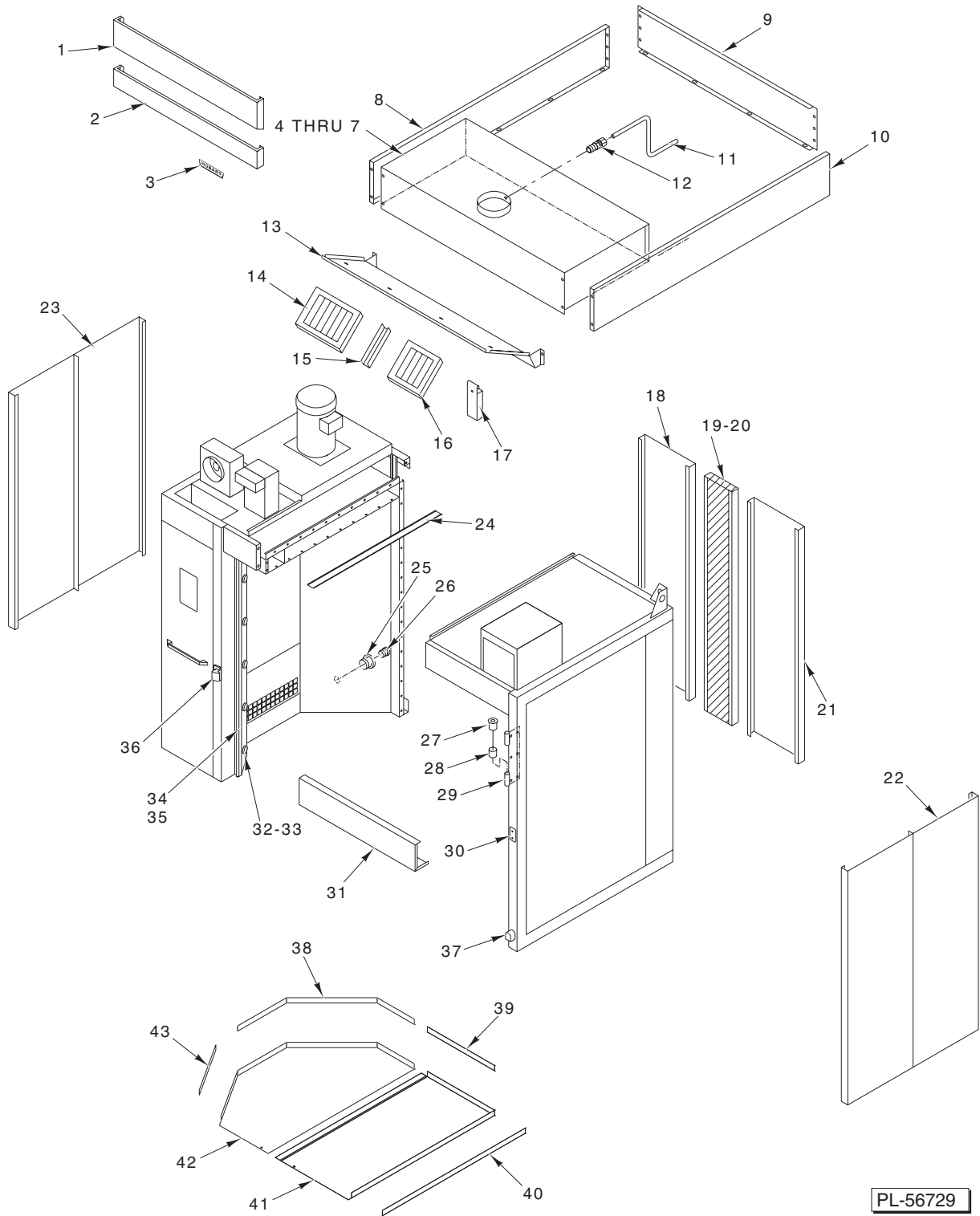
PL-56730

**COMPONENT BOX**

**COMPONENT BOX**

ILLUS.	PART NO.	NAME OF PART	AMT.
	PL-56730		
1	01-1000V5-00105	Terminal – Section (600 V.) (Flat Base) .....	7
2	01-1000V5-00106	End- Section (600 V.) (Flat Base) .....	3
3	01-1000V6-00165	Contactor – Blower Circulation .....	1
4	01-1000V6-00189	Relay – Overload (0.8-1.2 Amp.) .....	1
5	01-1000V6-00121	Overload (4-6 Amp.) .....	1
6	01-1000V6-00118	Thermostat – Hi Limit (550 Deg.) .....	1
7	01-1000V6-00186	Contactor (3 Pole) (2 Hp.) .....	1
8	01-1000V9-00170	Control – Ignition (3 TFI, No Reset) .....	1
9	01-100V10-00111	Transformer (120-240 V.) .....	1
10	01-100V18-00149	Knob – Thermostat .....	1
11	01-1000V6-00219	Thermostat 500 Deg. Variable (Not Shown) .....	1
12	01-1000V6-00221	Switch – MOM Transfer .....	1
13	01-1000V6-00220	Switch – Toggle 4 DPT .....	1
14	01-1000V6-00070	Relay – DPDT (1/4 Hp., 120 VAC) .....	1
15	01-1M5084-00001	Plate – Backup Control ID .....	1
16	01-1M5090-00001	Cover – Component Box W/O Backup Unit (24 In.) .....	1
17	01-1M5090-00002	Cover – Component Box W/Backup Unit (19.5 In.) (Shown) .....	1
	01-1M5083-00001	Backup Control Unit (Incls. Items 10 Thru 15) .....	1
	01-1M1758-00001	Plug – Pipe 3/8 In. NPT, PLTD (W/O Backup Unit) .....	1
	01-1000V5-00014	Tie – Cable .....	4

DOUBLE RACK GAS OVEN REPLACEMENT PARTS



PL-56729

CABINET

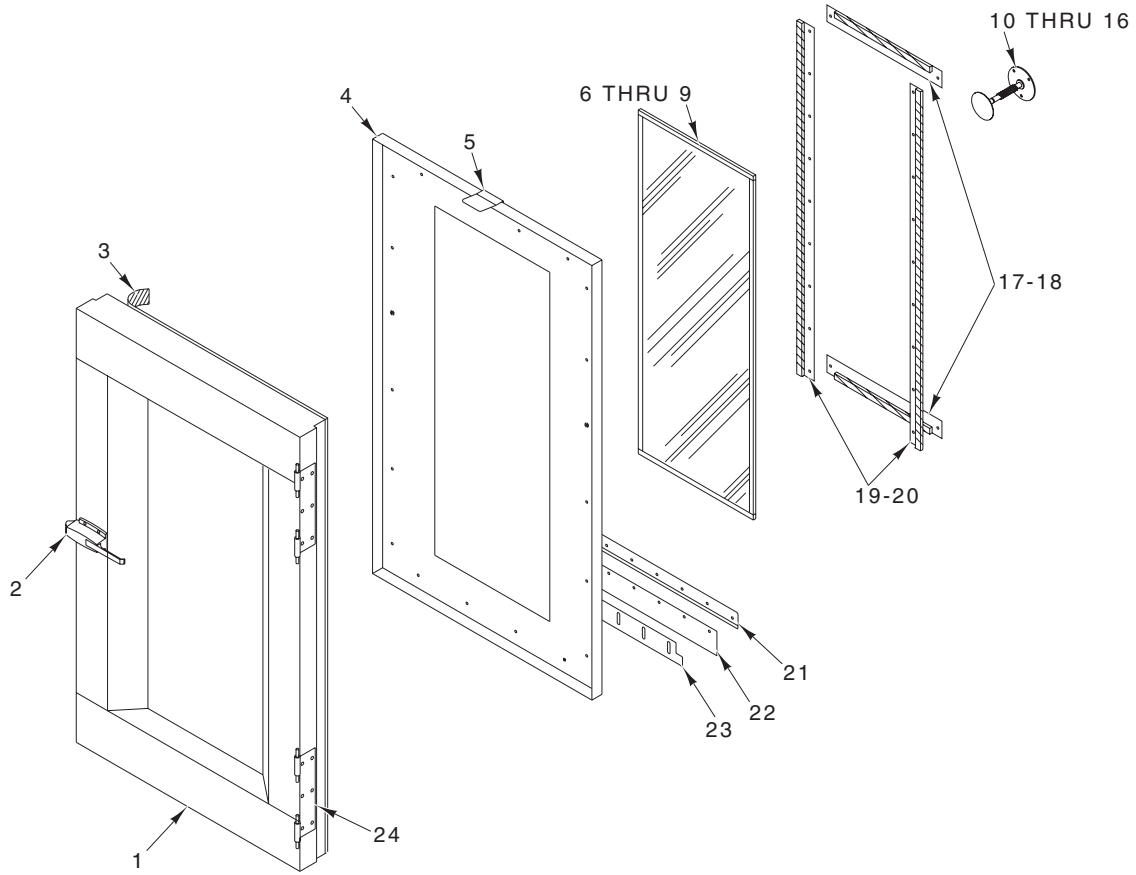
CABINET

ILLUS.	PART NO.	NAME OF PART	AMT.
	PL-56729		
1	01-1M5147-00004	Trim – Hood, Upper .....	1
2	01-1M5148-00004	Trim – Hood, Lower .....	1
3	01-100V16-00531	Logo .....	1
4	01-1M5136-00001	Hood Assy. Type I (Incls. Items 1, 2, 3, 6, 8, 9, 10, & 13 Thru 16) .....	1
5	01-1M5136-00002	Hood Assy. Type II (Incls. Items 1, 2, 3, 6 Thru 10, 13, & 15) .....	1
6	01-1M5148-00002	Cover – Facia Trim .....	2
7	01-1M5147-00002	Panel – Plenum (Type II Hood) .....	2
8	01-1M2383-00004	Trim (LH) .....	1
9	01-1M2274-00002	Trim Rear .....	1
10	01-1M2383-00003	Trim (RH) .....	1
*11	01-100V17-00004	Tube 1/4 O.D. x 72 In. Lg. (Alum.) .....	1
12	01-100V17-00280	Fitting – Compression 1/8 NPT .....	1
13	01-1M5140-00002	Deflector – Air .....	1
14	01-100V18-00088	Filter – Hood 16 x 16 W/Drop (Type I Hood) .....	3
15	01-1M2247-00002	Filler – Filter .....	1
16	01-100V18-00089	Filter – Hood 16 x 20 W/Drop (Type I Hood) .....	1
17	01-1M3032-00001	Cup – Hood Grease .....	1
18	01-1M5267-00001	Skin – Outer .....	1
19	01-1M2192-00003	Panel – Outer Wall .....	1
20	01-1M2120-00003	Skin – Outer .....	1
21	01-1M2120-00004	Skin – Outer .....	1
22	01-1M2120-00011	Skin – Outer .....	2
23	01-1M2120-00012	Skin – Outer .....	2
**24	01-100V21-00056	Tape – Fiberglass .....	AR
25	01-100V17-00266	Bushing 3/8 NPT x 3/4 NPT (Brass) .....	1
26	01-1M1758-00001	Plug – Pipe (3/8 NPT, PLTD) .....	1
27	01-1000V0-00038	Bearing – Journal (Nylon) .....	4
28	01-1000V0-00031	Bearing – (Nylon) (W/Shoulder) .....	4
29	01-1M1739-00001	Hinge – Door (Female) .....	2
30	01-1M1711-00003	Plate – Front Cover .....	1
31	01-1M5030-00001	Skin – Outer Header .....	1
***32	01-1000V7-00027	Lamp – Oven (Complete) .....	5
33	01-1000V7-0027L	Lens .....	5
34	01-1M5289-00002	Gasket – Loading Door 50 In. (Top) .....	1
35	01-1M5289-00001	Gasket – Loading Door 83 In. (Side) .....	2
36	01-100V18-0120A	Strike – Chrome Plated .....	1
37	01-1M1758-00002	Ell – Street (3/8 x 90 Deg., PLTD) .....	1
38	01-1M5004-00002	Trim – Floor .....	1
39	01-1M5004-00001	Trim – Floor .....	1
40	01-1M2073-00003	Trim – Floor .....	1
41	01-1M5007-00002	Skin – Floor (RH) .....	1
42	01-1M5007-00001	Skin – Floor (LH) .....	1
43	01-1M5004-00003	Trim – Floor .....	1
	01-1000V4-00074	Mach. Screw 1/4-20 x 3 Flat Hd. ....	4
	01-1M2346-00001	Collar – Door Switch .....	1
	01-100V04-00073	Anchor – Drop-in .....	9
	01-1000V4-0073A	Tool – Setting .....	1

\*Sold Per Inch.

\*\*Sold Per Foot.

\*\*\*Replacement bulb is standard 40 W. appliance bulb.



PL-56727

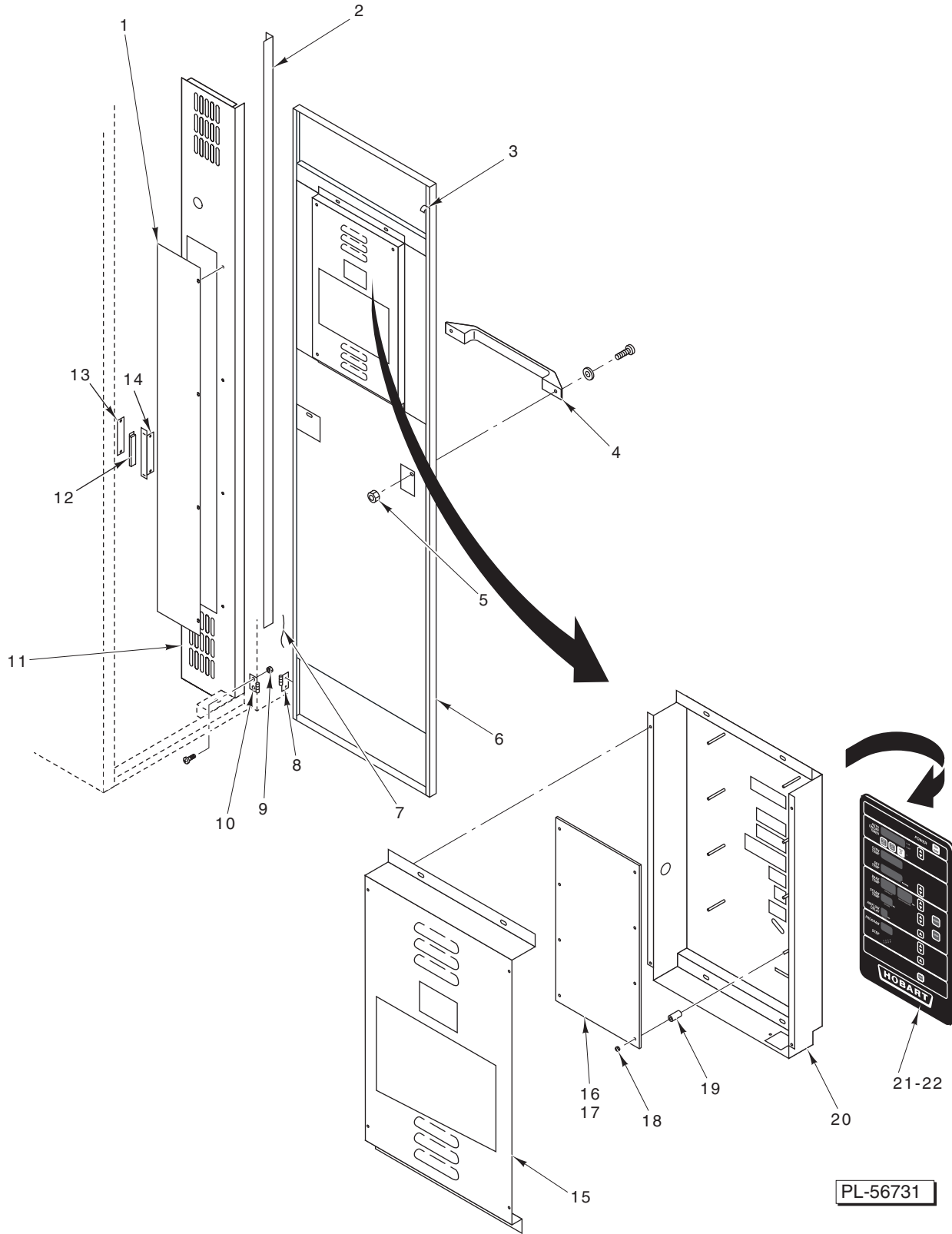
**LOADING DOOR**

LOADING DOOR

ILLUS. PL-56727	PART NO.	NAME OF PART	AMT.
1	01-1M4990-00001	Weldment – Door .....	1
2	01-100V18-0120B	Handle – Chrome Plated .....	1
*3	01-100V21-00065	Tape – Fiberglass (1/8 x 1) .....	26
4	01-1M4991-00001	Skin – Inner Door .....	1
5	01-1M2254-00001	Guide – Door Switch Actuator .....	1
6	01-1M4171-00003	Window Glass Assy. (Incls. Items 21, 22, & 23) .....	1
7	01-100V16-0102J	Glass – Tempered 1/4 In. Thick .....	1
8	01-100V21-0005C	Caulk – Silicone (Clear) .....	AR
*9	01-100V21-00060	Gasket – U (Silicone) .....	13.5
10	01-1M1435-00002	Handle – Interior Door (Incls. Items 11 Thru 16) .....	1
11	01-1M1759-00001	Head – Interior Door Handle .....	1
12	01-100V20-00010	Spring – Compression 7/16 O.D. ....	1
13	01-1M1760-00003	Shaft – Interior Door Handle .....	1
14	01-1M1436-00001	Seal – Interior Door Handle .....	1
15	01-1M1761-00001	Plate – Interior Door Handle .....	1
16	01-1000v1-00036	Ring – Retaining 7/16 In. (Zinc) .....	1
17	01-1M2937-00003	Retainer – Window .....	2
**18	01-100V21-0039A	Tape – Silicon (1/8 x 3/4) .....	26
19	01-1M2937-00001	Retainer – Window .....	2
**20	01-100V21-0039A	Tape – Silicon (1/8 x 3/4) .....	120
21	01-1M2255-00002	Clamp – Floor Sweep .....	1
22	01-1M2778-00002	Strip – Silicon Floor Seal .....	1
23	01-1M2769-00002	Support – Floor Seal .....	1
24	01-1M1738-00001	Hinge – Door (Male) .....	2
	01-1M4889-00001	Door Assy. – Loading (Incls. Items 1 Thru 6, 10, 17, 19, & 21 Thru 24) .....	1
	01-1000V4-00041	Mach. Screw Cres. Phil. Hd. ....	32
	01-1000V4-00074	Mach. Screw Cres. Flat Hd. ....	16

\*Sold Per Foot.

\*\*Sold Per Inch.

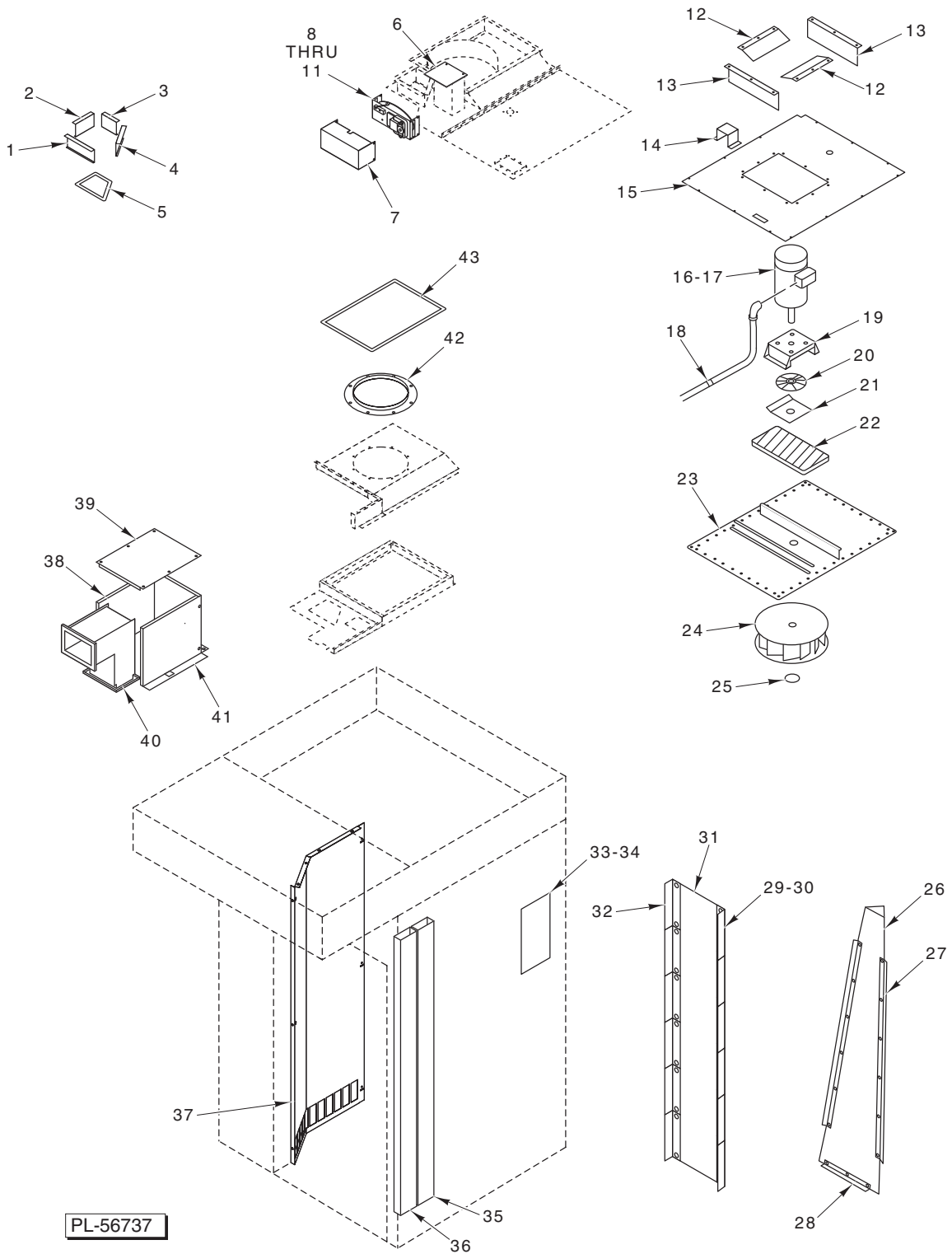


**CONTROL CABINET, DOOR, AND CONTROLLER**



**CONTROL CABINET, DOOR, AND CONTROLLER**

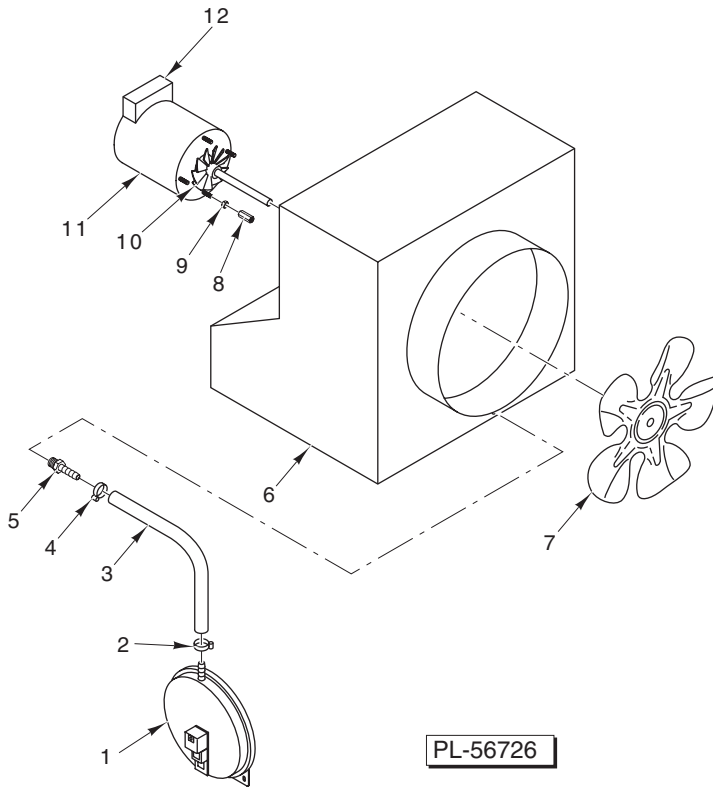
ILLUS.	PART NO.	NAME OF PART	AMT.
PL-56731			
1	01-1M5150-00001	Cover – Light Access .....	1
2	01-1M5175-00001	Angle – Control Cabinet .....	1
3	01-100V21-00092	Gasket – PVC Extruded “B” Shape (6 ft.) .....	1
4	01-100V18-00091	Handle .....	1
5	01-1000V4-00165	Nut Hex .....	2
6	01-1M4993-00001	Door – Control .....	1
7	01-1M2777-00001	Strap – Ground .....	1
8	01-1M1934-00001	Hinge – Control Door (Male) .....	3
9	01-1000V4-00165	Nut Hex .....	6
10	01-1M1934-00002	Hinge – Control Door (Female) .....	3
11	01-1M5023-00003	Skin – Control Cabinet .....	1
12	01-100V16-00055	Magnet .....	1
13	01-1M1911-00102	Backer – Magnet Holder .....	1
14	01-1M1911-00101	Body – Magnet Holder .....	1
15	01-1M5060-00001	Cover – Controller .....	1
16	01-100V16-00566	PC Board – Control (Standard) .....	1
17	01-100V16-00565	PC Board – Control (Advanced) .....	1
18	01-1000V4-00165	Nut .....	8
19	01-1M3001-00002	Spacer – PC Board .....	8
20	01-1M4994-00001	Panel – Controller .....	1
21	01-100V16-0545A	Overlay – Controller (Std.) .....	1
22	01-100V16-0546A	Overlay – Controller (Adv.) .....	1
	01-100V10-00223	Alarm – Piezo Pre-wired .....	1
	01-100V11-0030A	Connector – Seal Flex (3/8 x 90 Deg.) .....	2
	01-1M1937-00003	Plate – Harness .....	1
	01-100V16-00584	Label – Control Status .....	1
	01-1M4992-00001	Control Door Assy. ....	1



**BLOWER, PANELS, AND VENTS**

ILLUS. PL-56737	PART NO.	NAME OF PART	AMT.
1	01-1M5015-00003	Retainer – Exhaust Stack Packing .....	1
2	01-1M5015-00002	Retainer – Exhaust Stack Packing .....	1
3	01-1M5015-00004	Retainer – Exhaust Stack Packing .....	1
4	01-1M5015-00001	Retainer – Exhaust Stack Packing .....	1
*5	01-100V21-00072	Rope – Glass 3/4 Dia. ....	AR
6	01-1M5104-00001	Lid – Vent .....	1
7	01-1M5101-00001	Cover – Vent Bracket .....	1
8	01-1M5103-00001	Cam – Vent .....	1
9	01-1M5102-00001	Bracket – Vent .....	1
10	01-1000V6-00001	Micro-Switch W/Roller .....	1
11	01-1000V8-00109	Motor – Vent Gear .....	1
12	01-1M1895-00001	Cover – Blower Insulation .....	2
13	01-1M2227-00001	Liner – Blower Insulation Cover .....	2
14	01-1M1433-00001	Protector – Thermocouple .....	1
15	01-1M5027-00001	Cover – Blower Insulation .....	1
16	01-1000V8-00052	Motor – Blower (3 Ph., 1 1/2 Hp.) .....	1
17	01-1000V8-00067	Motor – Blower (1 Ph., 2 Hp.) .....	1
18	01-100V11-00073	Clamp – Conduit 1/2 .....	2
19	01-1M1360-00001	Mount – Blower Motor .....	1
20	01-1M2438-00001	Heat Slinger Assy. ....	1
21	01-1M1794-00001	Cover – Blower Insulation .....	1
22	01-100V21-00058	Insulation – Blower .....	1
23	01-1M5026-00001	Weldment – Blower Mount .....	1
24	01-1000V8-00058	Wheel – Blower (18 In. Dia.) .....	1
25	01-1000V1-00028	Ring – Snap .....	1
26	01-1M2560-00002	Retainer – Pressure Panel Side Wall .....	1
27	01-1M2579-00001	Wall – Inner Pressure Panel .....	1
28	01-1M2560-00001	Retainer – Pressure Panel Bottom Wall .....	1
29	01-1M3117-00001	Shutter – Pressure Panel 97 Deg. ....	6
30	01-1000V4-00020	Insert – Threaded 1/4-20 .....	24
31	01-1M2096-00002	Body – Pressure Panel Shutter Support .....	1
32	01-1M5176-00001	Shutter – Pressure Panel 90 Deg. ....	6
33	01-1M2557-00002	Guide – Pressure Panel Air (RH) .....	1
34	01-1M2557-00001	Guide – Pressure Panel Air (LH) .....	1
35	01-1M2566-00001	Duct – Side .....	1
36	01-1M2089-00001	Duct – Bottom Vent .....	1
37	01-1M5050-00001	Panel – Suction .....	1
38	01-1M2223-00001	Body – Duct Insulation Cover .....	1
39	01-1M2224-00001	Top – Duct Insulation Cover .....	1
40	01-1M2074-00001	Duct – Vent .....	1
41	01-1M2222-00001	Side – Duct Insulation Cover .....	1
42	01-1M2451-00002	Bell – Inlet .....	1
*43	01-100V21-00058	Tape – Fiberglass 1/4 x 1 .....	AR
	01-1M5171-00001	Angle – Shutter Casting .....	1
	01-1M5171-00002	Angle – Shutter Casting .....	1
	01-1M5025-00001	Blower Assy. (3 Ph.) (Incls. Items 21, 24, 25, 26, 28, 29, &30) .....	1
	01-1M5025-00002	Blower Assy. (1 Ph.) ( Incls. Items 22, 24, 25, 26, 28, 29, &30) .....	1

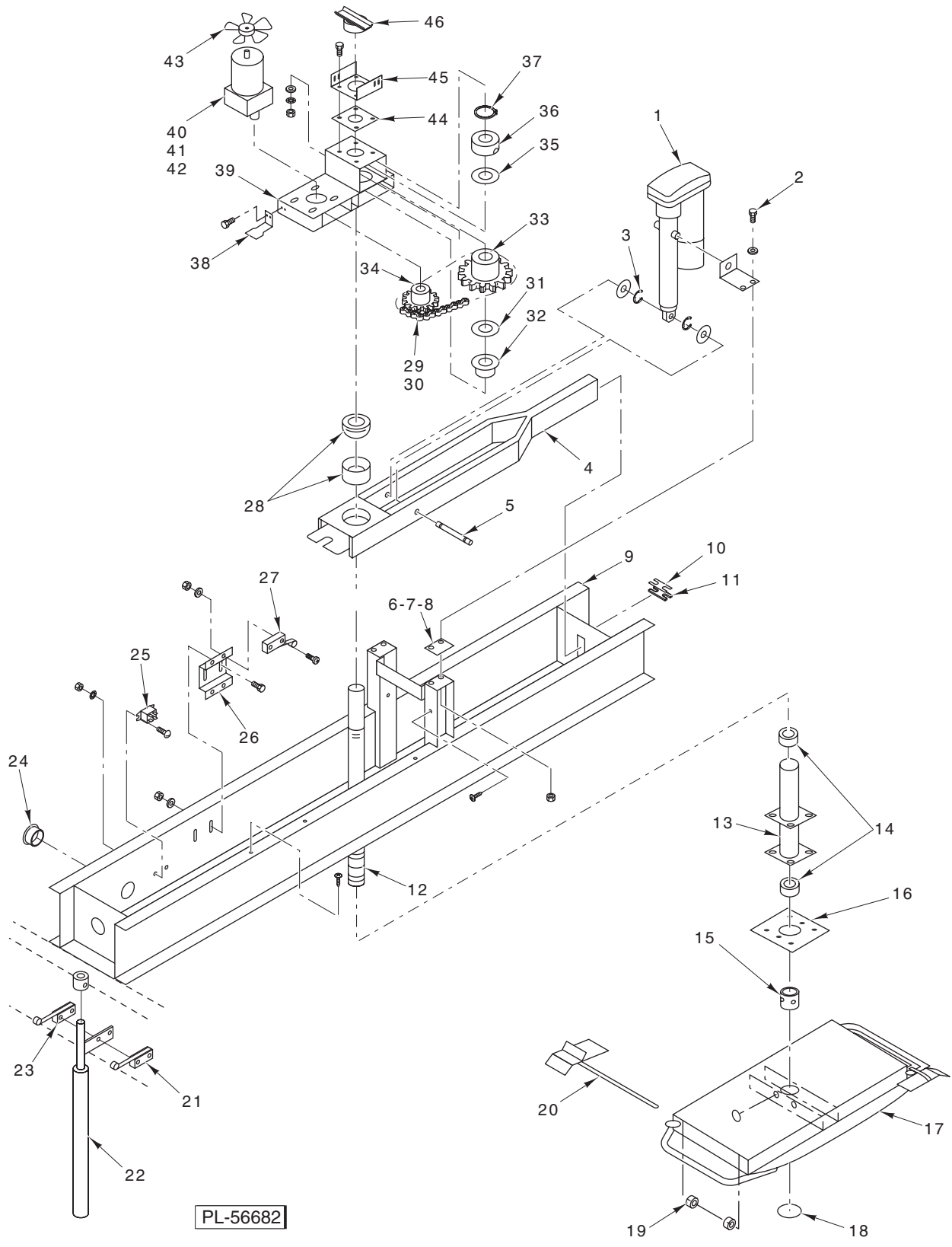
\* Sold per inch.



**DRAFT INDUCER**

**DRAFT INDUCER**

ILLUS.	PART NO.	NAME OF PART	AMT.
PL-56726			
1	01-1000V6-00222	Switch – Pressure .....	1
2	01-1000V1-00018	Clamp – Hose 1/4 I.D. x 7/16 O.D. ....	1
3	01-1A1023-00425	Tube – Black (Neoprene) .....	1
4	01-1000V1-00018	Clamp – Hose 1/4 I.D. x 7/16 O.D. ....	1
5	01-100V17-00345	Barb – Hose (Brass) .....	1
6	01-1M5157-00001	Draft Inducer Weldment .....	1
7	01-1000v8-000113	Blade – Fan 8 In. Dia. ....	1
8	01-1000V4-00220	Nut – Coupler 8-32 x 5/8 .....	4
9	NS-046-51	Nut 8-32 .....	4
10	01-1000V8-00099	Blade – Fan 2 In. Dia. ....	1
11	01-1M5273-00001	Motor – Venter (3000 RPM W/J-Box) .....	1
12	01-1000V8-00114	Box – Motor .....	1

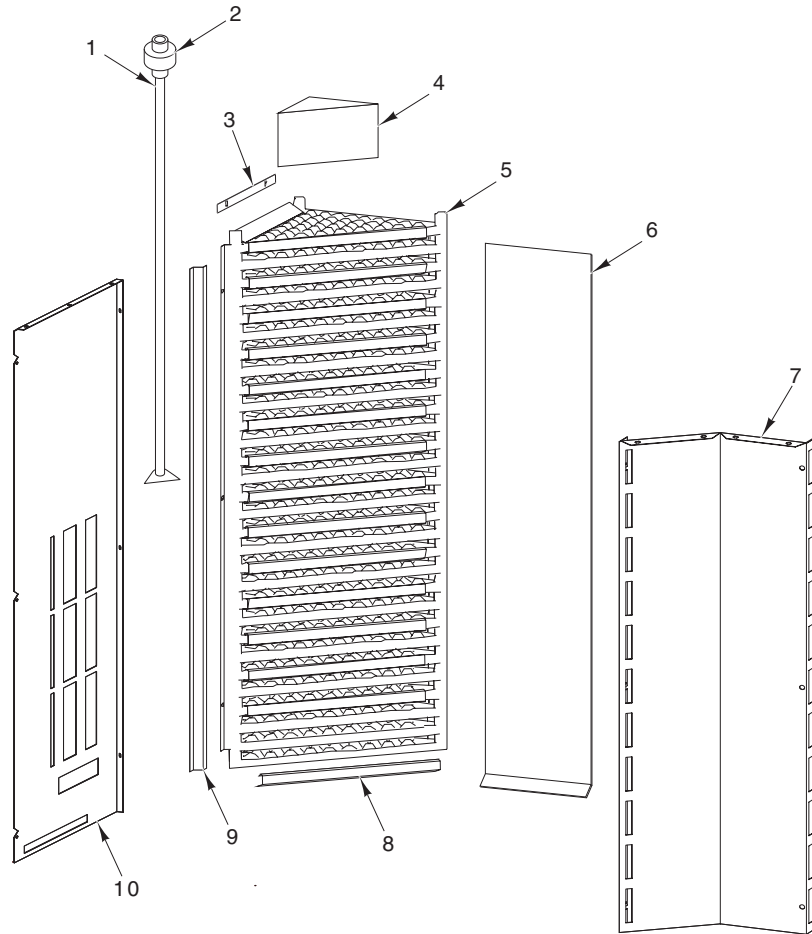


LIFTER AND ROTATOR

## LIFTER AND ROTATOR

ILLUS.	PART NO.	NAME OF PART	AMT.
	PL-56682		
1	01-1M2418-00001	Linear Actuator – Modified .....	1
2	01-1M2289-00001	Angle – Linear Actuator Support .....	2
3	01-1000V1-00037	Ring – Snap 1/2 In. Dia. ....	2
4	01-1M2304-00001	Arm .....	1
5	01-1M2290-00001	Shaft – Pivot (Linear Actuator Support) .....	1
*6	01-1M2766-00003	Shim (24 GA Steel) .....	AR
*7	01-1M2766-00002	Shim (24 GA Steel) .....	AR
*8	01-1M2766-00001	Shim (16 GA Steel) .....	AR
9	01-1M2298-00002	Weldment .....	1
10	01-1M2730-00001	Plate .....	1
11	01-1M2731-00001	Strip .....	1
12	01-1M2797-00001	Shaft (B Style Lift) .....	1
13	01-1M2140-00001	Housing – Rotator Shaft .....	1
14	01-1000V0-00055	Bearing – Rotator Shaft .....	2
15	01-1000V4-00199	Set Screw .....	4
16	01-1M1899-00001	Clamp – Rotator Housing .....	1
17	01-1M1799-00002	Rack – Carrier .....	1
18	01-100V15-00048	Plug – Nickel Plated (For 0.75 Hole) .....	1
19	01-1000V1-00013	Collar – Set 1/2 In. Dia. ....	1
20	01-1M2580-00001	Stop – Rack Carrier (B Style Carrier) .....	1
21	01-1000V6-00223	Switch – Lever DPST .....	1
22	01-1M2765-00001	Rod – Door Switch Actuator Pivot .....	1
23	01-1000V6-00065	Micro-Switch .....	1
24	01-1000V5-00073	Bushing – Snap 1/5 In. Dia. ....	1
25	01-1000V6-00070	Relay .....	1
26	01-1M2296-00001	Bracket – Micro-Switch .....	1
27	01-1000V6-00065	Micro-Switch .....	1
28	01-1000V0-00051	Bushing – Spherical .....	1
29	01-1000V3-00088	Link – Connecting .....	1
30	01-1000V3-0087A	Chain – Roller 20.125 In. ....	1
31	01-1000V0-00068	Washer – Thrust .....	1
32	01-1000V0-00054	Bearing – Flanged .....	1
33	01-1M2228-00001	Sprocket .....	1
34	01-1000V3-00105	Sprocket (17T) .....	1
35	01-1M2265-00001	Clutch – Slide .....	1
36	01-1M2264-00001	Collar – Set .....	1
37	01-1000V1-00004	Ring – Snap 1 1/2 In. ....	2
38	01-1M2489-00001	Actuator – Micro-Switch .....	1
39	01-1M2114-00001	Rotator – Weldment .....	1
40	01-1000V8-00111	Capacitor .....	1
41	01-1000V8-00110	Gear Motor .....	1
42	01-1000V8-0049D	Clamp – Capacitor .....	1
43	01-1000V8-00113	Blade – Fan 8 In. Dia. ....	1
44	01-1M1927-00001	Plate – Teflon .....	1
45	01-1M5085-00001	Plate – Rotator .....	1
46	01-1M5201-00001	Pointer .....	1
	01-1M5133-00001	Lifter Assy. (Incls. Items 1 Thru 5, 9, 10, 11, 21, 23, Thru 26) .....	1
	01-1M5037-00001	Harness – Lifter .....	1
	01-1000V6-00220	Micro-Switch .....	1
	01-1000V6-00065	Micro-Switch .....	1
	01-1000V5-00023	Pad – Mounting .....	6
	01-1000V5-00015	Nut – Wire .....	3
	01-1000V5-00014	Tie – Cable .....	6
	01-1A1757-00472	Wire Assy. ....	2
	01-1M2750-00001	Side – Lifter Cover .....	2
	01-1M2751-00002	Front – Lifter Cover .....	1
	01-1M2752-00001	Back – Lifter Cover .....	1

\*This part used intermittently and in varying quantities. Most lifter assemblies will not require this part, but a few will require one. A very few will require more than one.



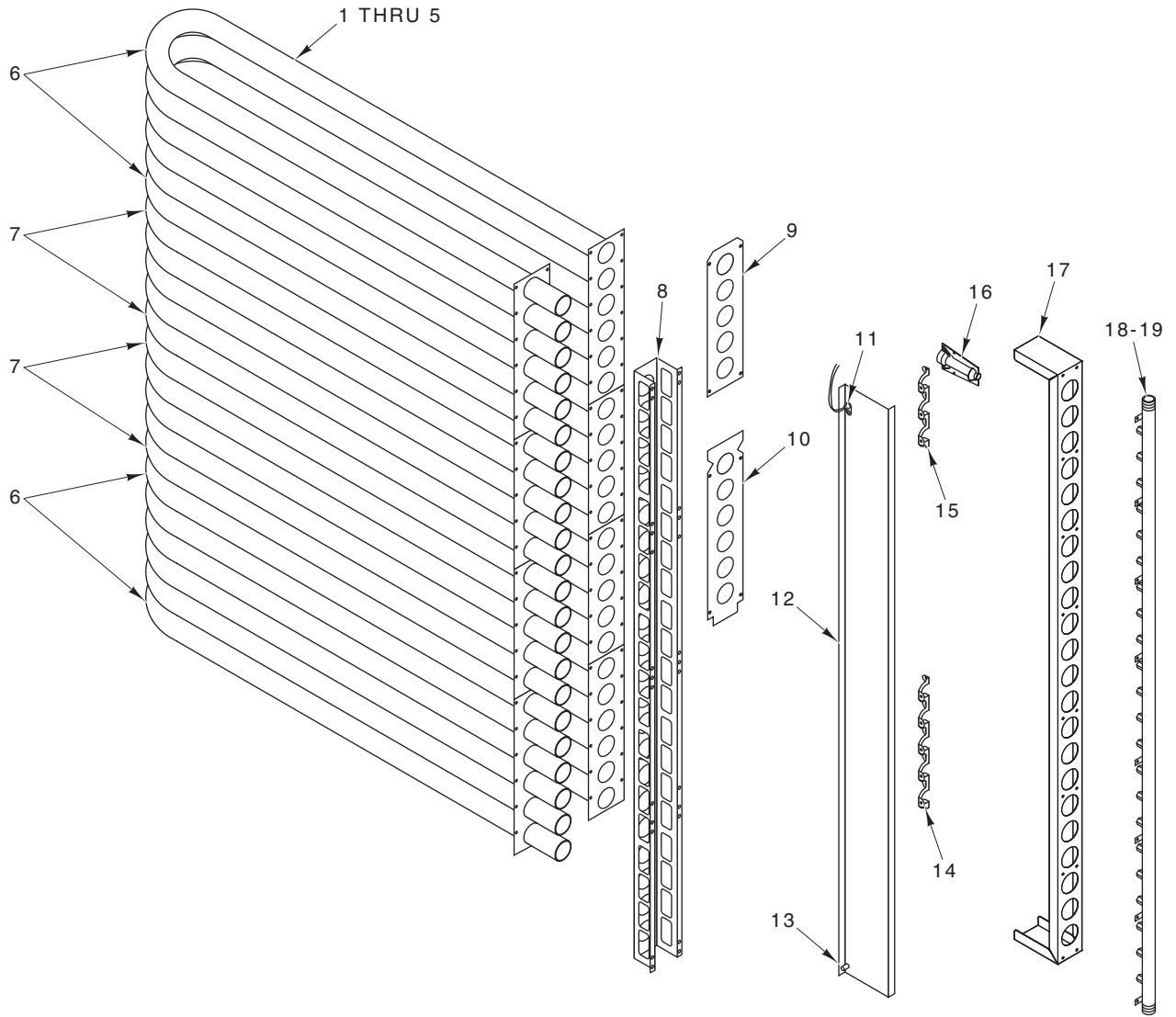
PL-56740

**STEAMER ASSEMBLY**



**STEAMER ASSEMBLY**

ILLUS.	PART NO.	NAME OF PART	AMT.
PL-56740			
1	01-1M5146-00001	Manifold Assy. – Steamer (Incls. Item 2) .....	1
2	01-100V17-00286	Union ½ In. Dia. NPT .....	1
3	01-1M5171-00001	Angle – Shutter Casting (Top Section) .....	1
4	01-1M5198-00001	Box Weldment – Steamer .....	1
5	01-100V16-00529	Casting – Steamer .....	30
6	01-1M5067-00001	Sheet – Splash .....	1
7	01-1M5051-00001	Panel – Steamer .....	1
8	01-1M5065-00001	Bracket – Water Guide .....	15
9	01-1M5171-00002	Angle – Shutter Casting (Side Section) .....	1
10	01-1M5049-00001	Panel – Steamer (Rear) .....	1

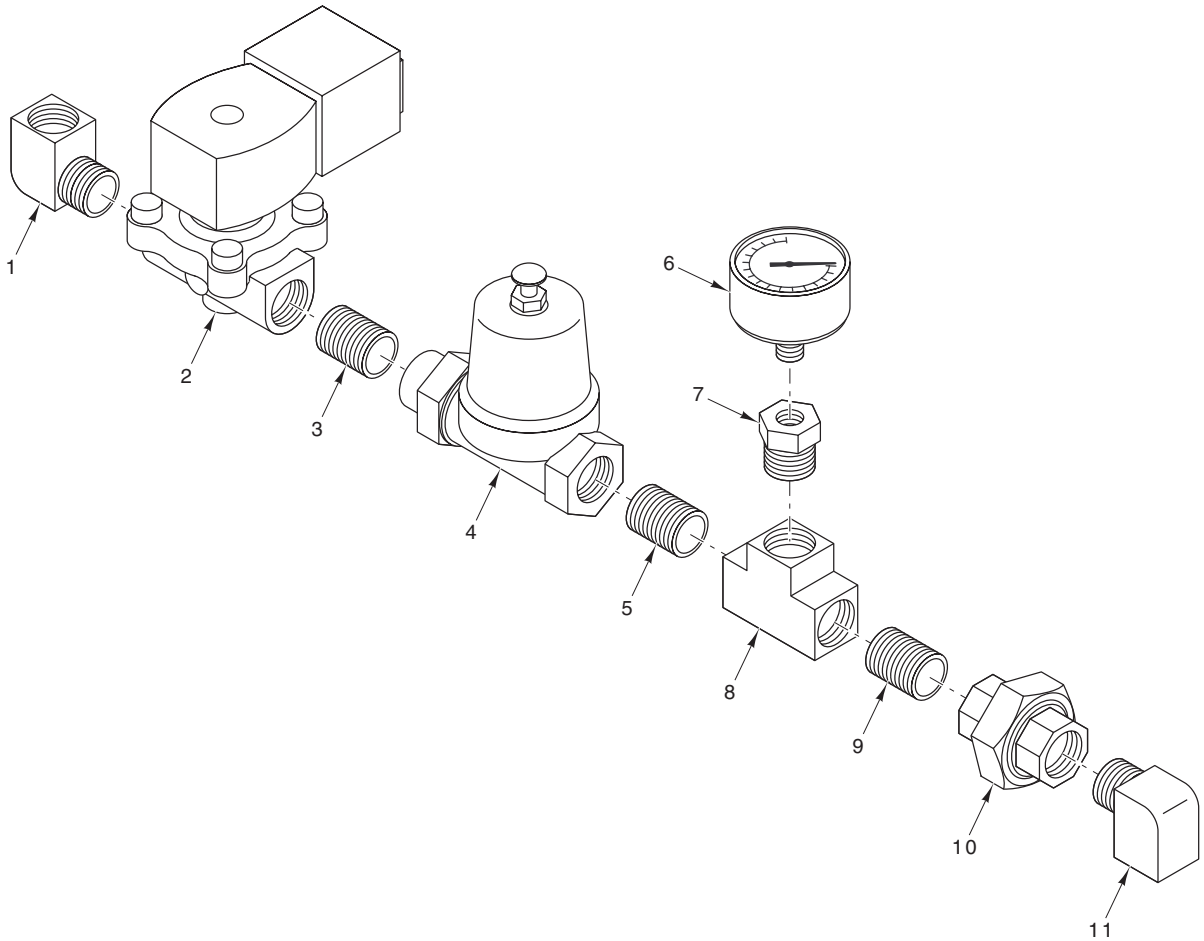


PL-56728

**GAS BURNER AND HEAT CIRCULATION**

**GAS BURNER AND HEAT CIRCULATION**

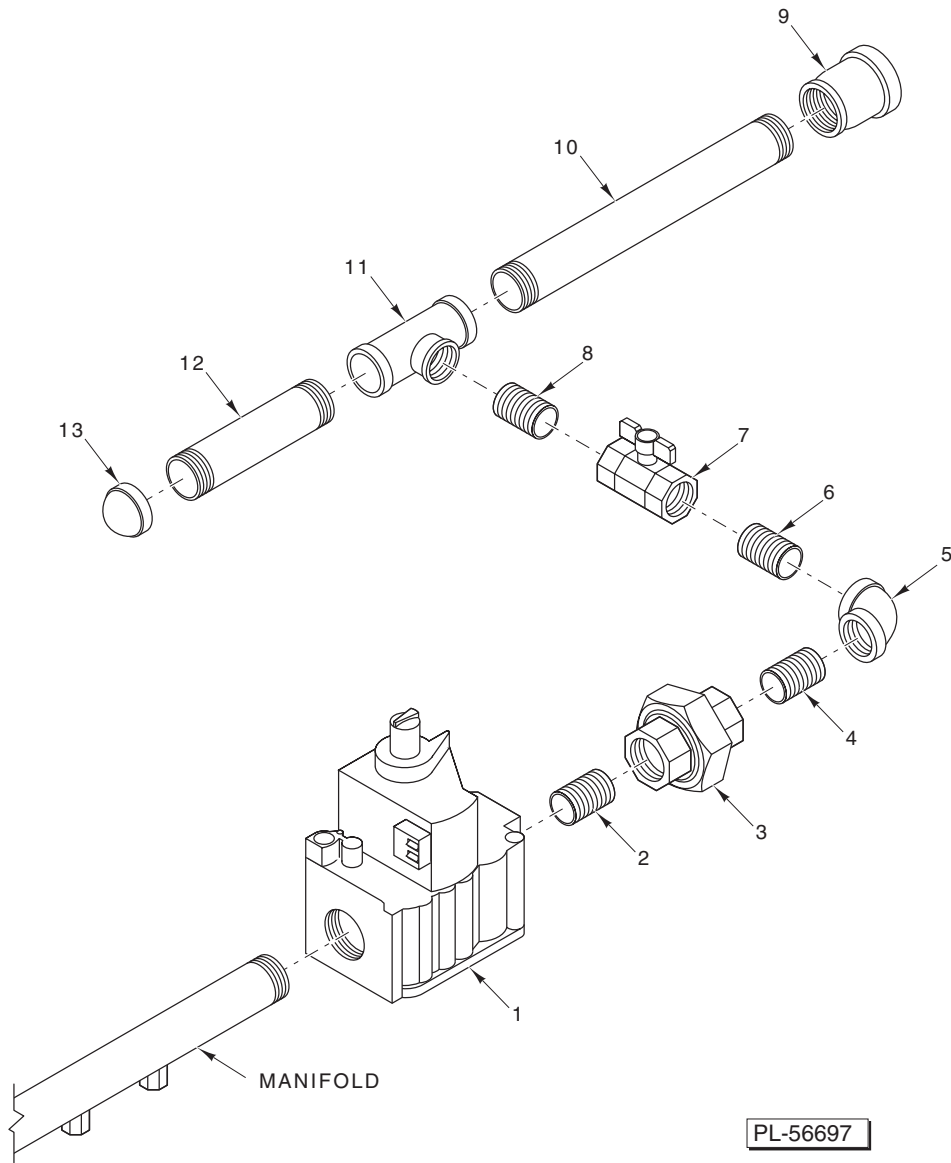
ILLUS. PL-56728	PART NO.	NAME OF PART	AMT.
1	01-1M5001-00001	Heat Exchanger Assy. (Incls. Items 2 Thru 7) .....	1
2	01-100V16-00559	Gasket – Heat Exchanger .....	4
3	01-100V16-00530	Gasket – Heat Exchanger .....	4
4	01-100V21-00065	Tape – Fiberglass .....	AR
5	01-100V21-00114	Sealant .....	AR
6	01-1M5028-00002	Tube Assy. – Weldment (6 Tube) .....	2
7	01-1M5028-00001	Tube Assy. – Weldment (5 Tube) .....	2
8	01-1M5046-00001	Angle Rack – Burner .....	1
9	01-1M5045-00001	Plate – Firing, Burner Rack .....	2
10	01-1M5045-00002	Plate – Firing, Burner Rack .....	2
11	01-1M5199-00001	Rod – Flame Sensor .....	1
12	01-1M5043-00001	Plate – Side, Burner Rack .....	1
13	01-1000V9-00149	Ignitor – Hot Surface .....	1
14	01-1M5044-00002	Mount – Burner (5) .....	2
15	01-1M5044-00001	Mount – Burner (3) .....	4
16	01-1000V9-00146	Burner – In-Shot (Crossover) .....	22
17	01-1M5064-00001	Enclosure – Burner Rack .....	1
18	01-100V16-0556A	Manifold Assy. (Nat.) .....	1
19	01-100V16-0556B	Manifold Assy. (L.P.) .....	1
	01-1M5047-00001	Plate Assy. – Burner (Incls. Items 11 Thru 16) .....	1
	01-1M5200-00001	Plate – Burner Spacer .....	1



PL-56698

**EXTERIOR WATER SUPPLY**

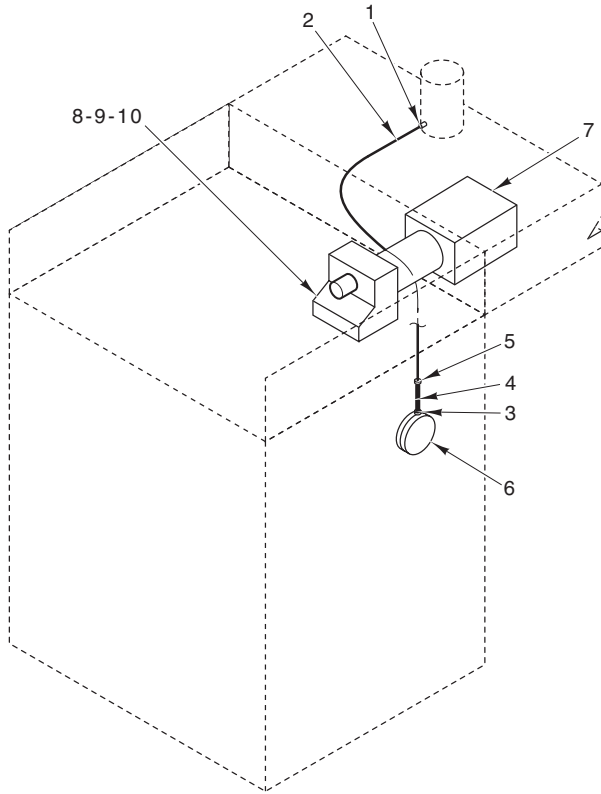
ILLUS.	PART NO.	NAME OF PART	AMT.
PL-56698			
1	01-100V17-00322	Eel 1/2 Street (Brass) .....	1
2	01-100V17-00274	Valve – Solenoid – Water (2 Way) (120 V.) .....	1
3	01-100V17-00288	Nipple 1/2 Dia. Close (Brass) .....	1
4	01-100V17-00330	Regulator – Water Pressure 1/2 NPTF (10-70 PSI) .....	1
5	01-100V17-00288	Nipple 1/2 Dia. Close (Brass) .....	1
6	01-100V17-00204	Gauge – Pressure (100 PSI) .....	1
7	01-100V17-00229	Bushing 1/2 NPT x 1/4 NPT (Brass) .....	1
8	01-100V17-00312	Tee 1/2 NPT (Brass) .....	1
9	01-100V17-00288	Nipple 1/2 Dia. Close (Brass) .....	1
10	01-100V17-00286	Union 1/2 Dia. NPT (Brass) .....	1
11	01-100V17-00322	Eel 1/2 Street (Brass) .....	1
	01-1M5111-00001	Water Supply Assy. ....	1



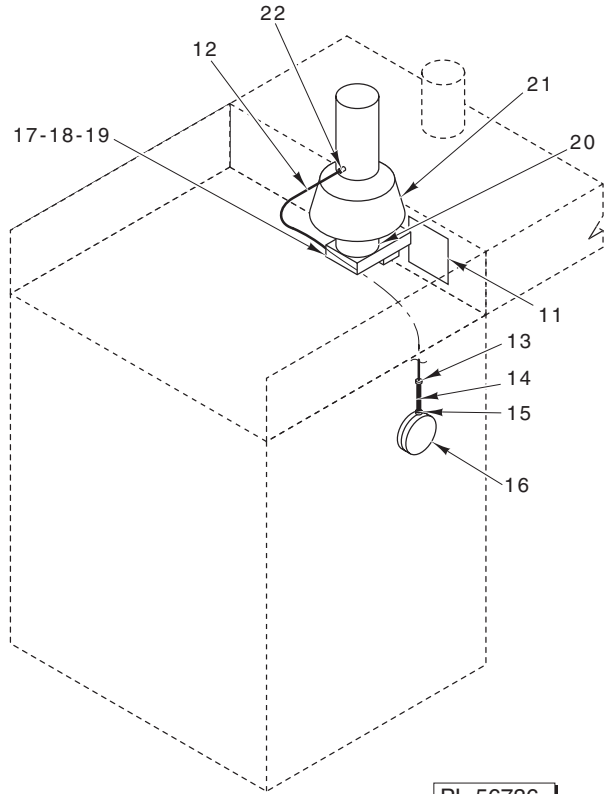
PL-56697

**GAS SUPPLY PLUMBING**

ILLUS.	PART NO.	NAME OF PART	AMT.
PL-56697			
1	01-1A1610-00002	Valve – Gas .....	1
2	01-100V17-00446	Pipe – Close 3/4 NPT .....	1
3	01-100V17-00470	Union 3/4 NPT BLK #150 .....	1
4	01-100V17-00446	Pipe – Close 3/4 NPT .....	1
5	01-100V17-00192	Elbow 90 Deg. 3/4 Rd. ....	1
6	01-100V17-00446	Pipe – Close 3/4 NPT .....	1
7	01-100V17-00169	Valve – Gas Cock 3/4 NPT .....	1
8	01-100V17-00446	Pipe – Close 3/4 NPT .....	1
9	01-100V17-00467	Bell Reducer 1 1/4 x 3/4 In. (Nat.) .....	1
10	01-10A982-02300	Pipe 3/4 In. Dia. ....	1
11	01-100V17-00451	Tee 3/4 NPT x 3/4 NPT .....	1
12	01-10A982-00400	Pipe 3/4 Dia. X 4 In. Lg. ....	1
13	01-100V17-00472	Cap – Pipe 3/4 .....	1
	01-1000V9-00156	Valve Kit – LP Conversion .....	1
	01-1M5116-00001	Gas Supply – Nat. ....	1
	01-1M5116-00002	Gas Supply – L.P. ....	1



SINGLE POINT VENT



DUAL POINT VENT

PL-56736

SINGLE- AND DUAL-POINT VENTING

**SINGLE- AND DUAL-POINT VENTING**

ILLUS. PL-56736	PART NO.	NAME OF PART	AMT.
1	01-100V17-00280	Fitting – Compression 1/8 In. NPT .....	1
2	01-100V17-00004	Tube – 1/4 In. O.D (Alum.) 10 Ft. ....	1
3	01-1000V1-00018	Clamp – Hose 1/4 I.D. x 7/16 O.D. ....	1
4	01-1A1023-00425	Tube – Black (Neoprene) .....	1
5	01-1000V1-00018	Clamp – Hose 1/4 I.D. x 7/16 O.D. ....	1
6	01-1000V6-00176	Switch – Pressure .....	1
7	01-1M5172-00001	Baffle Weldment – Exhaust .....	1
8	01-1M5162-00001	Bracket – Draft Inducer Hold Down .....	2
9	01-1M5161-00001	Inducer – Draft (300K) .....	1
10	01-1M5161-00002	Inducer – Draft (350K) .....	1
11	01-1M5165-00001	Cover – Hood Connection .....	1
12	01-100V17-00004	Tube – 1/4 In. O.D (Alum.) 10 Ft. ....	1
13	01-1000V1-00018	Clamp – Hose 1/4 I.D. x 7/16 O.D. ....	1
14	01-1A1023-00425	Tube – Black (Neoprene) .....	1
15	01-1000V1-00018	Clamp – Hose 1/4 I.D. x 7/16 O.D. ....	1
16	01-1000V6-00177	Switch – Pressure .....	1
17	01-1M5162-00001	Bracket – Draft Inducer Hold Down .....	2
18	01-1M5112-00001	Inducer – Draft (300K) .....	1
19	01-1M5112-00002	Inducer – Draft (350K) .....	1
20	01-1000V9-00164	Reducer – Galvanized 8 Ft. x 6 Ft. ....	1
21	01-1000V9-00153	Diverter – Draft .....	1
22	01-100V17-00280	Fitting – Compression 1/8 In. NPT .....	1

