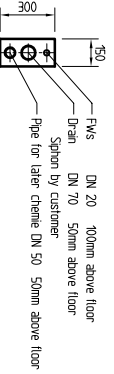
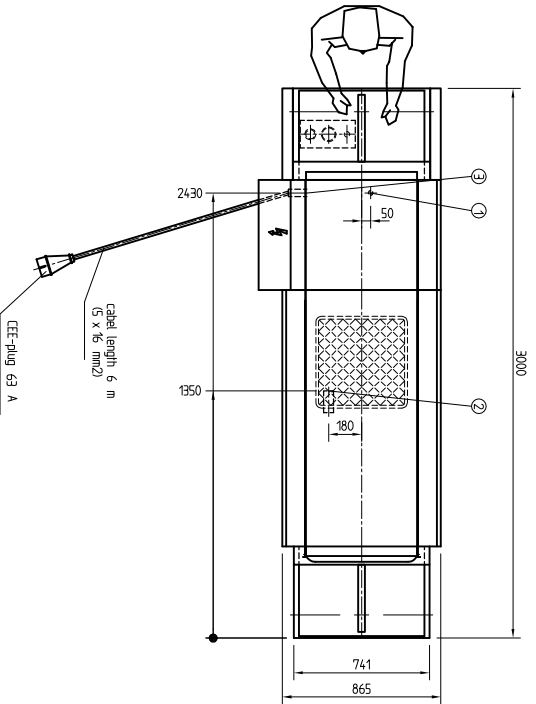


In case of direct outside vent,  
please arrange for frost protection.

**PLEASE NOTE**  
ALL REQUIRED SERVICE OPENINGS (FLOOR/WALL/CEILING SYSTEMS EXCEPT AWG) ARE HOBART RECOMMENDATIONS (NOT MANDATED).

As continued product improvement is a policy of Hobart, specifications are subject to change without notice.



<b>ELECTRICAL</b>	Electrical connection : 400 V / 50 Hz / 3 / PE 29.8kW	220 mm above floor
<b>RATING</b>	Class section : 3 + 40 ampere	
	: 5 + 10 mm <sup>2</sup>	

21	drip water - Siphon by customer	DN50	800 mm above floor
2	Tank drain - Siphon by customer	DN50	100 mm above floor
R 1	Fresh water connection 2"-8" Clark - max.60 °C - 250 l/h	DN20	155 mm above floor
S	flow pressure min. 2 bar		for tank fill = 125 l

HEATING: electric  
MAIN SWITCH: build in

TYPE: FX-C - Mobil - Rack Turning R/L

DAS UNTERBEREICHT AV DIESE ZEICHNUNG VERBODEN. JE DER HOBART CORPORATION ORDER ENGINER HERBYL DUTCH REPAIRS SERVICE CENTER, 2000 WILSON ROAD, DUBLIN, OHIO 43017, U.S.A. THIS DOCUMENT CONTAINS PROPRIETARY AND CONFIDENTIAL DATA OF HOBART CORPORATION OR ITS SUBSIDIARIES. NO DISCLOSURE, REPRODUCTION OR USE OF ANY PART THEREOF MAY BE MADE WITHOUT WRITTEN PERMISSION OF HOBART.

HOBART 6984 0301280X 4x20  
ROBERT BOSCH GERMANY  
TELEPHONE: 77656 OFFENBURG GERMANY  
TELEFAX: 0781/600-2319



PLAN  
 QUOTATION  
 ORDER

DRAWN BY: W.L.A. SCALE: 1:20 ORDER-NO.: DRAWING NO.: C-600-

REPLACES DRAWING NO.:  
REPLACED BY DRAWING NO.: