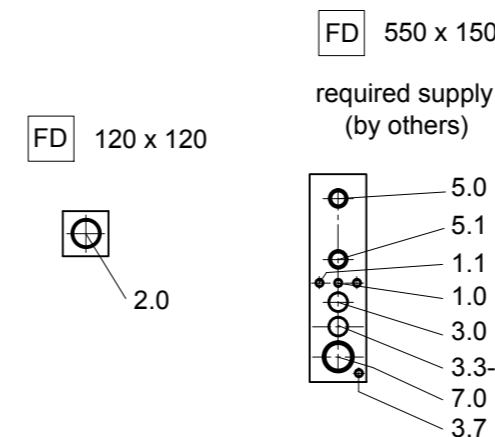
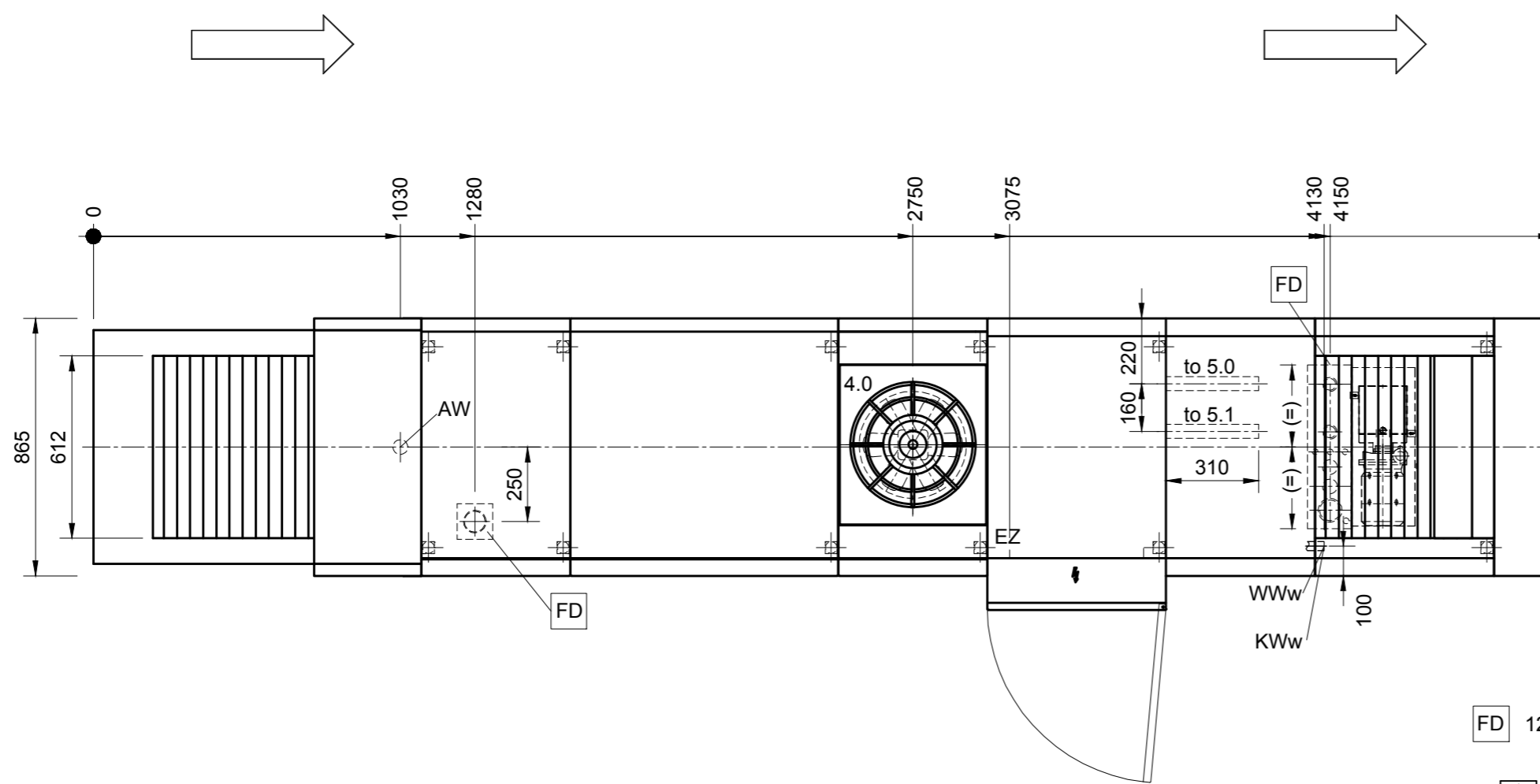
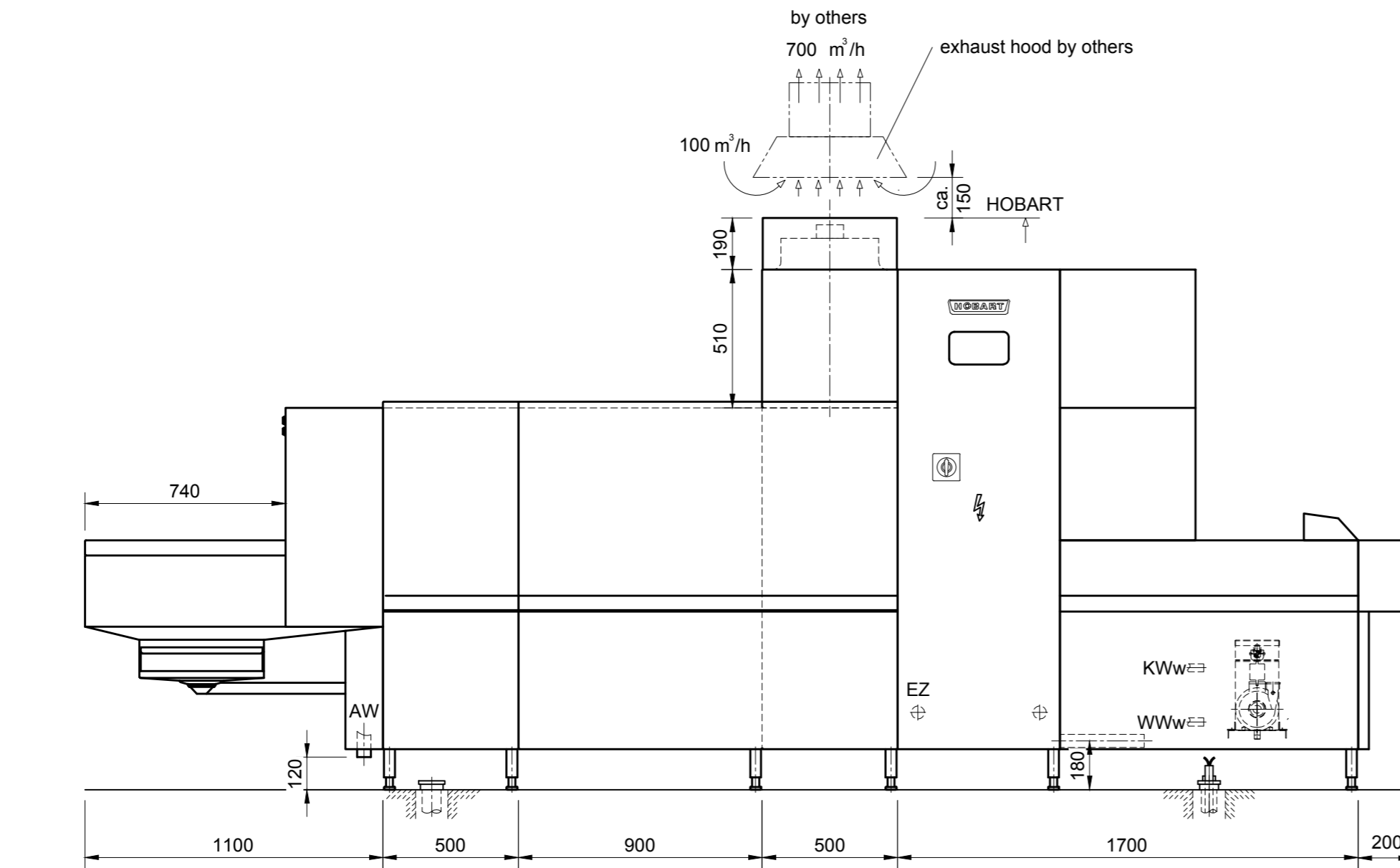
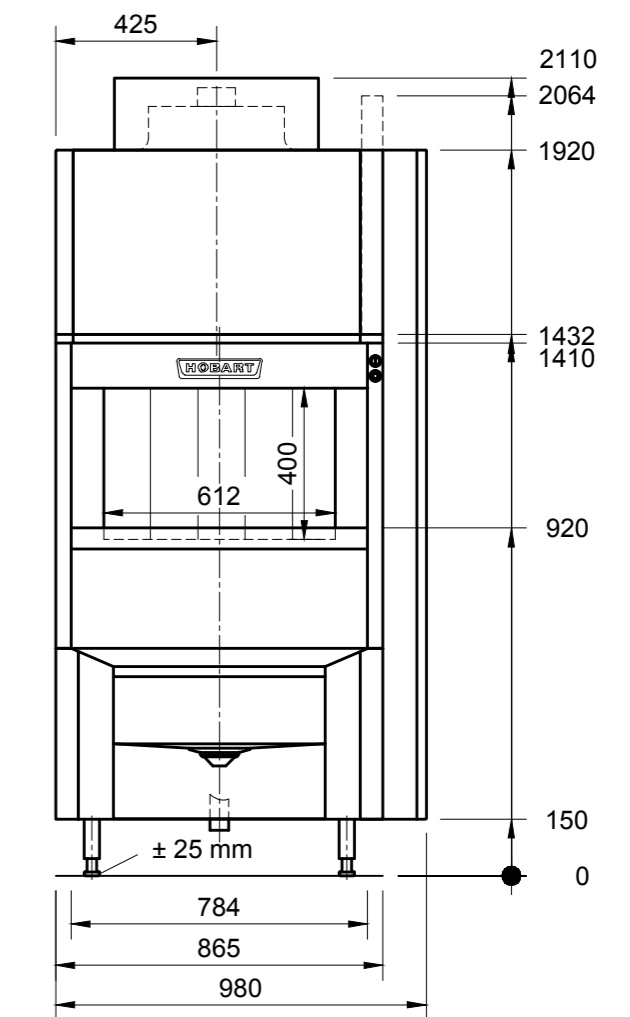


| | | |
|-----------------------------|------------------------------|------------------------------|
| AW = drain water (CNS) | KW = cold water | üOKFF = above finished floor |
| Dat = dataline | KWw = cold water soft | UK = lower edge |
| EZ = power line 230V / 400V | LR = conduit Ø | VEW = demineralized water |
| FD = floor opening | CNS = stainless steel (inox) | WD = wall opening |
| HW-VL = hot water flow | MK = supply channell | WS = wall slot |
| HW-RL = hot water return | PE = equipotential conductor | WW = warm water |
| KB = cored hole Ø | STL = control line | WWw = warm water soft |



Installation: All installations should always comply with all national and local codes of practice.
Exhaust: A frost-protection flap is recommended if the exhaust air from the machine is exterior ducted.
Transport: Minimum measurements of entry doors for machine assembly = outer measurements of largest machine + 300mm in height, + 400mm in width!
Aeration: The ventilation and exhaust for the room must be interpreted according to local by-laws.
Shut-off valves: The shut-off valves for rinsewater, tankfilling or demi-rinse are supplied by others.
Control- and datalines: We recommend a conduit for control-lines in the area of the electrical connection.
Washing result: A spotless cleaning results can be achieved only with low mineral content of the rinse water. We recommend a conductance of about 80µS/cm.
Floor drain: Splash floor drains should be provided for general cleaning purposes.
Steam- connections: The in-house steam-flow piping must be equipped with condensate drainage prior to the HOBART steam-connection. The in-house condensate piping must be pressure less and able to absorb all HOBART condensate.



| | | | |
|---|-----------------------------|--------------------------------------|-----------------------------|
| Machine-Type: Flight-Type Dishwasher | | Heating: Steam | |
| Model: PROFI FTN 2-E-A-DL3, C25 | | Operation: Left / Right | |
| Usable-Width: 612 | | Usable-Height: 400 | |
| | | Main-Switch: Built in Machine | |
| Chemical | conduit for chemical supply | Dimension | Position in mm |
| 7.0 | | Ø70 | 100mm AFFL |
| Heating | Consumption | Dimension | Connection |
| 5.1 | Condensate | Ø40 | G1 1/2" male |
| 5.0 | Steam | Ø40 | G1 1/2" male |
| 61,9 kg/h | | 129206 kJ/h | |
| Steam-Flow-Pressure provided by customer 0,5-1,0 bar / 7-14 psi | | | |
| Exhaust | Volume | Temp. | Humidity |
| 4.0 | 600 m³/h | 32°C | 90-98% |
| | | Pressure | Dimension |
| | | ca. 0 Pa | Ø300 internal |
| refer to drawing | | | |
| Electrical | Control and Data-Line | | Extended-Length |
| 3.7 | Equipotential | min. 1x6mm² provided by customer | |
| 3.5 | Malfunction-Sensor | 5x1,5 mm² | 3m reserve |
| 3.4 | Exhaust | 3x1,5 mm² | STL 3m reserve |
| 3.3 | Dosage-System | 7x1,5 mm² | STL 3m reserve |
| Electrical | Voltage | Frequency | Supply |
| 3.0 | 400 V | 50 HZ | 3-PE |
| | | Fuse | Cross-Section |
| | | 3x20 A | 4x2,5 mm² |
| | | Power | Extended-Length |
| | | 4,9 kW | 3m reserve |
| Water | Consumption | Temp. | Hardness |
| 2.0 | | Drain (Siphon provided by customer) | |
| 1.1 | WWw 159,5 l (Filling) | 50-60 °C | max. 8,75 clark (1,2mmol/l) |
| 1.0 | kWw 180 l/h | 12 °C | max. 3,75 clark (0,5mmol/l) |
| | | Conductance | Dimension |
| | | 150-400µS/cm | Ø20 |
| | | 80-120µS/cm | Ø20 |
| | | Connection | Position in mm |
| | | G3/4" male | 100mm AFFL |
| | | G3/4" male | 100mm AFFL |
| Water-Flow-Pressure provided by customer min. 1,5 bar / 22 psi | | | |
| Heat-Radiation (thermal output to the room) | | | |
| washware | 7,1 kW | latent | 2,0 kW |
| | | sensible | 3,9 kW |
| Index | Änderungen / Changes | Datum / Date | Name |

Das Urheberrecht an dieser Zeichnung verbleibt bei der HOBART GmbH.
 Jede nicht von uns schriftlich genehmigte Benutzung, Vervielfältigung, Überlassung an Dritte ist strafbar und macht schadensersatzpflichtig.
 This document contains proprietary and confidential data of HOBART GmbH. No disclosure, reproduction or use of any part thereof may be made without written permission of HOBART GmbH.

HOBART HOBART GmbH - Robert-Bosch-Straße17 - 77656 Offenburg, Germany
 Tel.: +49(0)781.600-0 - Fax.: +49(0)781.600-2319 - www.hobart.de

Angebot Quotation
 Bestellung Order

| | | | |
|---------------------------------------|--------------------------|------------|---------------------------------|
| Datum / Date: 02.11.2011 | Project: | | |
| Gezeichnet / Drawn by: R.Leonhardt | Maßstab / Scale: 1:20 | Order-No.: | Zeichnungsnummer / Drawing-No.: |
| Gepflichtet / Checked by: R.H. | | | FTN SF 6x4 2-E-A-DL3, C25 LR |
| Projectmanager: XXXX | | | |