



CATALOG OF REPLACEMENT PARTS

C-LINE A/AW DISHWASHER SUPPLEMENT

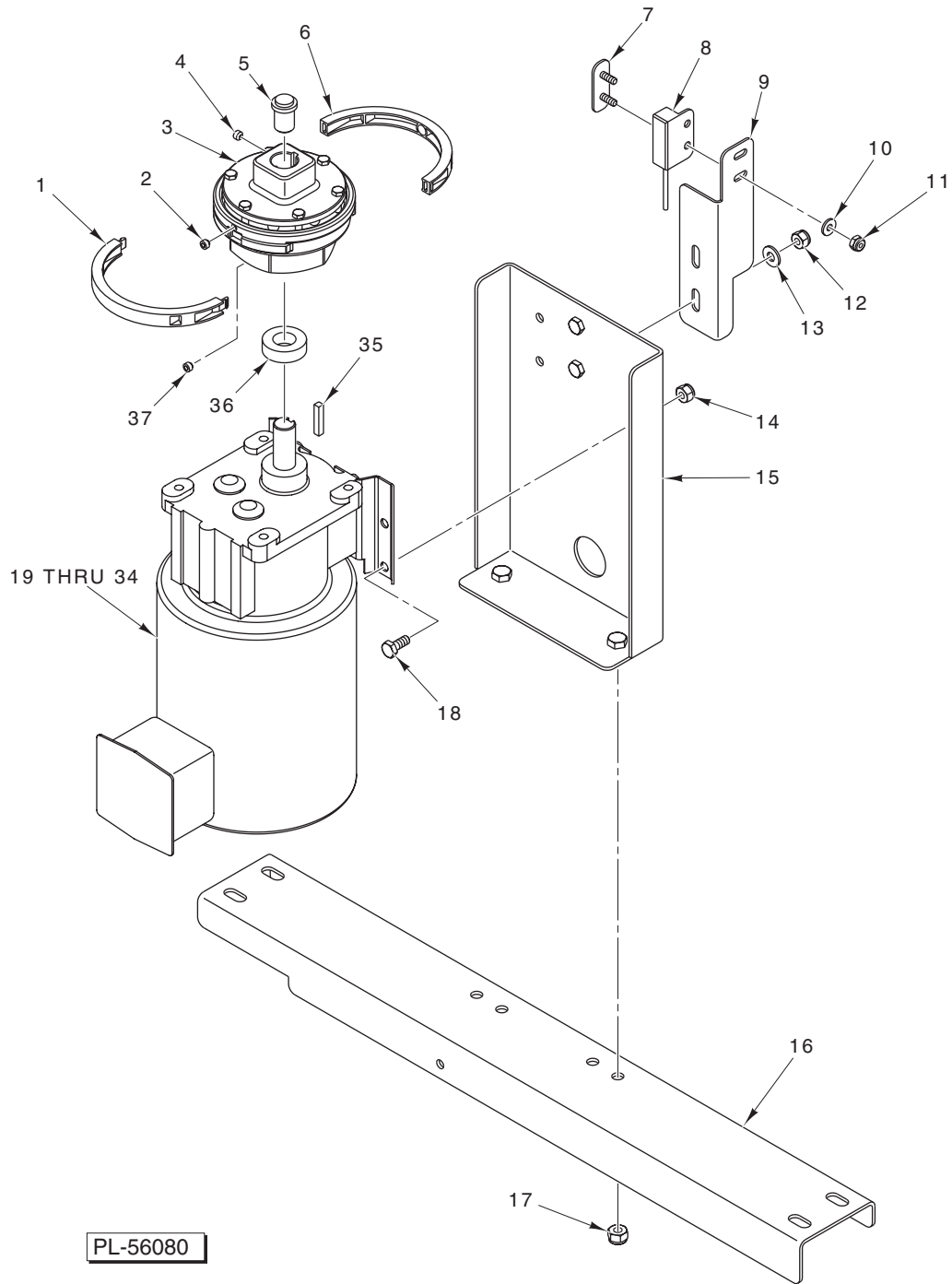
SECTION 1 (PAGES 2 THRU 11) CONVEYOR MOTOR/CLUTCH ASSEMBLY AND CONTROLS

This section contains replacement parts for machines built from S/N 851029805 and after.

SECTION 2 (PAGES 12 THRU 20) GAS HEAT ASSEMBLY

This section contains replacement parts for machines built from S/N 851033279 and after.

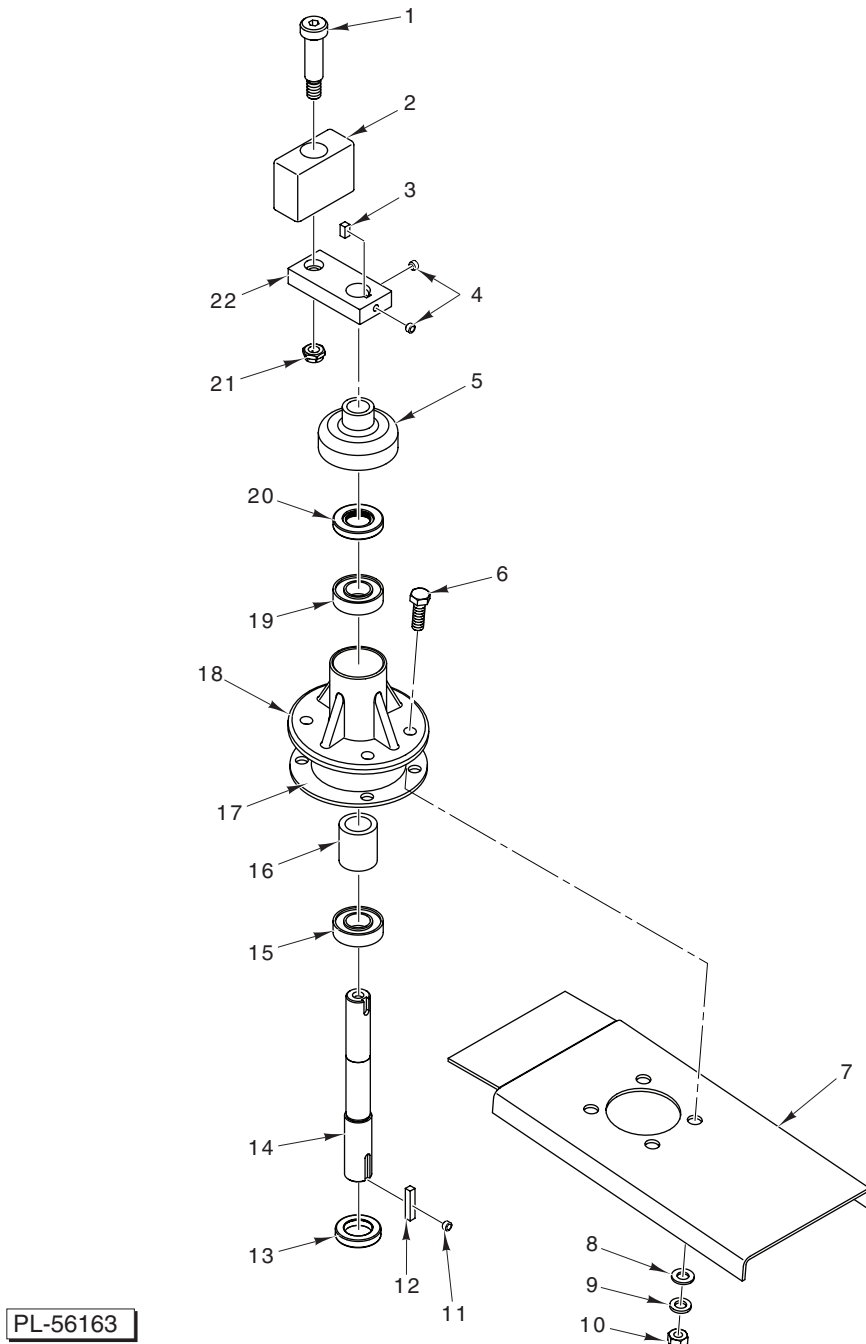
Supplement to C44A and C54A Series Dishwasher Replacement Parts Catalog Form 17820D, C64A Series Dishwasher Replacement Parts Catalog Form 18366A, and C88A Series Dishwasher Replacement Parts Catalog Form 18867.



CONVEYOR DRIVE MOTOR

CONVEYOR DRIVE MOTOR

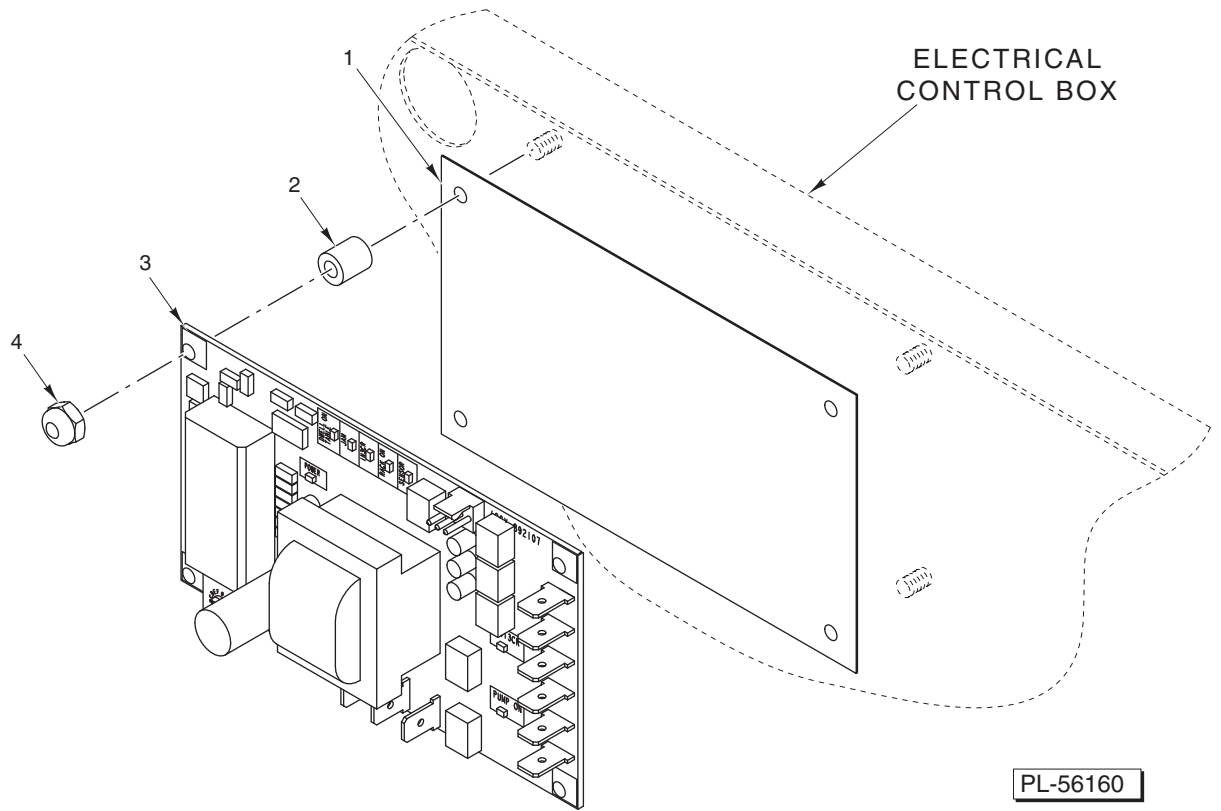
ILLUS.	PART NO.	NAME OF PART	AMT.
	PL-56080		
1	00-892024-00001	Ring – Magnet Assy. (Male)	1
2	SC-075-10	Set Screw $\frac{1}{4}$ -20 x $\frac{3}{16}$ Soc. Hdls., Cup Pt.	2
3	00-749500	Clutch – Detent Assy.	1
4	SC-075-10	Set Screw $\frac{1}{4}$ -20 x $\frac{3}{16}$ Soc. Hdls., Cup Pt.	2
5	00-749999	Plug – Clutch Keyway	1
6	00-892024-00002	Ring – Magnet Assy. (Female)	1
7	00-892570	Plate – Sensor Mounting	1
8	00-892533	Sensor – Latching Hall	1
9	00-892498	Bracket – Sensor	1
10	WS-019-20	Washer (SST)	2
11	NS-031-15	Stop Nut 10-24 Hex (SST)	2
12	NS-047-82	Stop Nut $\frac{1}{4}$ -20 Hex (SST)	2
13	WS-017-06	Washer	2
14	NS-047-82	Stop Nut $\frac{1}{4}$ -20 Hex (SST)	4
15	00-892163	Support – Motor Mounting	1
16	00-892162	Support – Motor	1
17	NS-036-19	Stop Nut $\frac{5}{16}$ -18 Hex (SST)	2
18	SC-041-01	Cap Screw $\frac{1}{4}$ -20 x $\frac{3}{4}$ Hex Hd. (SST)	4
19	00-437044-00001	Motor – Conveyor Drive (208-240/480 V., 60 Hz., 3 Ph.) (C44A Dishwashers)	1
20	00-437044-00002	Motor – Conveyor Drive (208-240 V., 60 Hz., 1 Ph.) (C44A Dishwashers)	1
21	00-437044-00003	Motor – Conveyor Drive (200-240 V., 50 Hz., 1 Ph.) (C44A Dishwashers)	1
22	00-437044-00004	Motor – Conveyor Drive (200-240/380-415 V., 50 Hz., 3 Ph.) (C44A Dishwashers)	1
23	00-328002-00001	Motor – Conveyor Drive (208-240/480 V., 60 Hz., 3 Ph.) (C44AW Dishwashers)	1
24	00-328002-00002	Motor – Conveyor Drive (208-240 V., 60 Hz., 1 Ph.) (C44AW Dishwashers)	1
25	00-328002-00003	Motor – Conveyor Drive (208-240 V., 50 Hz., 3 Ph.) (C44AW Dishwashers)	1
26	00-328002-00004	Motor – Conveyor Drive (208-240/380-415 V., 50 Hz., 3 Ph.) (C44AW Dishwashers)	1
27	00-437044-00006	Motor – Conveyor Drive (208-240/480 V., 60 Hz., 3 Ph.) (C54A & C64A Dishwashers)	1
28	00-437044-00007	Motor – Conveyor Drive (208-240 V., 60 Hz., 1 Ph.) (C54A & C64A Dishwashers)	1
29	00-437044-00008	Motor – Conveyor Drive (200-240 V., 50 Hz., 1 Ph.) (C54A & C64A Dishwashers)	1
30	00-437044-00009	Motor – Conveyor Drive (200-240/380-415 V., 50 Hz., 3 Ph.) (C54A & C64A Dishwashers)	1
31	00-437044-00011	Motor – Conveyor Drive (208-240/480 V., 60 Hz., 3 Ph.) (C88A Dishwashers)	1
32	00-437044-00012	Motor – Conveyor Drive (208-240 V., 60 Hz., 1 Ph.) (C88A Dishwashers)	1
33	00-437044-00013	Motor – Conveyor Drive (200-240 V., 50 Hz., 3 Ph.) (C88A Dishwashers)	1
34	00-437044-00014	Motor – Conveyor Drive (200-240/380-415 V., 50 Hz., 3 Ph.) (C88A Dishwashers)	1
35	00-274231-00057	Key $\frac{3}{16}$ x $\frac{3}{16}$ x $1\frac{1}{4}$	1
36	00-749829	Bushing – Thrust	1
37	SC-075-10	Set Screw $\frac{1}{4}$ -20 x $\frac{3}{16}$ Soc. Hdls., Cup Pt.	2



CONVEYOR MOTOR/CLUTCH ASSEMBLY

CONVEYOR MOTOR/CLUTCH ASSEMBLY

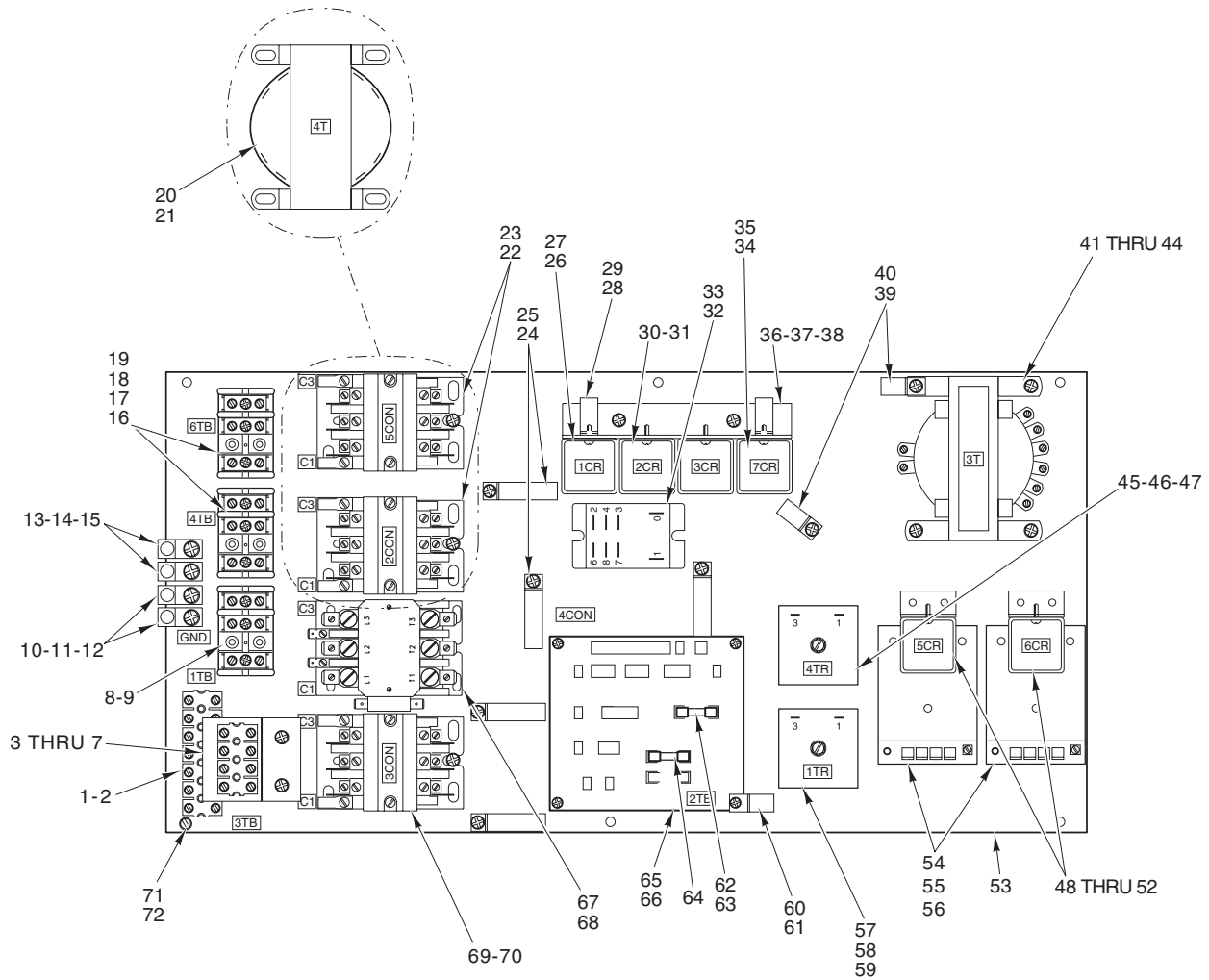
ILLUS.	PART NO.	NAME OF PART	AMT.
PL-56163			
1	SC-124-20	Shoulder Screw $\frac{3}{8}$ -16 ($\frac{1}{2}$ D x 1 $\frac{1}{2}$ L) Hex Hd. (SST)	1
2	00-474660	Slide – Drive Crank	1
3	00-012430-00039	Key	1
4	SC-050-01	Set Screw $\frac{1}{4}$ -20 x $\frac{1}{4}$ Sq. Hd., Cup Pt. (SST)	2
5	00-274748	Seal – Labyrinth	1
6	SC-041-13	Cap Screw $\frac{3}{16}$ -18 x 1 Hex Hd. (SST)	4
7	-	Bracket	1
8	WS-017-08	Washer	4
9	WL-006-23	Lockwasher $\frac{3}{16}$ Medium (SST)	4
10	NS-015-11	Nut $\frac{3}{16}$ -18 Hex	4
11	SC-075-10	Set Screw $\frac{1}{4}$ -20 x $\frac{3}{16}$ Soc. Hdls., Cup Pt.	1
12	00-012430-00093	Key $\frac{3}{16}$ x $\frac{3}{16}$ x 1	1
13	00-270939	Seal – Lower Housing	1
14	00-270937	Shaft – Crank	1
15	BB-021-19	Ball Bearing – Hoover NSK 6003	1
16	00-436879	Spacer – Bearing	1
17	00-270942	Gasket	1
18	00-270936	Housing – Bearing	1
19	BB-021-19	Ball Bearing – Hoover NSK 6003	1
20	00-270940	Seal – Upper Housing	1
21	NS-048-86	Lock Nut Special $\frac{3}{8}$ -16	1
22	00-749978	Arm – Crank	1
	00-274749	Housing Assy. (Incls. Items 5 & 11 thru 20)	1



C-LINE CLUTCH SUPPLEMENT

C-LINE CLUTCH SUPPLEMENT

ILLUS.	PART NO.	NAME OF PART	AMT.
PL-56160			
1	00-892102	Insulator - Control Board	1
2	00-118349-00003	Spacer - Control Panel	4
3	00-892107	Control Board - Clutch Assy.	1
4	NS-031-50	Stop Nut 6-32 Hex (SST)	4
	00-892235	Spacer - Nylon ⁵ / ₁₆ (Snap-In)	1

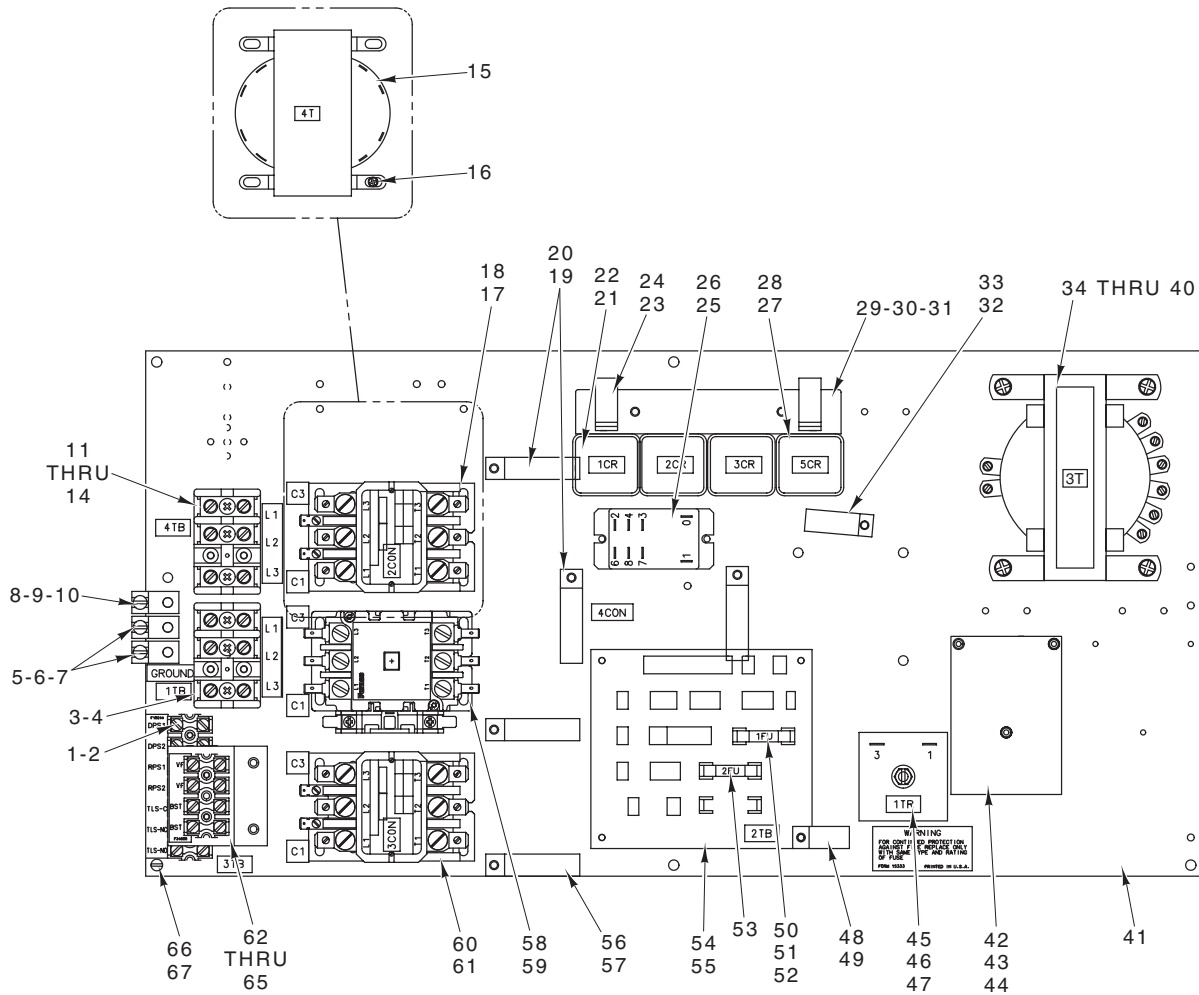


**COMPONENT PANEL
(C64A & C88A DISHWASHERS)
(120 V. PILOT CIRCUIT)**

ILLUS.	PART NO.	NAME OF PART	AMT.
PL-56162			
1	00-294325-013-5	Block – Terminal.....	1
2	SD-019-29	Self-Tapping Screw 6-20 x 1/2 Phil. Pan Hd., Type B	2
3	00-294325-013-4	Block – Terminal (Machines W/Vent Fan Control)	1
4	00-437101	Bracket – Vent Fan Control	1
5	SD-008-25	Self-Tapping Screw 10-16 x 1/2 Phil. Pan Hd., Type B	2
6	WL-014-07	Lockwasher #10 External Shakeproof (SST)	2
7	SD-019-29	Self-Tapping Screw 6-20 x 1/2 Phil. Pan Hd., Type B	2
8	00-294325-015-1	Block – Terminal.....	1
9	SD-037-21	Self-Tapping Screw 8-32 x 1 Phil. Fil. Hd., Type F	2
10	00-118544-00002	Lug – Grounding	2
11	SD-035-77	Self-Tapping Screw 1/4-20 x 3/8 Phil. Pan Hd., Type TT	2
12	WL-007-15	Lockwasher 1/4 External Shakeproof	2
13	00-118544-00002	Lug – Grounding (Electric Heat)	2
14	SD-035-77	Self-Tapping Screw 1/4-20 x 3/8 Phil. Pan Hd., Type TT	2
15	WL-007-15	Lockwasher 1/4 External Shakeproof	2
16	00-294325-015-1	Block – Terminal (200-240 V., 380-480 V., 3 Ph.) (Electric Heat)	2
17	00-294325-004-1	Block – Terminal (Not Shown) (200-240 V., 1 Ph.) (Electric Heat)	2
18	SD-037-21	Self-Tapping Screw 8-32 x 1 Phil. Fil. Hd., Type F (Use with Item 16)	4
19	SD-008-36	Self-Tapping Screw 8-18 x 7/8 Phil. Rd. Hd., Type B (Use with Item 17)	4

**COMPONENT PANEL
(C64A & C88A DISHWASHERS)
(120 V. PILOT CIRCUIT)**

ILLUS. PL-56162	PART NO.	NAME OF PART	AMT.
20	00-294500-026-1	Transformer (75 VA) (Gas Heat)	1
21	SD-008-25	Self-Tapping Screw 10-16 x 1/2 Phil. Pan Hd., Type B	4
22	00-087713-041-2	Contactactor (40 Amp.) (3 Pole) (Electric Heat)	2
23	SD-008-25	Self-Tapping Screw 10-16 x 1/2 Phil. Pan Hd., Type B	4
24	00-294677-00005	Clamp – Wire (1 1/2 I.D.)	5
25	SD-008-25	Self-Tapping Screw 10-16 x 1/2 Phil. Pan Hd., Type B	5
26	00-087714-020-2	Relay 3 P.D.T. (1CR, 3CR, & 4CR)	3
27	SD-019-29	Self-Tapping Screw 6-20 x 1/2 Phil. Pan Hd., Type B	6
28	00-294677-00004	Clamp – Wire (1 I.D.)	2
29	SD-008-25	Self-Tapping Screw 10-16 x 1/2 Phil. Pan Hd., Type B	5
30	00-087714-020-2	Relay 3 P.D.T. (115 V.)	1
31	SD-019-29	Self-Tapping Screw 6-20 x 1/2 Phil. Pan Hd., Type B	2
32	00-087714-046-1	Contactactor (Machines W/Vent Fan Control)	1
33	SD-008-18	Self-Tapping Screw 8-18 x 3/8 Phil. Bndg. Hd., Type B	2
34	00-087714-020-2	Relay 3 P.D.T. (7CR) (C88A Dishwashers)	1
35	SD-008-25	Self-Tapping Screw 10-16 x 1/2 Phil. Pan Hd., Type B	2
36	00-437103	Bracket	1
37	SD-008-25	Self-Tapping Screw 10-16 x 1/2 Phil. Pan Hd., Type B	2
38	WL-014-07	Lockwasher #10 External Shakeproof (SST)	2
39	00-294677-00004	Clamp – Wire (1 I.D.)	3
40	SD-008-25	Self-Tapping Screw 10-16 x 1/2 Phil. Pan Hd., Type B	3
41	00-294500-046-1	Transformer (150 VA) Pilot Control	1
42	00-294500-046-2	Transformer (300 VA) Pilot Control	1
43	SD-008-25	Self-Tapping Screw 10-16 x 1/2 Phil. Pan Hd., Type B	4
44	WL-014-07	Lockwasher #10 External Shakeproof (SST)	4
45	00-087714-031-2	Relay – Time Delay (C88A Dishwashers)	1
46	SD-036-13	Self-Tapping Screw 1/4-20 x 1 1/4 Slotted Hex Washer Hd., Type T	1
47	WL-007-15	Lockwasher 1/4 External Shakeproof	1
48	00-087714-020-2	Relay 3 P.D.T. (5CR & 6CR) (Gas Heat)	2
49	SD-019-29	Self-Tapping Screw 6-20 x 1/2 Phil. Pan Hd., Type B	4
50	00-437102	Bracket – Relay Mounting	2
51	SD-008-18	Self-Tapping Screw 10-16 x 3/8 Phil. Bndg. Hd., Type B	4
52	WL-014-05	Lockwasher #8 External Shakeproof	4
53	00-435508	Base Plate	1
54	00-475458-00001	Thermostat – Solid State (120 V.)	2
55	SD-038-02	Self-Tapping Screw 6-20 x 5/8 Phil. Pan Hd., Type B	2
56	00-476653	Spacer – Circuit Board	2
57	00-087714-031-2	Relay – Time Delay (5 Sec.)	1
58	SD-036-13	Self-Tapping Screw 1/4-20 x 1 1/4 Slotted Hex Washer Hd., Type T	1
59	WL-007-15	Lockwasher 1/4 External Shakeproof	1
60	00-294677-00003	Clamp – Wire	1
61	SD-019-31	Self-Tapping Screw 8-18 x 1/2 Phil. Pan Hd., Type B	1
62	FE-022-39	Fuse (1.5 Amp.) (250 V.) (60 Hz. Machines W/O Blower Dryer or Condenser)	1
63	FE-021-19	Fuse (3.2 Amp.) (250 V.) (50 Hz. & 50/60 Hz. Machines W/Blower Dryer &/or Condenser) ..	1
64	FE-023-80	Fuse (3.0 Amp.) (250 V.) (Gas Heat)	1
65	00-294676	PCB – Terminal & Fuse	1
66	SD-008-18	Self-Tapping Screw 8-18 x 3/8 Phil. Bndg. Hd., Type B	3
67	00-087713-018-2	Contactactor (W/Aux. Switch) (40 Amp.) (3 Pole)	1
68	SD-008-25	Self-Tapping Screw 10-16 x 1/2 Phil. Pan Hd., Type B	2
69	00-087713-040-2	Contactactor (40 Amp.) (3 Pole) (Machines W/Conveyor Dwell)	1
70	SD-008-25	Self-Tapping Screw 10-16 x 1/2 Phil. Pan Hd., Type B	2
71	SC-053-05	Mach. Screw 10-24 x 3/8 Slotted Truss Hd.	6
72	WL-007-12	Lockwasher #10 External Shakeproof	6



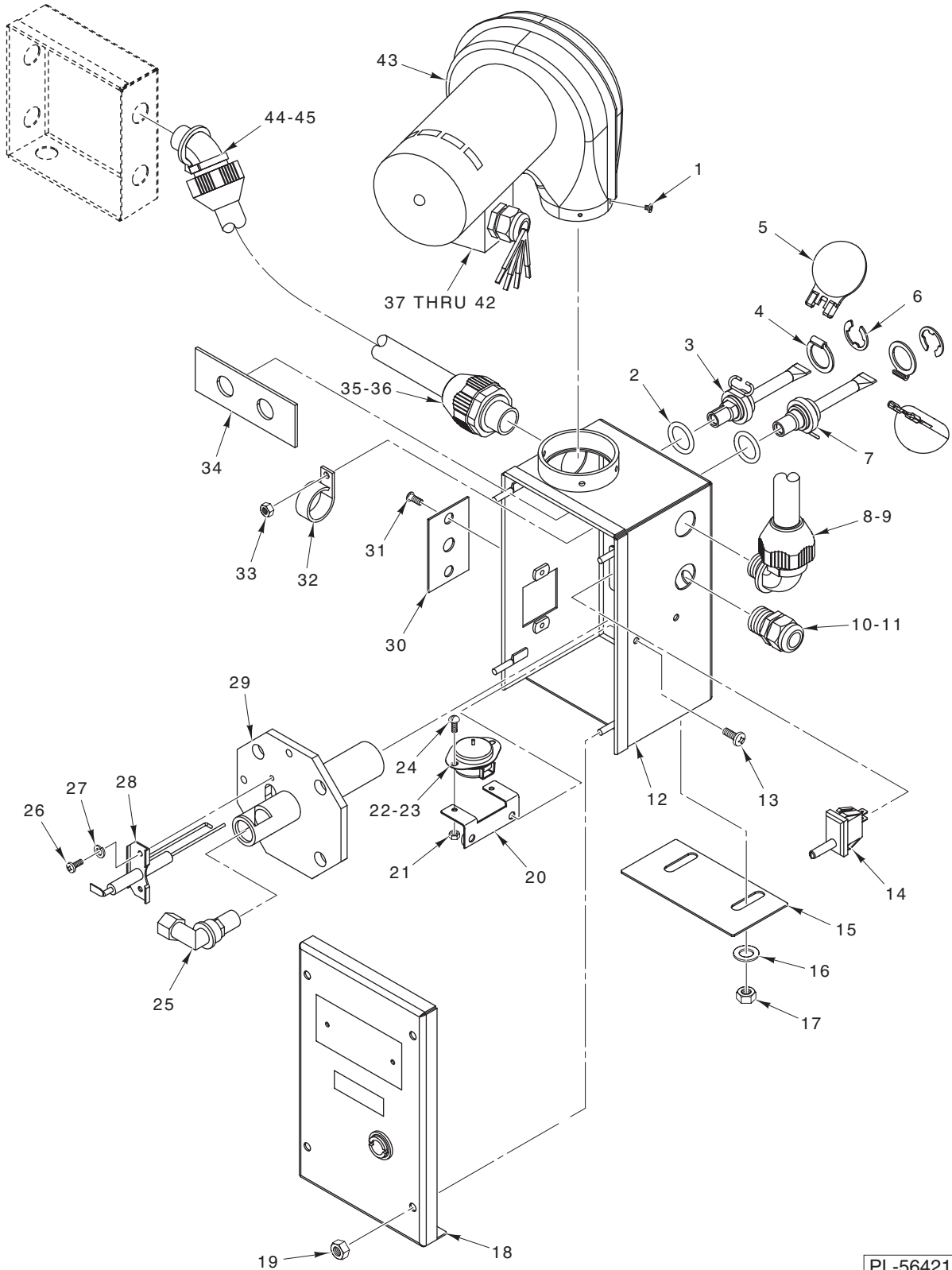
PL-56161

**COMPONENT PANEL
(C44A & C54A DISHWASHERS)
(120 V. PILOT CIRCUIT)**

ILLUS.	PART NO.	NAME OF PART	AMT.
PL-56161			
1	00-294325-013-5	Block – Terminal	1
2	SD-019-29	Self-Tapping Screw 6-20 x 1/2 Phil. Pan Hd., Type B	2
3	00-294325-015-1	Block – Terminal	2
4	SD-037-21	Self-Tapping Screw 8-32 x 1 Phil. Fil. Hd., Type F	2
5	00-118544-00002	Lug – Grounding	2
6	SD-035-77	Self-Tapping Screw 1/4-20 x 3/8 Phil. Fil. Pan Hd., Type TT	2
7	WL-007-15	Lockwasher 1/4 External Shakeproof	2
8	00-118544-00002	Lug – Grounding (Electric Heat)	1
9	SD-035-77	Self-Tapping Screw 1/4-20 x 3/8 Phil. Pan Hd., Type TT	1
10	WL-007-15	Lockwasher 1/4 External Shakeproof	1
11	00-294325-015-1	Block – Terminal (200-240 V., 380-480 V., 3 Ph. Electric Heat)	2
12	00-294325-004-1	Block – Terminal (Not Shown) (200-240 V., 1 Ph., Electric Heat) (S.P.E.C.)	2

**COMPONENT PANEL (CONT.)
(C44A & C54A DISHWASHERS)
(120 V. PILOT CIRCUIT)**

ILLUS. PL-56161	PART NO.	NAME OF PART	AMT.
13	SD-037-21	Self-Tapping Screw 8-32 x 1 Phil. Fil. Hd., Type F (Use with Item 11 on 3 Ph. Machines)	2
14	SD-008-36	Self-Tapping Screw 8-18 x 7/8 Phil. Rd. Hd., Type B (Use with Item 12 on 1 Ph. Machines)	2
15	00-294500-021-1	Transformer (24 & 120 V. Secondary) (Gas Heat)	1
16	SD-008-25	Self-Tapping Screw 10-16 x 1/2 Phil. Pan Hd., Type B	4
17	00-087713-041-2	Contactora (40 Amp., 3 Pole) (Electric Heat)	1
18	SD-008-25	Self-Tapping Screw 10-16 x 1/2 Phil. Pan Hd., Type B	2
19	00-294677-00005	Clamp – Wire (1 1/2 I.D.)	2
20	SD-008-25	Self-Tapping Screw 10-16 x 1/2 Phil. Pan Hd., Type B	2
21	00-087714-020-2	Relay 3 P.D.T. (1CR, 2CR, & 3CR)	4
22	SD-019-29	Self-Tapping Screw 6-20 x 1/2 Phil. Pan Hd., Type B	2
23	00-294677-00004	Clamp – Wire (1 I.D.)	2
24	SD-008-25	Self-Tapping Screw 10-16 x 1/2 Phil. Pan Hd., Type B	2
25	00-087714-046-1	Relay – 2 Pole (30 Amp.)	1
26	SD-008-18	Self-Tapping Screw 8-18 x 3/8 Phil. Bndg. Hd., Type B	2
27	00-087714-020-2	Relay 3 P.D.T. (5CR) (Gas Heat)	1
28	SD-019-29	Self-Tapping Screw 6-20 x 1/2 Phil. Pan Hd., Type B	2
29	00-437103	Bracket – Relay Mounting	1
30	SD-008-25	Self-Tapping Screw 10-16 x 1/2 Phil. Pan Hd., Type B	2
31	WL-014-07	Lockwasher #10 External Shakeproof (SST)	2
32	00-294677-00004	Clamp – Wire (1 I.D.)	1
33	SD-008-25	Self-Tapping Screw 10-16 x 1/2 Phil. Pan Hd., Type B	1
34	00-294500-046-1	Transformer (150 VA) Pilot Control	1
35	00-294500-046-2	Transformer (300 VA) Pilot Control	1
36	00-294500-046-3	Transformer (500 VA) Pilot Control	1
37	SD-008-25	Self-Tapping Screw 10-16 x 1/2 Phil. Pan Hd., Type B (Use W/Item 32 or 33)	4
38	WL-014-07	Lockwasher #10 External Shakeproof (SST) (Use W/Item 32 or 33)	4
39	SD-035-77	Self-Tapping Screw 1/4-20 x 3/8 Phil. Pan Hd., Type TT (Use W/Item 34)	4
40	WL-007-15	Lockwasher 1/4 External Shakeproof (Use W/Item 34)	4
41	00-435508	Base Plate	1
42	00-475458-00001	Board – Temperature Control Assy.	1
43	SD-038-02	Self-Tapping Screw 20 x 3/8 Phil. Pan Hd., Type B	3
44	00-476653	Spacer – Circuit Board	2
45	00-087714-031-2	Relay Time Delay (5 Sec.)	1
46	SD-036-13	Self-Tapping Screw 1/4-20 x 1 1/4 Hex Washer Hd., Type T	1
47	WL-007-15	Lockwasher 1/4 External Shakeproof	1
48	00-294677-00003	Clamp – Wire	1
49	SD-019-31	Self-Tapping Screw 8-18 x 1/2 Phil. Pan Hd., Type B	1
50	FE-022-39	Fuse (1.5 Amp.) (250 V.) (60 Hz. Machines W/O Blower Dryer or Condenser)	1
51	FE-021-19	Fuse (3.2 Amp.) (125 V.) (50 Hz. & 50/60 Hz. Machines W/Blower Dryer and/or Condenser)1	1
52	FE-023-25	Fuse (5 Amp.) (125 V.) (380-480 V. Gas Heat Machine W/O Blower Dryer or Condenser) ...	1
53	FE-023-80	Fuse (3 Amp.) (250 V.) (Use With Item 15)	1
54	00-294676	PCB – Terminal & Fuse	1
55	SD-008-18	Self-Tapping Screw 8-18 x 3/8 Phil. Bndg. Hd., Type B	3
56	00-294677-00005	Clamp – Wire (I.D.)	3
57	SD-008-25	Self-Tapping Screw 10-16 x 1/2 Phil. Pan Hd., Type B	3
58	00-087713-039-2	Contactora (30 Amp., 3 Pole W/Auxiliary Switch)	1
59	SD-008-25	Self-Tapping Screw 10-16 x 1/2 Phil. Pan Hd., Type B	2
60	00-087713-040-2	Contactora (40 Amp., 3 Pole Machines W/Conveyor Dwell)	1
61	SD-008-25	Self-Tapping Screw 10-16 x 1/2 Phil. Pan Hd., Type B	2
62	00-294325-013-4	Terminal – Block (Machines W/Vent Fan Control)	1
63	00-437101	Bracket – Vent Fan Control	1
64	SD-008-25	Self-Tapping Screw 10-16 x 1/2 Phil. Pan Hd., Type B	2
65	SD-019-29	Self-Tapping Screw 6-20 x 1/2 Phil. Pan Hd., Type B	2
66	SD-053-05	Mach. Screw 10-24 x 3/8 Truss Hd., Slotted	6
67	WL-007-12	Lockwasher #10 External Shakeproof	6

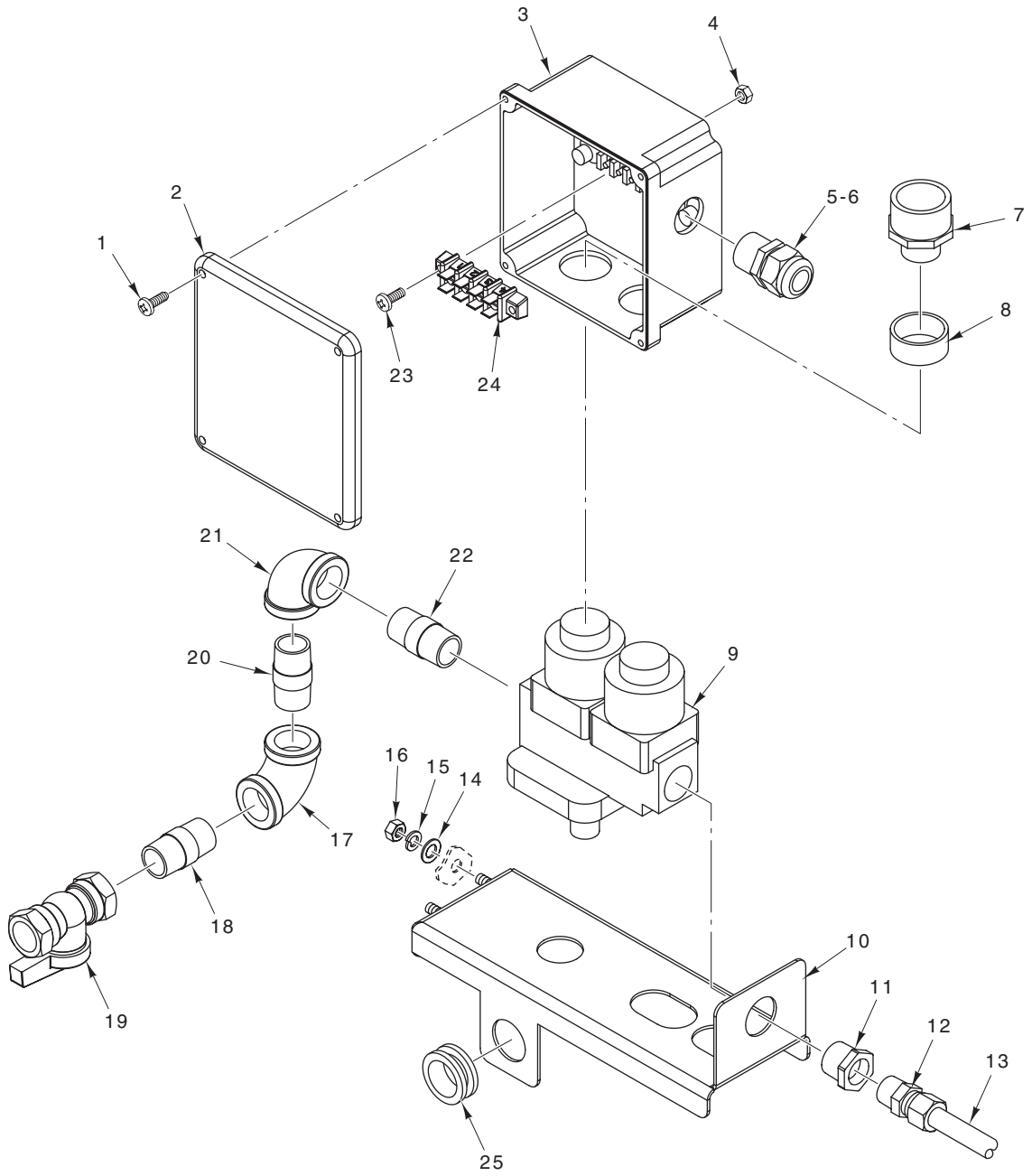


PL-56421

**BLOWER AND CONTROL BOX
(PER TANK)**

BLOWER AND CONTROL BOX (PER TANK)

ILLUS. PL-56421	PART NO.	NAME OF PART	AMT.
1	SC-008-18	Self-Tapping Screw 8-18 x ³ / ₈ Phil. Bndg. Hd., Type B	3
2	00-067500-00072	O-Ring	2
3	00-328495	Probe & Switch Assy. (2 Wire) (Water Level) (Incls. Items 4, 5, & 6)	1
4	00-112467	Retainer – Float	1
5	00-122674	Float Assy.	1
6	RR-010-13	Retaining Ring	1
7	00-186091	Probe & Switch Assy. (4 Wire) (Temperature & Water Level) (Incls. Items 4, 5, & 6)	1
8	FE-024-65	Connector – Conduit 1/2	1
9	00-436913-00010	Conduit – Liquidtite 1/2	1
10	FE-022-84	Strain Relief	1
11	FE-024-88	Lock Nut – Electrical 1/2	1
12	00-892678	Box – Gas Heat	1
13	SC-066-06	Mach. Screw 10-24 x 1/2 Phil. Truss Hd.	2
14	00-087711-00337	Switch – Plunger (Normally Open)	1
15	00-892689	Shutter – Air	1
16	WS-003-47	Washer	2
17	NS-031-21	Stop Nut 1/4-20 Special	2
18	00-892723-00001	Lid Assy. (Nat. Gas) (C44A & C54A)	1
19	NS-031-15	Stop Nut 10-24 Special	4
20	00-271122-00002	Bracket – Thermostat	1
21	NS-031-50	Stop Nut 6-32 Special	2
22	00-271123	Protector – High Limit	1
23	00-293946	Sleeve – Lead	1
24	SC-127-26	Mach. Screw 6-32 x ³ / ₈ Rd. Hd. (SST)	2
25	00-435701-00009	Angle – Fitting	1
26	SC-120-35	Mach. Screw 8-32 x ³ / ₈ Phil. Pan Hd.	2
27	WL-014-05	Lockwasher #8 External	2
28	00-436792	Electrode – Spar/Sense	1
29	00-892674	Burner	1
30	00-892682	Plate – Gas Line	1
31	SC-066-06	Mach. Screw 10-24 x 1/2 Truss Hd.	2
32	00-294677-00004	Clamp – Wire	1
33	NS-047-94	Lock Nut ³ / ₁₆ Stud	1
34	00-435960-00001	Plate – Spacer Float/Pobe	1
35	FE-024-58	Connector – Conduit ³ / ₄	1
36	00-436913-00018	Conduit – Liquidtite ³ / ₄	1
37	FE-006-18	Connector – Wire Nut 22-14	3
38	SC-125-42	Mach. Screw 8-32 x 1/2 Phil. Rd. Hd. (SST)	1
39	NS-031-08	Stop Nut 8-32 Special	1
40	WL-014-07	Lockwasher #10 External	2
41	FE-022-84	Strain Relief – Electrical	1
42	FE-024-88	Lock Nut 1/2 Electrical	1
43	00-892680	Blower	1
44	FE-024-62	Connector – Conduit ³ / ₄ (45 Deg.)	1
45	FE-007-25	Bushing – Reducing	2

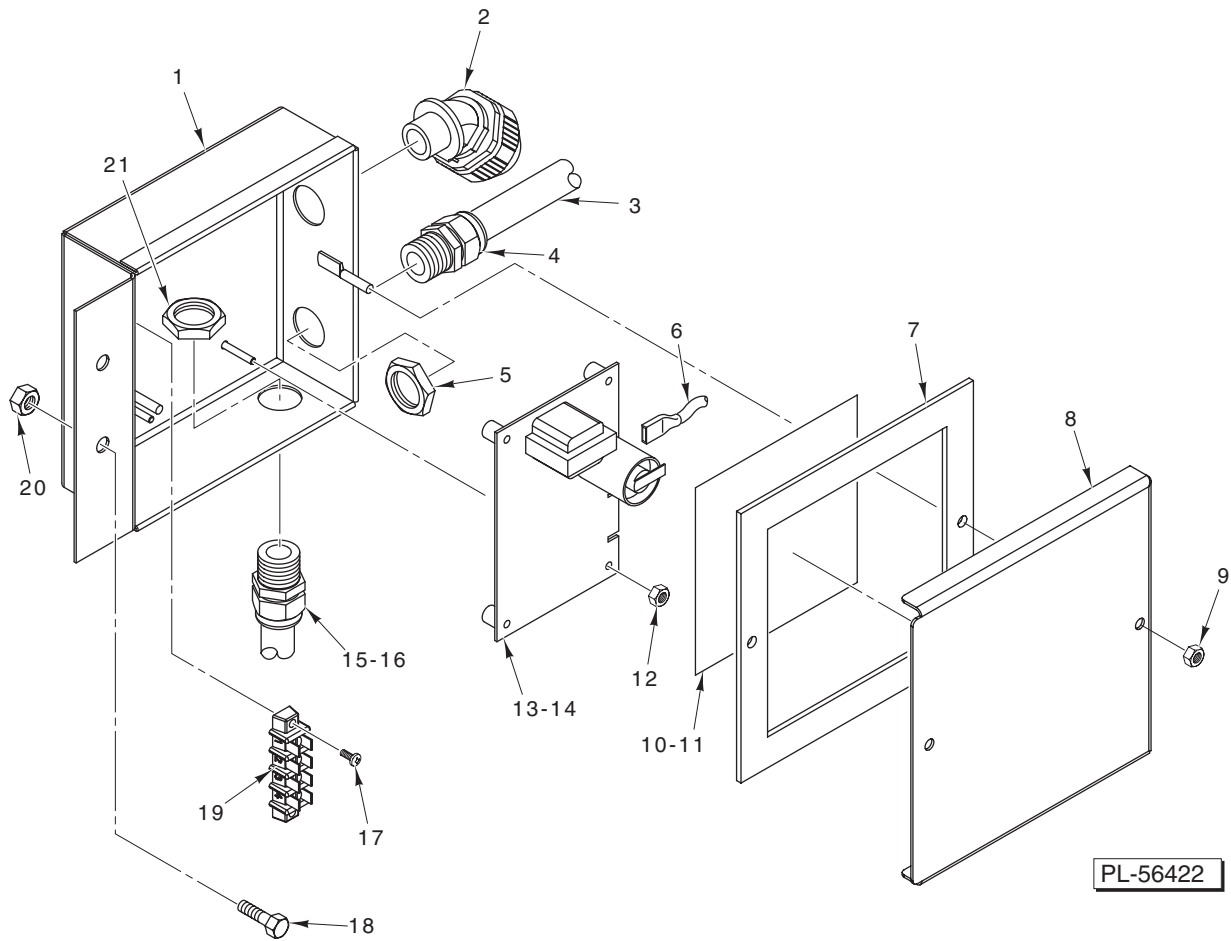


PL-56424

**GAS VALVE
(PER TANK)**

GAS VALVE (PER TANK)

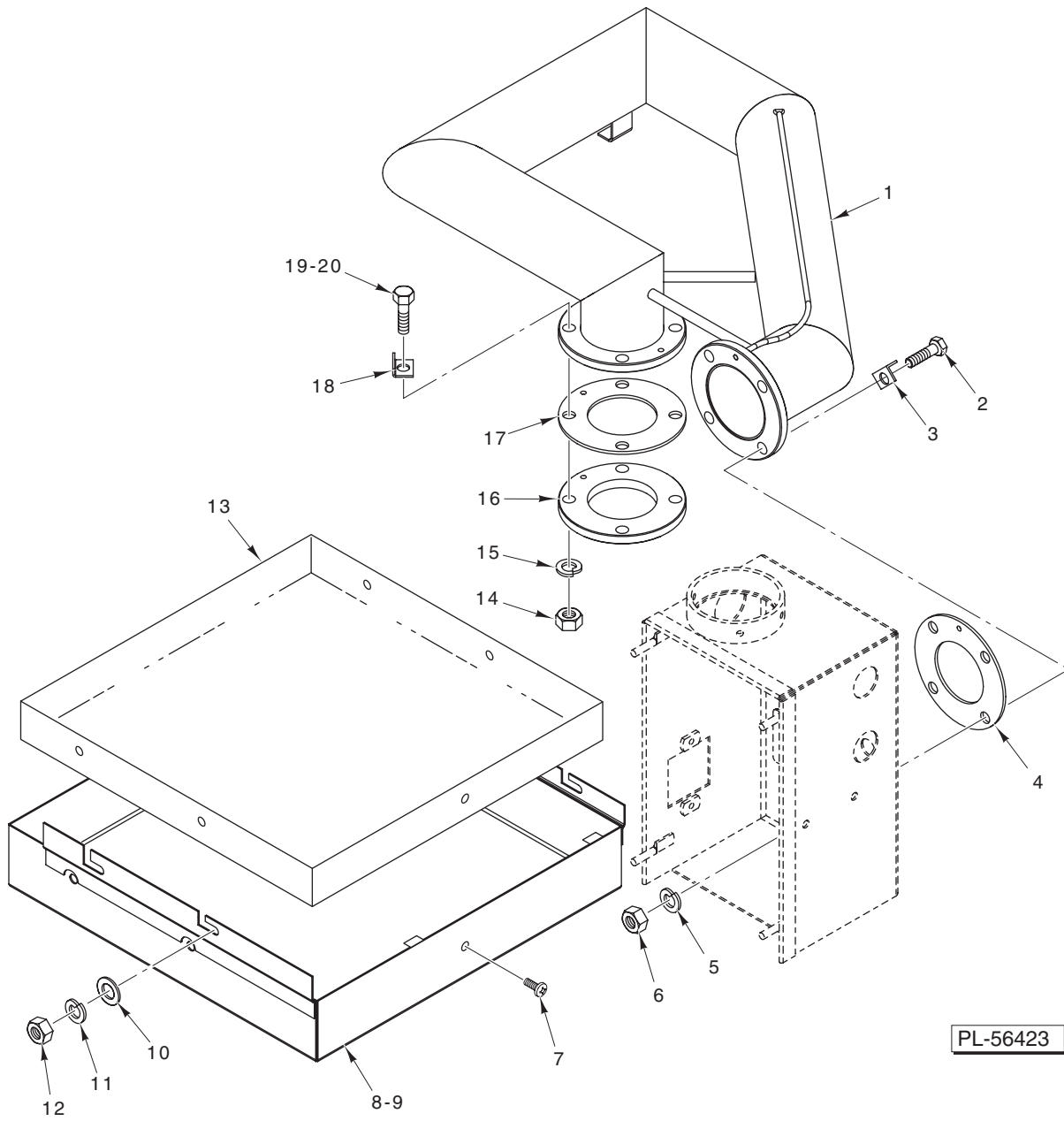
ILLUS. PL-56424	PART NO.	NAME OF PART	AMT.
1	SD-012-20	Self-Tapping Screw 8-32 x 1/2 Phil. Truss Hd., Type T	4
2	00-288465	Lid & Gasket Assy.	1
3	00-892690	Box – Gas Valve	1
4	NS-031-08	Stop Nut 8-32 Special	2
5	FE-022-84	Strain Relief	1
6	FE-024-88	Lock Nut 1/2 Plastic	2
7	00-892714	Adapter – 3/4 Slip x 1/2	2
8	00-892695	Spacer – Valve Box	2
9	00-328426-00001	Valve/Regulator – Gas	1
10	00-892681	Bracket – Valve/Regulator	1
11	FP-026-14	Bushing – Pipe 1/2 To 3/8	1
12	00-435702	Connector – Male 7/16	1
13	00-435836-00004	Tube – Aluminum 7/16	1
14	WS-003-47	Washer	2
15	WL-006-17	Lockwasher 1/4 Helical	2
16	NS-015-01	Nut 5/16-24 Hex (SST)	2
17	FP-013-15	Elbow – Pipe 1/2 x 90 Deg.	1
18	FP-067-04	Pipe 1/2 x 17/8	1
19	00-291988-00003	Valve – Gas Cock	1
20	FP-067-04	Pipe 1/2 x 17/8	1
21	FP-013-15	Elbow – Pipe 1/2 x 90 Deg.	1
22	FP-067-04	Pipe 1/2 x 17/8	1
23	SD-009-17	Self-Tapping Screw 8-32 x 5/8 Phil. Pan. Hd., Type F	2
24	00-294325-014-1	Block – Terminal	1
25	00-892820	Grommet	1
	00-546292	Sealer	AR



**IGNITION MODULE
(PER TANK)**

**IGNITION MODULE
(PER TANK)**

ILLUS. PL-56422	PART NO.	NAME OF PART	AMT.
1	00-892686	Box – Ignition Module	1
2	FE-024-61	Connector – Conduit 1/2 (45 Deg.)	1
3	00-892709-00003	Cable Assy.	1
4	FE-022-84	Strain Relief	1
5	FE-024-88	Lock Nut 1/2 (Plastic)	1
6	00-271146-00002	Cable – High Voltage	1
7	00-892687	Gasket – Control Box	1
8	00-892684	Lid – Ignitor Control Box	1
9	NS-031-15	Stop Nut 10-24 Hex (SST)	2
10	00-892696	Barrier – Mylar Module Box	1
11	0F-034775	Label – Ignitor Box	1
12	NS-031-50	Stop Nut 6-32 Special	4
13	00-892698	Board – Direct Spark Ignition	1
14	00-435538	Harness – Ignitor Board	1
15	FE-022-84	Strain Relief	1
16	00-892709-00002	Cable Assy.	1
17	SC-125-42	Mach. Screw 8-32 x 1/2 Phil. Rd. Hd. (SST)	2
18	SC-041-12	Cap Screw 5/16-18 x 7/8 Hex Hd. (SST)	2
19	00-294325-014-1	Block – Terminal	1
20	NS-031-29	Stop Nut 5/16-18 (SST)	2
21	FE-024-88	Lock Nut 1/2 (Plastic)	1



**IMMERSION TUBE
(PER TANK)**

**IMMERSION TUBE
(PER TANK)**

ILLUS.	PART NO.	NAME OF PART	AMT.
PL-56423			
1	00-892574	Tube – Immersion 3 In.	1
2	SC-041-40	Cap Screw $\frac{7}{16}$ -14 x 1 $\frac{1}{2}$ Hex Hd. (SST)	4
3	00-892710	Stop – Hex Hd.	4
4	00-436100	Gasket – Immersion Tube	1
5	WL-019-77	Lockwasher $\frac{7}{16}$ Helical (SST)	4
6	NS-047-97	Hex Nut $\frac{7}{16}$ -14 (SST)	4
7	SC-066-06	Mach. Screw 10-24 x $\frac{1}{2}$ Phil. Truss Hd. (SST)	5
8	00-892693	Shroud – Bottom	1
9	00-274520	Insulation	1
10	WS-017-06	Washer	4
11	WL-006-17	Lockwasher $\frac{1}{4}$ Helical	4
12	NS-015-01	Hex Nut $\frac{1}{4}$ -20 (SST)	4
13	00-274498-00001	Liner – Shroud	1
14	NS-047-97	Hex Nut $\frac{7}{16}$ -14 (SST)	4
15	WL-019-77	Lockwasher $\frac{7}{16}$	4
16	00-435952	Flange – Immersion Tube	1
17	00-436100	Gasket – Immersion Tube	1
18	00-892710	Stop – Hex Hd.	4
19	SC-041-40	Cap Screw $\frac{7}{16}$ -14 x 1 $\frac{1}{2}$ Hex Hd. (SST)	4
20	00-545595	Sealer – Bolt	AR

