

AM3 DISHWASHERS PARTS MANUAL



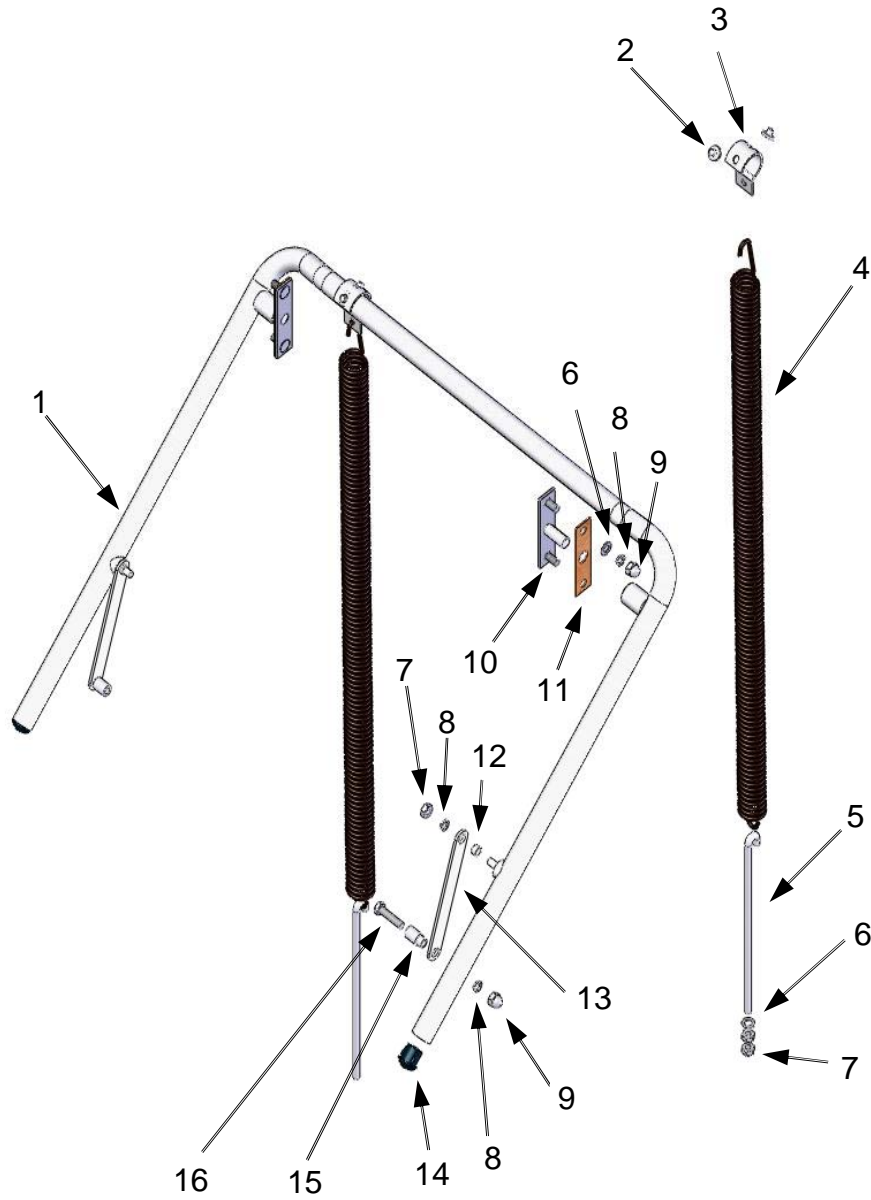
HOBART FOOD EQUIPMENT CO.,LTD

FORM 7153072E
Version 1.2 0810

CONTENT

| | |
|------------------------------|----|
| DOOR LIFT..... | 1 |
| WASH CHAMBER..... | 3 |
| FRAME..... | 5 |
| WASH SYSTEM..... | 7 |
| TANK..... | 9 |
| WATER INLET..... | 11 |
| WATER INLET(NO BOOSTER)..... | 13 |
| PANEL..... | 15 |
| CONTROL BOX..... | 17 |

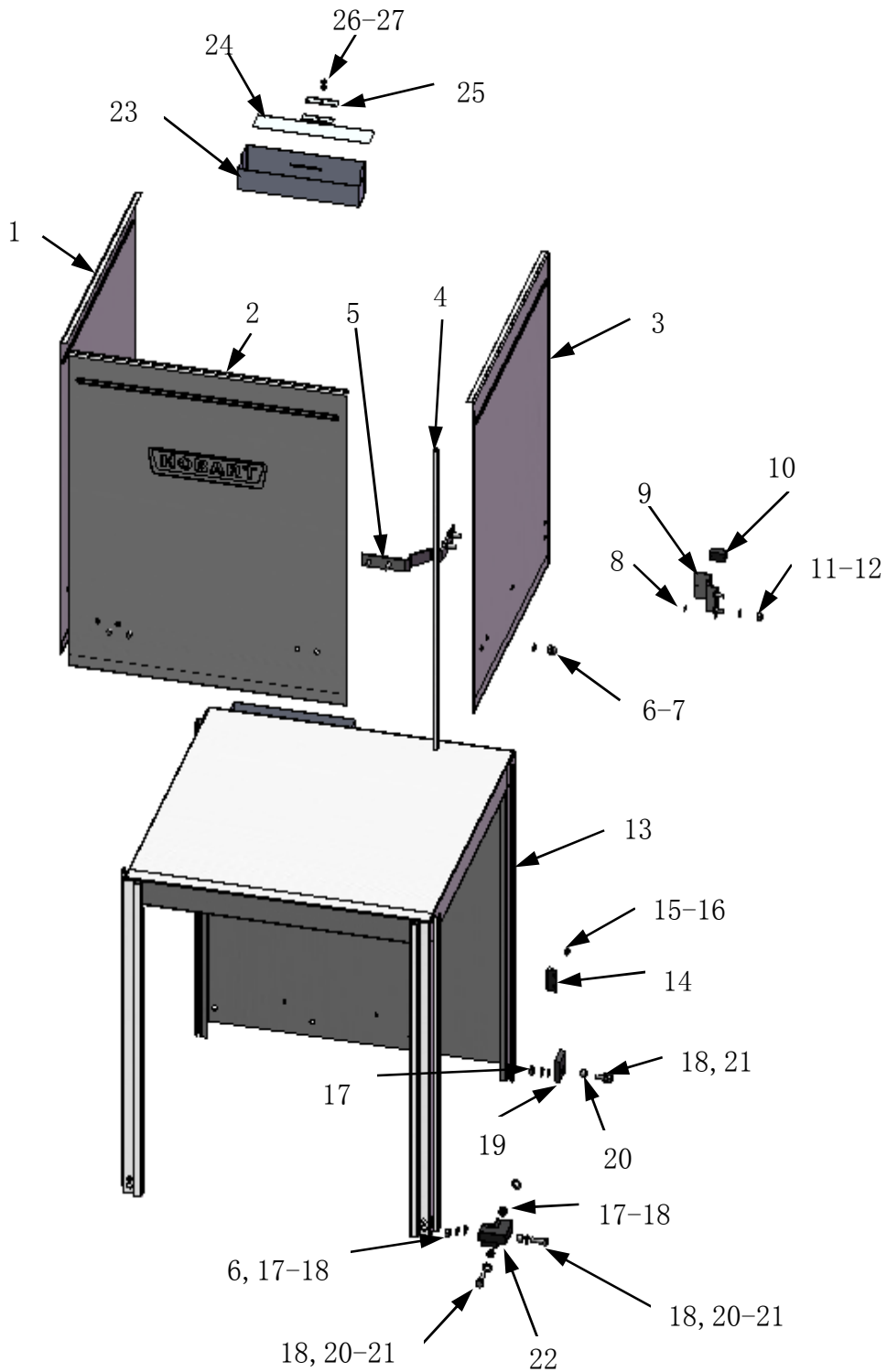
DOOR LIFT



DOOR LIFT

| | PART NO. | NAME OF PART | AMT. |
|----|-----------------|----------------------------|-------------|
| 1 | 743251 | Door Lift Assy | 1 |
| 2 | 119055 | Button-Bearing | 4 |
| 3 | 79008 | Hanger-Spring | 2 |
| 4 | 743258 | Spring | 2 |
| 5 | 743282 | Hook-Spring | 2 |
| 6 | WS-M8 | Washer M8 | 34 |
| 7 | NS-M8 | Nut M8 | 20 |
| 8 | WL-M8 | Lock Washer M8 | 24 |
| 9 | NC-M8 | Nut M8 Crown | 14 |
| 10 | 743268 | Bearing Bracket & Pin Assy | 2 |
| 11 | 473432 | Gasket-Door Lift | 2 |
| 12 | 74068 | Spacer-Door | 2 |
| 13 | 119011 | Link-Door | 2 |
| 14 | 474831 | Plug-Handle | 2 |
| 15 | 119046 | Pin-Door Lift | 2 |
| 16 | SCH-M8-35 | Bolt M8x35 | 2 |

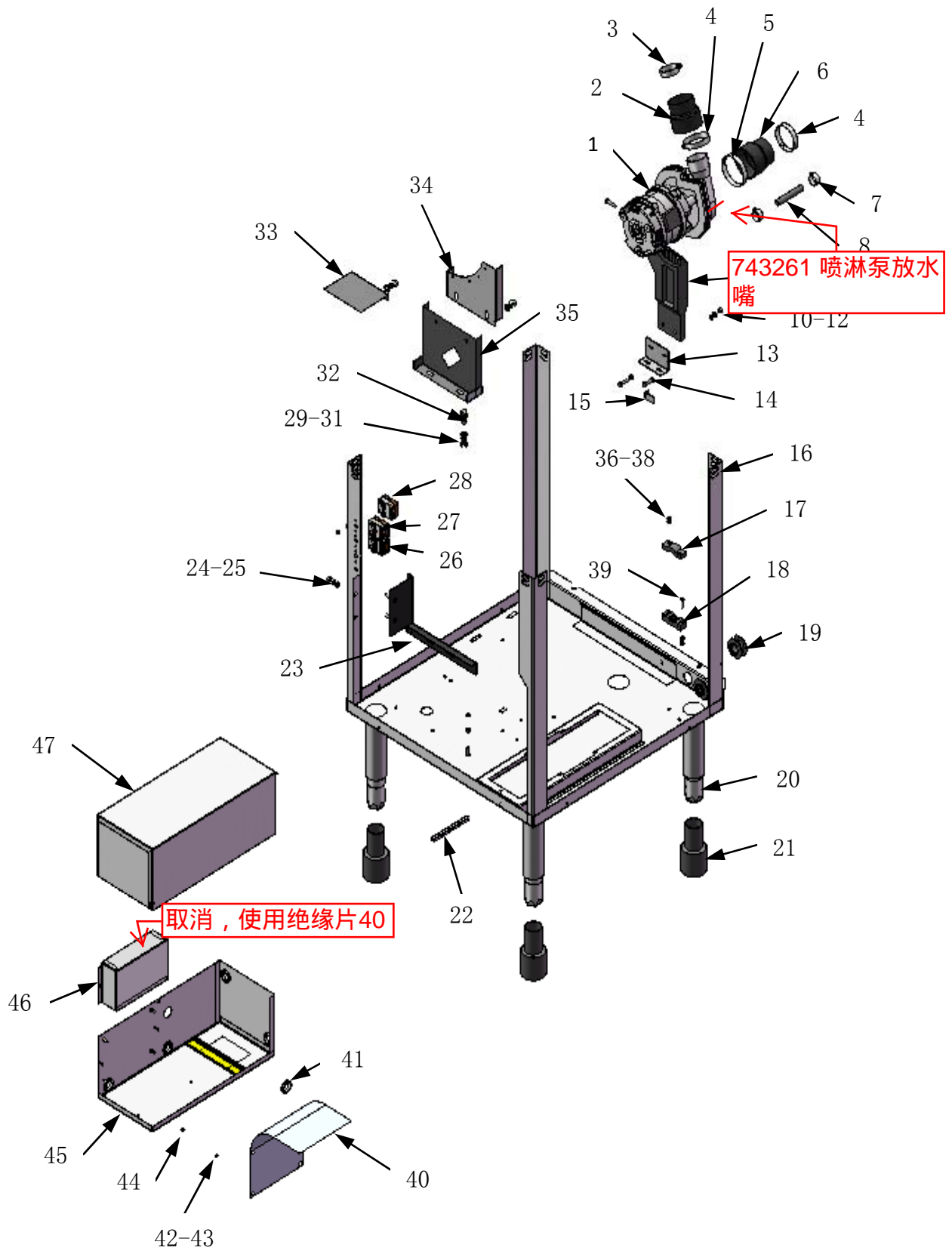
WASH CHAMBER AND DOORS



WASH CHAMBER AND DOORS

| | PART NO. | NAME OF PART | AMT. |
|----|-----------------|---------------------------|-------------|
| 1 | 743256 | Door-left | 1 |
| 2 | 743250 | Door-Front | 1 |
| 3 | 743257 | Door-Right | 1 |
| 4 | 112378-23 | Guide_Door | 7 |
| 5 | 743305 | Bracket-Door Lift | 2 |
| 6 | WL-M8 | Lock washer M8 | 24 |
| 7 | NC-M8 | Nut M8 Crown | 14 |
| 8 | SDT-M3-12 | Bolt-Self Screw M3x12 | 9 |
| 9 | 743368 | Bracket-Magnet | 1 |
| 10 | 743269 | Magnet | 1 |
| 11 | WL-M6 | Lock Washer 6 | 12 |
| 12 | NS-M6 | Nut M6 | 20 |
| 13 | 743252 | Chamber | 1 |
| 14 | 743271 | Reed Switch-Door | 1 |
| 15 | WS-M3 | washer 3 | 2 |
| 16 | NS-M3 | Nut M3 | 2 |
| 17 | NS-M8 | Nut M8 | 20 |
| 18 | WS-M8 | washer 8 | 34 |
| 19 | 743316 | Insert-Tank Corner(Rear) | 2 |
| 20 | 743306 | Space-Tank&chamber | 6 |
| 21 | SCH-M8-25 | Bolt M8x25 | 10 |
| 22 | 743307 | Insert-Tank Corner(Front) | 2 |
| 23 | 743382 | Air Scoop | 1 |
| 24 | 743382-3 | Enclosure panel | 1 |
| 25 | 743382-4 | Weight Stack | 2 |
| 26 | SCT-M5-10 | Screw M5*10 | 1 |
| 27 | NL-M5 | Nut M5 | 1 |

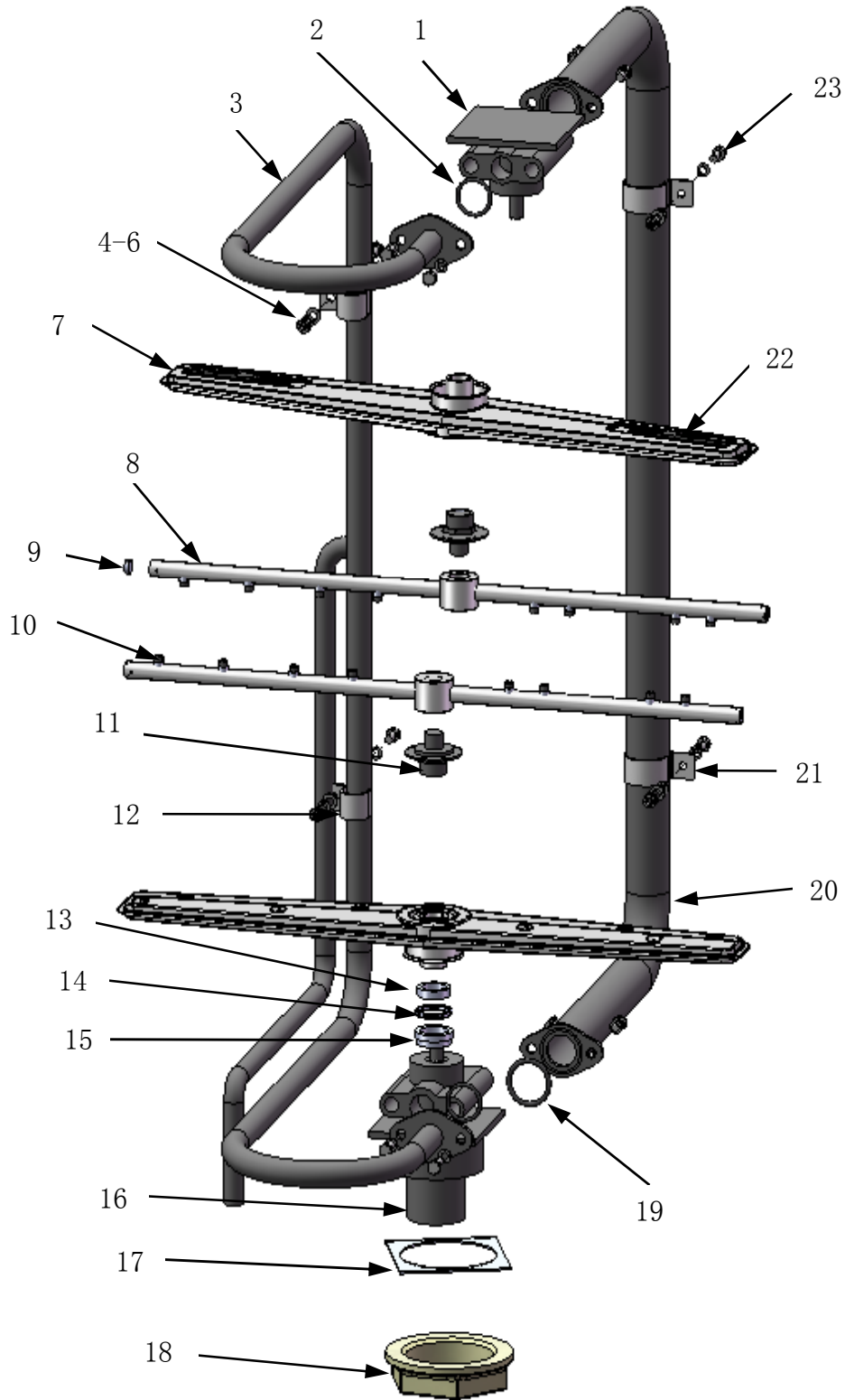
FRAME



FRAME

| | PART NO. | NAME OF PART | AMT. |
|----|-----------------|---------------------------------------|-------------|
| 1 | 743388 | 1.1KW Wash Pump(For380/50/3 220/50/3) | 1 |
| | 743388-1 | 1.1KW Wash Pump(For200/50/3) | |
| | 743388-2 | 1.1KW Wash Pump(For200/60/3 220/60/3) | |
| | 7433883 | 1.1KW Wash Pump(For220/60/1) | |
| 2 | 743317 | Elbow Pipe- Wash Pump Outlet | 1 |
| 3 | 538412 | clamp-50 | 3 |
| 4 | 542337 | clamp-60 | 2 |
| 5 | 743315-1 | clamp-75 | 1 |
| 6 | 743396 | Hose Adapter- Wash Pump Inlet | 1 |
| 7 | 743336 | clamp-14 | 2 |
| 8 | 743397 | Piping- Wash Pump Drain | 1 |
| 9 | 743389-1 | motor bracket (For native pump) | 1 |
| 10 | NS-M6 | Nut M6 | 55 |
| 11 | WL-M6 | Lock washerM6 | 54 |
| 12 | WS-M6 | Washer M6 | 75 |
| 13 | 743389-2 | motor anchorage (For native pump) | 1 |
| 14 | SCH-M6-25 | Bolt M6x25 | 3 |
| 15 | 743389-3 | support plate (For native pump) | 1 |
| 16 | 743254 | Frame | 1 |
| 17 | 743427-2 | Power Line Fixed Cover | 1 |
| 18 | 743427-1 | Wire Mount | 1 |
| 19 | 743427-3 | Bush-PowerLine | 2 |
| 20 | 743255 | Foot 2" | 4 |
| 21 | 74347 | Extended Leg | 4 (option) |
| 22 | 112378-23 | Guide bar | 4 |
| 23 | 743386 | Mounting Bracket- Booster | 1 |
| 24 | SCT-M4-6 | Screw M4x6 | 6 |
| 25 | WS-M4 | Washer 4 | 6 |
| 26 | 7112001 | Thermostat 86 °C | 1 |
| 27 | 743310 | Thermostat 70 °C | 1 |
| 28 | 743310-1 | Thermostat 82 °C | 1 |
| 29 | NS-M8 | Nut M8 | 20 |
| 30 | WL-M8 | Lock Washer 8 | 28 |
| 31 | WS-M8 | Washer 8 | 44 |
| 32 | SCH-M8-25 | Bolt M8X25 | 12 |
| 33 | 743398-1 | baffleplate-Inlet Valve | 1 |
| 34 | 743398 | Mounting Plate- Wash Pump | 1 |
| 35 | 743389 | Mounting Bracket- Wash Pump | 1 |
| 36 | NS-M5 | Nut M5 | 6 |
| 37 | WL-M5 | Lock washer 5 | 6 |
| 38 | WS-M5 | Washer 5 | 6 |
| 39 | ST-M5x15 | Screw M5x15 | 2 |
| 40 | 743370-1 | Plate- Insulation | 1 |
| 41 | 15260151 | Ring- Rubber | 7 |
| 42 | | washer | 4 |
| 43 | NS-M4 | Nut M4 | 4 |
| 44 | 743374 | Supporter- Control Board | 4 |
| 45 | 743366 | Control Box | 1 |
| 46 | 743370 | Hood- Control Board | 1 |
| 47 | 743365 | Cover- Control Board | 1 |

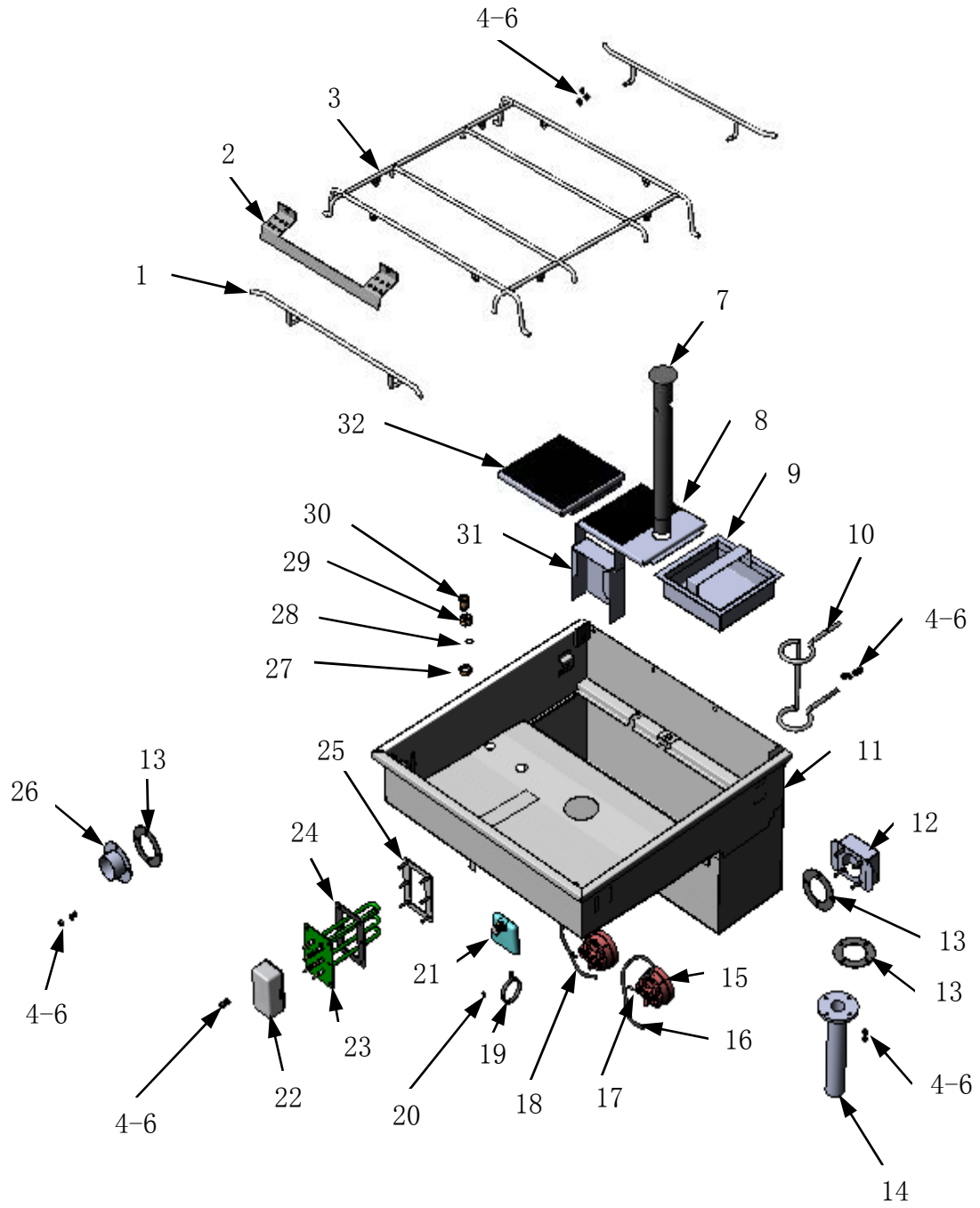
WASH SYSTEM



WASH SYSTEM

| | PART NO. | NAME OF PART | AMT. |
|----|-----------------|---------------------------|-------------|
| 1 | 743275 | Upper Manifold/Shaft Assy | 1 |
| 2 | 67500-6 | O Ring 12.5*2.65 | 4 |
| 3 | 743260 | Rinse Piping Assy | 1 |
| 4 | NS-M6 | NUT M6 | 20 |
| 5 | WL-M6 | Lock Washer M6 | 20 |
| 6 | WS-M6 | Washer M6 | 20 |
| 7 | 474681 | Wash Arm Assy | 2 |
| 8 | 743446 | Rinse Arm Assy | 2 |
| 9 | 743446-3 | End Cap- Rinse Arm | 4 |
| 10 | 743446-1 | Rinse Nozzle | 16 |
| 11 | 473637 | Ball Bearing Assy | 2 |
| 12 | 743263-1 | Clamp- Rinse Piping | 2 |
| 13 | 743308 | Spacer- Wash Arm | 1 |
| 14 | RR-11-03 | Retaining Ring | 1 |
| 15 | 743309 | Throttle Plate | 1 |
| 16 | 743399 | Lower Manifold/Shaft Assy | 1 |
| 17 | 473984 | Gasket- Manifold | 1 |
| 18 | 473460 | Nut- Manifold | 1 |
| 19 | 67500-10 | O Ring 22.4*3.55 | 3 |
| 20 | 743264 | Wash Piping Assy | 1 |
| 21 | 743263 | Clamp- Wash Piping | 2 |
| 22 | 474674 | Cleaning Plug | 4 |
| 22 | SCH-M6-15 | Bolt M6*15 | 12 |

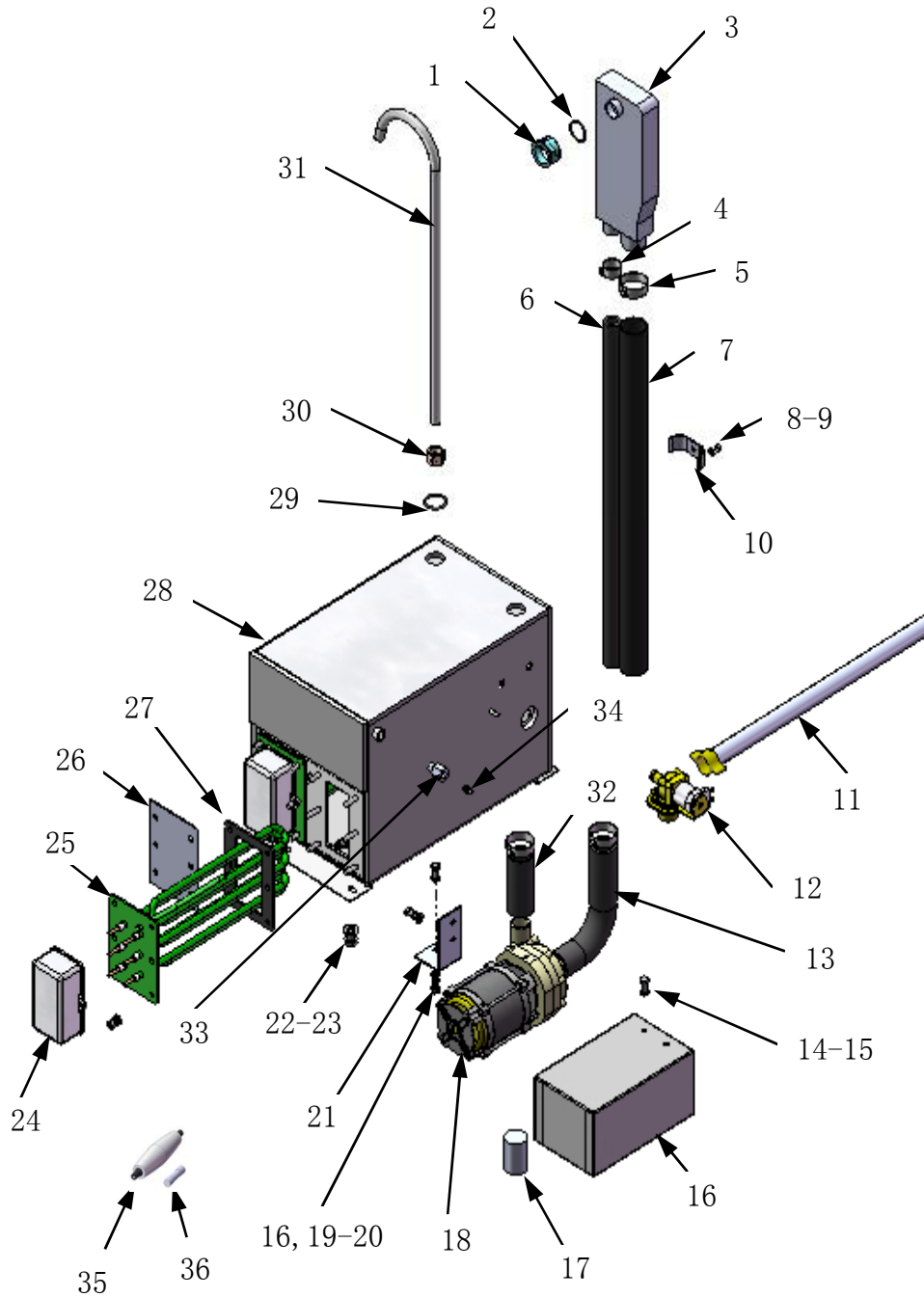
TANK



TANK

| | PART NO. | NAME OF PART | AMT. |
|----|-----------------|--|-------------|
| 1 | 743295 | Track- Side Rail | 2 |
| 2 | 743270 | Plate- Splash Protection | 1 |
| 3 | 743265 | Track- Rack | 1 |
| 4 | WS-M6 | washer 6 | 75 |
| 5 | WL-M6 | Lock washer 6 | 54 |
| 6 | NS-M6 | Nut M6 | 55 |
| 7 | 743302 | Overflow Pipe | 1 |
| 8 | 743297 | Strainer Pan- Right | 1 |
| 9 | 743298 | Strainer Basket | 1 |
| 10 | 743274 | Support- Overflow Pipe | 1 |
| 11 | 743272 | Tank | 1 |
| 12 | 743262 | Inlet- Wash Pump | 1 |
| 13 | 473983 | Gasket- Drain | 3 |
| 14 | 743304 | Piping- Drain | 1 |
| 15 | 231981-1 | Pressure Switch | 2 |
| 16 | 743303 | Pressure Switch Tube- Long | 1 |
| 17 | SDT-M3-12 | Bolt- Self Screw M3*12 | 9 |
| 18 | 743303-1 | Pressure Switch Tube- Short | 1 |
| 19 | 122577-2 | ply-yarn drill | 1 |
| 20 | NS-47-94 | Lock Washer | 1 |
| 21 | 324858 | Air Chamber | 1 |
| 22 | 743313 | Cover- Heater Terminal | 1 |
| 23 | 743278-2 | 3 kW Tank Hater (For 380/50/3, 220/60/1) | 1 |
| | 743278-3 | 5 kW Tank Hater (For 220/60/1, 380/50/3) | |
| | 743278-4 | 3 kW Tank Hater (For 200/50/3, 200/60/3) | |
| 24 | 743312 | Gasket- Heater | 3 |
| 25 | 743279 | Plate- Heater Mounting | 1 |
| 26 | 743359 | Inlet Tube- Wash Pump | 1 |
| 27 | 743293 | Nut- Sealed | 2 |
| 28 | 67500-6 | O Ring 12.5*2.65 | 4 |
| 29 | 743292 | Nut- Plug & Tube | 1 |
| 30 | 743291 | Screw- Sealed | 1 |
| 31 | 743277 | Strainer- Pump Intake | 1 |
| 32 | 743296 | Strainer Pan- Left | 1 |

WATER INLET

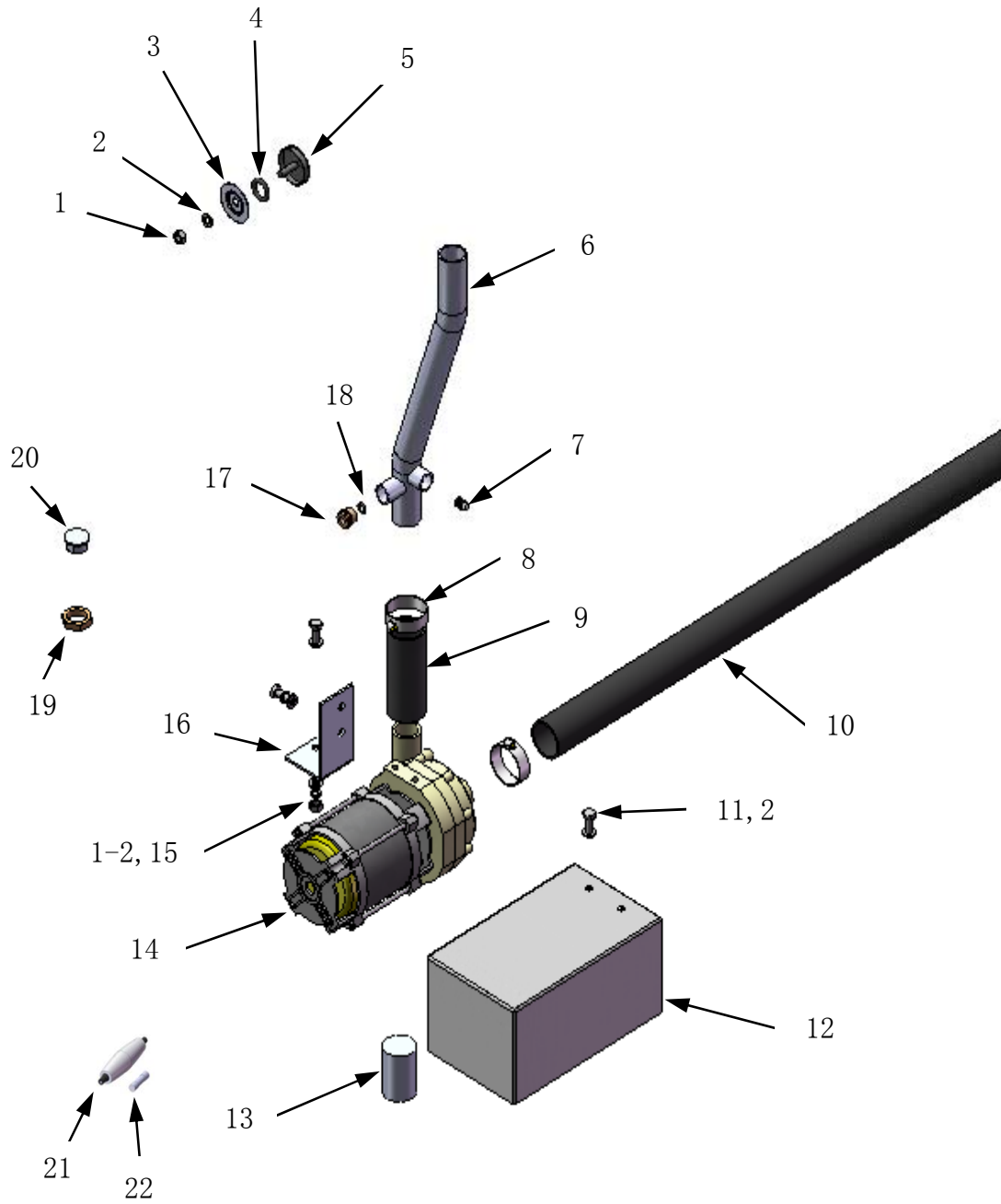


WATER INLET

| | PART NO. | NAME OF PART | AMT. |
|----|-----------------|---|-------------|
| 1 | 324183 | Nut-Inner | 1 |
| 2 | 67500-10 | O Ring 22.4*3.55 | 3 |
| 3 | 886641 | Air gap | 1 |
| 4 | 743315 | Clamp-25 | 2 |
| 5 | 743439 | Clamp-35 | 6 |
| 6 | 743430 | Hose- Outlet | 1 |
| 7 | 743440 | Hose- Inlet | 1 |
| 8 | NS-M5 | Nut M5 | 1 |
| 9 | WS-M5 | Washer 5 | 1 |
| 10 | 743433 | Clamp-hose | 1 |
| 11 | 324088-1 | Fill Hose | 1 |
| 12 | 324207-1 | Inlet Valve | 1 |
| 13 | 743435 | Hose- Rinse Pump Inlet | 1 |
| 14 | SCH_M6-15 | Bolt M6*15 | 20 |
| 15 | WS-M6 | washer 6 | 75 |
| 16 | 743437 | Cover- Rinse Pump | 1 |
| 17 | 743436 | Capacitor- Rinse Pump (450V/5uf) | 1 |
| 18 | 324093-21 | rinse pump(270W Single Phase For 380/50/3,200/50/3,220/50/3, | 1 |
| | 324093-23 | rinse pump(270W Single Phase For 220/60/3,220/60/1) | |
| | 324093-25 | rinse pump(270W Single Phase For 200/60/3) | |
| 19 | NS-M6 | Nut M6 | 55 |
| 20 | WL-M6 | Lock Washer 6 | 54 |
| 21 | 743387 | Bracket- Rinse Pump | 1 |
| 22 | SCH_M10-10 | Bolt M10*10 | 1 |
| 23 | 743311 | Washer-Combination M10 | 1 |
| 24 | 743313 | Cover- Heater Terminal | 3 |
| 25 | 743314 | 7kW Booster- Heater (For 380/50/3,220/50/3,220/60/3,220/60/1) | 2 |
| | 743314-1 | 7kW Booster- Heater (For 200/50/3,200/60/3) | |
| 26 | 743318 | Cover- Booster Heater | 1(option) |
| 27 | 743312 | Gasket- heater | 3 |
| 28 | 743385 | Open Booster | 1 |
| 29 | 743293 | Nut- Sealed | 4 |
| 30 | 67500-6 | O Ring 12.5*2.65 | 6 |
| 31 | 743385-12 | Booster Vent | 1 |
| 32 | 743392 | Hose- Rinse Pump Outlet | 1 |
| 33 | 743385-13 | converter | 1 |
| 34 | 743338 | Pipe Plug 1/8" | 2 |
| 35 | 743407-2 | Fuse Box | 2 |
| 36 | 743407-1 | Fuse (1.6A) | 2 |

已更改为
743444-2

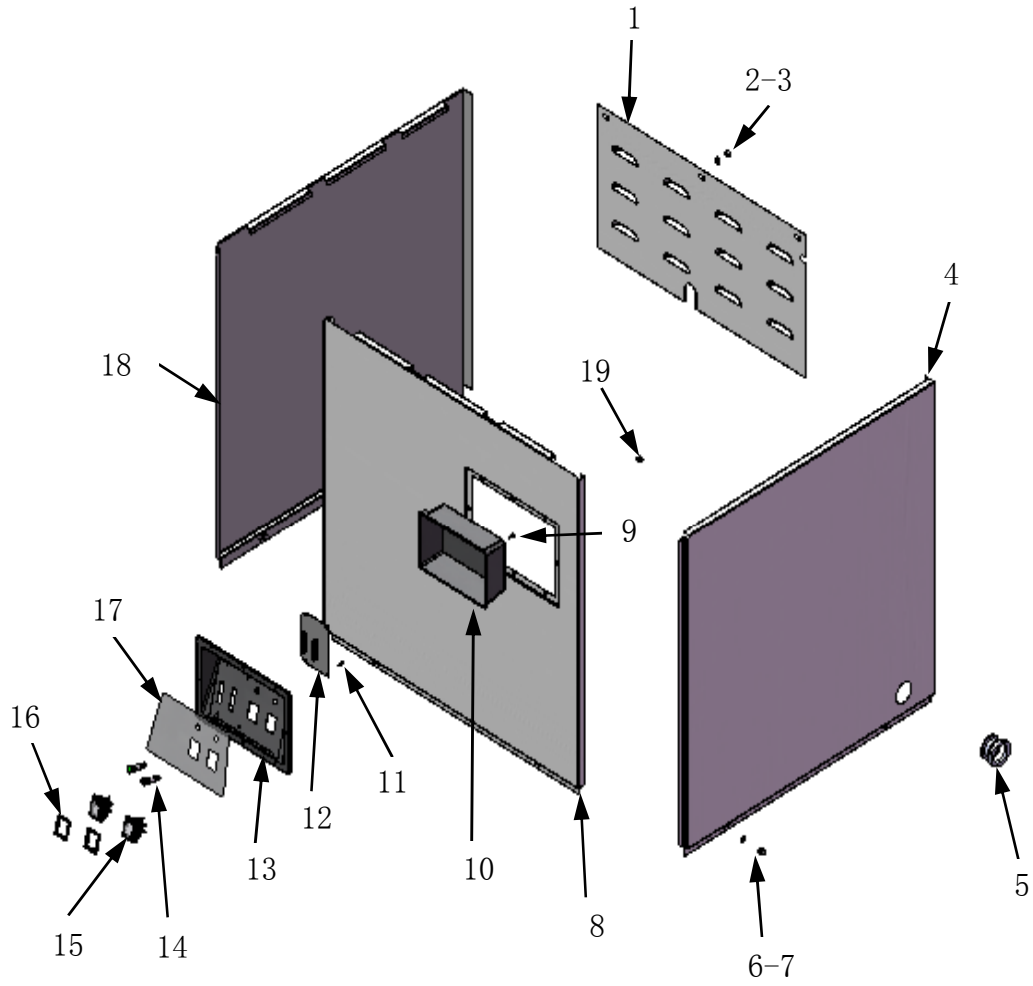
Water Inlet (No Booster)



Water Inlet (No Booster)

| | PART NO. | NAME OF PART | AMT. |
|----|-----------------|--|-------------|
| 1 | NS-M6 | Nut M6 | 55 |
| 2 | WS-M6 | Washer M6 | 75 |
| 3 | 119254 | Retainer- Cap & Stud | 1 |
| 4 | 67500-10 | "O" Ring 22.4*3.55 | 3 |
| 5 | 119243 | Cap & Stud Assy | 1 |
| 6 | 743443 | Piping- Rinse | 1 |
| 7 | 743338 | Pipe Plug 1/8" | 2 |
| 8 | 743439 | Clamp- Hose 35mm | 4 |
| 9 | 743392 | Hose- Rinse Pump Outlet | 1 |
| 10 | 545674 | Hose- Water Inlet | 1 |
| 11 | SCH-M6-15 | Bolt M6*15 | 20 |
| 12 | 743437 | Cover- Rinse Pump | 1 |
| 13 | 743436 | Capacitor- Rinse Pump (450V/5uf) | 1 |
| 14 | 324093-21 | Rinse Pump (270W Single Phase For 380/50/3,200/50/3,220/50/3,220/5 | 1 |
| | 324093-23 | Rinse Pump (270W Single Phase For 220/60/3,220/60/1) | |
| | 324093-25 | Rinse Pump (270W Single Phase For 200/60/3) | |
| 15 | WL-M6 | Lock Washer M6 | 54 |
| 16 | 743387 | Mounting Bracket- Rinse Pump | 1 |
| 17 | 743444 | Nut- Thermometer Sensor | 1 |
| 18 | 743444-1 | O Ring 6*1.8 | 1 |
| 19 | 743292 | Nut- Plug & Tube | 2 |
| 20 | 743291-1 | Plug- Tank | 1 |
| 21 | 743407-2 | Fuse Box | 1 |
| 22 | 743407-1 | Fuse (1.6A) | 1 |

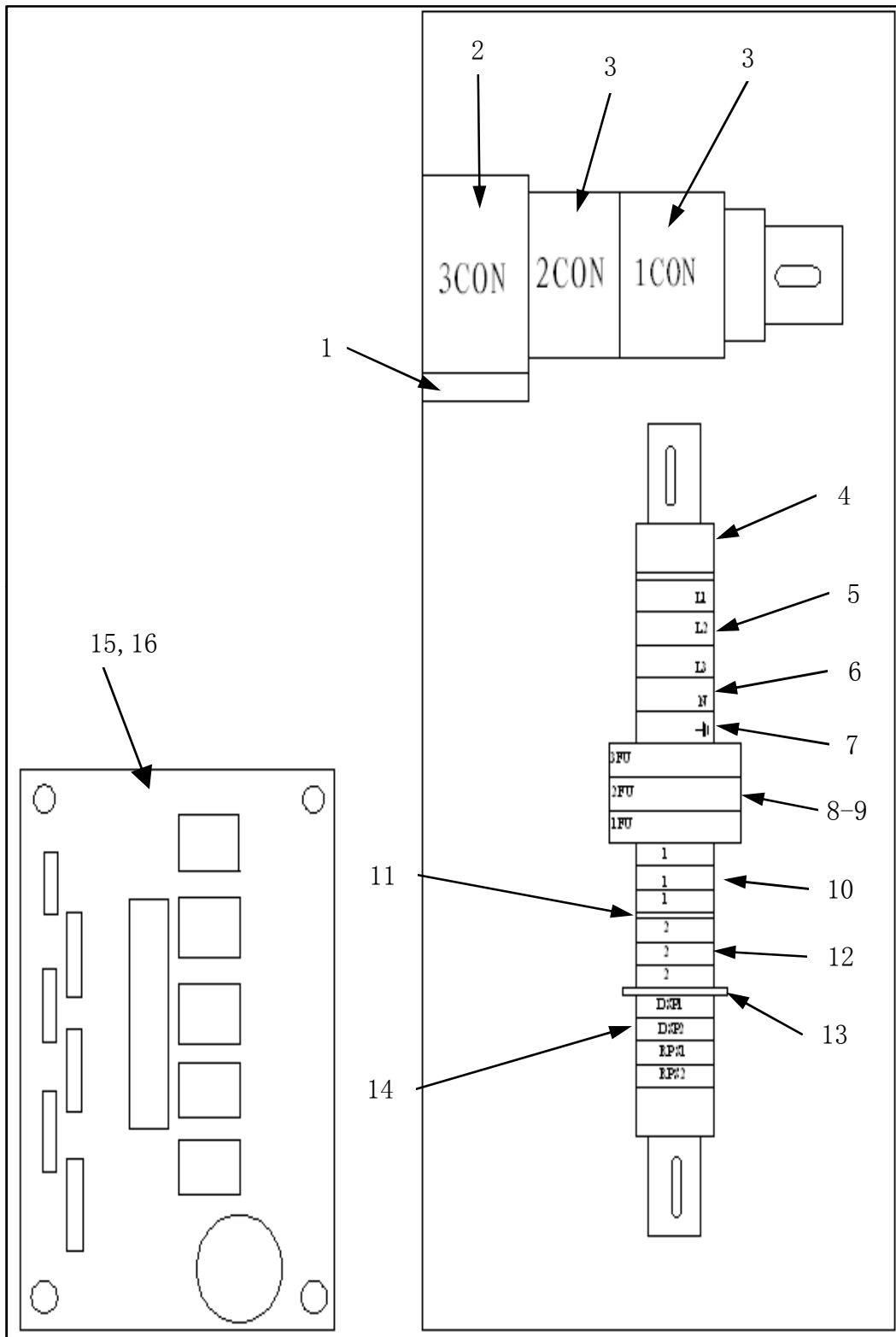
PANEL



PANEL

| | PART NO. | NAME OF PART | AMT. |
|----|-----------------|---------------------------------|-------------|
| 1 | 743281 | Panel- Rear | 1 |
| 2 | WS-M6 | Washer M6 | 26 |
| 3 | NS-M6 | Nut M6 | 20 |
| 4 | 743259 | Panel- Right | 1 |
| | 743259-3 | Panel- Right (With hole) | |
| 5 | 743259-2 | Panel Plug | 1 |
| 6 | WS-M5 | Washer 5 | 8 |
| 7 | NC-M5 | Nut M5 Crown | 6 |
| 8 | 743253 | Panel- Front | 1 |
| 9 | SDT-M4-12 | Bolt- Self Screw M4*12 | 4 |
| 10 | 743426 | Control Panel- Interior Cover | 1 |
| 11 | SDT-M3-12 | Bolt- Self Screw M3*12 | 6 |
| 12 | 743379-1 | Thermometer | 1 |
| 13 | 743426-1 | Control Panel- Exterior Face | 1 |
| 14 | 743432 | Indicator Lights | 2 |
| 15 | 743429 | Switch | 2 |
| 16 | 743431 | Switch Covers- Water Protection | 2 |
| 17 | 743426-3 | Faceplate | 1 |
| 18 | 743259-1 | Panel- Left | 1 |
| | 743259-4 | Panel- Left (With hole) | |
| 19 | 743426-4 | Washer-Control Panel | 8 |

CONTROL BOX



CONTROL BOX

| | PART NO. | NAME OF PART | AMT. |
|----|-----------------|--|-------------|
| 1 | 743403 | RC Unit | 1 |
| 2 | 743401 | Contactor 32 Amp (For 380/50/3, 220/60/3, 220/60/1) | 1 |
| | 743401-1 | Contactor 32 Amp (For 200/50/3, 200/60/3) | |
| 3 | 743402 | Contactor 9 Amp (For 380/50/3, 220/60/3, 220/60/1) | 2 |
| | 743402-1 | Contactor 9 Amp (For 200/50/3, 200/60/3) | |
| 4 | 743413 | Holder- Side | 3 |
| 5 | 743400 | Breaker40A/3P(For3853-10,3853-15,2263-9,2053-4,2063-4) | 3 |
| | 743400-1 | Breaker20A/3P(For2053-1,2063-1,2261-6) | |
| | 743400-2 | Breaker63A/3P(For2261-9) | |
| | 743400-3 | Breaker25A/3P(For3853-9) | |
| | 743400-4 | Breaker63A/3P(For2253-10) | |
| 6 | 743408 | Terminal 6N | 1 |
| 7 | 743406 | Terminal- Ground | 1 |
| 8 | 743405 | Terminal- Fuse | 3 |
| 9 | 743407 | Fuse3A 5*20 | 3 |
| 10 | 743410 | Terminal 3N | 3 |
| 11 | 743441 | Plate- Side | 1 |
| 12 | 743410-1 | Terminal 3N (Blue) | 3 |
| 13 | 743412 | Plate- Division | 1 |
| 14 | 743416-1 | Terminal assy(including pares 5-13),(three-phase five-wire system) | 1 |
| | 743416-2 | Terminal assy(including pares 5-13),(three-phase four-wire system) | |
| | 743416-3 | Terminal assy(including pares 5-13)(single-phase five-wire system) | |
| 15 | 743448T | Control Board | 1 |
| 16 | 743448T-1 | Microprocessor Chip | 1 |