

HOBART

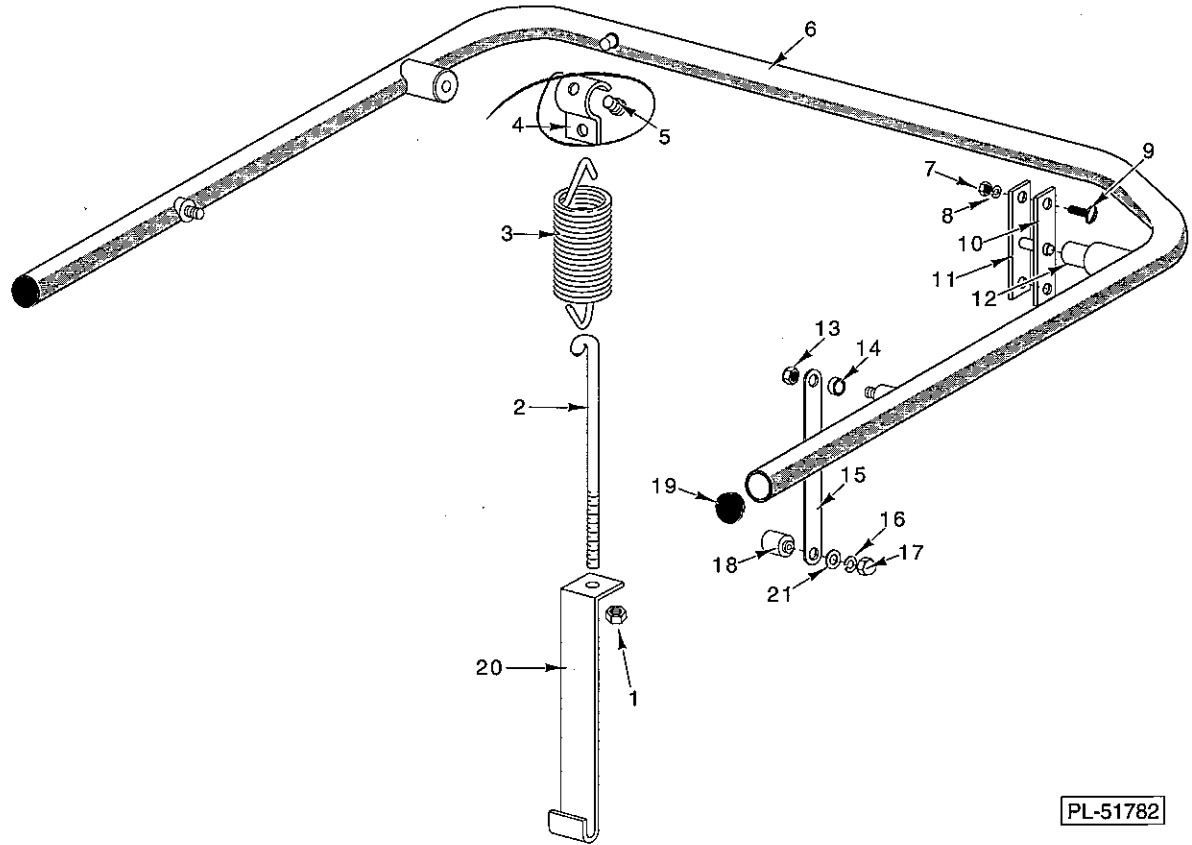
**CATALOG OF
REPLACEMENT PARTS**

**AM2 DISHWASHERS
ML-110196 AM2**

HOBART INTERNATIONAL 701 RIDGE AVENUE TROY, OHIO 45374-0001

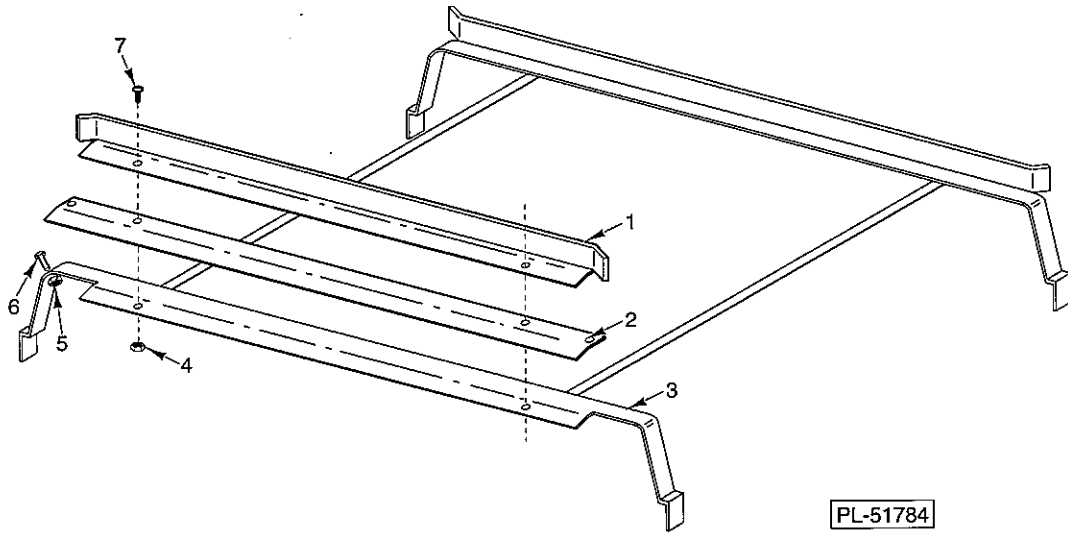
FORM 23005 (5-95)

AM2 DISHWASHER REPLACEMENT PARTS



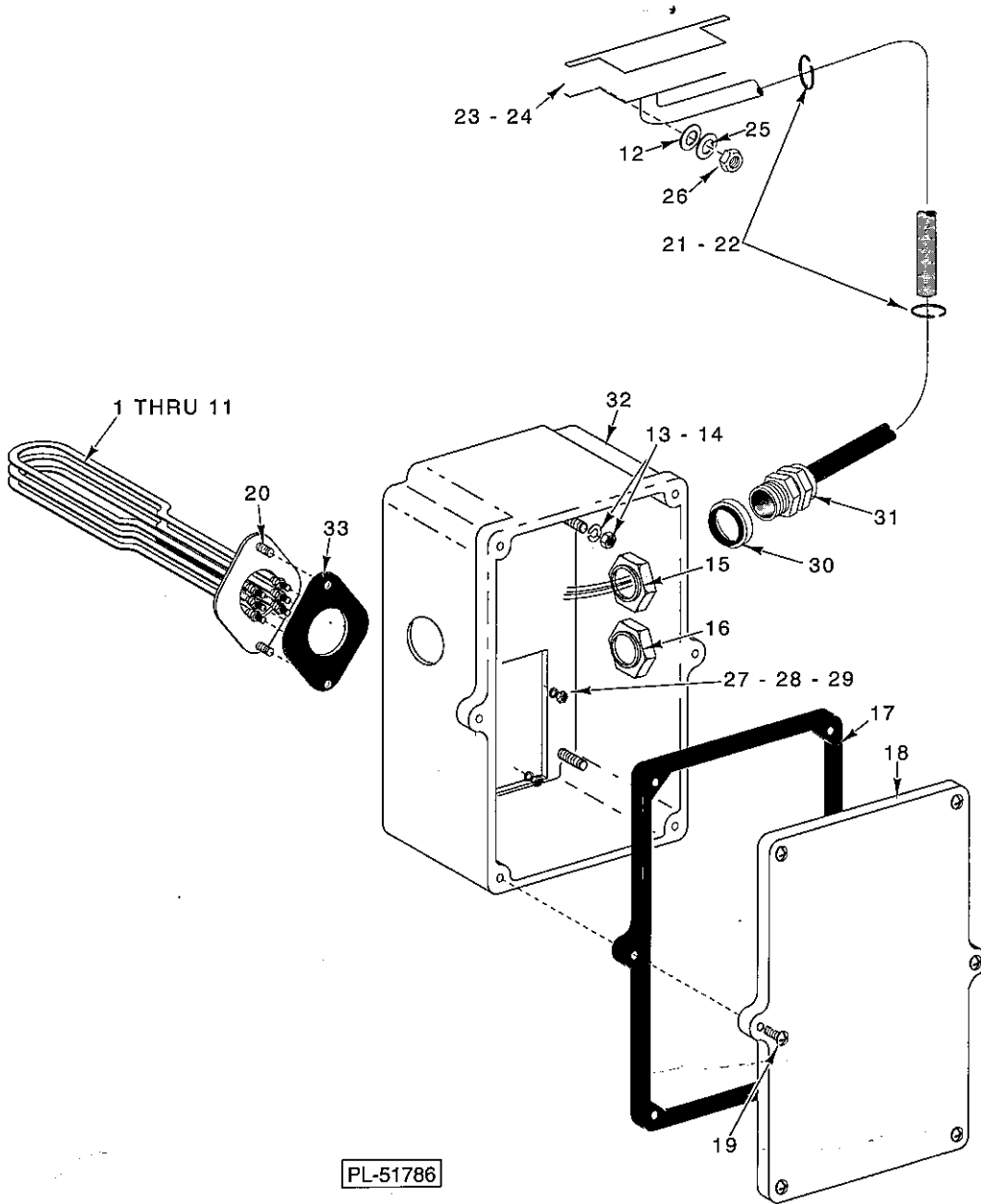
DOOR LIFT

| ILLUS. PL-51782 | PART NO. | NAME OF PART | AMT. |
|--------------------|-------------|--|------|
| 1 | NS-15-11 | Full Nut 5/16-18 Hex | 2 |
| 2 | 186334-2 | Hook - Spring | 1 |
| 3 | 119079-2 | Spring - Counterbalance | 1 |
| 4 | 79008 | Hanger - Spring | 1 |
| 5 | 119055 | Button - Bearing | 2 |
| 6 | 474080-1 | Door Lift Assy. | 1 |
| 7 | NS-15-11 | Full Nut 5/16-18 Hex | 4 |
| 8 | WL-6-23 | Lockwasher 5/16 Medium SST | 4 |
| 9 | SC-53-16 | Mach. Screw 5/16-18 x 5/8 Truss HD. | 4 |
| 10 | 119053 | Gasket - Door Lift | 2 |
| 11 | 119017 | Bearing Bracket & Pin Assy. | 2 |
| 12 | 119104 | Bushing - Door Lift Pin | 2 |
| 13 | NS-32-35 | Stop Nut 5/16-18 "Flexloc" | 2 |
| 14 | 74068 | Spacer - Door Link | 2 |
| 15 | 119011 | Link - Door | 2 |
| 16 | WL-6-23 | Lockwasher 5/16 Medium SST | 2 |
| 17 | NS-25-9 | Nut 5/16-18 Crown | 2 |
| 18 | 119046 | Pin - Door Lift | 2 |
| 19 | 119076 | Plug - Handle | 2 |
| 20 | 185044 | Bracket - Spring | 1 |
| 21 | WS-5-32 | Washer | 2 |



TRACKS

| ILLUS. | PART NO. | NAME OF PART | AMT. |
|--------|----------|---|------|
| 1 | 185050 | Side - Rack Track | 1 |
| 2 | 185053 | Guard - Door Splash | 1 |
| 3 | 435036 | Track Weldment | 1 |
| 4 | NS-31-15 | Stop Nut - Special 10-24 Hex (SST) | 2 |
| 5 | NS-31-15 | Stop Nut - Special 10-24 Hex (SST) | 2 |
| 6 | SC-53-2 | Mach. Screw 10-24 x 1/2 Truss Hd. SST | 2 |
| 7 | SC-53-2 | Mach. Screw 10-24 x 1/2 Truss Hd. SST | 2 |

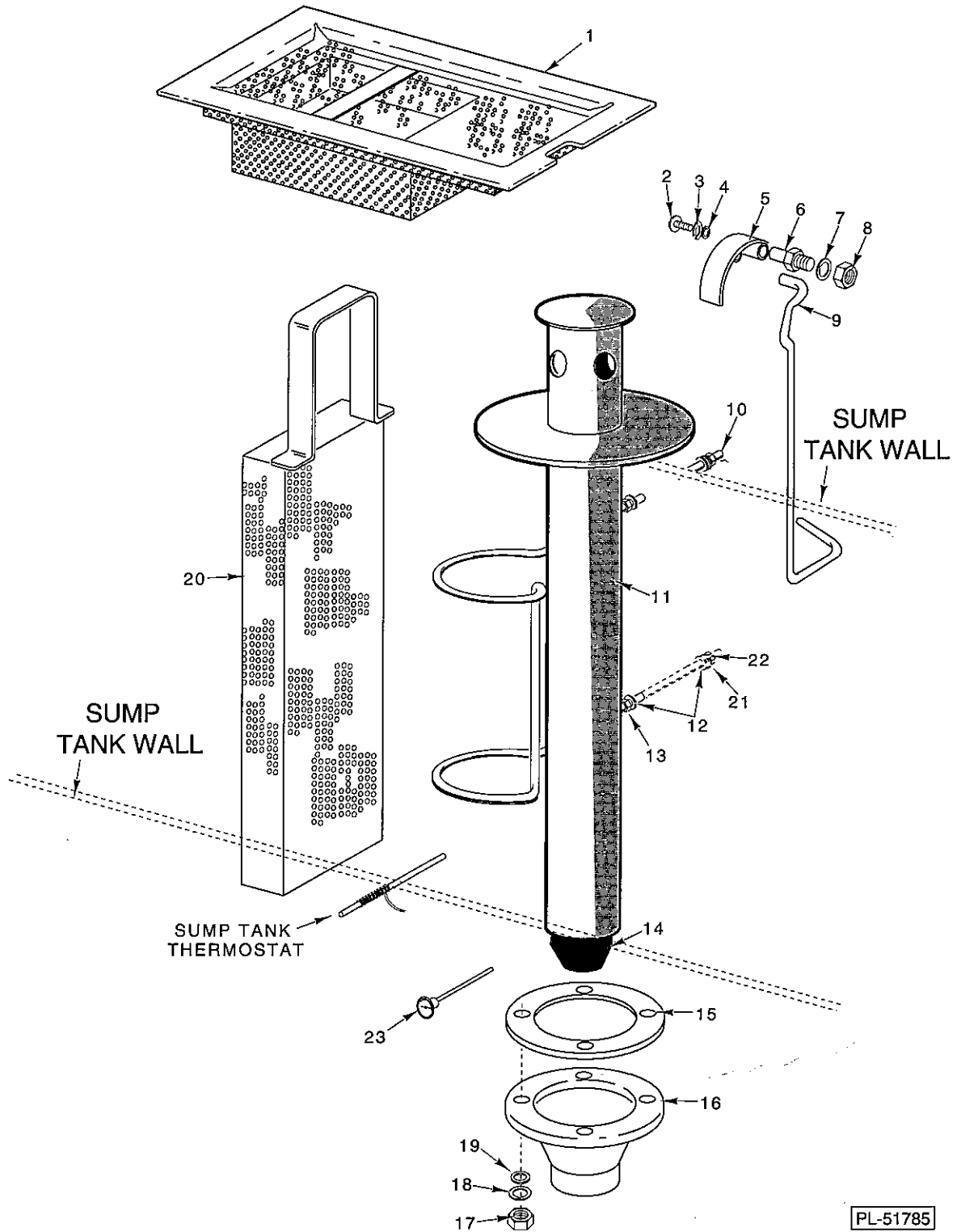


PL-51786

ELECTRIC HEAT BOX AND ELEMENT

ELECTRIC HEAT BOX AND ELEMENT

| ILLUS. PL-51786 | PART NO. | NAME OF PART | AMT. |
|--------------------|---------------------|---|--------------|
| 1 | 473761-1 | Heater - Sump (100/1)(2000 Watts) | 1 |
| 2 | 473761-2 | Heater - Sump (200-208/3)(2000 Watts) | 1 |
| 3 | 473761-3 | Heater - Sump (220-240/3)(2000 Watts) | 1 |
| 4 | 473761-12 | Heater - Sump (380-415/3)(500 Watts) | 1 |
| 5 | 473761-5 | Heater - Sump (220-240/1)(2000 Watts) | 1 |
| 6 | 473761-6 | Heater - Sump (380-415/3)(2000 Watts) | 1 |
| 7 | 473761-7 | Heater - Sump (100/1)(500 Watts) | 1 |
| 8 | 473761-8 | Heater - Sump (200-208/3)(500 Watts) | 1 |
| 9 | 473761-9 | Heater - Sump (220-240/3)(500 Watts) | 1 |
| 10 | 473761-10 | Heater - Sump (200-208/1)(500 Watts) | 1 |
| 11 | 473761-11 | Heater - Sump (220-240/1)(500 Watts) | 1 |
| 12 | WS-23-21 | Washer | 2 |
| 13 | WL-6-17 | Lockwasher ¼ Medium | 4 |
| 14 | NS-15-1 | Full Nut ¼-20 Hex | 4 |
| 15 | FE-24-88 | Locknut ½ | 1 |
| 16 | FE-24-88 | Locknut ½ | 1 |
| 17 | 112005 | Gasket (Lid) | 1 |
| 18 | 289146-1 | Lid & Gasket Assy. (Incls item 17) | 1 |
| 19 | SD-12-20 | Self-Tapping Screw 8-32 x ½ Phil. Truss Hd., Type T | 6 |
| 20 | SC-41-12 | Cap Screw ⅝-18 x ⅞ Hex Hd. | 2 |
| 21 | 122577-2 | Wire Tie | 2 |
| 22 | NS-47-94 | Nut-Lock Special ⅜ | 2 |
| 23 | 474098-2 | Door Interlock Assy. | 1 |
| 24 | 474098-3 | Switch - Interlock (W/ Electric Booster) | 1 |
| 25 | WL-6-42 | Lockwasher 6 Medium | 2 |
| 26 | NS-11-7 | Mach. Nut 6-32 Hex | 2 |
| 27 | WS-17-8 | Washer | 2 |
| 28 | WL-6-23 | Lockwasher ⅝ Medium SST | 2 |
| 29 | NS-15-11 | Full Nut ⅝-18 Hex | 2 |
| 30 | FE-8-10 | ½ Gasket Assy. | 2 |
| 31 | FE-22-84 | Connector - Strain Relief | 2 |
| 32 | 473976 | Box - Electric Sump Heat | 1 |
| 33 | 293598 | Gasket - Heater Mounting | 1 |

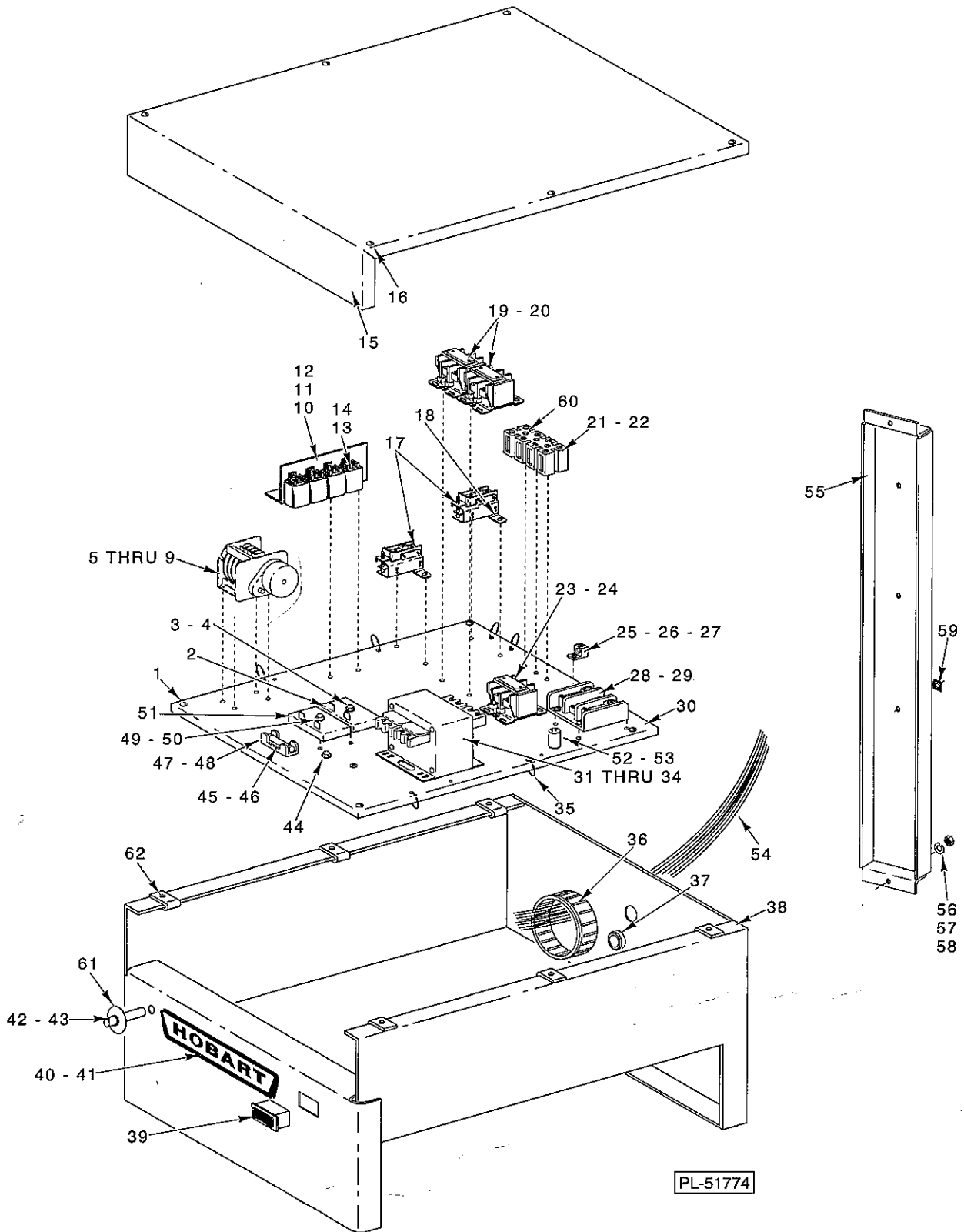


STRAINERS AND DRAIN UNIT

STRAINERS AND DRAIN UNIT

| ILLUS. PL-51785 | PART NO. | NAME OF PART | AMT. |
|--------------------|-------------|---|------|
| 1 | 473937 | Strainer Assy. | 1 |
| 2 | SC-21-22 | Mach. Screw 10-24 x 3/8 Rd. Hd. SST | 1 |
| 3 | WL-6-7 | Lockwasher 10 Medium | 1 |
| 4 | WS-23-34 | Washer | 1 |
| 5 | 119121 | Drain Lever Assy. | 1 |
| 6 | 119116 | Axle - Drain Lever | 1 |
| 7 | WL-6-17 | Lockwasher 1/4 Medium | 1 |
| 8 | NS-15-1 | Full Nut 1/4-20 Hex | 1 |
| 9 | 119119 | Rod - Overflow Lift | 1 |
| 10 | 473982 | Retainer - Tube Overflow | 1 |
| 11 | 473978 | Overflow Tube Assy. | 1 |
| 12 | WS-17-6 | Washer | 4 |
| 13 | NS-18-1 | Jam Nut 1/4-20 Hex | 2 |
| 14 | 473689 | Stopper - Drain | 1 |
| 15 | 473983 | Gasket - Drain | 1 |
| 16 | 473759 | Sump - Drain | 1 |
| 17 | NS-15-1 | Full Nut 1/4-20 Hex | 4 |
| 18 | WL-6-17 | Lockwasher 1/4 Medium | 4 |
| 19 | WS-17-6 | Washer | 4 |
| 20 | 473942 | Intake Pump Strainer Assy. | 1 |
| 21 | WL-6-17 | Lockwasher 1/4 Medium | 2 |
| 22 | NS-18-1 | Jam Nut 1/4-20 Hex | 2 |
| 23 | 473988 | Thermometer | 1 |

AM2 DISHWASHER REPLACEMENT PARTS



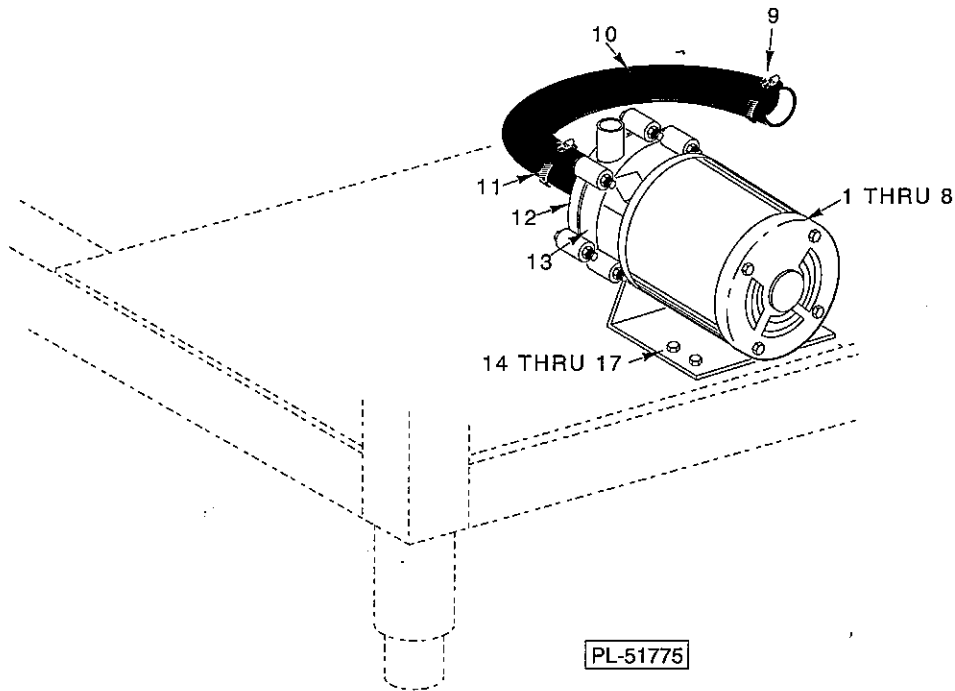
CONTROL BOX ASSY.

PL-51774

CONTROL BOX ASSY.

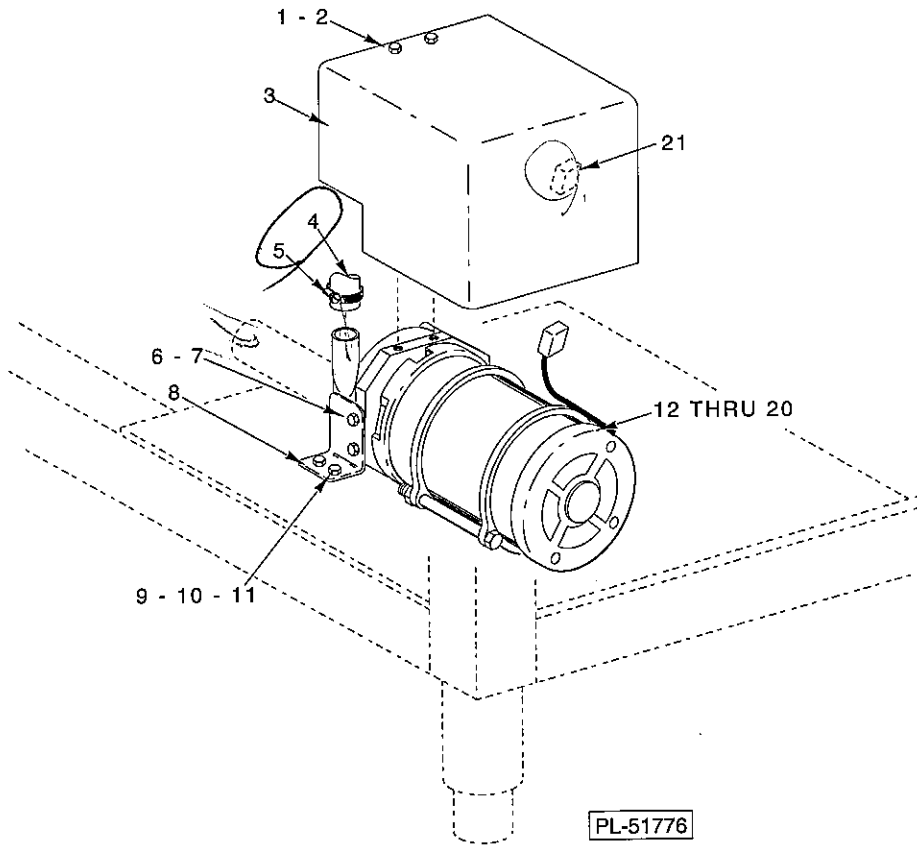
| ILLUS. PL-51774 | PART NO. | NAME OF PART | AMT. |
|--------------------|-------------|--|------|
| 1 | SC-53-5 | Mach. Screw 10-24 x 3/8 Truss Hd, Slotted | 4 |
| 2 | 87714-31-2 | Relay Time Delay (5 Sec.) | 1 |
| 3 | SD-36-13 | Self-Tapping Screw 1/4-20 x 1 1/4 Slotted Hex Washer Hd., Type T | 1 |
| 4 | WL-7-15 | Lockwasher 1/4 External Shakeproof | 1 |
| 5 | 474071-1 | Cam Timer Assy. (120V., 60HZ., 60 Sec.) | 1 |
| 6 | 474071-2 | Cam Timer Assy. (120V., 50HZ., 60 Sec.) | 1 |
| 7 | 474071-3 | Cam Timer Assy. (120V., 60HZ., 90 Sec.) | 1 |
| 8 | 474071-4 | Cam Timer Assy. (120V., 50HZ., 90 Sec.) | 1 |
| 9 | SD-8-18 | Self-Tapping Screw 8-18 x 3/8 Phil. Bind Hd., Type B | 4 |
| 10 | 437103 | Bracket - Relay Mtg. | 1 |
| 11 | SD-8-25 | Self-Tapping Screw 10 x 3/8 Phil Bind Hd., Type B | 2 |
| 12 | WL-14-7 | Lockwasher 10 External Shakeproof(SST) | 2 |
| 13 | 87714-20-2 | Relay (3 P.D.T.)(10A., 120 V.A.C.) | 4 |
| 14 | SD-19-29 | Self-Tapping Screw 6-20 x 1/2 Phil Pan Hd., Type B | 8 |
| 15 | 473973 | Lid - Box Control | 1 |
| 16 | SC-53-5 | Mach. Screw 10-24 x 3/8 Truss Hd, Slotted | 6 |
| 17 | 294681-20-2 | Thermostat - Tank Heat <i>> 24681-21-K</i> | 2 |
| 18 | SD-8-25 | Self-Tapping Screw 10 x 3/8 Phil Bind Hd., Type B | 4 |
| 19 | 87713-40-2 | Contactor - 30 Amp 3 Pole | 2 |
| 20 | SD-8-25 | Self-Tapping Screw 10 x 3/8 Phil Bind Hd., Type B | 4 |
| 21 | 294325-13-2 | Block - Terminal (Over 250 Volts) | 1 |
| 22 | 294325-13-4 | Block - Terminal (Under 250 Volts) | 1 |
| 23 | 87713-41-2 | Contactor 40 Amp 3 Pole | 1 |
| 24 | SD-8-25 | Self-Tapping Screw 10 x 3/8 Phil Bind Hd., Type B | 2 |
| 25 | 118544-2 | Lug - Grounding | 1 |
| 26 | SD-35-77 | Self-Tapping Screw 1/4-20 x 3/8 Phil. Pan Hd., Type TT | 1 |
| 27 | WL-7-15 | Lockwasher 1/4 External Shakeproof | 1 |
| 28 | 119031 | Terminal Block | 1 |
| 29 | SD-8-1 | Self-Tapping Screw 10 x 3/4 Rd. Hd., Type B | 4 |
| 30 | 474083 | Plate - Base | 1 |
| 31 | 294500-28 | Transformer (50VA, 3PH., W/Elec. Booster; Hi-Volt W/O Booster) | 1 |
| 32 | 294500-24-2 | Transformer (300VA, 50/60Hz.)(High Voltage) | 1 |
| 33 | SD-8-25 | Self-Tapping Screw 10 x 3/8 Phil Bind Hd., Type B | 4 |
| 34 | WL-14-7 | Lockwasher 10 External Shakeproof(SST) | 4 |
| 35 | 113703 | Cable Tie | 6 |
| 36 | FE-24-13 | Bushing - Electrical 2 1/2 3/4 I.D. | 1 |
| 37 | 274947 | Grommet | 1 |
| 38 | 473969 | Control Box Weldment | 1 |
| 39 | 87711-254-2 | Switch - Rocker (DPDT) | 1 |
| 40 | 280224 | Nameplate - Hobart | 1 |
| 41 | 206177 | Clip - Nameplate | 2 |
| 42 | 294700-4-6 | Light - Pilot | 1 |
| 43 | TW-1-65 | Terminal | 2 |
| 44 | SD-8-25 | Self-Tapping Screw 10 x 3/8 Phil Bind Hd., Type B | 1 |
| 45 | FE-22-28 | Fuse 250V 1/2 Amp | 1 |
| 46 | FE-21-19 | Fuse 3.2 Amps | 1 |
| 47 | 294436-3 | Block - Fuse | 1 |
| 48 | SD-19-29 | Self-Tapping Screw 6-20 x 1/2 Phil Pan Hd., Type B | 1 |
| 49 | SD-36-13 | Self-Tapping Screw 1/4-20 x 1 1/4 Slotted Hex Washer Hd., Type T | 1 |
| 50 | WL-7-15 | Lockwasher 1/4 External Shakeproof | 1 |
| 51 | 87714-31-3 | Relay-Time Delay (15 Sec.) | 1 |
| 52 | 473936-1 | Capacitor - Motor Starter (22 Micro)(100-120/1) | 1 |
| 53 | 473936-2 | Capacitor - Motor Starter (5 Micro) (200-240/1) | 1 |
| 54 | 473526-1 | Harness - Base Plate | 1 |
| 55 | 473968 | Chase - Wireway | 1 |
| 56 | WS-22-1 | Washer | 4 |
| 57 | WL-6-7 | Lockwasher 10 Medium | 4 |
| 58 | NS-11-18 | Mach. Nut 10-24 Hex | 1 |
| 59 | NS-47-94 | Nut-Lock Special 3/16 | 1 |
| 60 | SD-19-29 | Self-Tapping Screw 6-20 x 1/2 Phil Pan Hd., Type B | 2 |
| 61 | 473705 | Label - Cycle Light | 1 |
| 62 | 74348 | Speed Nut 10 - 24 | 6 |

AM2 DISHWASHER REPLACEMENT PARTS



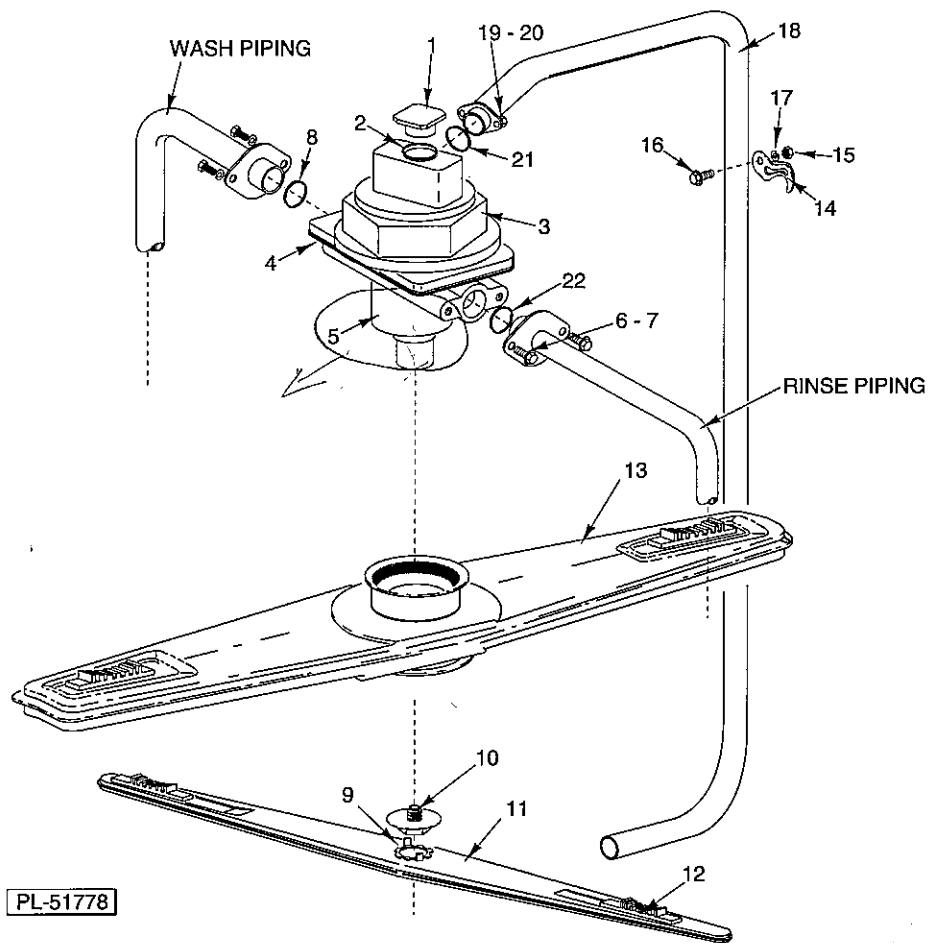
PUMP & MOTOR

| ILLUS. PL-51775 | PART NO. | NAME OF PART | AMT. |
|--------------------|-------------|---|------|
| 1 | 473661-1 | Pump / Motor Assy. (380/60/3) | 1 |
| 2 | 329240-10 | Motor Assy. (380/60/3) | 1 |
| 3 | 473661-2 | Pump / Motor Assy. (220-230/460/60/3) (190/380-415/50/3) | 1 |
| 4 | 329240-11 | Motor Assy. (220-230/460/60/3) (190/380-415/50/3) | 1 |
| 5 | 473661-3 | Pump / Motor Assy. (200/60/50/3) | 1 |
| 6 | 329240-12 | Motor Assy. (200/60/50/3) | 1 |
| 7 | 474089-1 | Pump-/Motor-Assy. (115/230/50/60/1) | 1 |
| 8 | 329240-8 | Motor Assy. (115/230/50/60/1) | 1 |
| 9 | 538412 | Clamp - Hose # 24 | 1 |
| 10 | 473974 | Hose - Wash Pump | 1 |
| 11 | 538412 | Clamp - Hose # 24 | 1 |
| 12 | 329240-2 | Support - Head (Pump - Rear) | 1 |
| 13 | 329240-3 | Casing (Pump Front) | 1 |
| 14 | SC-41-12 | Cap Screw 5/16-18 x 7/8 Hex Hd. | 4 |
| 15 | NS-15-11 | Full Nut 5/16-18 Hex | 4 |
| 16 | WL-6-23 | Lockwasher 5/16 Medium SST | 4 |
| 17 | WS-17-8 | Washer | 8 |
| | 329240-4 | Shaft Seal Kit (Incls. Seal, O Ring & Shims)(Not Shown) | 1 |
| | 329240-9 | Impeller Kit (1Ph)(Incls. Impeller, Casting, O Rings & Hwd.)(Not Shown) | 1 |
| | 329240-13 | Impeller Kit (3Ph)(Incls. Impeller, casting, o Rings & Hwd.)(Not Shown) | 1 |
| | 329240-6 | Plug Kit (Incls. Rylon Plug & O Ring)(Not Shown) | 1 |
| | 329240-7 | Shim Kit (Not Shown) | 1 |



RINSE PUMP

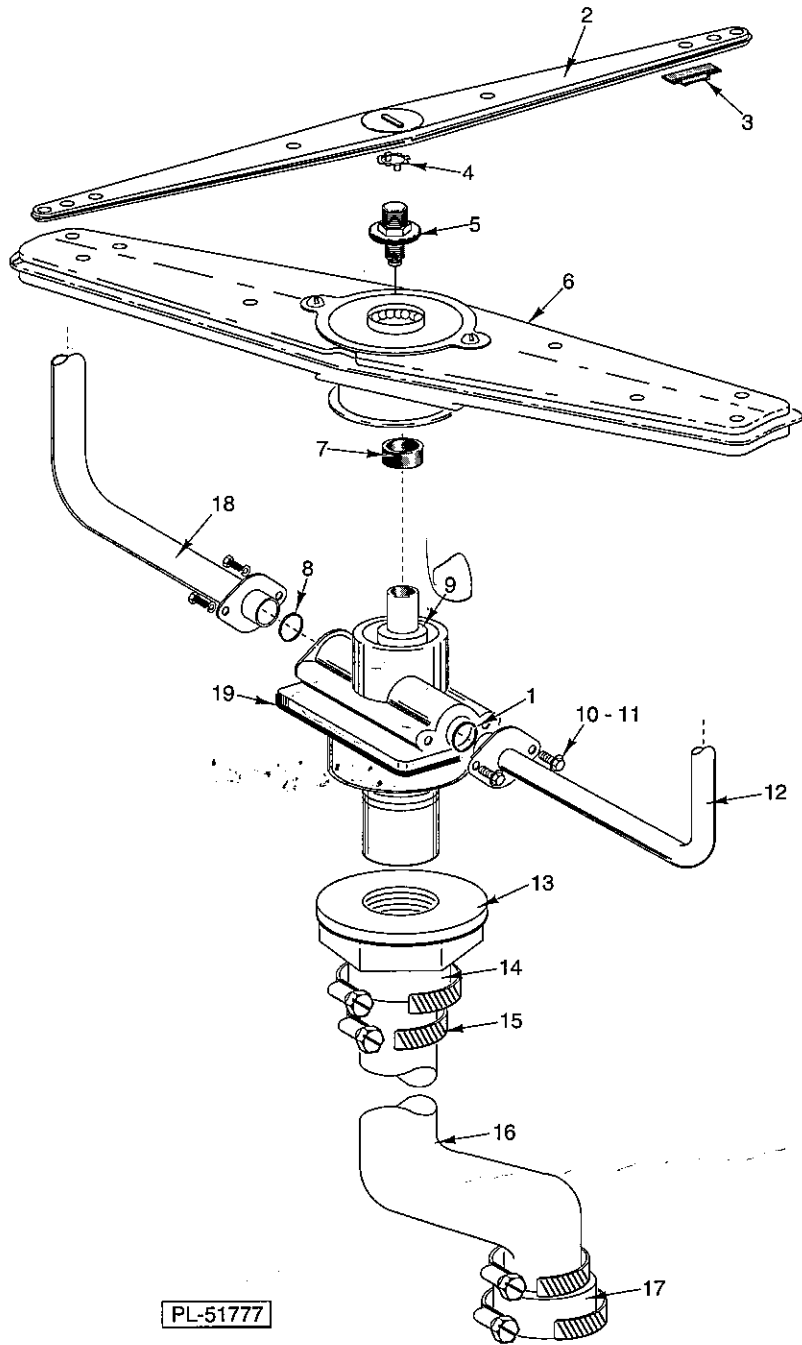
| ILLUS. PL-51776 | PART NO. | NAME OF PART | AMT. |
|--------------------|-------------|--|------|
| | 1 | SC-118-47 Cap Screw M6 x 1.0 x 16 MM Hex Hd. | 2 |
| | 2 | WL-6-17 Lockwasher ¼ Medium | 2 |
| | 3 | 473986 Cover - Pump | 1 |
| | 4 | 545674 Hose (9") (Cut to Length) | AR |
| | 5 | 521687 Clamp - Hose | 2 |
| | 6 | SC-118-47 Cap Screw M6 x 1.0 x 16 MM Hex Hd. | 2 |
| | 7 | WL-6-17 Lockwasher ¼ Medium | 2 |
| | 8 | 473985 Bracket - Rinse Pump | 1 |
| | 9 | SC-41-10 Cap Screw 5/16-18 x 5/8 Hex Hd. | 1 |
| | 10 | NS-15-11 Full Nut 5/16-18 Hex | 1 |
| | 11 | WL-6-23 Lockwasher 5/16 Medium SST | 1 |
| | 12 | 474070-1 Pump - Rinse (200-240/50/1) | 1 |
| | 13 | 474070-2 Pump - Rinse (220/60/1) | 1 |
| | 14 | 474070-3 Pump - Rinse (100-120/60/1) | 1 |
| | 15 | 474070-4 Pump - Rinse (100-120/50/1) | 1 |
| | 16 | 474070-5 Pump - Rinse (380-415/50/3) | 1 |
| | 17 | 474070-6 Pump - Rinse (380/60/3) | 1 |
| | 18 | 474070-7 Pump - Rinse (200/50/3) | 1 |
| | 19 | 474070-8 Pump - Rinse (200/60/3) | 1 |
| | 20 | 474070-9 Pump - Rinse (220-240/60/3) | 1 |
| | 21 | 122895 Connector | 1 |



UPPER WASH & RINSE ARMS

UPPER WASH & RINSE ARMS

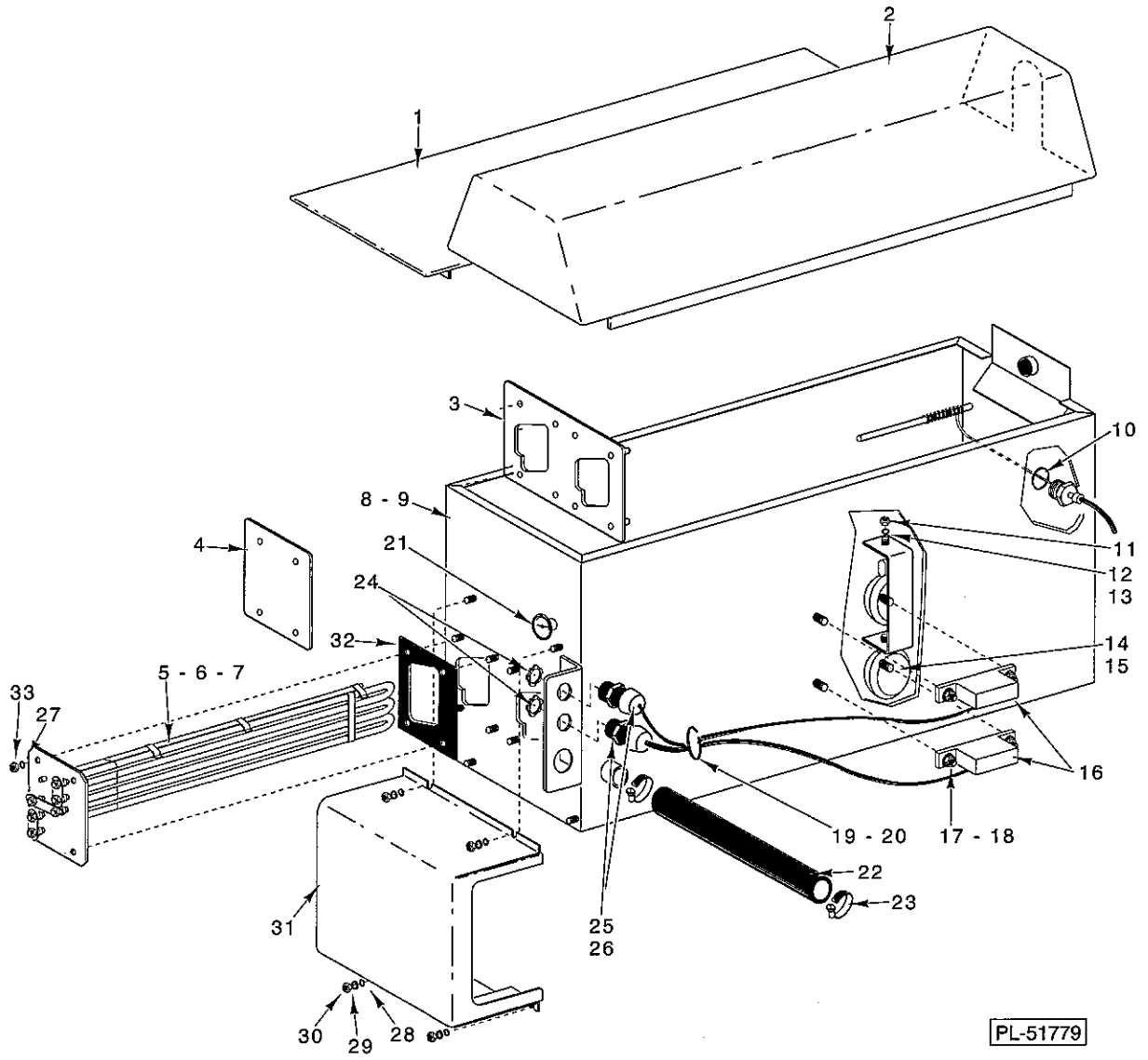
| ILLUS. PL-51778 | PART NO. | NAME OF PART | AMT. |
|--------------------|--------------------------|--|------|
| 1 | 473690 | Plug - Manifold | 1 |
| 2 | 67500-10 | "O" Ring | 1 |
| 3 | 473460 | Nut - Manifold | 1 |
| 4 | 473984 | Gasket - Manifold | 1 |
| 5 | 474260 474677 | Shaft/Mannifold, Upper Assy. | 1 |
| 6 | SC-41-50 | Cap Screw 1/4-20 x 1/2 Hex Hd. | 4 |
| 7 | WL-6-17 | Lockwasher 1/4 Medium | 4 |
| 8 | 67500-10 | "O" Ring | 1 |
| 9 | 474225 | Ring - Locking | 1 |
| 10 | 473637 | Bearing Assy.-Rinse Arm(Incls. Balls, Inner & Outer Races, Nut & Retaining Ring) | 1 |
| 11 | 473688 474679 | Arm - Rinse | 1 |
| 12 | 473780 | Plug-Clean-Out (Sliding)(2 per Arm) | 4 |
| 13 | 474099 474681 | Wash Arm Assy.(Incls. Hub, Balls, Retainer & Screws) | 1 |
| 14 | FE-25-17 | Clamp - Electrical 3/4 TS | 1 |
| 15 | NS-15-11 | Full Nut 5/16-18 Hex | 1 |
| 16 | SC-53-16 | Mach. Screw 5/16-18 x 5/8 Truss HD. | 1 |
| 17 | WL-6-23 | Lockwasher 5/16 Medium SST | 1 |
| 18 | 473966 | Outside Rinse Piping Assy. | 1 |
| 19 | SC-41-50 | Cap Screw 1/4-20 x 1/2 Hex Hd. | 2 |
| 20 | WL-6-17 | Lockwasher 1/4 Medium | 2 |
| 21 | 67500-10 | "O" Ring | 1 |
| 22 | 67500-6 | "O" Ring | 1 |



LOWER WASH & RINSE ARMS

LOWER WASH & RINSE ARMS

| ILLUS. PL-51777 | PART NO. | NAME OF PART | AMT. |
|--------------------|---------------------------------|--|------|
| 1 | 67500-6 | "O" Ring | 1 |
| 2 | 473688 <i>474678</i> | Arm - Rinse | 1 |
| 3 | 473760 <i>474674</i> | Plug-Clean-Out (Sliding)(2 per Arm) | 4 |
| 4 | 474225 | Ring - Locking | 1 |
| 5 | 473637 | Bearing Assy.-Rinse Arm(Incls. Balls, Inner & Outer Races, Nut & Retaining Ring) | 1 |
| 6 | 474099 <i>474678</i> | Wash Arm Assy.(Incls. Hub, Balls, Retainer & Screws) | 1 |
| 7 | 286944 | Spacer | 1 |
| 8 | 67500-10 | "O" Ring | 1 |
| 9 | 474261 <i>474678</i> | Shaft/Manifold, Lower Assy. | 1 |
| 10 | SC-41-50 | Cap Screw 1/4-20 x 1/2 Hex Hd. | 4 |
| 11 | WL-6-17 | Lockwasher 1/4 Medium | 4 |
| 12 | 473964 | Piping - Rinse | 1 |
| 13 | 473460 | Nut - Manifold | 1 |
| 14 | 545655 | Hose (Cut to 2 3/4" Length) | AR |
| 15 | 538412 | Clamp - Hose # 24 | 4 |
| 16 | 474218 | Tube | 1 |
| 17 | 545655 | Hose (Cut to 2 3/4" Length) | AR |
| 18 | 473961 | Piping - Wash | 1 |
| 19 | 473984 | Gasket - Manifold | 1 |

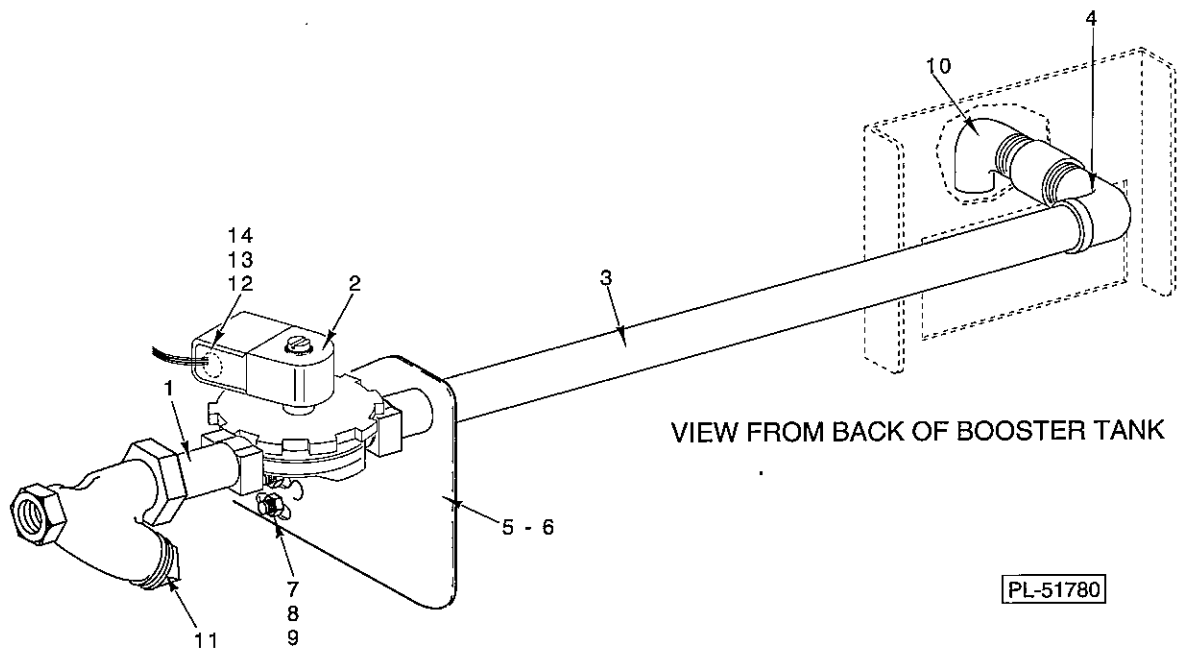


BOOSTER TANK

BOOSTER TANK

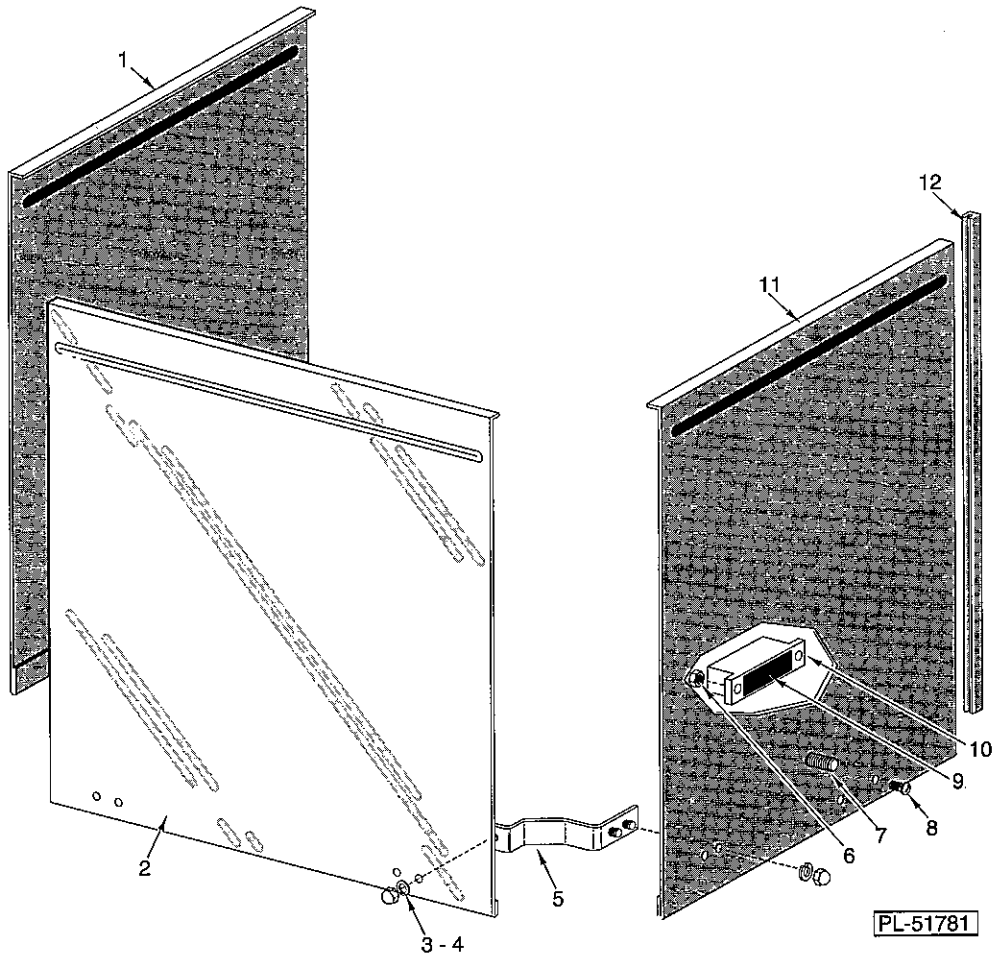
| ILLUS. PL-51779 | PART NO. | NAME OF PART | AMT. |
|--------------------|-------------|--|------|
| 1 | 473999 | Lid - Booster Tank | 1 |
| 2 | 474028 | Lid - Booster Tank (Australia) | 1 |
| 3 | 474001 | Plate - Electric Booster | 2 |
| 4 | 474003 | Plate - Cover (Use 1 W/7KW or 2 W/14KW) | AR |
| 5 | 812349-1 | Heating Element (240 V., 7000 Watts) | AR |
| 6 | 812349-2 | Heating Element (208 V., 7000 Watts) | AR |
| 7 | 812349-4 | Element - Booster Heater (380/415/50/60/3) | AR |
| 8 | 474327 | Tank Booster (Electric)(Australia) | 1 |
| 9 | 473993 | Tank - Booster | 1 |
| 10 | 67500-6 | "O" Ring | 1 |
| 11 | NS-11-18 | Mach. Nut 10-24 Hex | 2 |
| 12 | WL-6-7 | Lockwasher 10 Medium | 2 |
| 13 | WS-23-34 | Washer | 2 |
| 14 | 122674 | Float Assy. | AR |
| 15 | 473998 | Clip - Float (Use 2 W/7KW or 14 KW, or 1 W/Break Tank) | AR |
| 16 | 474098-3 | Switch - Interlock (Use 2 W/7KW or 1 W/Break Tank) | AR |
| 17 | NS-31-50 | Stop Nut 6-32 Hex (SST) | AR |
| 18 | WS-23-21 | Washer | AR |
| 19 | 122575-2 | Wire Tie | 1 |
| 20 | NS-47-94 | Nut-Lock Special 3/16 | 1 |
| 21 | 473988 | Thermometer | 1 |
| 22 | 545674 | Hose (9") (Cut to Length) | AR |
| 23 | 521687 | Clamp - Hose | 2 |
| 24 | FE-24-88 | Locknut 1/2 | 2 |
| 25 | FE-22-84 | Connector - Strain Relief | 2 |
| 26 | FE-8-10 | 1/2 Gasket Assy. | 2 |
| 27 | WL-6-17 | Lockwasher 1/4 Medium | 4 |
| 28 | WS-17-6 | Washer | 4 |
| 29 | WL-6-17 | Lockwasher 1/4 Medium | 4 |
| 30 | NS-15-1 | Full Nut 1/4-20 Hex | 4 |
| 31 | 474000 | Box - Electric Heater | 1 |
| 32 | 329009 | Gasket - Heater Mounting | 2 |
| 33 | NS-15-1 | Full Nut 1/4-20 Hex | 4 |

AM2 DISHWASHER REPLACEMENT PARTS



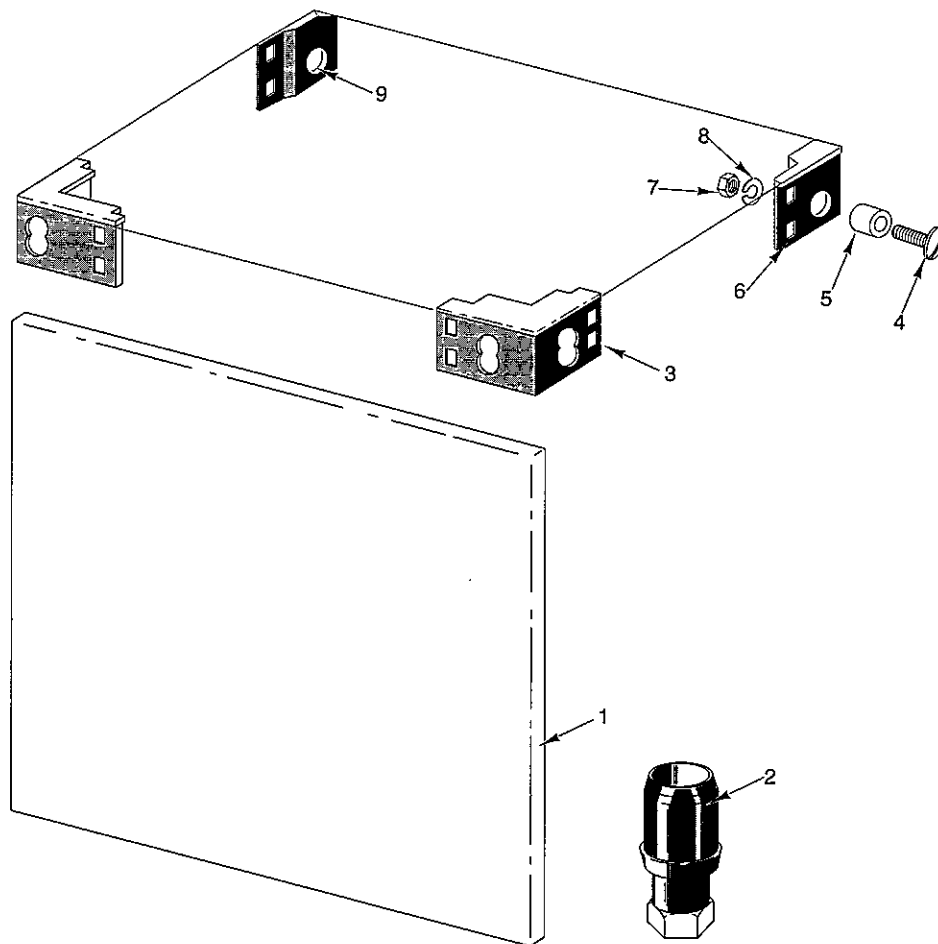
OUTSIDE FILL PIPING

| ILLUS. PL-51780 | PART NO. | NAME OF PART | AMT. |
|--------------------|-------------|---|------|
| 1 | FP-84-99 | Pipe 3/4 x 1 1/4 | 1 |
| 2 | 271002-1 | Valve - Solenoid (3/4, 110-120 V.) | 1 |
| 3 | FP-42-59 | Pipe 3/4 x 20 1/2 | 1 |
| 4 | FP-15-24 | Street L - Pipe 3/4 x 90 Deg. Brass | 1 |
| 5 | 474033 | Bracket - Fill Piping (Australia) | 1 |
| 6 | 474002 | Bracket - Fill Piping | 1 |
| 7 | NS-11-18 | Mach. Nut 10-24 Hex | 2 |
| 8 | WS-23-34 | Washer | 2 |
| 9 | WL-6-7 | Lockwasher 10 Medium | 2 |
| 10 | FP-15-24 | Street L - Pipe 3/4 x 90 Deg. Brass | 1 |
| 11 | 186922 | Strainer - Line 3/4 Brass | 1 |
| 12 | FE-22-84 | Connector - Strain Relief | 1 |
| 13 | FE-8-10 | 1/2 Gasket Assy. | 1 |
| 14 | FE-24-88 | Locknut 1/2 | 1 |



DOOR

| ILLUS. PL-51781 | PART NO. | NAME OF PART | AMT. |
|--------------------|-------------|--|------|
| 1 | 474078 | Door (L.H.) | 1 |
| 2 | 436285 | Door Assy. (Front) | 1 |
| 3 | NS-25-9 | Nut $\frac{5}{16}$ -18 Crown | 8 |
| 4 | WL-6-23 | Lockwasher $\frac{5}{16}$ Medium SST | 8 |
| 5 | 185057 | Bracket - Door Lift | 2 |
| 6 | NS-31-50 | Stop Nut 6-32 Hex (SST) | 2 |
| 7 | SC-41-17 | Cap Screw $\frac{5}{16}$ -18 x 1 $\frac{1}{2}$ Hex Hd. SST | 2 |
| 8 | SC-115-26 | Mach. Screw 6-32 x $\frac{5}{16}$ Pan Hd. | 2 |
| 9 | 290160 | Magnet | 1 |
| 10 | 290159 | Retainer - Magnet | 1 |
| 11 | 474077 | Door (R.H.) | 1 |
| 12 | 112378-23 | Guide - Door | 6 |

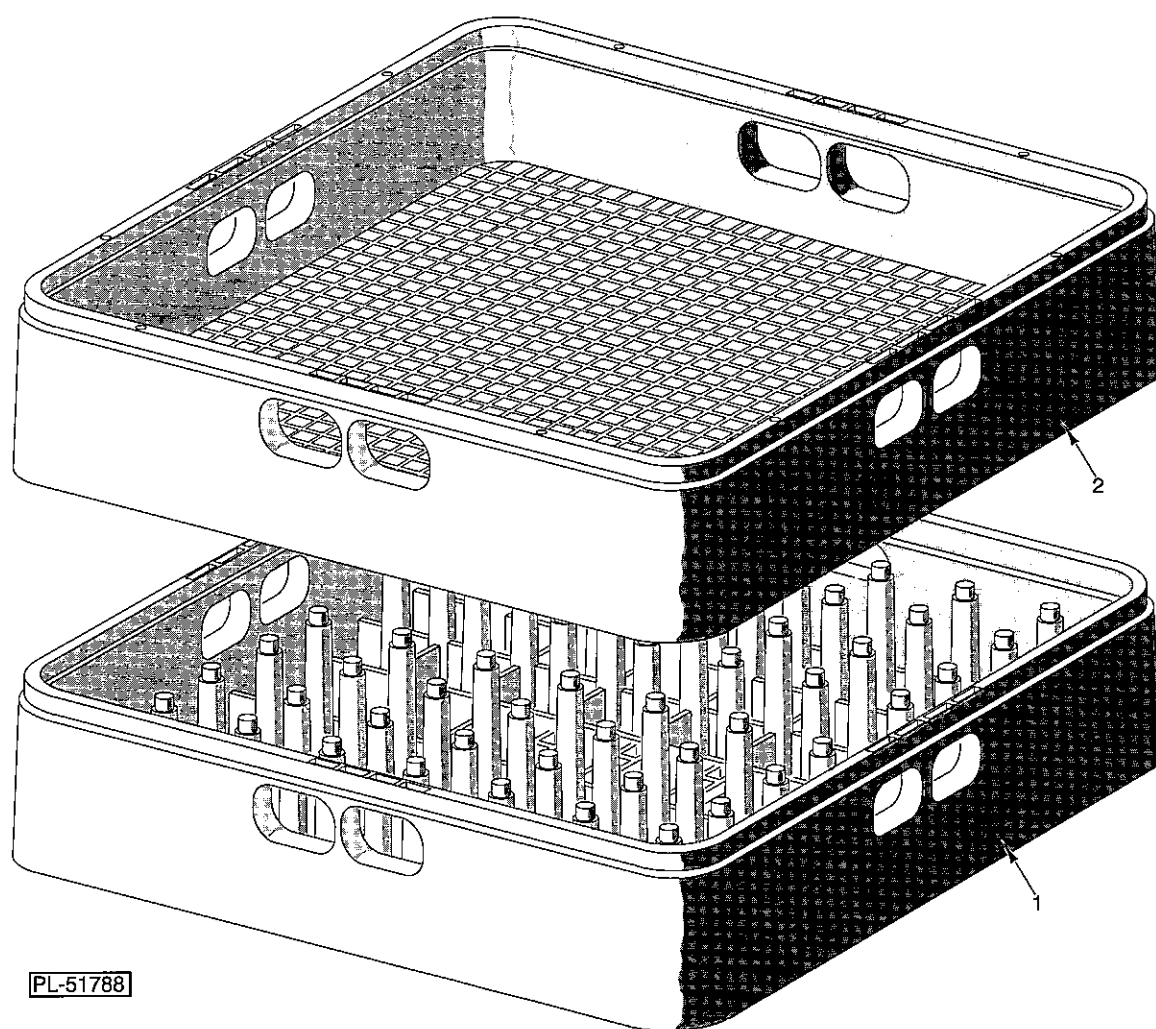


PL-51787

PANEL

PANEL

| ILLUS. PL-51787 | PART NO. | NAME OF PART | AMT. |
|--------------------|-------------|---|------|
| 1 | 473977 | Panel - Trim (SST)..... | 1 |
| 2 | 288946 | Foot - Adjustable (1 5/8)(SST)..... | 4 |
| 3 | 119081 | Insert - Tank Corner (Front)..... | 2 |
| 4 | SC-53-21 | Mach. Screw 5/16 x 1 1/4 Truss Hd. SST..... | 6 |
| 5 | 119047 | Spacer - Tank & Chamber..... | 6 |
| 6 | 119083 | Insert - Tank Corner (Right Rear)..... | 1 |
| 7 | WL-6-23 | Lockwasher 5/16 Medium SST..... | 10 |
| 8 | NS-15-11 | Full Nut 5/16-18 Hex..... | 10 |
| 9 | 119082 | Insert - Tank Corner (Left Rear)..... | 1 |



DISH RACKS

DISH RACKS

| ILLUS. PL-51788 | PART NO. | NAME OF PART | AMT. |
|--------------------|-------------|-------------------------------------|------|
| 1 | 315191 | Rack - Peg (Packaged) | 1 |
| 2 | 315193 | Rack - Combination (Packaged) | 1 |

