

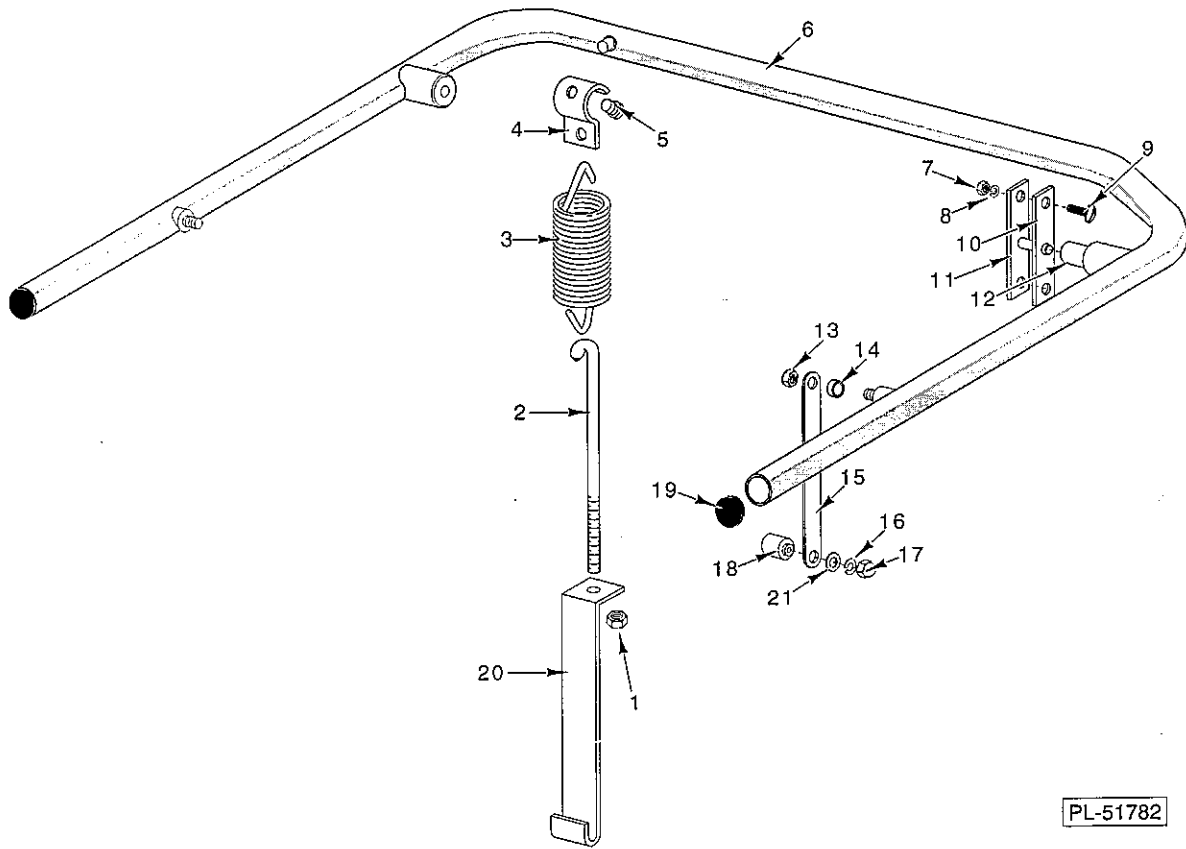


CATALOG OF  
REPLACEMENT PARTS

AM2 DISHWASHERS  
ML-020499 AM2

*MADE IN CHINA*

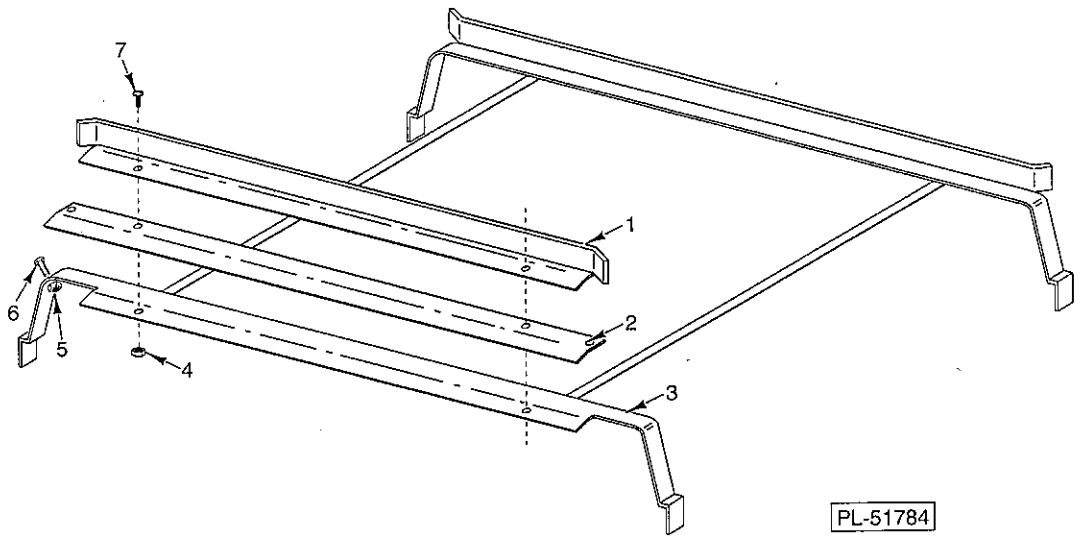
HOBART INTERNATIONAL 701 RIDGE AVENUE TROY, OHIO 45374-0001



PL-51782

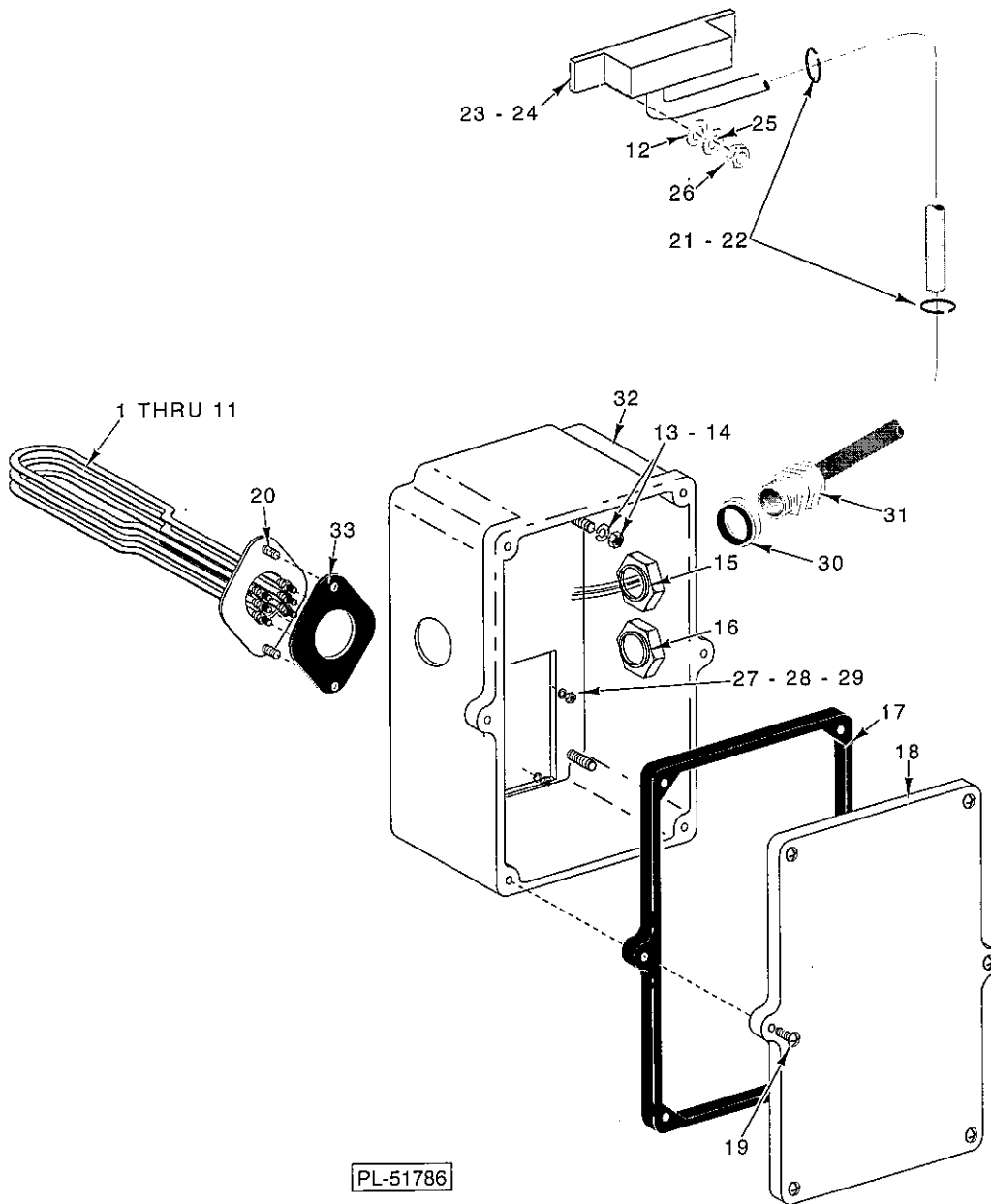
DOOR LIFT

ILLUS. PL-51782	PART NO.	NAME OF PART	AMT.
1	NS-15-11	Full Nut $\frac{5}{16}$ -18 Hex	2
2	186334-2	Hook - Spring	1
3	119079-2	Spring - Counterbalance	1
4	79008	Hanger - Spring	1
5	119055	Button - Bearing	2
6	475200-1	Door Lift Assy.	1
7	NS-15-11	Full Nut $\frac{5}{16}$ -18 Hex	4
8	WL-6-23	Lockwasher $\frac{5}{16}$ Medium SST	4
9	SC-53-16	Mach. Screw $\frac{5}{16}$ -18 x $\frac{5}{8}$ Truss HD.	4
10	119053	Gasket - Door Lift	2
11	742096	Bearing Bracket & Pin Assy.	2
12	119104	Bushing - Door Lift Pin	2
13	NS-32-35	Stop Nut $\frac{5}{16}$ -18 "Flexloc"	2
14	74068	Spacer - Door Link	2
15	119011	Link - Door	2
16	WL-6-23	Lockwasher $\frac{5}{16}$ Medium SST	2
17	NS-25-9	Nut $\frac{5}{16}$ -18 Crown	2
18	119046	Pin - Door Lift	2
19	474831	Plug - Handle	2
20	742028	Bracket - Spring	1
21	WS-5-32	Washer	2



TRACKS

ILLUS. PL-51784	PART NO.	NAME OF PART	AMT.
1	742018	Side - Rack Track .....	1
2	742019	Guard - Door Splash.....	1
3	742086	Track Weldment .....	1
4	NS-31-15	Stop Nut - Special 10-24 Hex (SST) .....	2
5	NS-31-15	Stop Nut - Special 10-24 Hex (SST) .....	2
6	SC-53-2	Mach. Screw 10-24 x 1/2 Truss Hd. SST .....	2
7	SG-53-2	Mach. Screw 10-24 x 1/2 Truss Hd. SST .....	2

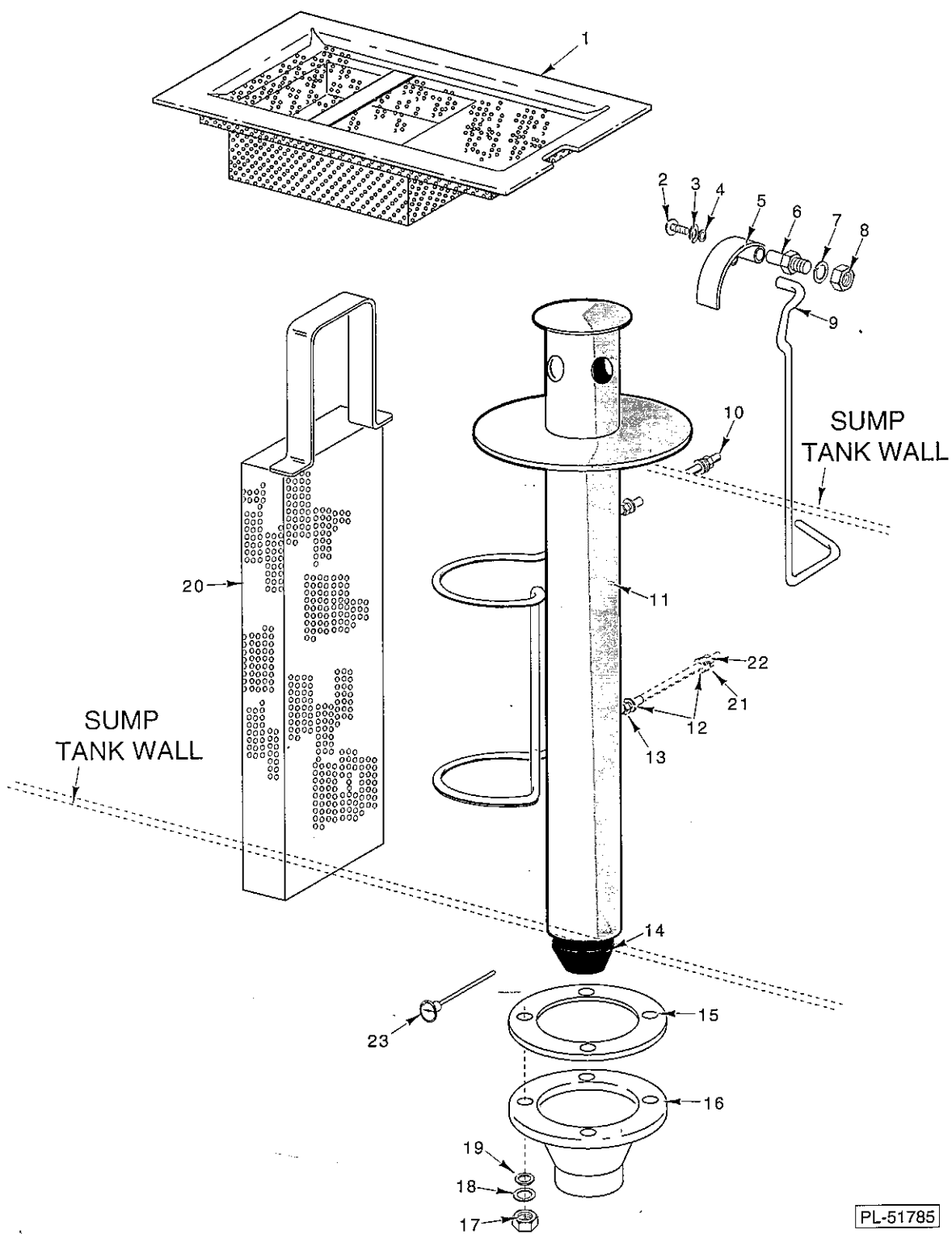


PL-51786

ELECTRIC HEAT BOX AND ELEMENT

## ELECTRIC HEAT BOX AND ELEMENT

ILLUS. PL-51786	PART NO.	NAME OF PART	AMT.
1	473761-1	Heater - Sump (100/1) (2000 Watts) .....	1
2	473761-2	Heater - Sump (200-208/3) (2000 Watts) .....	1
3	473761-3	Heater - Sump (220-240/3) (2000 Watts) .....	1
4	473761-12	Heater - Sump (380-415/3) (500 Watts) .....	1
5	473761-5	Heater - Sump (220-240/1) (2000 Watts) .....	1
6	473761-6	Heater - Sump (380-415/3) (2000 Watts) .....	1
7	473761-7	Heater - Sump (100/1) (500 Watts) .....	1
8	473761-8	Heater - Sump (200-208/3) (500 Watts) .....	1
9	473761-9	Heater - Sump (220-240/3) (500 Watts) .....	1
10	473761-10	Heater - Sump (200-208/1) (500 Watts) .....	1
11	473761-11	Heater - Sump (220-240/1) (500 Watts) .....	1
12	WS-23-21	Washer .....	2
13	WL-6-17	Lockwasher 1/4 Medium .....	4
14	NS-15-1	Full Nut 1/4-20 Hex .....	4
15	FE-24-88	Locknut 1/2 .....	1
16	FE-24-88	Locknut 1/2 .....	1
17	112005	Gasket (Lid) .....	1
18	288486-2	Lid & Gasket Assy. (Incls item 17) .....	1
19	SD-12-20	Self-Tapping Screw 8-32 x 1/2 Phil. Truss Hd., Type T .....	6
20	SC-41-12	Cap Screw 5/16-18 x 7/8 Hex Hd. ....	2
21	122577-2	Wire Tie .....	2
22	NS-47-94	Nut-Lock Special 3/16 .....	2
23	474098-2	Door Interlock Assy. ....	1
24	474098-3	Switch - Interlock (W/Electric Booster) .....	1
25	WL-6-42	Lockwasher 6 Medium .....	2
26	NS-11-7	Mach. Nut 6-32 Hex .....	2
27	WS-17-8	Washer .....	2
28	WL-6-23	Lockwasher 5/16 Medium SST .....	2
29	NS-15-11	Full Nut 5/16-18 Hex .....	2
30	FE-8-10	1/2 Gasket Assy. ....	2
31	FE-22-84	Connector - Strain Relief .....	2
32	473976	Box - Electric Sump Heat .....	1
33	293598	Gasket - Heater Mounting .....	1

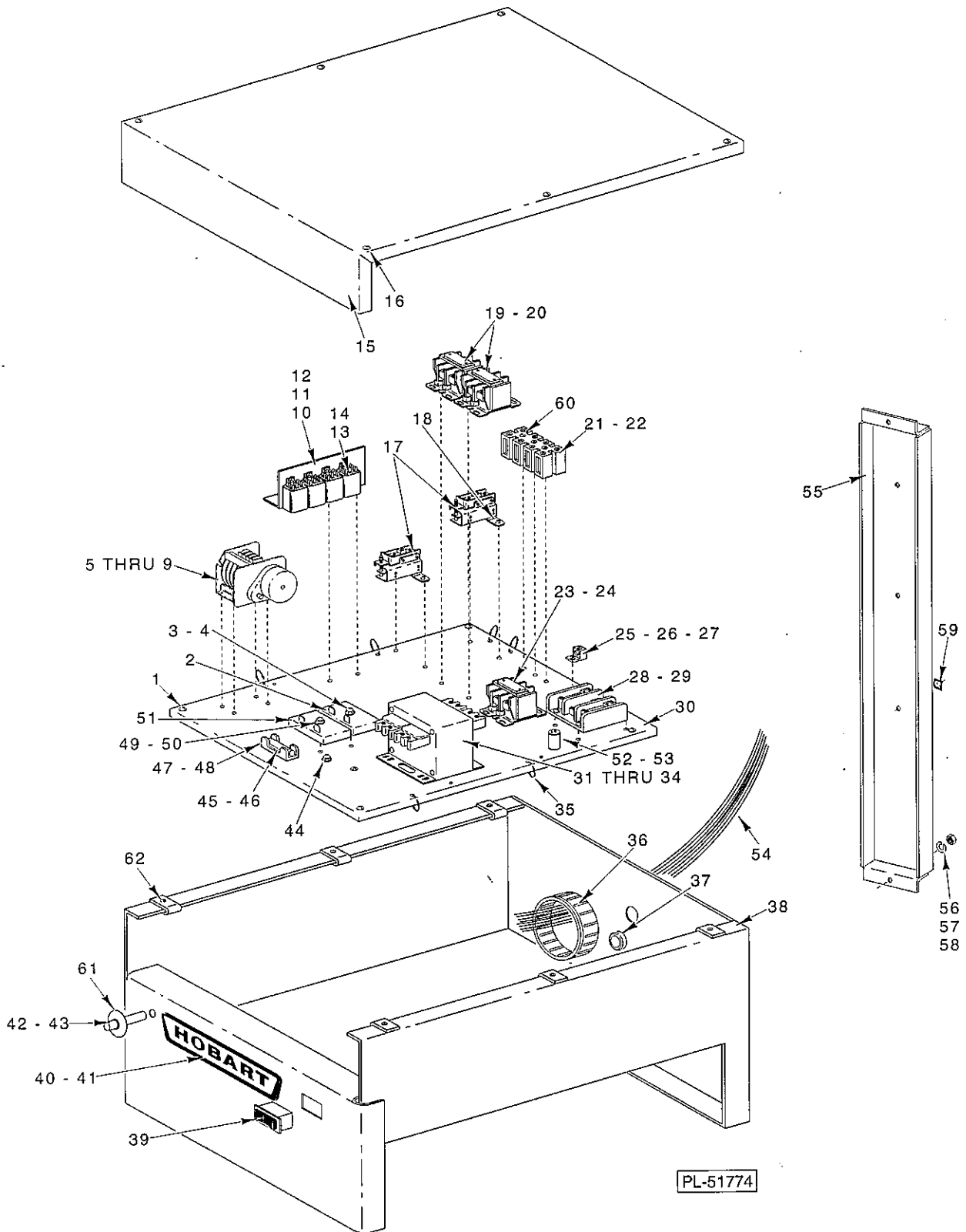


PL-51785

STRAINERS AND DRAIN UNIT

STRAINERS AND DRAIN UNIT

ILLUS. PL-51785	PART NO.	NAME OF PART	AMT.
		Strainer Assy. ....	1
1	742077	Mach. Screw 10-24 x 3/8 Rd. Hd. SST .....	1
2	SC-21-22	Lockwasher 10 Medium.....	1
3	WL-6-7	Washer .....	1
4	WS-23-34	Drain Lever Assy. ....	1
5	742095	Axle-Drain Lever .....	1
6	119116	Lockwasher 1/4 Medium .....	1
7	WL-6-17	Full Nut 1/4-20 Hex .....	1
8	NS-15-1	Rod-Overflow Lift .....	1
9	119119	Retainer - Tube Overflow.....	1
10	473982	Overflow Tube Assy. ....	4
11	742082	Washer .....	2
12	WS-17-6	Jam Nut 1/4-20 Hex .....	1
13	NS-18-1	Stopper - Drain .....	1
14	473689	Gasket - Drain .....	1
15	473983	Sump - Drain .....	4
16	473759	Full Nut 1/4-20 Hex .....	4
17	NS-15-1	Lockwasher 1/4 Medium .....	4
18	WL-6-17	Washer .....	1
19	WS-17-6	Intake Pump Strainer Assy. ....	2
20	742087	Lockwasher 1/4 Medium .....	2
21	WL-6-17	Jam Nut 1/4-20 Hex .....	2
22	NS-18-1	Thermometer .....	1
23	473988		

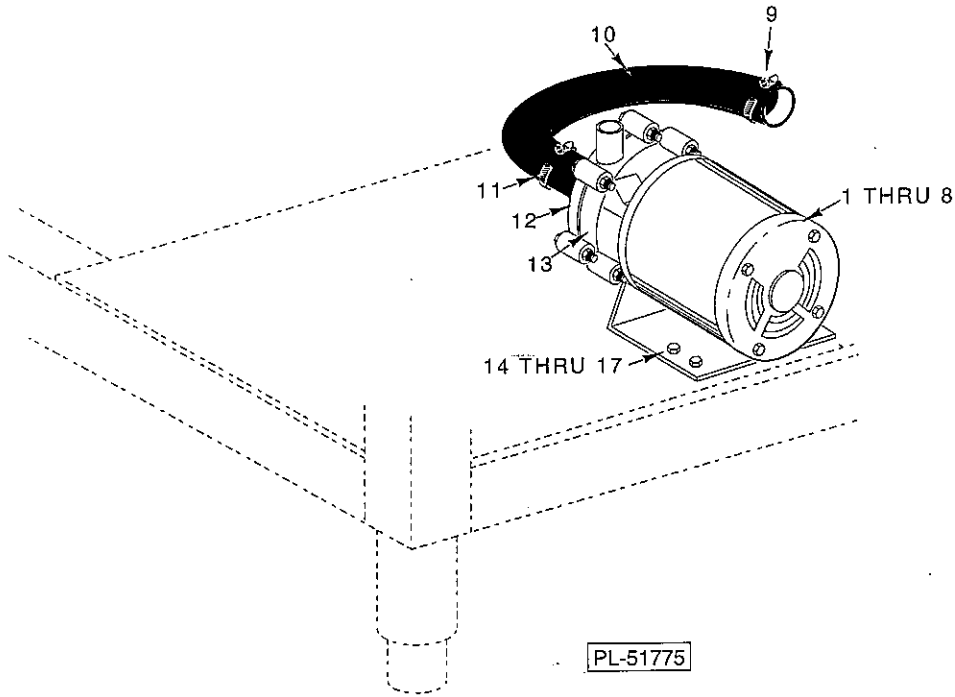


CONTROL BOX ASSY.



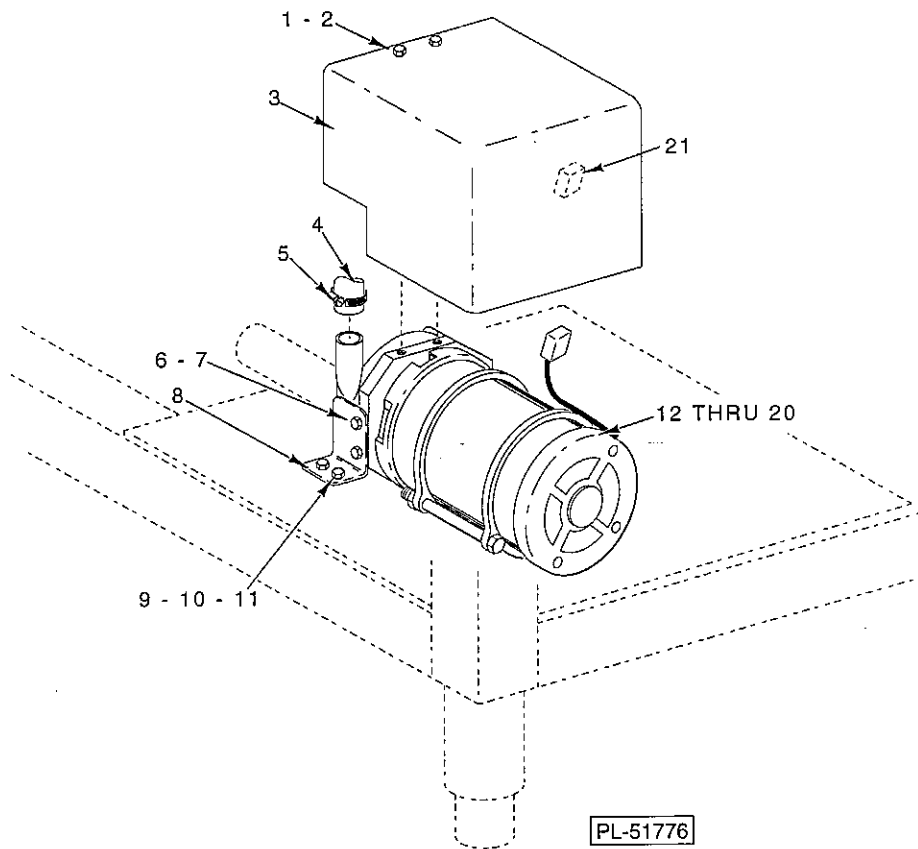
## CONTROL BOX ASSY.

ILLUS. PL-51774	PART NO.	NAME OF PART	AMT.
		Mach. Screw 10-24 x 3/8 Truss Hd, Slotted.....	4
1	SC-53-5	Relay Time Delay (5 Sec.) .....	1
2	87714-31-2	Self-Tapping Screw 1/4-20 x 1 1/4 Slotted Hex Washer Hd., Type T .....	1
3	SD-36-13	Lockwasher 1/4 External Shakeproof .....	1
4	WL-7-15	Cam Timer Assy. (120V., 60HZ., 60 Sec.) .....	1
5	474071-1	Cam Timer Assy. (120V., 50HZ., 60 Sec.) .....	1
6	474071-2	Cam Timer Assy. (120V., 60HZ., 90 Sec.) .....	1
7	474071-3	Cam Timer Assy. (120V., 50HZ., 90 Sec.) .....	1
8	474071-4	Self-Tapping Screw 8-18 x 3/8 Phil. Bind Hd., Type B .....	4
9	SD-8-18	Bracket - Relay Mtg. ....	1
10	742034	Self-Tapping Screw 10 x 3/8 Phil Bind Hd., Type B .....	2
11	SD-8-25	Lockwasher 10 External Shakeproof (SST) .....	2
12	WL-14-7	Relay (3 P. D. T.) (10A., 120 V. A. C.) .....	4
13	87714-20-2	Self-Tapping Screw 6-20 x 1/2 Phil Pan Hd., Type B .....	8
14	SD-19-29	Lid - Box Control .....	1
15	742032	Mach. Screw 10-24 x 3/8 Truss Hd, Slotted.....	6
16	SC-53-5	Thermostat - Tank Heat .....	2
17	294681-021-4	Self-Tapping Screw 10 x 3/8 Phil Bind Hd., Type B .....	4
18	SD-8-25	Contact - 30 Amp 3 Pole .....	3
19	87713-40-2	Self-Tapping Screw 10 x 3/8 Phil Bind Hd., Type B .....	6
20	SD-8-25	Block - Terminal (Over 250 Volts) .....	1
21	294325-13-2	Block - Terminal (Under 250 Volts) .....	1
22	294325-13-4	Contact - 40 Amp 3 Pole .....	1
23	87713-41-2	Self-Tapping Screw 10 x 3/8 Phil Bind Hd., Type B .....	2
24	SD-8-25	Lug - Grounding .....	1
25	118544-2	Self-Tapping Screw 1/4-20 x 3/8 Phil. Pan Hd., Type TT .....	1
26	SD-35-77	Lockwasher 1/4 External Shakeproof .....	1
27	WL-7-15	Terminal Block .....	1
28	119031	Self-Tapping Screw 10 x 3/4 Rd. Hd., Type B .....	4
29	SD-8-1	Plate - Base .....	1
30	742033	Transformer (50VA, 3PH., W/Elec. Booster; Hi-Volt W/O Booster) .....	1
31	294500-28	Transformer (300VA, 50/60Hz.) (High Voltage) .....	1
32	294500-24-2	Self-Tapping Screw 10 x 3/8 Phil Bind Hd., Type B .....	4
33	SD-8-25	Lockwasher 10 External Shakeproof (SST) .....	4
34	WL-14-7	Cable Tie .....	6
35	113703	Bushing - Electrical 2 1/2 3/4 I. D. ....	1
36	FE-24-13	Grommet.....	1
37	274947	Control Box Weldment .....	1
38	742078	Switch - Rocker (DPDT) .....	1
39	87711-254-2	Nameplate - Hobart .....	1
40	280224	Clip - Nameplate .....	2
41	206177	Light - Pilot .....	1
42	294700-4-6	Terminal .....	2
43	TW-1-65	Self-Tapping Screw 10 x 3/8 Phil Bind Hd., Type B .....	1
44	SD-8-25	Fuse 250V 1/2 Amp .....	1
45	FE-22-28	Fuse 3.2 Amps .....	1
46	FE-21-19	Block - Fuse .....	1
47	294436-3	Self-Tapping Screw 6-20 x 1/2 Phil Pan Hd., Type B .....	1
48	SD-19-29	Self-Tapping Screw 1/4-20 x 1 1/4 Slotted Hex Washer Hd., Type T .....	1
49	SD-36-13	Lockwasher 1/4 External Shakeproof .....	1
50	WL-7-15	Relay-Time Delay (15 Sec.) .....	1
51	87714-31-3	Capacitor - Motor Starter (22 Micro) (100-120/1) (Old rinse system only) .....	1
52	473936-1	Capacitor - Motor Starter (5 Micro) (200-240/1) (Old rinse system only) .....	1
53	473936-2	Harness - Base Plate .....	1
54	748090-1	Chase - Wireway .....	1
55	742035	Washer .....	4
56	WS-22-1	Lockwasher 10 Medium .....	4
57	WL-6-7	Mach. Nut 10-24 Hex .....	1
58	NS-11-18	Nut-Lock Special 3/16 .....	1
59	NS-47-94	Self-Tapping Screw 6-20 x 1/2 Phil Pan Hd., Type B .....	2
60	SD-19-29	Label - Cycle Light .....	1
61	473705	Speed Nut 10 - 24 .....	6
62	74348		



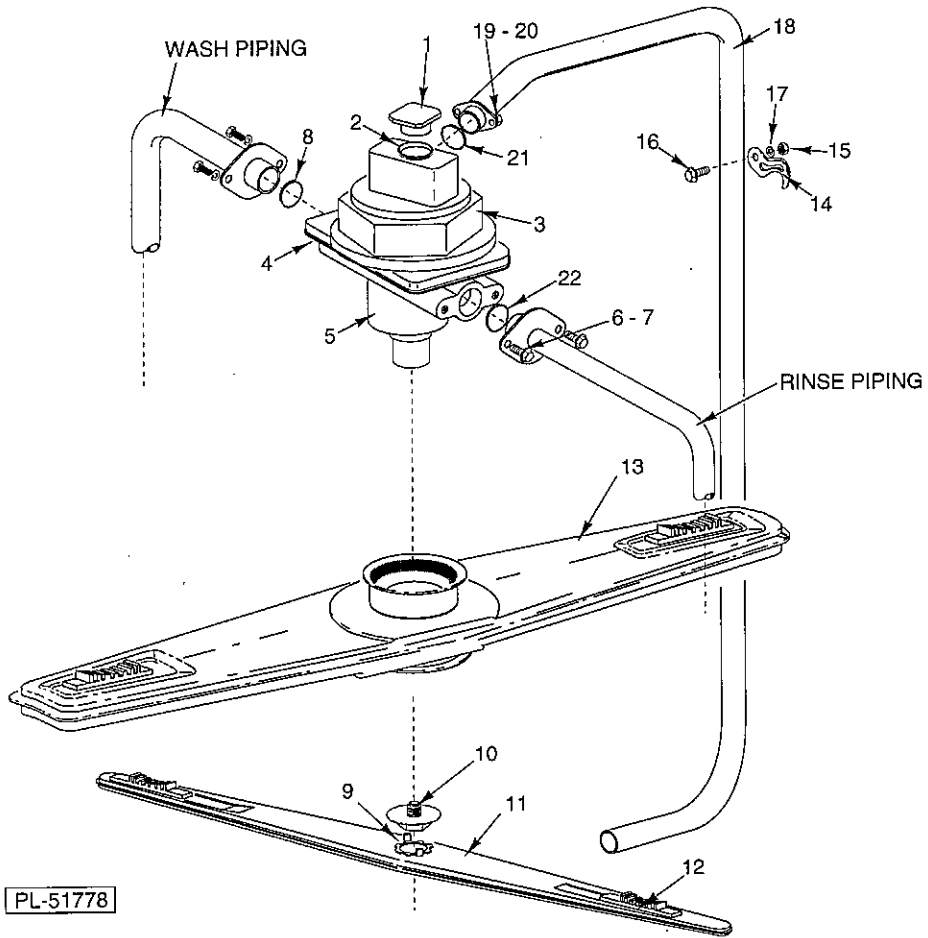
PUMP & MOTOR

ILLUS. PL-51775	PART NO.	NAME OF PART	AMT.
1	473661-1	Pump / Motor Assy. (380/60/3)	1
2	329240-10	Motor Assy. (380/60/3)	1
3	473661-2	Pump / Motor Assy. (220-230/460/60/3) (190/380-415/50/3)	1
4	329240-11	Motor Assy. (220-230/460/60/3) (190/380-415/50/3)	1
5	473661-3	Pump / Motor Assy. (200/60/50/3)	1
6	329240-12	Motor Assy. (200/60/50/3)	1
7	474089-1	Pump / Motor Assy. (115/230/50/60/1)	1
8	329240-8	Motor Assy. (115/230/50/60/1)	1
9	538412	Clamp - Hose # 24	1
10	473974	Hose - Wash Pump	1
11	538412	Clamp - Hose # 24	1
12	329240-2	Support - Head (Pump - Rear)	1
13	329240-3	Casing (Pump Front)	1
14	SC-41-12	Cap Screw $\frac{5}{16}$ -18 x $\frac{7}{8}$ Hex Hd.	4
15	NS-15-11	Full Nut $\frac{5}{16}$ -18 Hex	4
16	WL-6-23	Lockwasher $\frac{5}{16}$ Medium SST	4
17	WS-17-8	Washer	8
	329240-4	Shaft Seal Kit (Incls. Seal, O Ring & Shims) (Not Shown)	1
	329240-9	Impeller Kit (1Ph) (Incls. Impeller, Casting, O Rings & Hwd.) (Not Shown)	1
	329240-13	Impeller Kit (3Ph) (Incls. Impeller, casting, oRings & Hwd.) (Not Shown)	1
	329240-6	Plug Kit (Incls. Nylon Plug & O Ring) (Not Shown)	1
	329240-7	Shim Kit (Not Shown)	1



RINSE PUMP

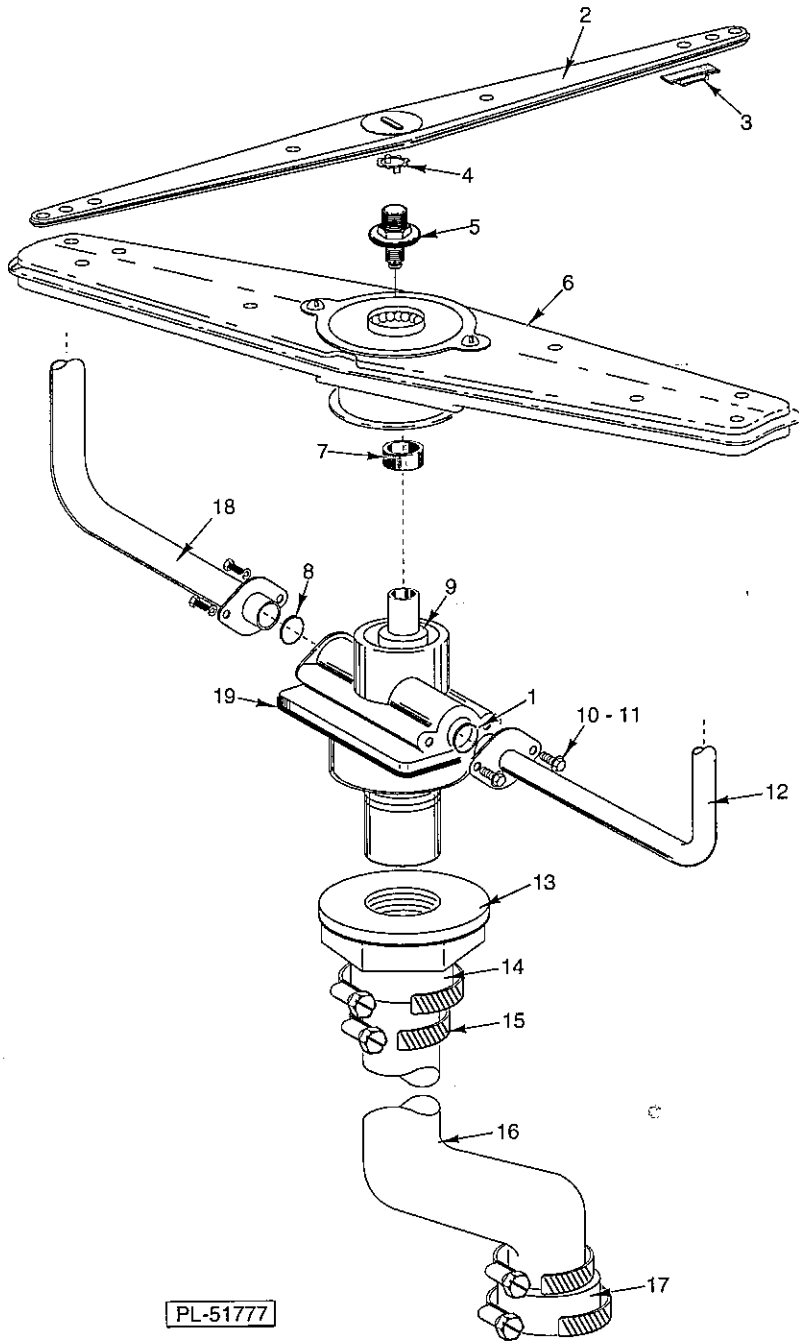
ILLUS. PL-51776	PART NO.	NAME OF PART	AMT.
1	SC-118-47	Cap Screw M6 x1.0 x16 MM Hex Hd. ....	2
2	WL-6-17	Lockwasher 1/4 Medium .....	2
3	742084	Cover-Pump .....	1
4	545674	Hose(9") (Cut to Length) .....	A R
5	521687	Clamp - Hose .....	2
6	SC-118-47	Cap Screw M6 x1.0 x16 MM Hex Hd. ....	2
7	WL-6-17	Lockwasher 1/4 Medium .....	2
8	742058	Bracket-Rinse Pump .....	1
9	SC-41-10	Cap Screw 5/16-18 x 5/8 Hex Hd. ....	1
10	NS-15-11	Full Nut 5/16-18 x 5/8 Hex .....	1
11	WL-6-23	Lockwasher 5/16 Medium SST .....	1
12	474070-1	Pump - Rinse (200-240/50/1) .....	1
13	474089-2	Pump - Rinse (220/60/1) .....	1
14	474070-3	Pump - Rinse (100-120/60/1) .....	1
15	474070-4	Pump - Rinse (100-120/50/1) .....	1
16	474070-5	Pump - Rinse (380-415/50/3) .....	1
17	474070-6	Pump - Rinse (380/60/3) .....	1
18	474070-7	Pump - Rinse (200/50/3) .....	1
19	474070-8	Pump - Rinse (200/60/3) .....	1
20	474070-9	Pump - Rinse (220-240/60/3) .....	1
21	122895	Connector .....	1



UPPER WASH & RINSE ARMS

## UPPER WASH &amp; RINSE ARMS

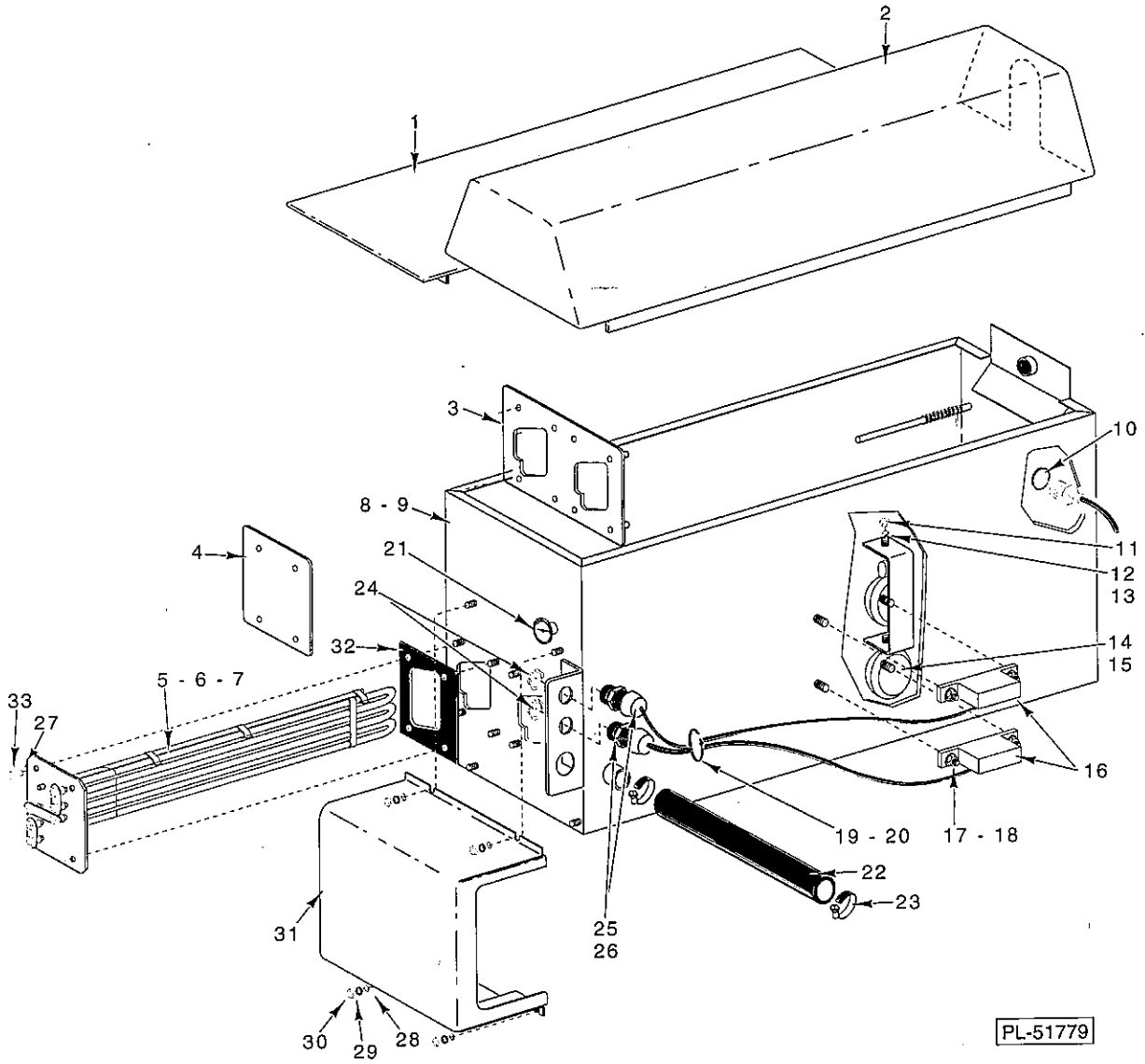
ILLUS. PL-51778	PART NO.	NAME OF PART	AMT.
1	473690	Plug-Manifold.....	1
2	67500-10	"O" Ring.....	1
3	473460	Nut-Manifold.....	1
4	473984	Gasket-Manifold.....	1
5	474677	Shaft/Manifold, Upper Assy.....	1
6	SC-41-50	Cap Screw 1/4-20 x 1/2 Hex Hd.....	4
7	WL-6-17	Lockwasher 1/4 Medium.....	4
8	67500-10	"O" Ring.....	1
9	474225	Ring-Locking.....	1
10	473637	Bearing Assy.-Rinse Arm(Incls. Balls, Inner&Outer Races, Nut&Retaining Ring).....	1
11	474679	Arm-Rinse.....	1
12	474674	Plug-Clean-Out(Sliding) (2 per Arm).....	4
13	474681	Wash Arm Assy. (Incls. Hub, Balls, Retainer & Screws).....	1
14	FE-25-17	Clamp-Electrical 3/4 TS.....	1
15	NS-15-11	Full Nut 5/16-18 Hex.....	1
16	SC-53-16	Mach. Screw 5/16-18 x 5/8 Truss HD.....	1
17	WL-6-23	Lockwasher 5/16 Medium SST.....	1
18	742085	Outside Rinse Piping Assy.....	1
19	SC-41-50	Cap Screw 1/4-20 x 1/2 Hex Hd.....	2
20	WL-6-17	Lockwasher 1/4 Medium.....	2
21	67500-10	"O" Ring.....	1
22	67500-6	"O" Ring.....	1



LOWER WASH & RINSE ARMS

## LOWER WASH &amp; RINSE ARMS

ILLUS. PL-51777	PART NO.	NAME OF PART	AMT.
1	67500-6	"O" Ring.....	1
2	474679	Arm - Rinse .....	1
3	474674	Plug-Clean-Out (Sliding) (2 per Arm) .....	1
4	474225	Ring-Locking .....	1
5	473637	Bearing Assy. Rinse Arm (Incls. Balls, Inner&Outer Race, Nut&Retaining) .....	1
6	474681	Wash Arm Assy. (Incls. Hub, Balls, Retainer & Screws) .....	1
7	286944	Spacer .....	1
8	67500-10	"O" Ring.....	1
9	474678	Shaft/Manifold, Lower Assy. ....	1
10	SC-41-50	Cap Screw 1/4-20 x 1/2 Hex Hd. ....	4
11	WL-6-17	Lockwasher 1/4 Medium .....	4
12	742084	Piping - Rinse .....	1
13	473460	Nut - Manifold .....	1
14	545655	Hose (Cut to 2 3/4" Length) .....	A R
15	538412	Clamp - Hose # 24 .....	4
16	474218	Tube .....	1
17	545655	Hose (Cut to 2 3/4" Length) .....	A R
18	742083	Piping - Wash .....	1
19	473984	Gasket - Manifold.....	1



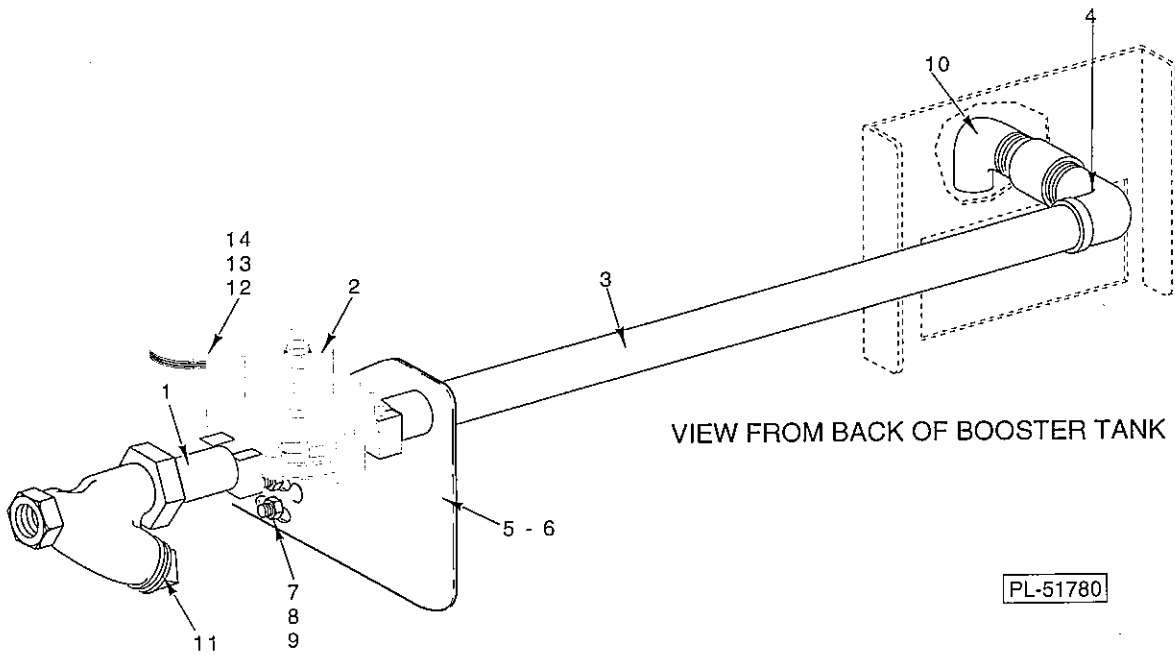
PL-51779

BOOSTER TANK



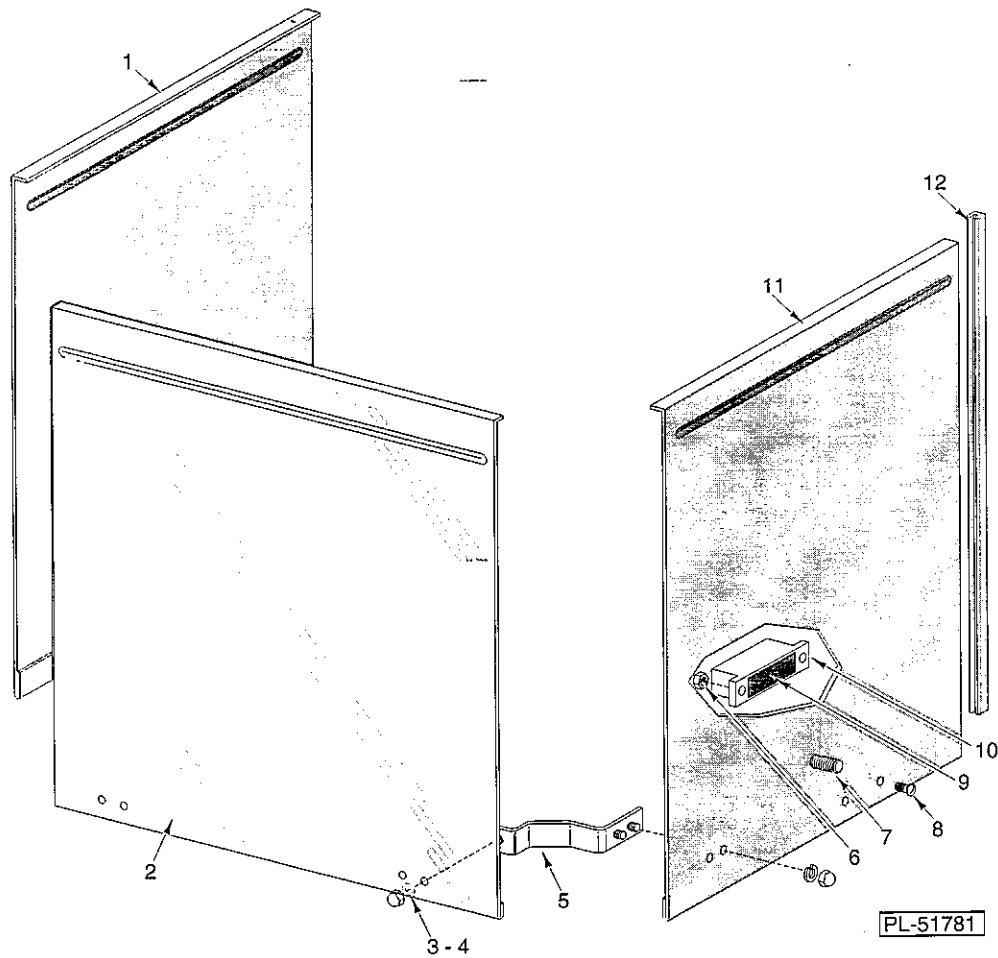
## BOOSTER TANK

ILLUS. PL-51779	PART NO.	NAME OF PART	AMT.
1	742049	Lid - Booster Tank .....	1
2	474028	Lid-Booster Tank (Australia) .....	1
3	742094	Plate - Electric Booster .....	2
4	742056	Plate - Cover (Use 1 W/7KW or 2 W/14KW) .....	AR
5	812349-1	Heating Element (240 V., 7000 Watts) .....	AR
6	812349-2	Heating Element (208 V., 7000 Watts) .....	AR
7	812349-4	Element - Booster Heater (380/415/50/60/3) .....	AR
8	474327	Tank - Booster (Electric) (Australia) .....	1
9	742081	Tank - Booster .....	1
10	67500-6	"O" Ring .....	1
11	NS-11-18	Mach. Nut 10-24 Hex .....	2
12	WL-6-7	Lockwasher 10 Medium .....	2
13	WS-23-34	Washer .....	2
14	122674	Float Assy. ....	AR
15	742091	Clip - Float (Use 2 W/7KW or 14 KW, or 1 W/Break Tank) .....	AR
16	474098-3	Switch - Interlock (Use 2 W/7KW or 1 W/Break Tank) .....	AR
17	NS-31-50	Stop Nut 6-32 Hex (SST) .....	AR
18	WS-23-21	Washer .....	AR
19	122575-2	Wire Tie .....	1
20	NS-47-94	Nut-Lock Special <sup>3</sup> / <sub>16</sub> .....	1
21	473988	Thermometer .....	1
22	748088-1	Hose .....	1
23	538412	Clamp - Hose .....	1
24	FE-24-88	Locknut 1/2 .....	2
25	FE-22-84	Connector - Strain Relief .....	2
26	FE-8-10	1/2 Gasket Assy. ....	2
27	WL-6-17	Lockwasher 1/4 Medium .....	4
28	WS-17-6	Washer .....	4
29	WL-6-17	Lockwasher 1/4 Medium .....	4
30	NS-15-1	Full Nut 1/4-20 Hex .....	4
31	742047	Box - Electric Heater .....	1
32	329009	Gasket - Heater Mounting .....	2
33	NS-15-1	Full Nut 1/4-20 Hex .....	4



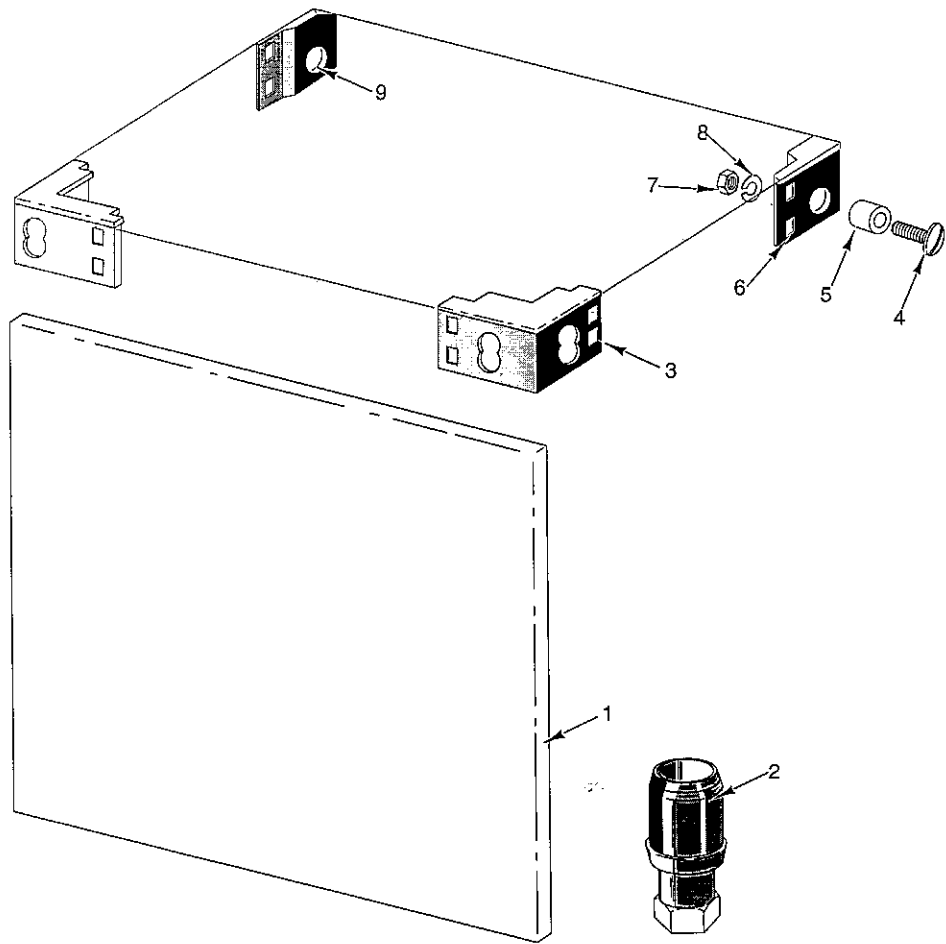
OUTSIDE FILL PIPING

ILLUS. PL-51780	PART NO.	NAME OF PART	AMT.
1	FP-84-99	Pipe $\frac{3}{4}$ x $1\frac{1}{4}$ .....	1
2	271002-1	Valve - Solenoid ( $\frac{3}{4}$ , 110-120 V.) .....	1
3	FP-42-59	Pipe $\frac{3}{4}$ x $20\frac{1}{2}$ .....	1
4	FP-15-24	Street L - Pipe $\frac{3}{4}$ x 90 Deg. Brass .....	1
5	742068	Bracket - Fill Piping (Australia) .....	1
6	742048	Bracket - Fill Piping .....	1
7	NS-11-18	Mach. Nut 10-24 Hex .....	2
8	WS-23-34	Washer .....	2
9	WL-6-7	Lockwasher 10 Medium .....	2
10	FP-15-24	Street L - Pipe $\frac{3}{4}$ x 90 Deg. Brass .....	1
11	186922	Strainer - Line $\frac{3}{4}$ Brass .....	1
12	FE-22-84	Connector - Strain Relief .....	1
13	FE-8-10	$\frac{1}{2}$ Gasket Assy. ....	1
14	FE-24-88	Locknut $\frac{1}{2}$ .....	1



DOOR

ILLUS. PL-51781	PART NO.	NAME OF PART	AMT.
1	742025	Door (L.H.) .....	1
2	742023	Door Assy. (Front) .....	1
3	NS-25-9	Nut $\frac{5}{16}$ -18 Crown .....	8
4	WL-6-23	Lockwasher $\frac{5}{16}$ Medium SST .....	8
5	742092	Bracket-Door Lift .....	2
6	NS-31-50	Stop Nut 6-32 Hex (SST) .....	2
7	SC-41-17	Cap Screw $\frac{5}{16}$ -18 x $1\frac{1}{2}$ Hex Hd. SST .....	2
8	SC-115-26	Mach. Screw 6-32 x $\frac{5}{16}$ Pan Hd. ....	2
9	290160	Magnet .....	1
10	742026	Retainer - Magnet .....	1
11	742024	Door (R.H.) .....	1
12	112378-23	Guide - Door .....	6

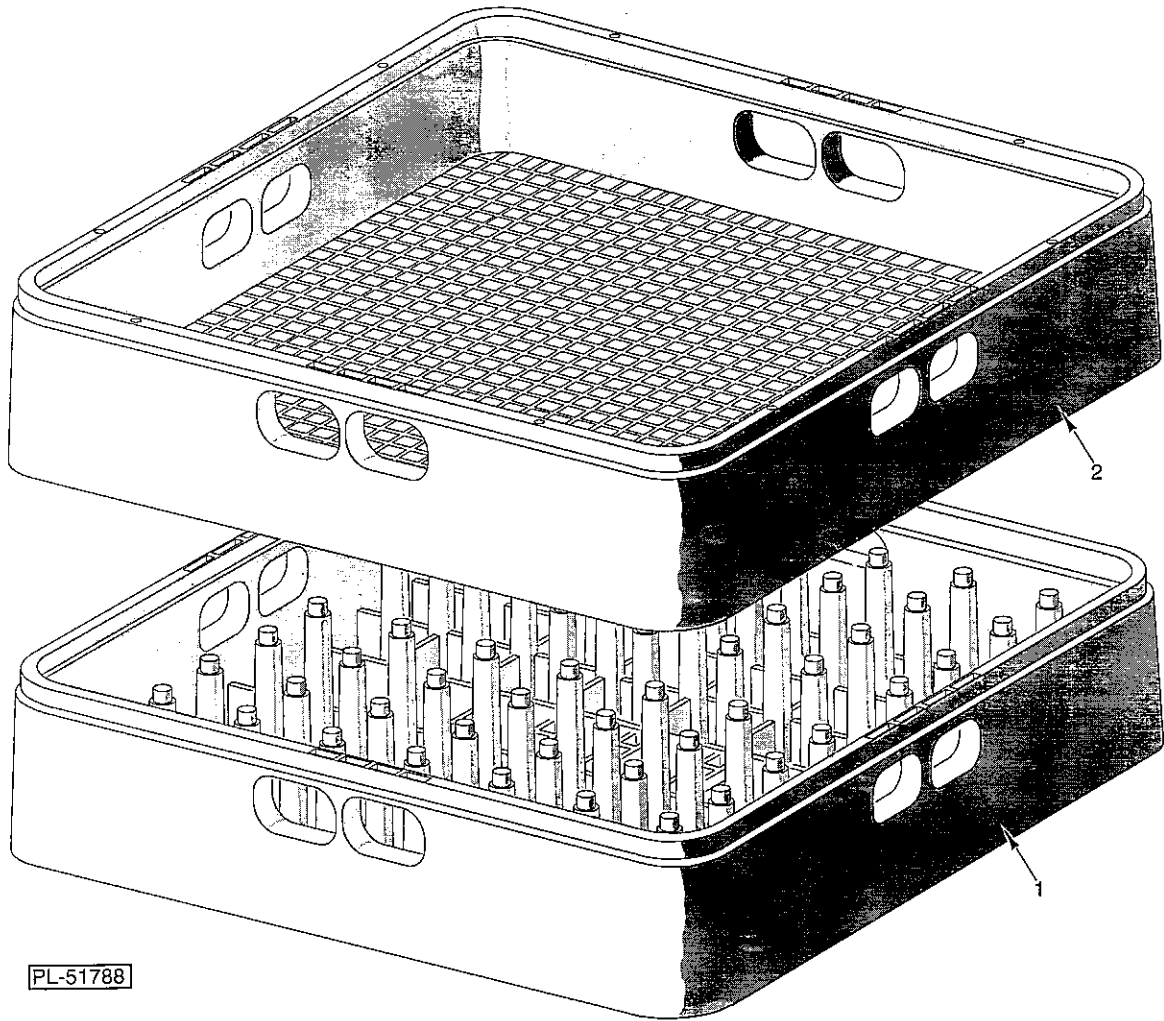


PL-51787

PANEL

## PANEL

ILLUS. PL-51787	PART NO.	NAME OF PART	AMT.
1	742041	Panel - Trim (SST) .....	1
2	288946	Foot - Adjustable (1 5/8) (SST) .....	4
3	119081	Insert - Tank Corner (Front) .....	2
4	SC-53-21	Mach. Screw 5/16 x 1 1/4 Truss Hd. SST .....	6
5	119047	Spacer - Tank & Chamber .....	6
6	119083	Insert - Tank Corner (Right Rear) .....	1
7	WL-6-23	Lockwasher 5/16 Medium SST .....	10
8	NS-15-11	Full Nut 5/16-18 Hex .....	10
9	119082	Insert - Tank Corner (Left Rear) .....	1



DISH RACKS

DISH RACKS

ILLUS. PL-51788	PART NO.	NAME OF PART	AMT.
1	315191	Rack - Peg (Packaged) .....	1
2	315193	Rack - Combination (Packaged) .....	1

