

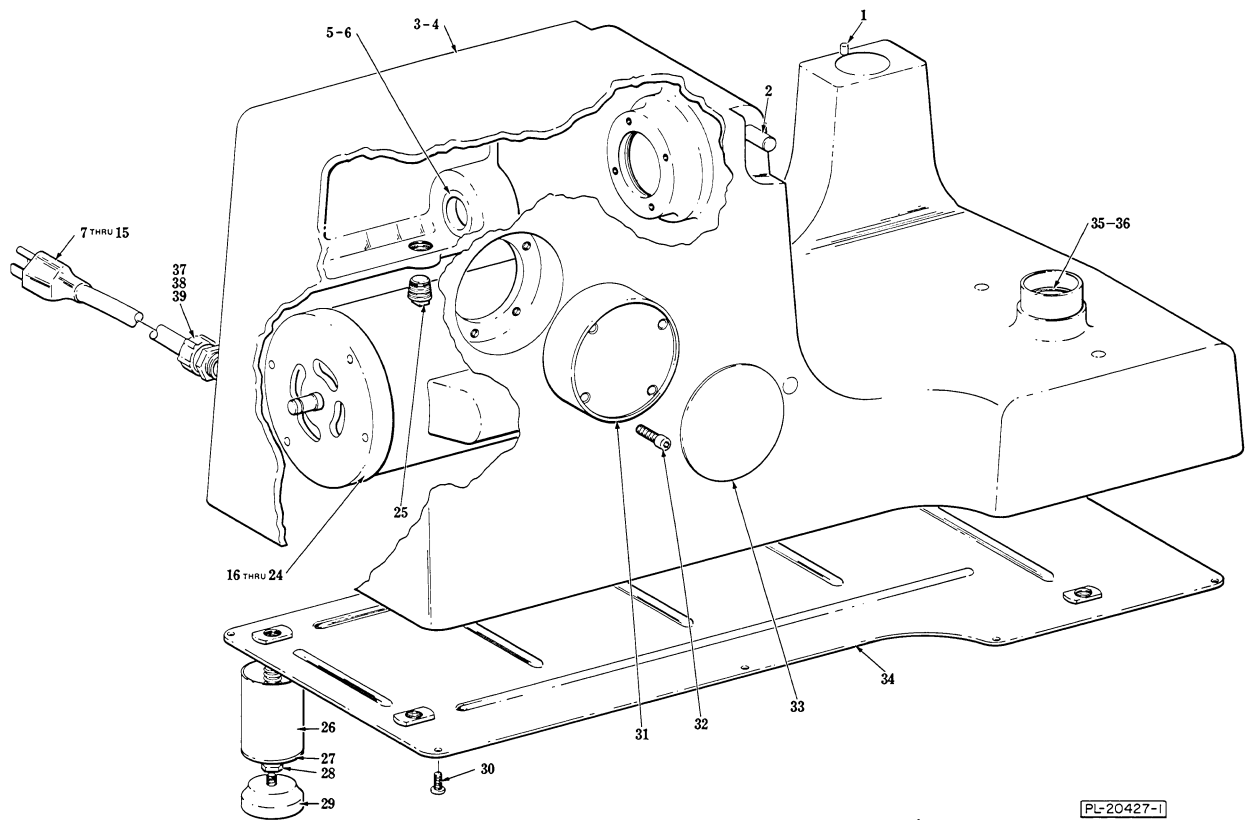


CATALOG OF REPLACEMENT PARTS

MODELS 8186 & 84186 FOOD CUTTERS

(INCLUDES MOTOR PARTS)

ML-33892 — 8186
ML-33764 — 84186
ML-38753 — 8186
ML-38752 — 84186



BASE UNIT

BASE UNIT

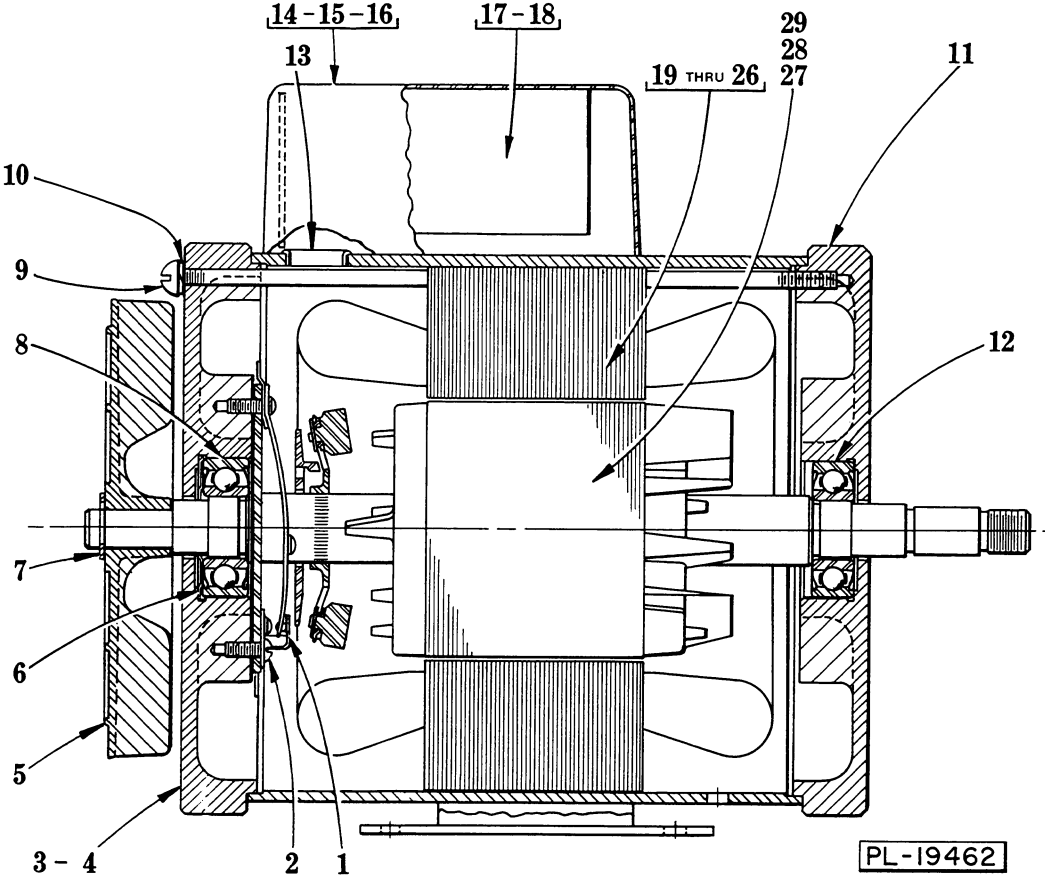
ILLUS. PL-20427-1	PART NO.	NAME OF PART ²²	AMT.
1	11800-242	Dowel	1
2	116644-2	Pin - Bowl Cover Hinge	1
3	291766	Base, Bearings & Interlock Control Shaft Assy. (84186)	1
4	291766-2	Base, Bearings & Interlock Control Shaft Assy. (8186)	1
5	291701	Insert (Pulley End)	1
6	291692	Seal - Knife Shaft (84186)	1
7	117542-21	Cord & Plug (115 V., 60 Hz., 1 Ph.)	1
8	117542-22	Cord & Plug (230 V., 60 Hz., 1 Ph.)	1
9	117613-6	Cord & Plug (200 V., 50/60 Hz., 3 Ph.)	1
10	117542-18	Cord & Plug (220/240 V., 50 Hz., 1 Ph.)	1
11	122292-3	Cord & Plug (208 V., 60 Hz., 3 Ph.)	1
12	117612-7	Cord & Plug (460 V., 60 Hz., 3 Ph.)	1
13	117613-24	Cord Assy. (I.E.C.) (380 V., 50 Hz., 3 Ph.)	1
14	SD-24-1	Self-Tapping Screw 10-24 x 3/8 Pan Hd., Type TT (Ground)	1
15	WL-8-13	Lockwasher 10 Int. Shakeproof	1
*16	— — —	Hobart Built Motor Assy	1
17	293922-1	Other then Hobart Built Motor Assy. (115-230 V., 60 Hz., 1 Ph.)	1
18	293922-2	Other then Hobart Built Motor Assy. (220/240 V., 50 Hz. 1 Ph.)	1
19	293923	Other then Hobart Built Motor Assy. (208/200/460 V., 60 Hz., 3 Ph.) & (200/380/415 V., 50 Hz., 3 Ph.)	1
20	SC-41-15	Cap Screw 5/16-18 x 1 1/4 Hex Hd	2
21	WS-5-32	Washer	2
22	291284	Washer - Toothed	4
23	WL-3-44	Lock Washer 5/16 Medium	4
24	NS-13-14	Mach. Nut 5/16-18 Hex	4
25	FP-28-18	Plug - Pipe 3/4 (84186)	1
26	77772-2	Leg	4
27	64814	Cap - Leg End	4
28	290061-3	Stud - Leg	4
29	83681	Foot - Rubber	4
30	SD-24-44	Self-Tapping Screw 10-24 x 1/2 Phil., Pan Hd., Type TT	10
31	292032-1	Plug - Attachment Hub (8186)	1
32	SC-89-4	Cap Screw 1/4-20 x 1 Hex Hd. (8186)	4
33	292068	Disc - Trim (8186)	1
34	291684	Bottom Cover Assy	1
35	RR-7-7	Retaining Ring	2
36	BB-5-34	Ball Bearing - Hoover #NSK6204DDUCE1VS3	2
37	FE-8-20	Connector - Strain Relief (Single Phase)	1
38	FE-8-21	Connector - Strain Relief (Three Phase, Domestic)	1
39	FE-15-38	Connector - Strain Relief (Three Phase, Export)	1
	290574	Leg Kit (Incls. items 26 thru 29)	1

*Hobart Built Motor Assy. Discontinued. To replace order:

270431-1 (60 Hz., 1 Ph.)

270431-2 (50 Hz., 1 Ph.)

270431-3 (3 Ph.).



HOBART BUILT MOTOR PARTS

HOBART BUILT MOTOR PARTS

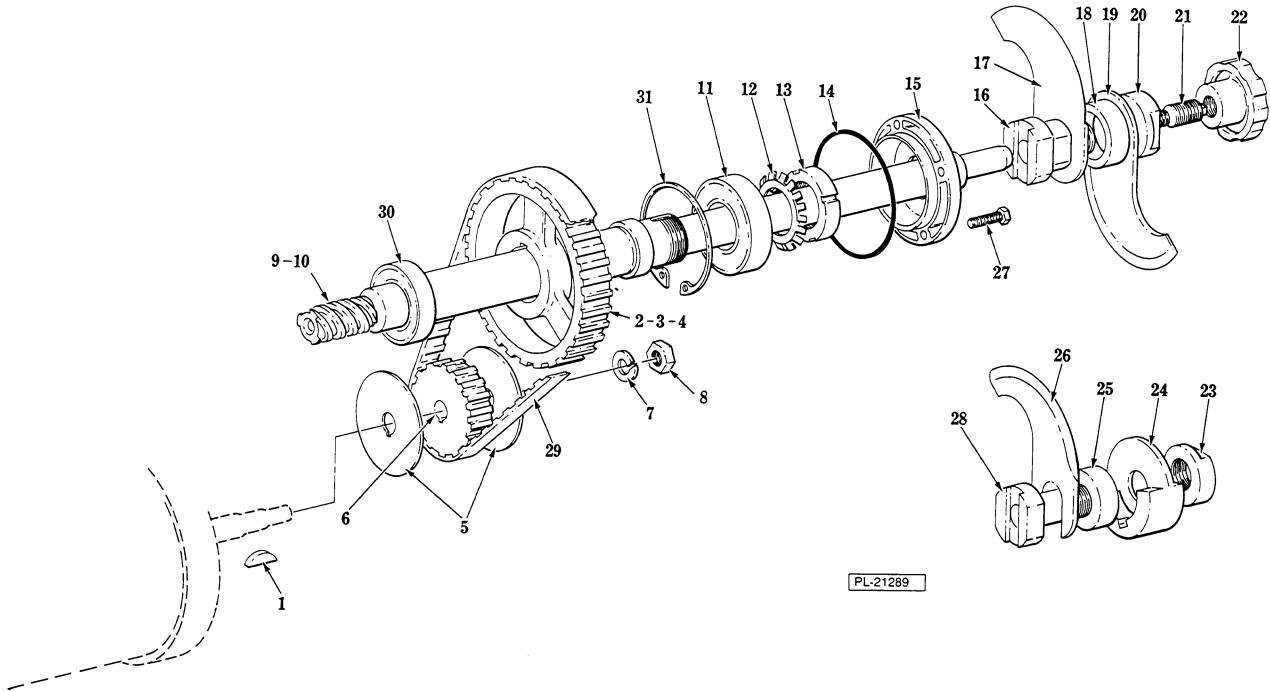
ILLUS. PL-19462	PART NO.	NAME OF PARTs	AMT.
1	119858-2	Switch - Starting (Stationary Part)	1
*2	SC-9-49	Mach. Screw 6-32 x 3/8 Rd. Hd	2
*3	114379-3	Bracket - Bearing (Fan End)	1
**4	114379-2	Bracket - Bearing (Fan End)	1
5	292466-1	Fan - Ventilating	1
6	SL-2-4	Loading Spring - N.D. #S-17	1
7	RR-4-17	Retaining Ring	1
8	BB-5-30	Ball Bearing - N.D. #Z99503	1
9	SC-60-68	Mach. Screw 10-24 x 7 1/2 Rd. Hd	4
10	WL-8-13	Lock Washer 10 Int. Shakeproof	4
11	114379-4	Bracket - Bearing (Pulley End)	1
12	BB-5-30	Ball Bearing - N.D. #Z99503	1
*13	80369	Bushing - Snap (Field Ring)	1
*14	104725	Capacitor Cover & Insulator Assy	1
*15	SD-15-3	Self-Tapping Screw 10-24 x 1/4 Pan Hd., Type TT	2
*16	WS-2-15	Washer (Shims Screws to Prevent Bottoming)	2
*17	89258	Retainer - Capacitor	1
*18	70487-6	Capacitor	1
19	65477-158-1	Stator Assy. (115 V., 60 Hz., 1 Ph.)	1
20	65477-158-2	Stator Assy. (230 V., 60 Hz., 1 Ph.)	1
21	65477-158-3	Stator Assy. (220/240 V., 50 Hz., 1 Ph.)	1
22	65478-179-1	Stator Assy. (200/208 V., 60 Hz., 3 Ph.)	1
23	65478-179-2	Stator Assy. (200/220 V., 50 Hz., 3 Ph.)	1
24	65478-179-3	Stator Assy. (460 V., 60 Hz., 3 Ph.)	1
25	65478-179-4	Stator Assy. (380 V., 50 Hz., 3 Ph.)	1
26	79118	Bushing - Snap (Field Ring)	1
*27	22275-182	Rotor Assy. (60 Hz.)	1
*28	22275-183	Rotor Assy. (50 Hz.)	1
**29	15747-279	Rotor Assy.	1

*1 Ph.

**3 Ph.

Above motor parts are for Hobart built motors Only.

Components parts for Other than Hobart Built Motors are not available from Hobart.

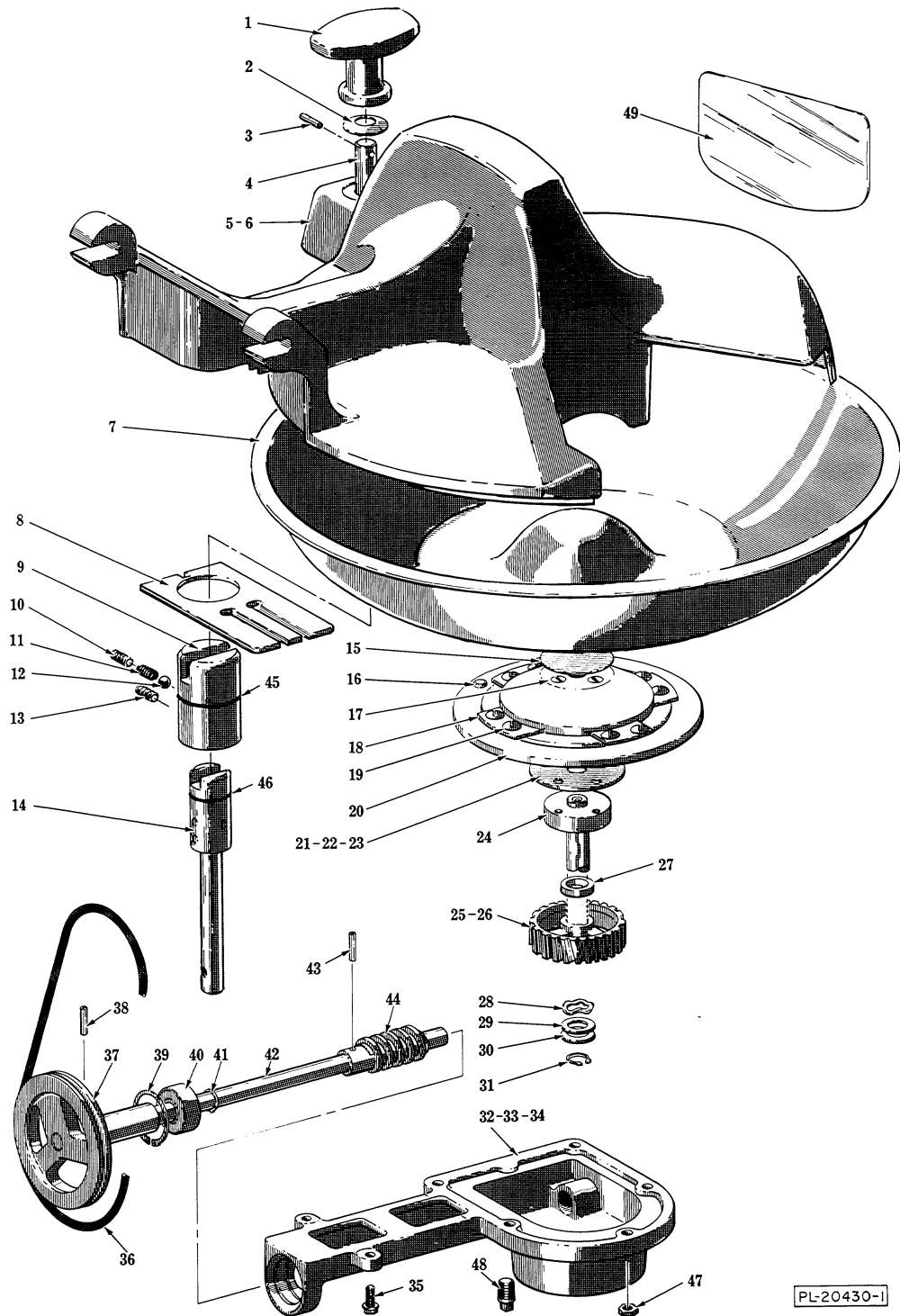


KNIFE DRIVE UNIT

KNIFE DRIVE UNIT

ILLUS. PL-21289	PART NO.	NAME OF PART ³⁶	AMT.
1	KW-3-10	Key - #606 Woodruff	1
2	291634-2	Gear - Driven (36T)	1
3	12430-142	Key - 1/4 x 1/4 x 1	1
4	SC-110-99	Set Screw 3/16-18 x 3/8 Hds., Oval Pt	2
5	77358	Flange - Flexa-Gear	2
6	77357	Gear - Drive (18T)	1
7	WL-4-13	Lock Washer - 1/2 Medium	1
8	NS-13-35	Full Nut 1/2-10 Hex Fin	1
9	270856	Shaft - Knife (84186)	1
10	274303	Shaft - Knife (8186)	1
11	BB-7-39	Ball Bearing - N.D. #Z99507XR	1
12	WL-12-8	Lock Washer N.D.#W-07	1
13	NS-47-12	Lock Nut N.D. #N-07	1
14	67500-115	"O" Ring	1
15	291705	Cap - End (Knife End)	1
16	71313	Bushing - Knife Retaining	1
17	77372	Knife - Leader	1
18	71312	Collar - Knife Retainer Bushing	1
19	77373	Knife - Follower	1
20	71311	Collar - Locking	1
21	78398	Insert - Knife Shaft	1
22	77371	Knob - Fluted	1
*23	103904	Collar - Locking	1
*24	118150	Balance & Pin Assy	1
*25	103903	Collar - Knife Retaining Bushing	1
*26	117675	Knife - Rotary (Follower)	1
27	SC-67-8	Mach. Screw 10-24 x 7/8 Hex Hd	4
*28	7157	Bushing - Knife Retaining	1
29	77370	Flexa-Gear	1
30	BB-15-22	Ball Bearing - Fafnir #9107KDD	1
31	RR-4-24	Retaining Ring	1
	101790	Knife Assy. (Incls. items 16 thru 20)	1
	117677	*Single Following Knife Assy. (Incls. items 23 thru 28)	1

*Not NSF Approved.

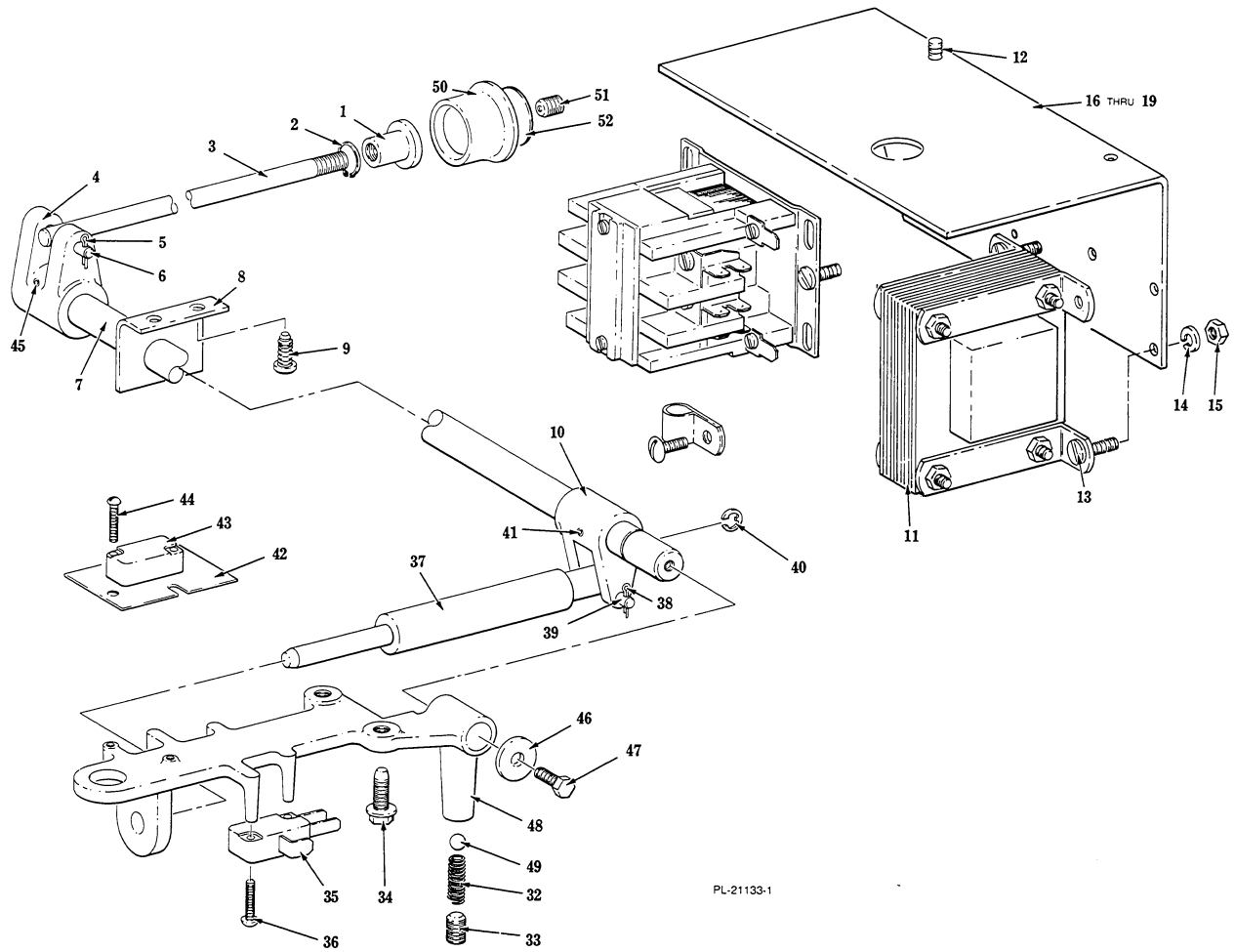


BOWL AND BOWL DRIVE UNIT

PL-20430-1

BOWL AND BOWL DRIVE UNIT

ILLUS. PL-20430-1	PART NO.	NAME OF PART ²²	AMT.
1	116814	Handle Locking	1
2	77374	Washer - Belleville	1
3	PG-3-27	Groov-Pin - Type A, $\frac{3}{16} \times \frac{7}{8}$	1
4	117168	Bolt - Interlock	1
5	290570	Bowl Cover & Caution Plate Assy. (60 Hz.)	1
6	124739-2	Cover - Bowl (50 Hz.)	1
7	290239	Bowl & Adapter Assy	1
8	123934	Comb	1
9	77376	Adapter - Locking	1
10	SC-64-23	Set Screw - $\frac{5}{16}$ -18 x $\frac{3}{8}$ Soc. Hdls., Oval Pt. "Nylok"	1
11	77381	Spring - Ball Detent	1
12	BA-2-10	Ball - $\frac{1}{4}$ Dia	1
13	SC-64-13	Set Screw - $\frac{5}{16}$ -18 x $\frac{3}{4}$ Soc. Hdls., Cup Pt. "Nylok"	1
14	291776	Interlock Control Shaft Assy	1
15	116651	Cover - Bowl Support	1
16	88417	Pin - Bowl Stop	1
17	SC-22-32	Mach. Screw $\frac{1}{4}$ -20 x $\frac{1}{2}$ Flat Hd	3
18	78061	Clamp - Bowl Support	4
19	SC-53-9	Mach. Screw - $\frac{1}{4}$ -28 x $\frac{1}{2}$ Truss Hd	8
20	291587-2	Support - Bowl	1
21	116654-1	Shim - Bowl Adjusting (.003 Thk., Green)	AR
22	116654-2	Shim - Bowl Adjusting (.005 Thk., Blue)	AR
23	116654-3	Shim - Bowl Adjusting (.010 Thk., Brown)	AR
24	291773	Shaft - Vertical Bowl Drive	1
25	291693-2	Gear - Vertical Bowl Drive (51T)	1
26	12430-47	Key - $\frac{3}{16} \times \frac{3}{16} \times \frac{11}{16}$	1
27	116647	Spacer - Bowl Drive	1
28	SL-3-2	Spring - Loading	1
29	WS-10-20	Washer	AR
30	WS-11-1	Washer	1
31	RR-4-20	Retaining Ring	1
32	291785	Case - Gear (Incls. items 33 & 34)	1
33	BN-2-9	Needle Bearing	1
34	291686	Seal - Bowl Drive Gear	1
35	SD-15-25	Self-Tapping Screw $\frac{1}{4}$ -20 x $\frac{5}{8}$ Hex Washer Hd., Type TT	2
36	291704	Belt - Round	1
37	291789-2	Pulley - Horizontal Bowl Drive	1
38	RP-3-14	Roll Pin $\frac{3}{16}$ Dia. x $\frac{7}{8}$ Lg	1
39	RR-7-8	Retaining Ring	1
40	BB-5-30	Ball Bearing - N.D. #Z99503XR	1
41	RR-4-18	Retaining Ring	1
42	291688	Shaft - Horizontal Bowl Drive	1
43	RP-3-14	Roll Pin $\frac{3}{16}$ Dia. x $\frac{7}{8}$ Lg	1
44	77349	Worm - Horizontal Bowl Drive Shaft (1T)	1
45	67500-14	"O" Ring	1
46	67500-10	"O" Ring	1
47	NS-13-14	Mach. Nut $\frac{5}{16}$ -18 Hex	6
48	FP-28-42	Pipe Plug $\frac{1}{8}$ Sq. Hd	1
49	118801	Scraper - Bowl	1
	290910-1	Bowl Cover & Locking Knob Assy. (60 Hz.) (Incls. item 1 thru 5)	1
	290910-2	Bowl Cover & Locking Knob Assy. (50 Hz.) (Incls. item 1, 2, 3, 4 & 6)	1
	291786	Shaft - Horizontal Bowl Drive Assy. (Incls. items 37, 38, 40, 41 & 42)	1

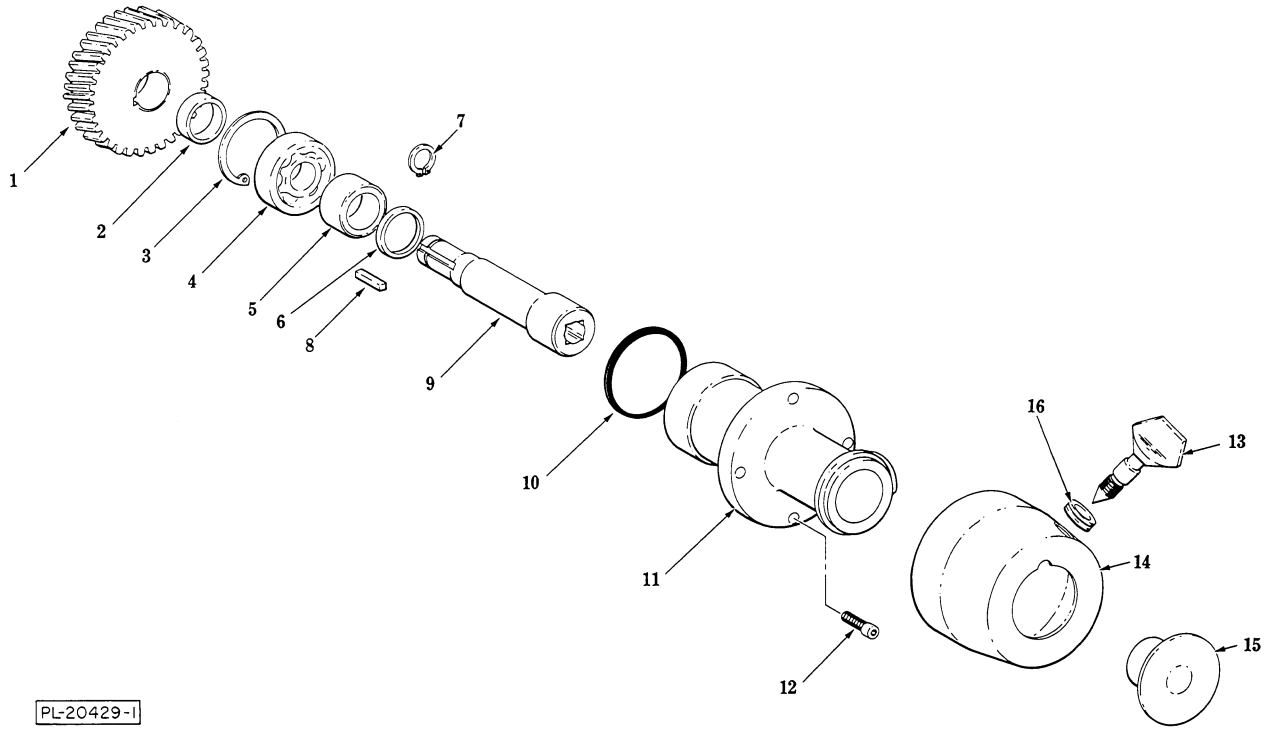


PL-21133-1

SWITCH UNIT

SWITCH UNIT

ILLUS. PL-21133-1	PART NO.	NAME OF PART ³⁶	AMT.
1	117705	Bushing - Switch Rod	1
2	RR-4-17	Retaining Ring	1
3	291697	Rod - On/Off	1
4	116713	Clevis	1
5	PC-3-23	Cotter Pin 1/16 x 1/2	1
6	77390	Pin - Clevis	1
7	291698	Shaft - Switch Control	1
8	117633	Bracket - Switch Control Rod	1
9	SD-15-4	Self-Tapping Screw 10-24 x 1/2 Pan Hd., Type TT	2
10	291780-1	Clevis - Switch End	1
11	101935	Transformer - Step Down (VA-50) (380 V., 50 Hz., 3 Ph.; 460 V., 60 Hz., 3 Ph.)	1
12	SD-15-4	Self-Tapping Screw 10-24 x 1/2 Pan Hd., Type TT	2
13	SC-18-1	Mach. Screw 10-24 x 3/8 Pan Hd.	2
14	WL-3-24	Lock Washer 10 Medium	2
15	NS-9-22	Mach. Nut 10-24 Hex	2
16	270532	Bracket - Electrical	1
17	SC-27-30	Mach. Screw 8-32 x 1/2 Rd. Hd. (Common Ground)	1
18	WL-8-13	Lock Washer 10 Int. Shakeproof	1
19	NS-9-12	Mach. Nut 8-32 Hex	1
20	SC-18-1	Mach. Screw 10-24 x 3/8 Pan Hd.	2
21	WL-3-24	Lock Washer 10 Medium	2
22	NS-9-22	Mach. Nut 10-24 Hex	2
23	87713-38-2	Contactor 2 Pole (115 Volt Coil)	1
24	87713-38-1	Contactor 2 Pole (220 Volt Coil)	1
25	87713-40-2	Contactor 3 Pole (115 Volt Coil)	1
26	87713-40-1	Contactor 3 Pole (220 Volt Coil)	1
27	87713-74-1	Contactor 4 Pole (115 Volt Coil)	1
28	87713-74-3	Contactor 4 Pole (240 Volt Coil)	1
29	87713-74-2	Contactor 4 Pole (220 Volt Coil)	1
30	88196-12-4	Overload Relay (2.4A - 4.0A)	1
31	88196-12-6	Overload Relay (6.0A - 10.0A)	1
32	77381	Spring - Ball Detent	1
33	SC-64-23	Set Screw 5/16-18 x 3/8 Hdls., Oval Pt	1
34	SD-15-25	Self-Tapping Screw 1/4-20 x 5/8 Hex Washer Hd., Type TT	2
35	87711-202-1	Switch - Miniature	AR
36	SC-60-40	Mach. Screw 4-40 x 5/8 Rd. Hd	AR
37	291757	Pin - Interlock Bar	1
38	PC-3-23	Cotter Pin 1/16 x 1/2	1
39	77390	Pin - Clevis	1
40	RR-4-25	Retaining Ring	1
41	RR-2-36	Roll Pin 1/8 Dia. x 1 Lg	1
42	291805	Insulator - Snap Switch	1
43	87711-201-2	Switch	1
44	SC-60-40	Mach. Screw 4-40 x 5/8 Rd. Hd	2
45	RP-2-36	Roll Pin 1/8 Dia. x 1 Lg	1
46	WS-23-19	Washer	1
47	SC-68-7	Mach. Screw 10-24 x 3/8 Hex Hd	1
48	291700-2	Frame - Switch Interlock	1
49	BA-2-10	Ball 1/4 Dia	1
50	120126	Pull Knob & Label Assy. (Incls. items 51 & 52)	1
51	SC-47-95	Set Screw 5/16-18 x 1/4 Soc. Hdls., Cup Pt	1
52	119601	Label - Knob (Start/Stop)	1
53	78752-12	Clamp 1/4	1
54	SC-8-10	Mach. Screw 10-24 x 1/2 Rd. Hd.	1
55	WL-8-13	Lock Washer 10 Int. Shakeproof	1
56	NS-9-22	Mach. Nut 10-24 Hex	1



PL-20429-1

ATTACHMENT DRIVE UNIT

ILLUS. PL-20429-1	PART NO.	NAME OF PART ²²	AMT.
1	291703	Gear - Attachment Hub (20T)	1
2	292031	Spacer - Attachment Hub	1
3	RR-6-2	Retaining Ring	1
4	BB-7-52	Ball Bearing Fafnir 2205KDD	1
5	83440	Bearing (Oil-less)	1
6	70090	Seal - Oil	1
7	RR-4-9	Retaining Ring	1
8	12430-47	Key - Attachment Hub	1
9	291689	Shaft - Attachment Hub	1
10	67500-54	"O" Ring - Attachment Hub	1
11	291635	#12 Attachment Hub & Bearing (Incls. items 5 & 6)	1
12	SC-89-4	Cap Screw 1/4-20 x 1 Hex Hd	4
13	291702	Thumb Screw Assy	1
*14	292908	Cap - Trim	1
15	114824-1	Plug - Attachment Hole	1
16	79537	Grommet - Thumb Screw	1

*Previous Trim Cap did not require grommet. To replace order item 14 Trim Cap & item 16 Grommet.