



CATALOG OF REPLACEMENT PARTS

MODEL D300 SERIES MIXERS

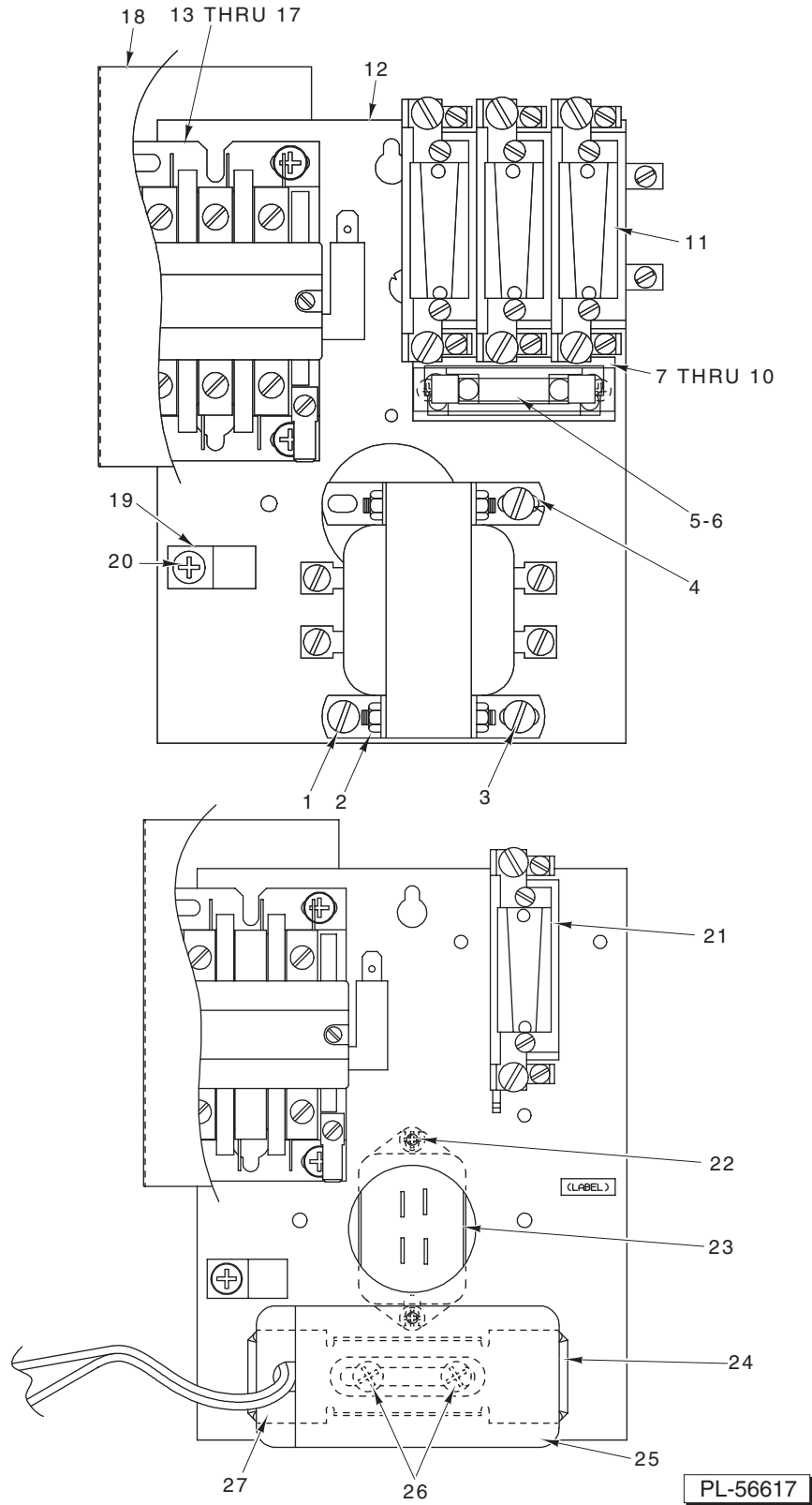
(INCLUDES MOTOR PARTS)

ML-134211	D300T (Timed)
ML-134213	D300C (Timed)

PRIOR MLS COVERED IN THIS MANUAL

ML-104421	D300T (Timed)
ML-134114	D300C (Timed)



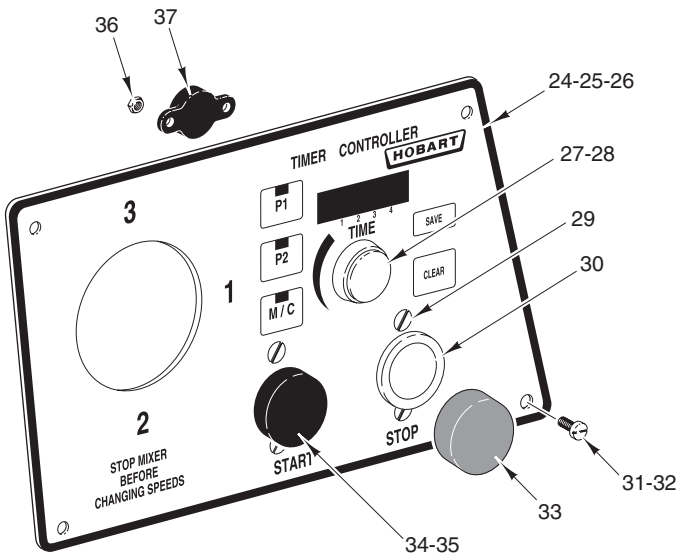
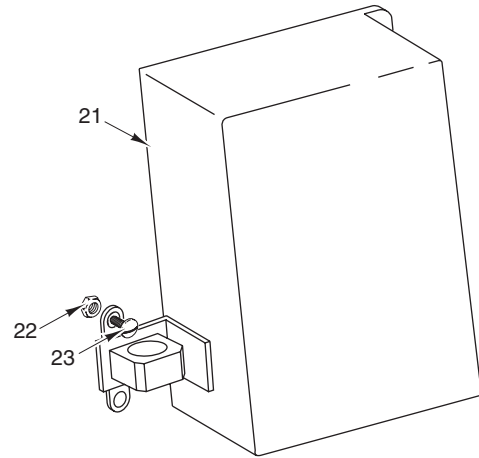
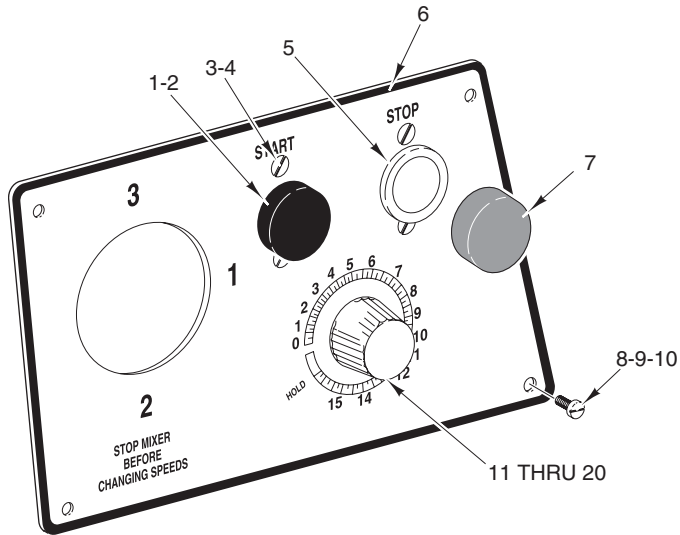


MAGNETIC CONTROL UNIT

MAGNETIC CONTROL UNIT

ILLUS. PL-56617	PART NO.	NAME OF PART	AMT.
1	SD-015-20	Self-Tapping Screw 10-32 x 3/8 Phil. Pan Hd., Type TT (Above 250 V.) (3 Ph.)	1
2	00-101935	Transformer (Above 250 V.)	1
3	SD-015-20	Self-Tapping Screw 10-32 x 3/8 Phil. Pan Hd., Type TT (Above 250 V.) (3 Ph.)	1
4	SD-015-20	Self-Tapping Screw 10-32 x 3/8 Phil. Pan Hd., Type TT (Above 250 V.) (3 Ph.)	1
5	FE-009-25	Fuse (0.5 Amp.) (Above 250 V.) (3 Ph.)	1
6	00-022376-00001	Fuse Holder	1
7	00-124017	Fuse Block Assy. (Above 250 V.) (3 Ph.)	1
8	00-085432	Insulator – Fuse Block (Above 250 V.) (3 Ph.)	1
9	SC-009-49	Mach. Screw 6-32 x 3/8 Slotted Rd. Hd.	1
10	NS-009-07	Mach. Nut 6-32 Hex	1
11	00-088196-005-1	Relay – Thermal Overload (3 Ph.) (Tri-Block)	1
12	00-271911	Panel – Control	1
13	00-087713-037-2	Contactactor (115 V. Coil) (2 Pole)	1
14	00-087713-037-1	Contactactor (220 V. Coil) (2 Pole)	1
15	00-087713-101-1	Contactactor (200/300 V., 60 Hz.; 220 V., 50 Hz.) (3 Ph.) (3 Pole)	1
16	00-087713-101-2	Contactactor (460 V., 60 Hz.; 380/415 V., 50 Hz.) (3 Ph.) (3 Pole)	1
17	SD-019-23	Self-Tapping Screw 10-16 x 3/8 Phil. Pan Hd., Type B	2
18	00-294815	Insulator	1
19	00-078752-00004	Clip – Wiring	1
20	SD-019-23	Self-Tapping Screw 10-16 x 3/8 Phil. Pan Hd., Type B	1
21	00-088196-006-1	Relay – Thermal Overload (1 Ph.)	1
22	SD-015-39	Self-Tapping Screw 8-32 x 1/4 Phil. Pan Hd., Type TT	2
23	00-271612-00002	Electronic Start Switch (1 Ph.)	1
24	00-066621-00001	Bracket (1 Ph.)	1
25	00-070487-00001	Capacitor (1 Ph.)	1
26	SD-029-08	Self-Tapping Screw 8-32 x 3/4 Phil. Pan Hd., Type F	2
27	00-070486-00002	Cap (1 Ph.)	1
	00-112235	Data Plate – Machine	AR
	–	Heater Element – Overload (See Chart Below)	AR

Heater Part No.	Motor Part No.	Machine Voltage Code	Machine Voltage	Freq. Hz.	Ph.	Hp.	Motor RPM	Amp. Rating	Overload Relay
112235-42	875386-1	A	115	60	1	3/4	1725	11.6	E-56
112235-35	875386-3	B	200	60	1	3/4	1725	6.3	E-48
112235-35	875386-1	C	230	60	1	3/4	1725	5.8	E-48
112235-26	875386-2	F	200	60	3	3/4	1725	2.5	E-36
112235-23	875386-4	G	230	60	3	3/4	1725	2.0	E-32
112235-16	875386-4	H	460	60	3	3/4	1725	1.0	E-23
112235-35	875386-1	M	220	50	1	3/4	1425	6.4	E-48
112235-23	875386-4	AB	200	50	3	3/4	1425	2.0	E-32

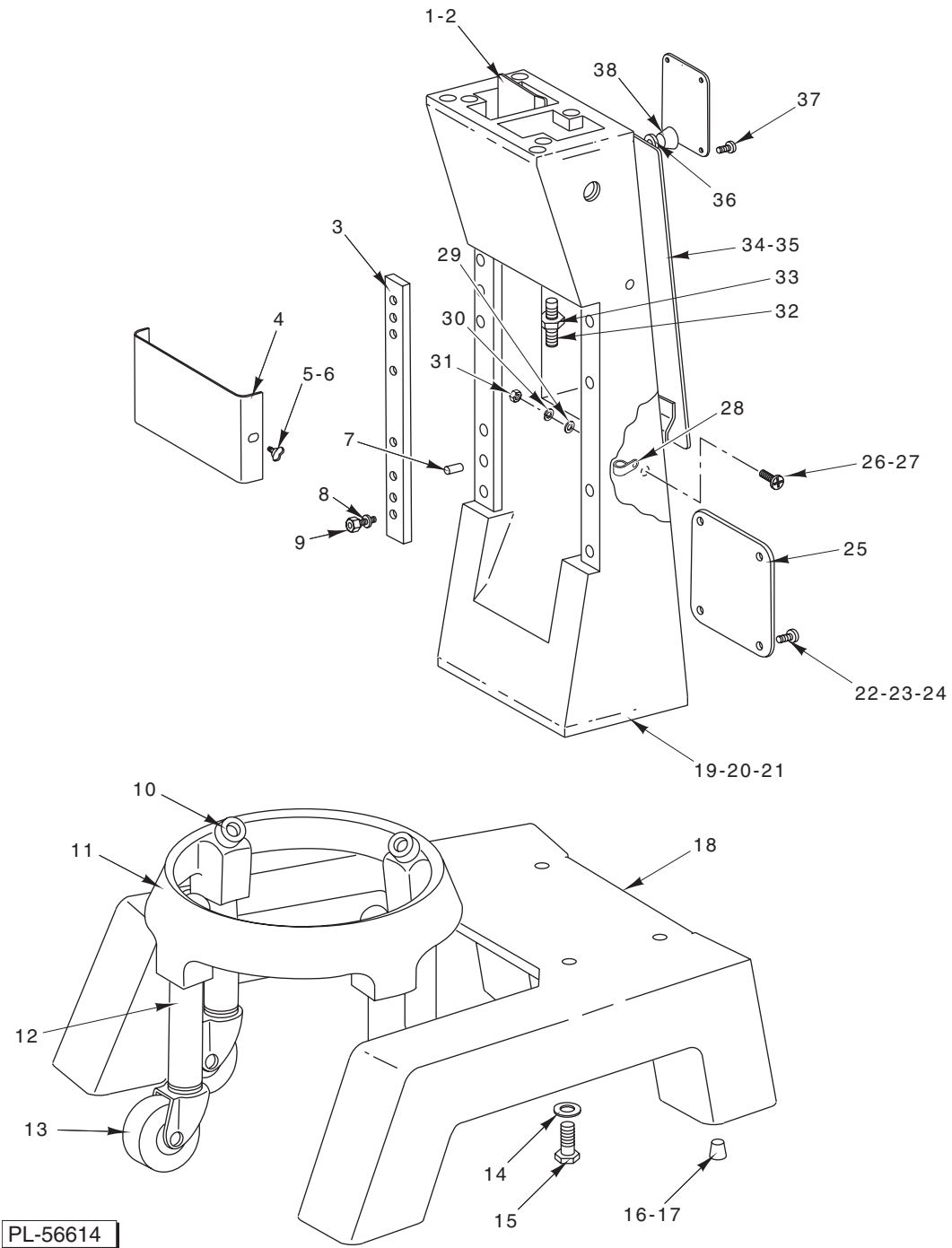


PL-56619

TIMER CONTROL AND SWITCH UNIT

TIMER CONTROL AND SWITCH UNIT

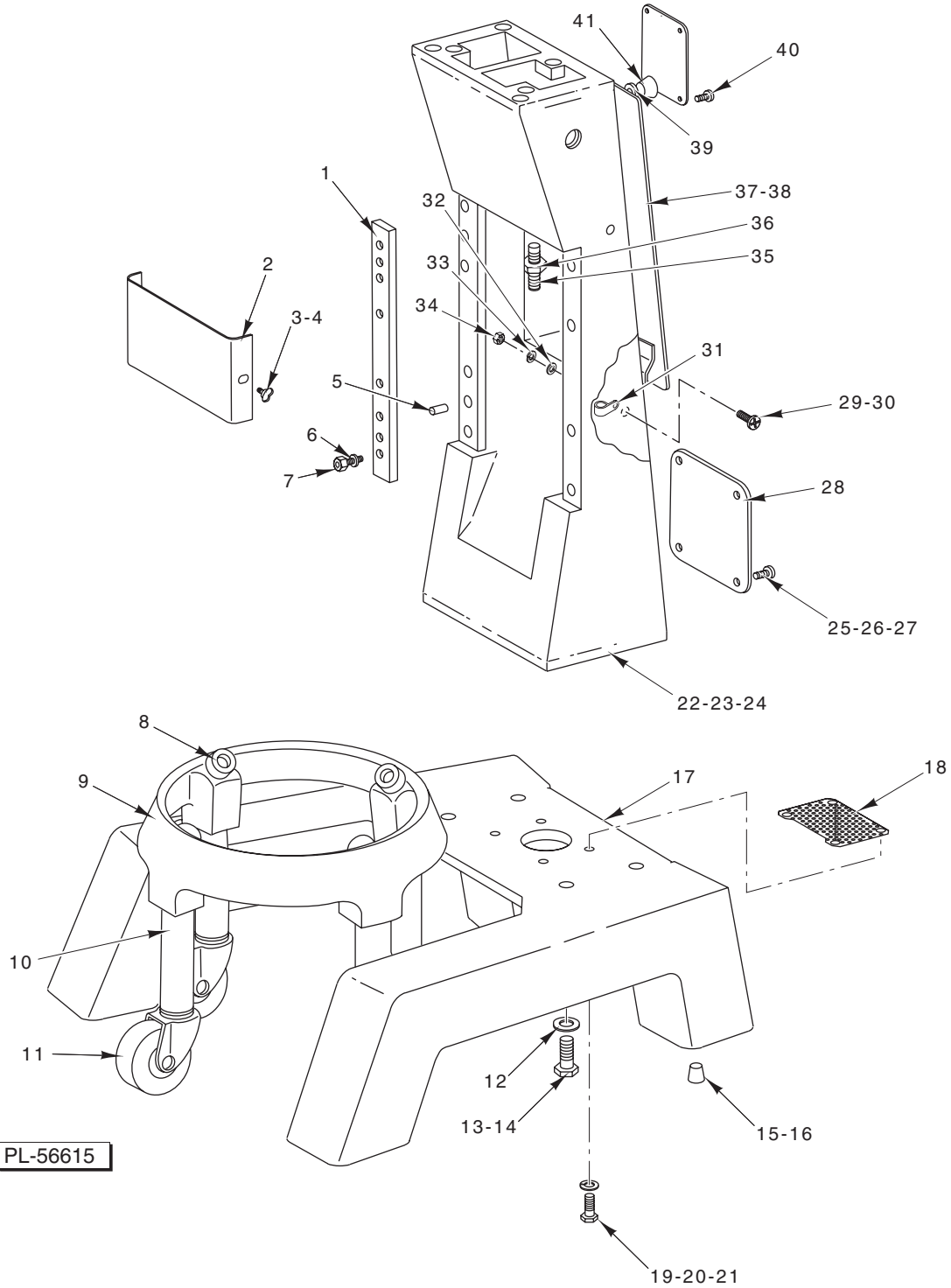
ILLUS.	PART NO.	NAME OF PART	AMT.
PL-56619			
1	00-087711-183-1	Switch – Push Button (N.O.)(Start)	1
2	00-102467-00001	Cap – Push Button (Start) (Black)	1
3	SC-013-12	Mach. Screw 6-32 x 1/4 Slotted Flat Hd. (Stop) (ML-104421 & ML-134211)	4
4	SC-121-89	Mach. Screw 6-32 x 1/4 Hex Flat Hd. (SST) (ML-134114 & ML-134213)	4
5	00-087711-183-2	Switch – Push Button (N.C.) (Stop)	1
6	00-291725	Plate – Switch & Timer	1
7	00-102467-00002	Cap – Push Button (Stop) (Red)	1
8	SD-024-01	Self-Tapping Screw 10-24 x 3/8 Slotted Pan Hd., Type TT (ML-104421 & ML-134211)	4
9	SD-037-58	Self-Tapping Screw 10-24 x 3/8 Hex Button Hd., Type F (SST) (ML-134114 & ML-134213)	4
10	WL-008-13	Lockwasher #10 Internal	4
11	00-291748	Knob – Timer	1
12	00-294650-004-1	Timer Assy. (115 V., 60 Hz.) (ML-134211 & ML-134213)	1
13	00-294650-004-2	Timer Assy. (200 V., 60 Hz.) (ML-134211 & ML-134213)	1
14	00-294650-004-4	Timer Assy. (200 V., 50 Hz.) (ML-134211 & ML-134213)	1
15	00-294650-004-5	Timer Assy. (115 V., 60 Hz.) (Machine W/Pilot Circuit) (ML-104421 & ML134114)	1
16	00-294650-004-6	Timer Assy. (230 V., 60 Hz.) (ML-104421 & ML134114)	1
17	00-294650-004-7	Timer Assy. (115 V., 50 Hz.) (Machine W/Pilot Circuit) (ML-104421 & ML134114)	1
18	00-294650-004-8	Timer Assy. (220 V., 50 Hz.) (ML-104421 & ML134114)	1
19	SC-013-07	Mach. Screw 5-40 x 1/4 Slotted Flat Hd.	2
20	00-291751	Insulation	1
21	00-437311	Cover & Hasp Assy. (Incls. Items 22 & 23) (ML-134114 & ML-134213).....	1
22	NS-032-01	Lock Nut Special 10-24 (ML-134114 & ML-134213).....	2
23	SC-121-94	Mach. Screw 10-24 x 3/8 Hex Button Head (SST) (ML-134114 & ML-134213)	2
24	00-439338	Switch Plate & Keypad Assy. (ML-104421 & ML-134211)	1
25	00-439400-00001	Board Assy. (120 V.) (ML-104421 & ML-134211)	1
26	00-439400-00002	Board Assy. (240 V.) (ML-104421 & ML-134211)	1
27	00-437775	Knob – Potentiometer (ML-104421 & ML-134211)	1
28	00-437742	Seal – Shaft (ML-104421 & ML-134211)	1
29	SC-053-38	Mach. Screw 6-32 x 1/4 Slotted Truss Hd. (SST) (ML-104421 & ML-134211)	4
30	00-087711-183-2	Switch – Push Button (N.C.) (Stop) (ML-104421 & ML-134211)	1
31	SD-024-01	Self-Tapping Screw 10-24 x 3/8 Slotted Pan Hd., Type TT (ML-104421 & ML-134211)	4
32	WL-008-13	Lockwasher #10 Internal (ML-104421 & ML-134211)	4
33	00-102467-00002	Cap – Push Button (Stop) (Red) (ML-104421 & ML-134211).....	1
34	00-087711-183-1	Switch – Push Button (N.O.) (Start) (ML-104421 & ML-134211)	1
35	00-102467-00001	Cap – Push Button (Start) (Black) (ML-104421 & ML-134211)	1
36	NS-046-17	Stop Nut 4-40 Hex (ML-104421 & ML-134211)	2
37	00-438499-00002	Buzzer (ML-104421 & ML-134211)	1
	00-117542-00021	Cord & Plug (115 V.)	AR
	00-438074-00001	Snubber Assy.....	1



**BASE AND PEDESTAL
(ML-104421 & ML-134114)**

**BASE AND PEDESTAL
(ML-104421 & ML-134114)**

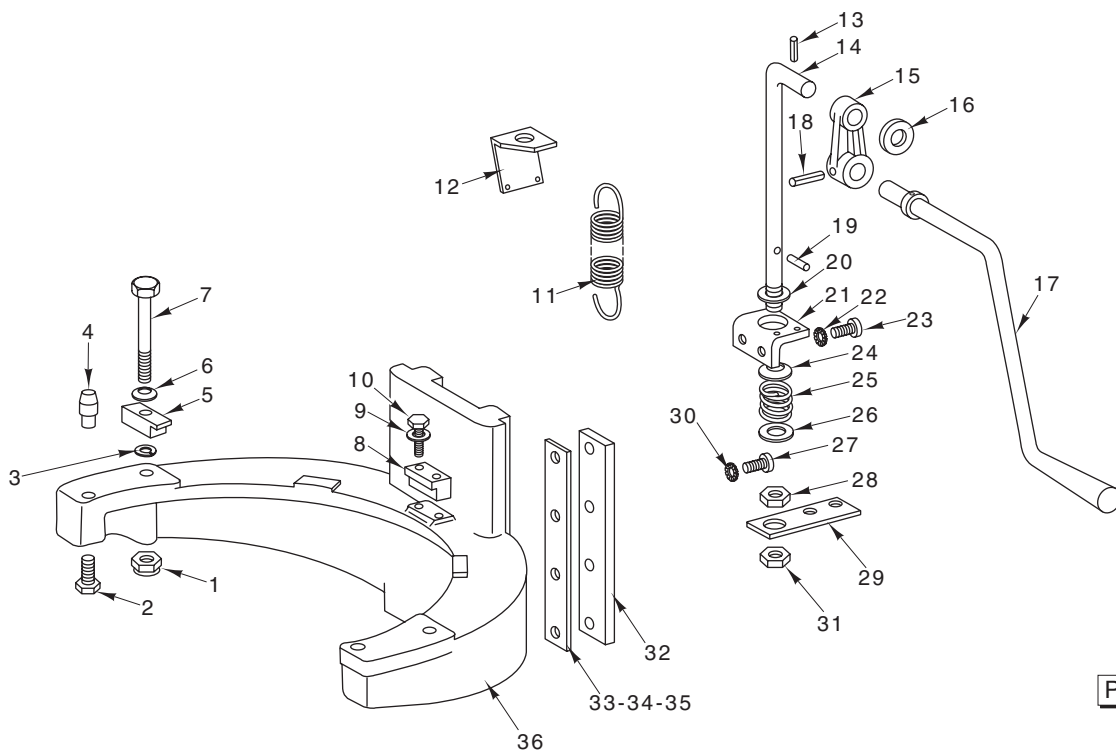
ILLUS. PL-56614	PART NO.	NAME OF PART	AMT.
1	00-070145	Air Baffle Assy.	1
2	SC-013-55	Mach. Screw 10-24 x 1 Slotted Flat Hd.	1
3	00-068717	Slideway	2
4	00-437723	Apron	1
5	00-070641-00011	Thumb Screw 8-32 Special (ML-104421)	2
6	SC-121-92	Mach. Screw 8-32 x 3/8 Hex Button Hd. (SST) (ML-134114)	2
7	00-011800-00116	Dowel	2
8	WL-003-48	Lockwasher 5/16 High Collar	8
9	SC-040-14	Cap Screw 5/16-18 x 3/4 Hex Soc. Hd.	8
10	00-018682-00001	Bumper	4
11	00-315015	Bowl Truck Assy. (Incls. Items 10, 12, & 13)	1
12	00-070590-00001	Leg (6 1/8 Lg.) (30 Qt.)	4
13	00-087668-00002	Caster	4
14	WS-018-19	Washer	4
15	SC-097-53	Cap Screw 3/8-16 x 2 1/4 Hex Hd.	4
16	00-114992	Plug – Base (Plug for Foot Pad)	AR
17	00-116395	Plug – Base	4
18	00-110146-00002	Base Assy.	1
19	00-123961-00004	Pedestal	1
20	SD-024-01	Self-Tapping Screw 10-24 x 3/8 Slotted Pan Hd., Type TT	1
21	WL-010-06	Lockwasher #10 External Shakeproof (Bronze)	1
22	00-123109	Screw 6-32 x 3/8 Serrated Hd. (ML-104421)	4
23	SC-121-90	Mach. Screw 6-32 x 3/8 Hex Button Hd. (SST) (ML-134114)	4
24	WL-013-05	Lockwasher #6 Internal (SST)	4
25	00-123969-00001	Cover & Gasket Assy. (Capacitor & Starter Access)	1
26	SC-122-25	Mach. Screw 8-32 x 1 Phil. Pan Hd. (SST) (ML-104421)	2
27	SC-123-33	Mach. Screw 8-32 x 1 Hex Button Hd. (SST) (ML-134114)	2
28	00-078752-00011	P-Clamp 3/16 P	2
29	WS-019-16	Washer	2
30	WL-007-07	Lockwasher #8 External	2
31	NS-009-12	Mach. Nut 8-32 Hex	2
32	SC-047-46	Set Screw 3/8-16 x 1 1/4 Soc. Hdls., Half-Dog Pt.	1
33	NS-017-15	Jam Nut 3/8-16 Hex	1
34	00-070144-00001	Lift Access Cover Assy.	1
35	00-123109	Screw – Serrated Hd. 6-32 x 3/8	4
36	WS-019-26	Washer	1
37	00-121676-00003	Screw – Special	4
38	00-070450	Knob – Lift	1
	00-110717-00003	Bag & Plugs Assy. (Incls. Items 16 & 17)	1
	00-477597	Feet Kit (Set of 4) (SST)	1



**BASE AND PEDESTAL
(ML-134211 & ML-134213)**

**BASE AND PEDESTAL
(ML-134211 & ML-134213)**

ILLUS.	PART NO.	NAME OF PART	AMT.
PL-56615			
1	00-068717	Slideway	2
2	00-437723	Apron	1
3	00-070641-00011	Thumb Screw 8-32 Special (ML-134211)	2
4	SC-121-92	Mach. Screw 8-32 x 3/8 Hex Button Hd. (SST) (ML-134213)	2
5	00-011800-00116	Dowel	2
6	WL-003-48	Lockwasher 5/16 High Collar	8
7	SC-040-14	Cap Screw 5/16-18 x 3/4 Hex Soc. Hd.	8
8	00-018682-00001	Bumper	4
9	00-315015	Bowl Truck Assy. (Incls. Items 8, 10, & 11)	1
10	00-070590-00001	Leg (6 1/8 Lg.) (30 Qt.)	4
11	00-087668-00002	Caster	4
12	WS-018-19	Washer	4
13	SC-118-09	Cap Screw 3/8-16 x 1 1/4 Hex Hd.	4
14	00-512987	Adhesive	AR
15	00-114992	Plug – Base (Plug for Foot Pad)	AR
16	00-116395	Plug – Base	4
17	00-291499-00003	Base Assy.	1
18	00-108159	Screen – Air	1
19	WS-018-19	Washer	4
20	SC-118-10	Cap Screw 3/8-16 x 1 Hex Hd.	4
21	00-512987	Adhesive	AR
22	00-123961-00004	Pedestal	1
23	SD-024-01	Self-Tapping Screw 10-24 x 3/8 Slotted Pan Hd., Type TT	1
24	WL-010-06	Lockwasher #10 External Shakeproof (Bronze)	1
25	00-123109	Screw 6-32 x 3/8 Serrated Hd. (ML-134211)	4
26	SC-121-90	Mach. Screw 6-32 x 3/8 Hex Button Hd. (SST) (ML-134213)	4
27	WL-013-05	Lockwasher #6 Internal (SST)	4
28	00-123969-00001	Cover & Gasket Assy. (Capacitor & Starter Access)	1
29	SC-122-25	Mach. Screw 8-32 x 1 Phil. Pan Hd. (SST) (ML-134211)	2
30	SC-123-33	Mach. Screw 8-32 x 1 Hex Button Hd. (SST) (ML-134213)	2
31	00-078752-00011	P-Clamp 3/16	2
32	WS-019-16	Washer	2
33	WL-007-07	Lockwasher #8 External	2
34	NS-009-12	Mach. Nut 8-32 Hex	2
35	SC-047-46	Set Screw 3/8-16 x 1 1/4 Soc. Hdls., Half-Dog Pt.	1
36	NS-017-15	Jam Nut 3/8-16 Hex	1
37	00-070144-00001	Lift Access Cover Assy.	1
38	00-123109	Screw – Serrated Hd. 6-32 x 3/8	4
39	WS-019-26	Washer	1
40	00-121676-00003	Screw – Special	4
41	00-070450	Knob – Lift	1
	00-110717-00003	Bag & Plugs Assy. (Incls. Items 15 & 16)	1
	00-477597	Feet Kit (Set of 4) (SST)	1

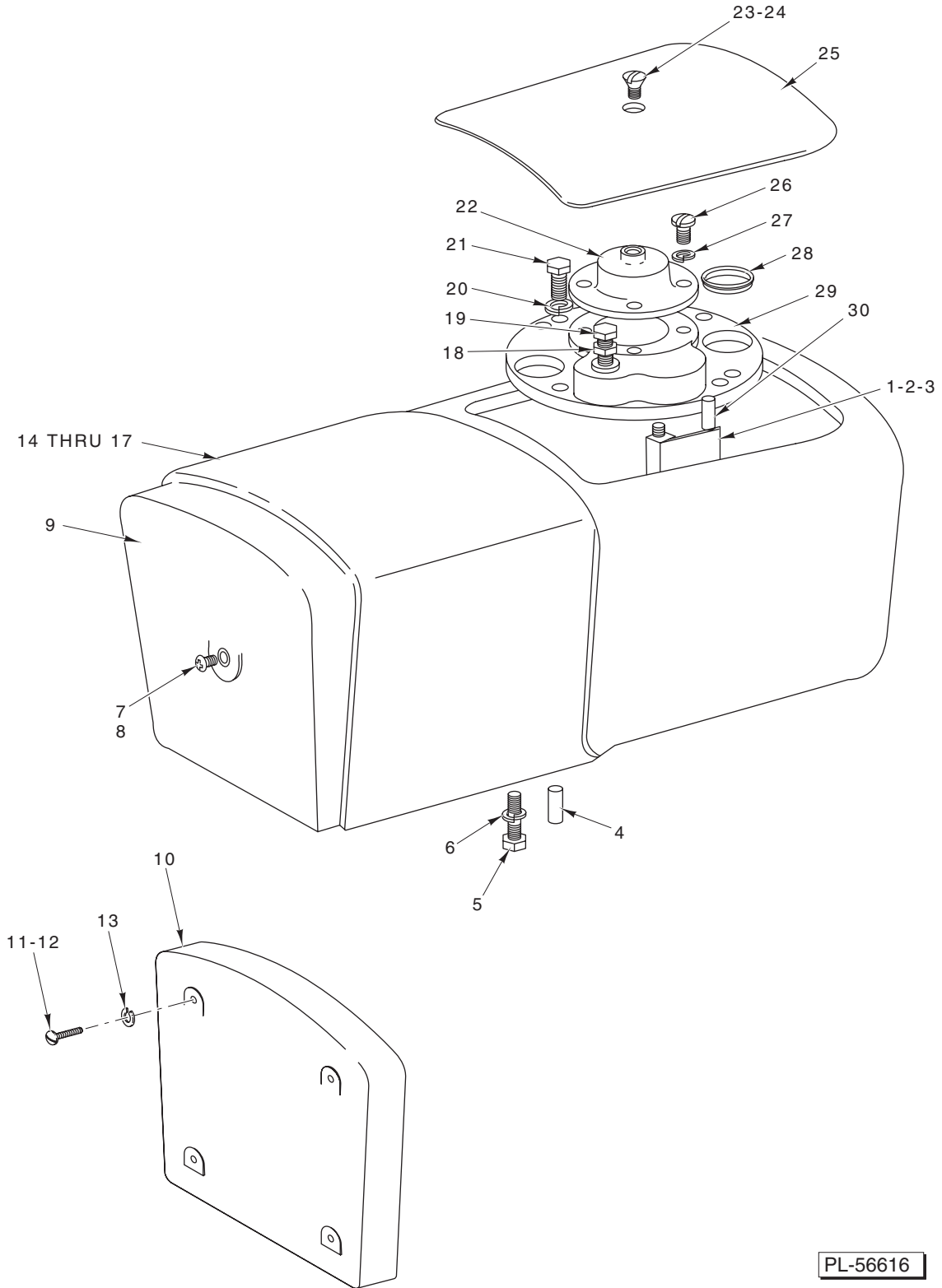


PL-56102

BOWL LIFT UNIT

BOWL LIFT UNIT

ILLUS.	PART NO.	NAME OF PART	AMT.
PL-56102			
1	NS-032-13	Lock Nut ⁵ / ₁₆ -18 Flexloc	2
2	SC-037-75	Cap Screw ⁵ / ₁₆ -18 x ³ / ₄ Hex Hd.	2
3	WS-004-18	Washer	2
4	00-070411	Pin – Bowl Locating	2
5	00-070057	Clamp – Bowl	2
6	00-070087	Washer – Spring	2
7	SC-062-28	Cap Screw ⁵ / ₁₆ -18 x 3 ¹ / ₂ Hex Hd.	2
8	00-070044	Retainer – Bowl	1
9	WL-006-16	Lockwasher ¹ / ₄ Light (SST)	2
10	SC-036-09	Cap Screw ¹ / ₄ -20 x 1 ¹ / ₄ Hex Hd.	2
11	00-023884	Spring – Counterbalance	2
12	00-070056	Bracket – Upper Spring Lift	1
13	RP-002-25	Roll Pin ¹ / ₈ Dia. x ⁷ / ₈ Lg.	1
14	00-068718	Rod – Bowl Lift	1
15	00-069995	Arm – Bowl Lift	1
16	WS-008-47	Washer	1
17	00-293564	Lift Handle Assy.	1
18	RP-002-26	Roll Pin ¹ / ₄ Dia. x 1 ¹ / ₈ Lg.	1
19	RP-002-10	Roll Pin ³ / ₁₆ Dia. x 1 Lg.	1
20	WS-008-47	Washer	1
21	00-438474	Bracket – Bowl Lift	1
22	WL-009-14	Lockwasher ⁵ / ₁₆ Csk. External Shakeproof	2
23	SC-061-03	Cap Screw ⁵ / ₁₆ -18 x ³ / ₄ Soc. Flat Hd.	2
24	00-070131	Washer – Cup	1
25	00-070104	Spring – Bowl Lift	1
26	WS-008-47	Washer	1
27	SC-061-03	Cap Screw ⁵ / ₁₆ -18 x ³ / ₄ Soc. Flat Hd.	8
28	NS-017-31	Jam Nut ¹ / ₂ -20 Hex	1
29	00-070058	Bracket – Lower Spring Lift	1
30	WL-009-14	Lockwasher ⁵ / ₁₆ Csk. External Shakeproof	8
31	NS-017-31	Jam Nut ¹ / ₂ -20 Hex	1
32	00-069996	Gib	2
33	00-070092-00001	Shim – Bowl Support (0.001 Thk.)	AR
34	00-070092-00002	Shim – Bowl Support (0.002 Thk.)	AR
35	00-070092-00003	Shim – Bowl Support (0.003 Thk.)	AR
36	00-069987-00002	Support – Bowl	1

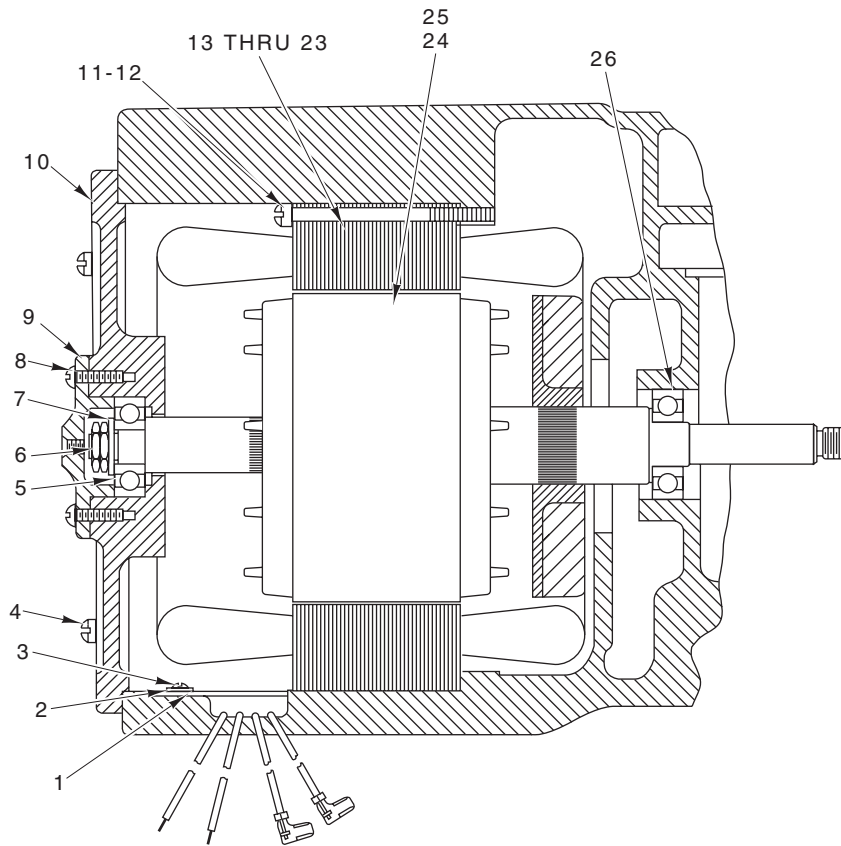


PL-56616

TRANSMISSION CASE

TRANSMISSION CASE

ILLUS.	PART NO.	NAME OF PART	AMT.
PL-56616			
1	00-070872	Deflector – Roller Clutch Oil	1
2	SC-009-82	Mach. Screw 8-32 x 5/16 Slotted Rd. Hd.	1
3	WL-007-06	Lockwasher #8 External Shakeproof	2
4	00-270777	Dowel	2
5	SC-062-27	Cap Screw 3/8-16 x 1 3/4 Hex Hd.	4
6	WL-004-02	Lockwasher 3/8 Light	4
7	SC-113-52	Mach. Screw 10-24 x 1/2 Phil. Truss Hd. (SST) (ML-104421)	1
8	SC-121-97	Mach. Screw 10-24 x 3/4 Hex Button Hd. (SST) (ML-134114)	1
9	00-437918-00006	Cap – Trim (ML-104421 & ML-134114)	1
10	00-479497-00003	Cap – Trim (ML-134211 & ML-134213)	1
11	SC-128-45	Mach. Screw 12-24 x 2 Slotted Pan Hd. (ML-134211)	4
12	SC-122-01	Mach. Screw 12-24 x 2 Hex Flat Hd. (SST) (ML-134213)	4
13	WL-019-79	Lockwasher #12 Helical	4
14	00-290505-00001	Case – Transmission (ML-104421 & ML-134114)	1
15	00-874100-00002	Case – Transmission (ML-134211 & ML-134213)	1
16	–	Motor (ML-104421 & ML-134114) (See page 15)	1
17	–	Motor (ML-134211 & ML-134213) (See Page 17)	1
18	NS-017-14	Jam Nut 3/8-16 Hex	1
19	SC-118-09	Cap Screw 3/8-16 x 1 1/4 Hex Hd.	1
20	WL-003-43	Lockwasher 5/16 Light	4
21	SC-124-14	Cap Screw 5/16-18 x 7/8 Hex Hd.	4
22	00-070017	Retainer – Bearing	1
23	SC-015-36	Mach. Screw 10-24 x 5/8 Oval Hd. (ML-104421 & ML-134211)	1
24	SC-121-95	Mach. Screw 10-24 x 5/8 Flat Hd. (SST) (ML-134114 & ML-134213)	1
25	00-070005-00001	Transmission Case Cover Assy.	1
26	SC-011-74	Mach. Screw 1/4-20 x 5/8 Slotted Fil. Hd.	4
27	WL-003-37	Lockwasher 1/4	4
28	00-064871	Plug – Friction	2
29	00-068721	Bearing Carrier – Transmission Case	1
30	00-011800-00116	Dowel	2
	00-079621	Shim (Between Transmission Case & Pedestal)	AR



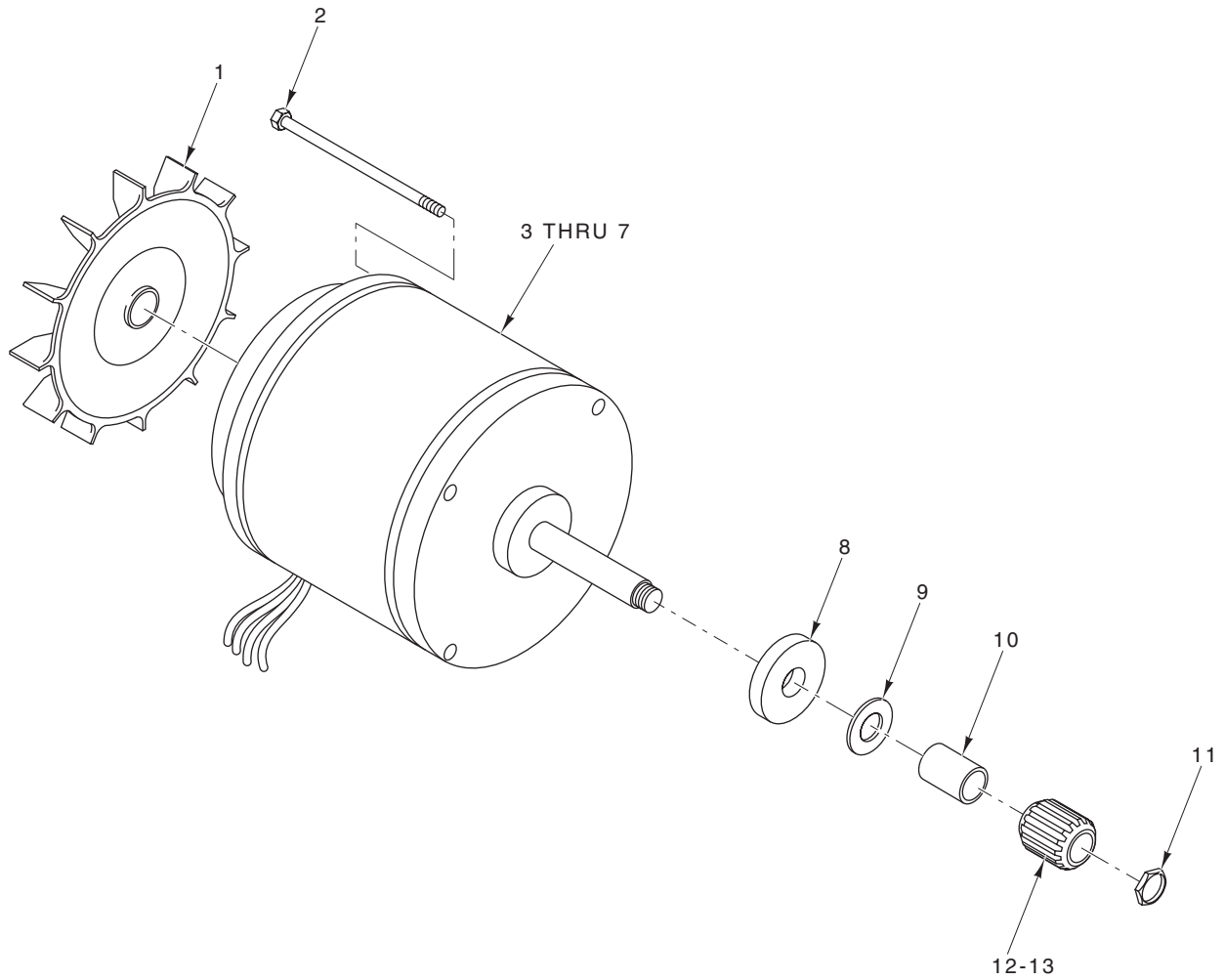
PL-56148

**MOTOR PARTS
(ML-104421 & ML-134114)**

**MOTOR PARTS
(ML-104421 & ML-134114)**

ILLUS. PL-56148	PART NO.	NAME OF PART	AMT.
1	00-070441	Retainer – Lead Wire	1
2	WL-007-07	Lockwasher #8 External Shakeproof	1
3	SC-009-56	Mach. Screw 8-32 x 3/8 Slotted Rd. Hd.	1
4	SC-011-64	Mach. Screw 12-24 x 1 Slotted Fil. Hd.	4
5	BB-021-25	Ball Bearing – NTN 6301-ZZ-C2-5C	1
6	00-011430	Nut – Special	2
7	WS-007-09	Washer	1
8	SC-009-61	Mach. Screw 8-32 x 1/2 Slotted Rd. Hd.	4
9	00-070012	Cap – Bearing	1
10	00-068722-00002	Bracket – Bearing	1
*11	SC-011-32	Mach. Screw 10-24 x 3 Slotted Fil. Hd.	4
**12	SC-011-28	Mach. Screw 10-24 x 2 1/2 Slotted Fil. Hd.	4
*13	00-065477-163-1	Stator Assy. (115 V., 60 Hz.)	1
*14	00-065477-163-2	Stator Assy. (200/208 V., 60 Hz.)	1
*15	00-065477-163-3	Stator Assy. (230 V., 60 Hz.) (ML-104421)	1
*16	00-065477-163-4	Stator Assy. (115 V., 50 Hz.) (ML-104421)	1
*17	00-065477-163-5	Stator Assy. (220 V., 50 Hz.) (ML-104421)	1
**18	00-065478-029-1	Stator Assy. (200/208 V., 60 Hz.)	1
**19	00-065478-029-2	Stator Assy. (230 V., 60 Hz.) (ML-104421)	1
**20	00-065478-029-3	Stator Assy. (460 V., 60 Hz.) (ML-104421)	1
**21	00-065478-029-4	Stator Assy. (220 V., 50 Hz.) (ML-104421)	1
**22	00-065478-029-5	Stator Assy. (380 V., 50 Hz.) (ML-104421)	1
**23	00-065478-029-7	Stator Assy. (415 V., 50 Hz.) (ML-104421)	1
**24	00-015747-00219	Rotor Assy. (50/60 Hz.)	1
*25	00-022275-00275	Rotor Assy. (50/60 Hz.)	1
26	BB-018-17	Ball Bearing – Fafnir #H203PP	1

*1 Ph.
**3 Ph.

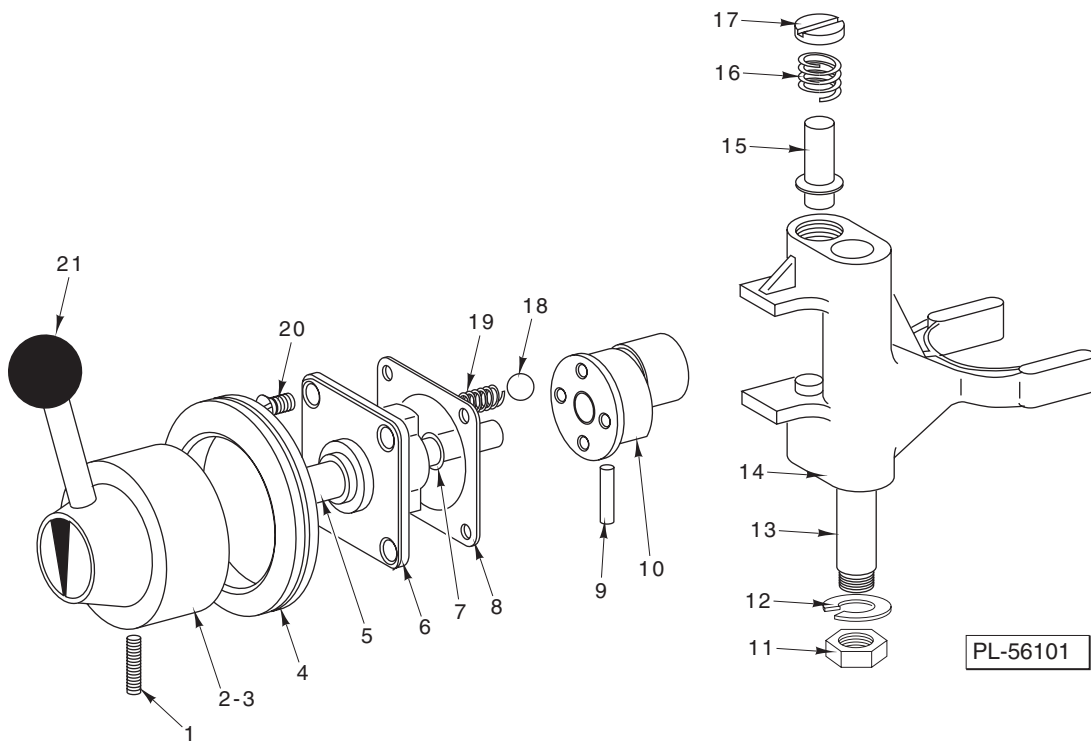


PL-56618

**MOTOR PARTS
(ML-134211 & ML-134213)**

**MOTOR PARTS
(ML-134211 & ML-134213)**

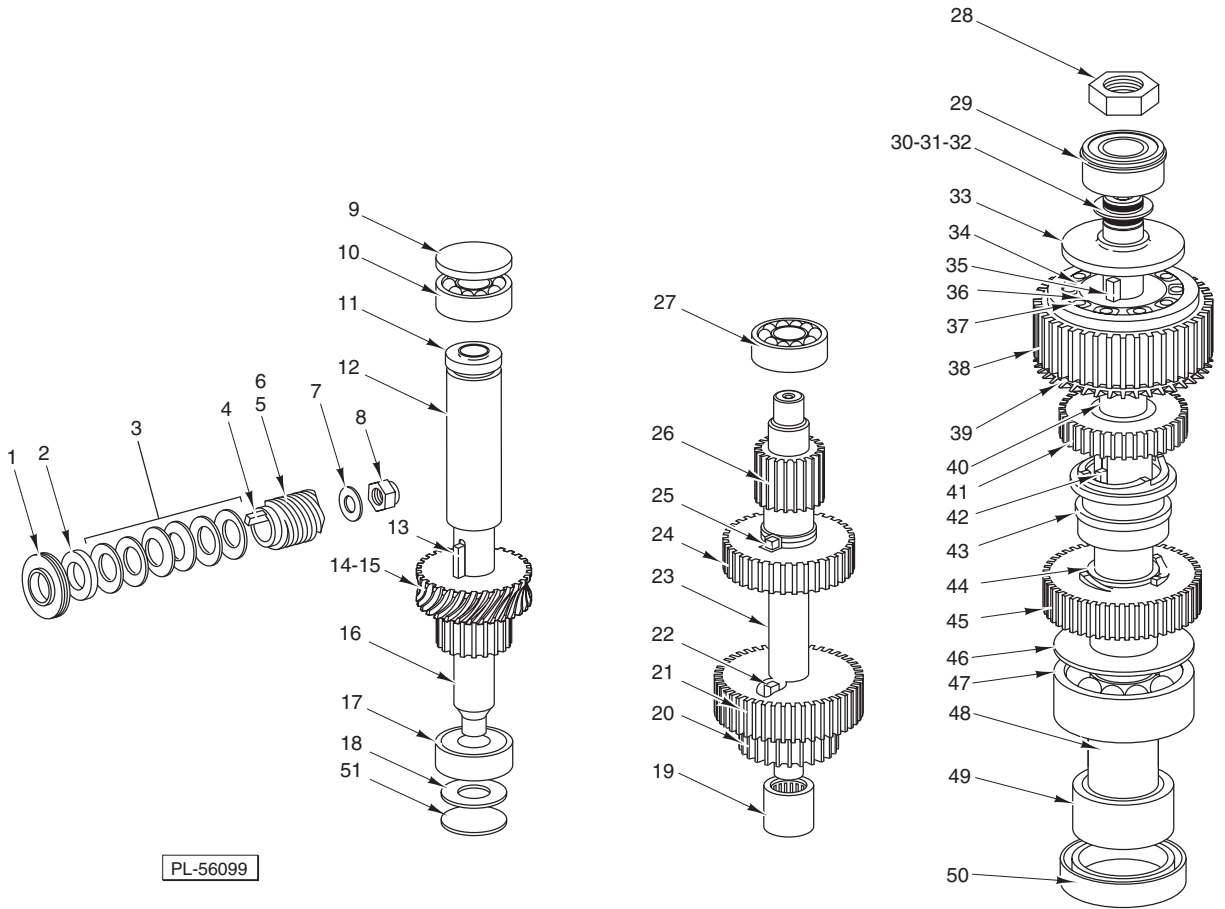
ILLUS.	PART NO.	NAME OF PART	AMT.
PL-56618			
1	00-437288	Fan and Clip	1
2	SC-110-83	Mach. Screw 10-32 x 7 ⁵ / ₈ Hex Hd.	4
3	00-875386-00001	Motor (120-240 V., 60 Hz., Ph. 1)	1
4	00-875386-00001	Motor (220 V., 50 Hz., Ph. 1)	1
5	00-875386-00002	Motor (200-208 V., 60 Hz., Ph. 3)	1
6	00-875386-00003	Motor (200-208 V., 60 Hz., Ph. 1)	1
7	00-875386-00004	Motor (240-460 V., 60 Hz., Ph. 3)	1
8	00-873057	Grease Deflector	1
9	00-077840	Washer – Belleville	6
10	00-877517	Spacer	1
11	NS-032-23	Lock Nut Special 7 ⁷ / ₁₆ -20 Flexloc	1
12	00-291221	Gear – Worm (60 Hz.)	1
13	00-070407	Gear – Worm (50 Hz.)	1



SHIFTER UNIT

SHIFTER UNIT

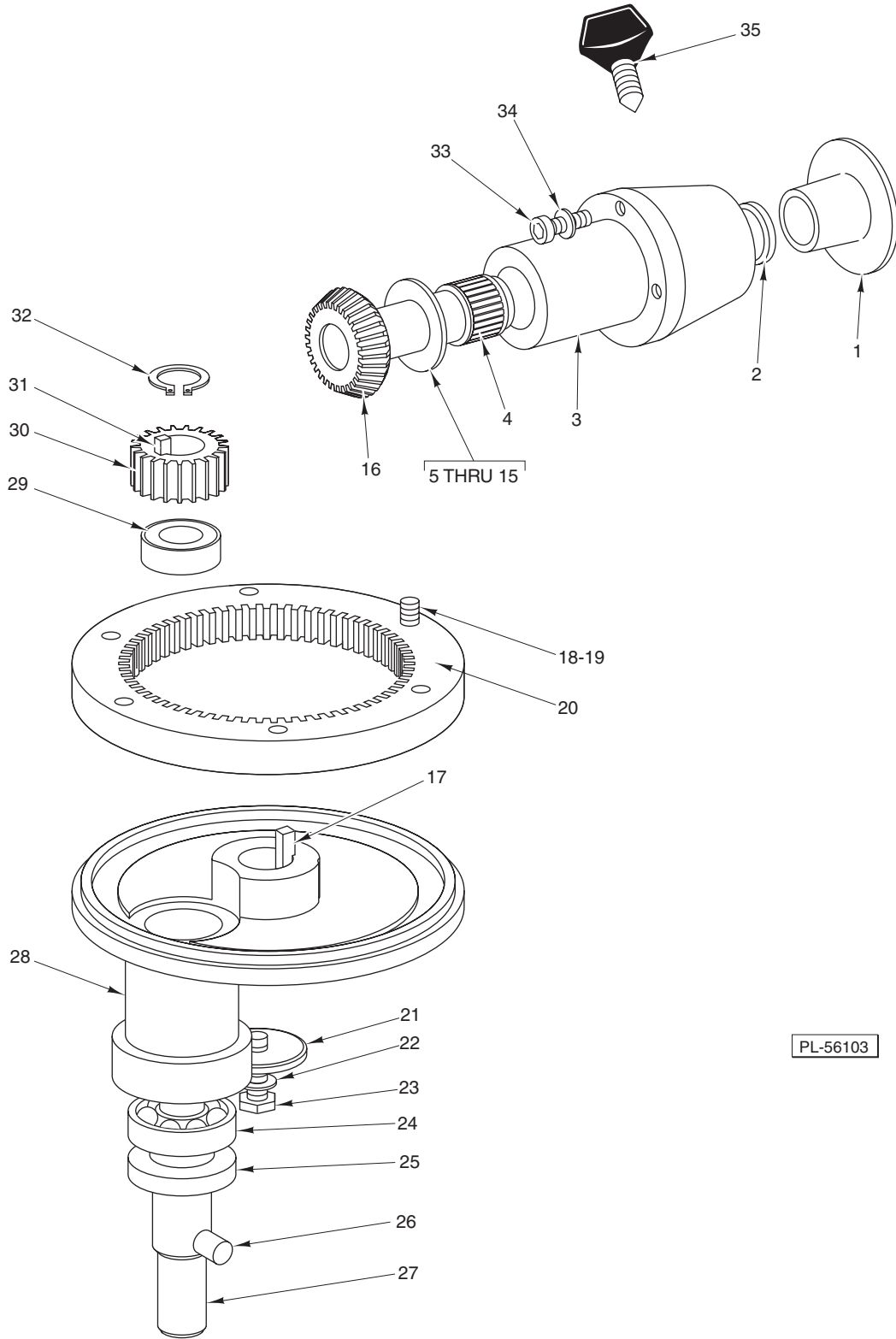
ILLUS. PL-56101	PART NO.	NAME OF PART	AMT.
1	SC-047-17	Set Screw 1/4-20 x 3/4 Hds., Cup Pt.	1
2	00-291272	Shifter Handle Assy. (Incls. Items 1 & 21) (ML-104421)	1
3	00-439306	Shifter Handle Assy. (Pinned) (Incls. Items 1 & 21) (ML-134114)	1
4	00-110961	Grommet – Shifter Handle	1
5	00-875238	Shaft – Shifter	1
6	00-290115-00001	Plate – Index	1
7	00-067500-00044	O-Ring	1
8	00-023946	Gasket – Index Plate	1
9	PS-003-08	Spiral Pin 1/8 Dia. x 3/4 Lg.	1
10	00-873504	Cam – Gear Shifter	1
11	NS-013-22	Nut 3/8-16 Hex	1
12	WL-004-06	Lockwasher 3/8 Helical	1
13	00-070043	Rod – Shifter Guide	1
14	00-013160	Yoke – Shifter	1
15	00-012733	Plunger – Shifter Yoke	2
16	00-012734	Spring – Shifter Yoke	2
17	00-012732	Retainer – Shifter Yoke Spring	2
18	BA-002-09	Ball 1/4 Dia.	2
19	00-111170	Spring – Detent	2
20	SC-014-36	Mach. Screw 6-32 x 1 Slotted Flat Hd.	4
21	00-070085	Knob – Shifter Handle Ball	1
	00-815240	Shifter Sub-Assy. (Incls. Items 5 thru 10, 18, & 19)	1



TRANSMISSION

TRANSMISSION

ILLUS.	PART NO.	NAME OF PART	AMT.
	PL-56099		
1	00-013174-00001	Deflector – Grease (ML-104421 & ML-134114)	1
2	WS-010-36	Washer (ML-104421 & ML-134114)	1
3	00-077840	Washer – Belleville (ML-104421 & ML-134114)	6
4	00-478601	Key (ML-104421 & ML-134114)	1
5	00-291221	Worm (5T) (60 Hz.) (ML-104421 & ML-134114)	1
6	00-070407	Worm (5T) (50 Hz.) (ML-104421 & ML-134114)	1
7	WS-007-09	Washer (ML-104421 & ML-134114)	1
8	NS-032-23	Lock Nut ⁷ / ₁₆ -20 Flexloc (ML-104421 & ML-134114)	1
9	00-070026	Pusher – Bearing	1
10	BB-017-04	Ball Bearing – ND #7501	1
11	00-270526	Spacer	1
12	00-124765-00003	Spacer – Gear	1
13	00-012430-00049	Key	1
14	00-070034	Gear – Worm (29T) (60 Hz.)	1
15	00-070251	Gear – Worm (24T) (50 Hz.)	1
16	00-291130	Shaft – Worm Gear	1
17	BB-017-04	Ball Bearing – ND #7501	1
18	00-070166	Spring – Worm Shaft	1
19	BN-002-02	Needle Bearing	1
20	00-070028	Gear (23T)	1
21	00-070030	Gear (33T)	1
22	00-875419-00060	Key	1
23	00-089829	Spacer	1
24	00-089831	Gear (32T)	1
25	00-875419-00053	Key	1
26	00-875435	Shaft – Transmission	1
27	BB-017-09	Ball Bearing – MRC 2035-01-ST-E-92-C	1
28	NS-032-32	Stop Nut ³ / ₄ -16 (LH Thread) Flexloc	1
29	BB-009-41	Ball Bearing – ND #45505	1
30	WS-012-46	Washer (0.003 Thk.)	AR
31	WS-012-47	Washer (0.010 Thk.)	AR
32	WS-030-79	Washer (0.005 Thk.)	AR
33	00-070015	Spacer – Upper Planetary Shaft	1
34	00-070033	Sleeve – Drive	1
35	00-012430-00161	Key	1
36	00-070039	Roller – Clutch	10
37	00-070055	Spring – Roller	10
38	00-070032	Gear – Roller Clutch (46T)	1
39	00-070020-00002	Gear – Bevel (46T) (Order 75393-2 Also)	1
40	00-070042	Bushing – Upper Clutch Gear	1
41	00-070040	Gear – Upper Clutch (29T)	1
42	00-012430-00055	Key ³ / ₁₆ x ³ / ₁₆ x 1	2
43	00-070035-00001	Sleeve – Clutch	1
44	00-070031	Bushing – Lower Clutch Gear	1
45	00-124743	Gear – Lower Clutch (38T)	1
46	00-070046	Spacer – Lower Planetary Shaft	1
47	BB-008-33	Ball Bearing – Fafnir #205WD	1
48	00-070024	Planetary Shaft	1
49	00-070016	Spacer – Planetary	1
50	00-110334	Seal – Planetary	1
51	PL-003-14	Expansion Plug (Located In Transmission Housing)	1
	00-875436	Transmission Shaft & Gear Unit (Incls. Items 20 thru 26)	1

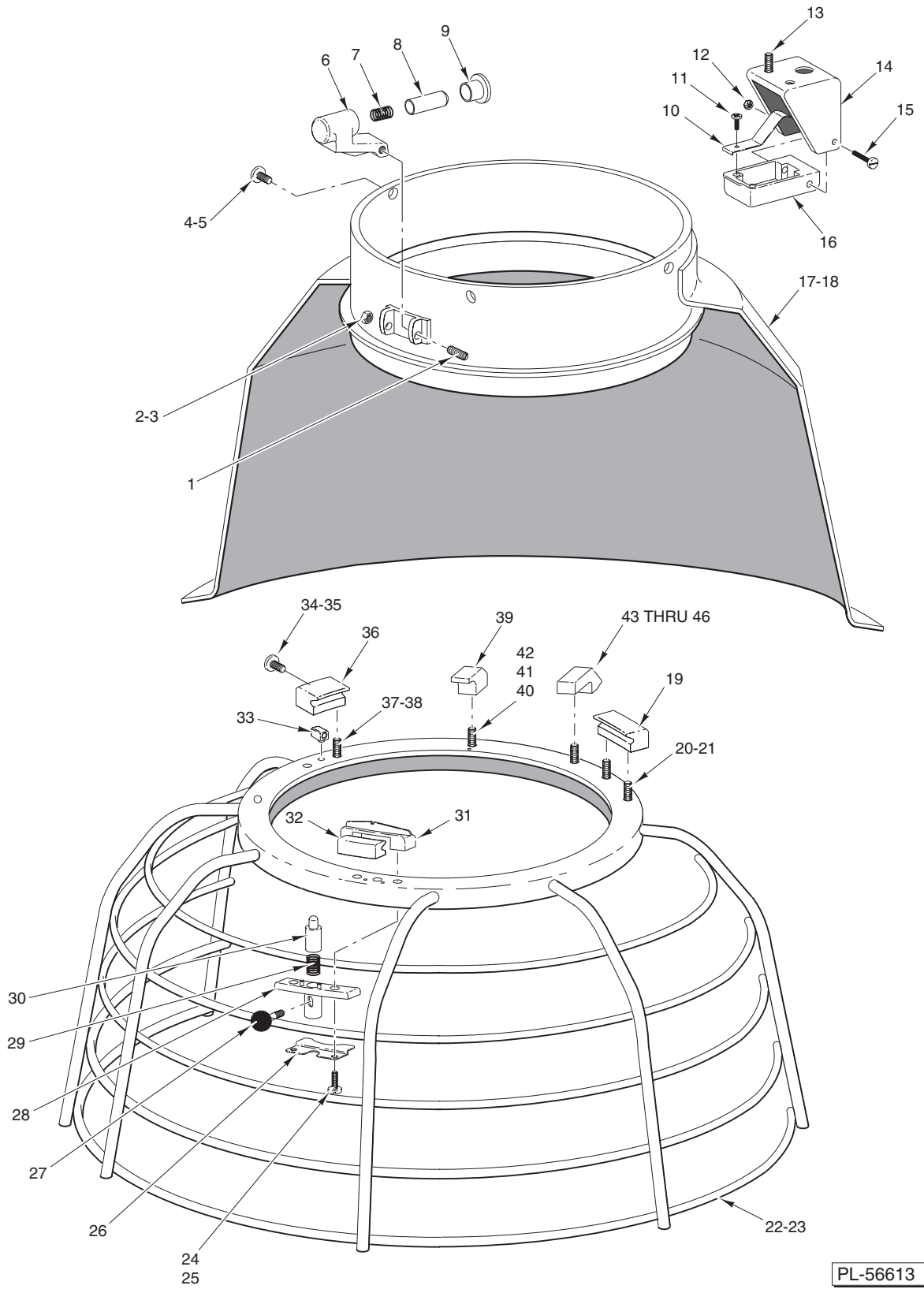


PL-56103

PLANETARY AND ATTACHMENT HUB

PLANETARY AND ATTACHMENT HUB

ILLUS. PL-56103	PART NO.	NAME OF PART	AMT.
1	00-114824-00001	Plug – Attachment Hub	1
2	00-070090	Seal – Attachment Hub	1
3	00-070511-00003	Attachment Hub & Bearings Assy. (Incls. Item 4)	1
4	BN-002-12	Needle Bearing	2
5	00-070045-00001	Washer – Thrust (0.125 Thk.)	AR
6	00-070045-00002	Washer – Thrust (0.119 Thk.)	AR
7	00-070045-00003	Washer – Thrust (0.121 Thk.)	AR
8	00-070045-00004	Washer – Thrust (0.123 Thk.)	AR
9	00-070045-00005	Washer – Thrust (0.127 Thk.)	AR
10	00-070045-00006	Washer – Thrust (0.129 Thk.)	AR
11	00-070045-00009	Washer – Thrust (0.131 Thk.)	AR
12	00-070045-00010	Washer – Thrust (0.133 Thk.)	AR
13	00-070045-00011	Washer – Thrust (0.136 Thk.)	AR
14	00-070045-00012	Washer – Thrust (0.139 Thk.)	AR
15	00-070045-00013	Washer – Thrust (0.116 Thk.)	AR
16	00-075393-00002	Attach Drive Gear (35T) & Expansion Plug Assy. (Order 70020-2 Also)	1
17	00-012430-00158	Key 1/4 Sq. x 1 1/2 Lg.	1
18	SC-040-16	Cap Screw 5/16-18 x 1 Soc. Fil. Hd.	6
19	WL-003-48	Lockwasher 5/16 High Collar	6
20	00-438472	Gear – Internal (59T)	1
21	00-070047-00001	Washer – Planetary	1
22	WL-006-27	Lockwasher 3/8 Light (SST)	1
23	SC-062-58	Cap Screw 3/8-24 x 1 1/4 Hex Hd.	1
24	BB-017-36	Ball Bearing – SKF #6205Z	1
25	00-110335	Seal – Agitator Shaft	1
26	00-070019	Pin – Agitator	1
27	00-070339	Agitator Shaft Assy. (Incls. Item 26)	1
28	00-069990-00001	Planetary	1
29	BB-020-06	Ball Bearing – Fafnir 204KDFA51580	1
30	00-070014	Pinion – Agitator Shaft (18T)	1
31	00-012430-00142	Key 1/4 Sq. x 1 Lg.	1
32	RR-004-06	Retaining Ring	1
33	SC-040-15	Cap Screw 5/16-18 x 1 1/4 Soc. Fil. Hd.	3
34	WL-003-43	Lockwasher 5/16 Light	3
35	00-108197-00001	Thumb Screw	1
	00-113703	Tie – Cable	2

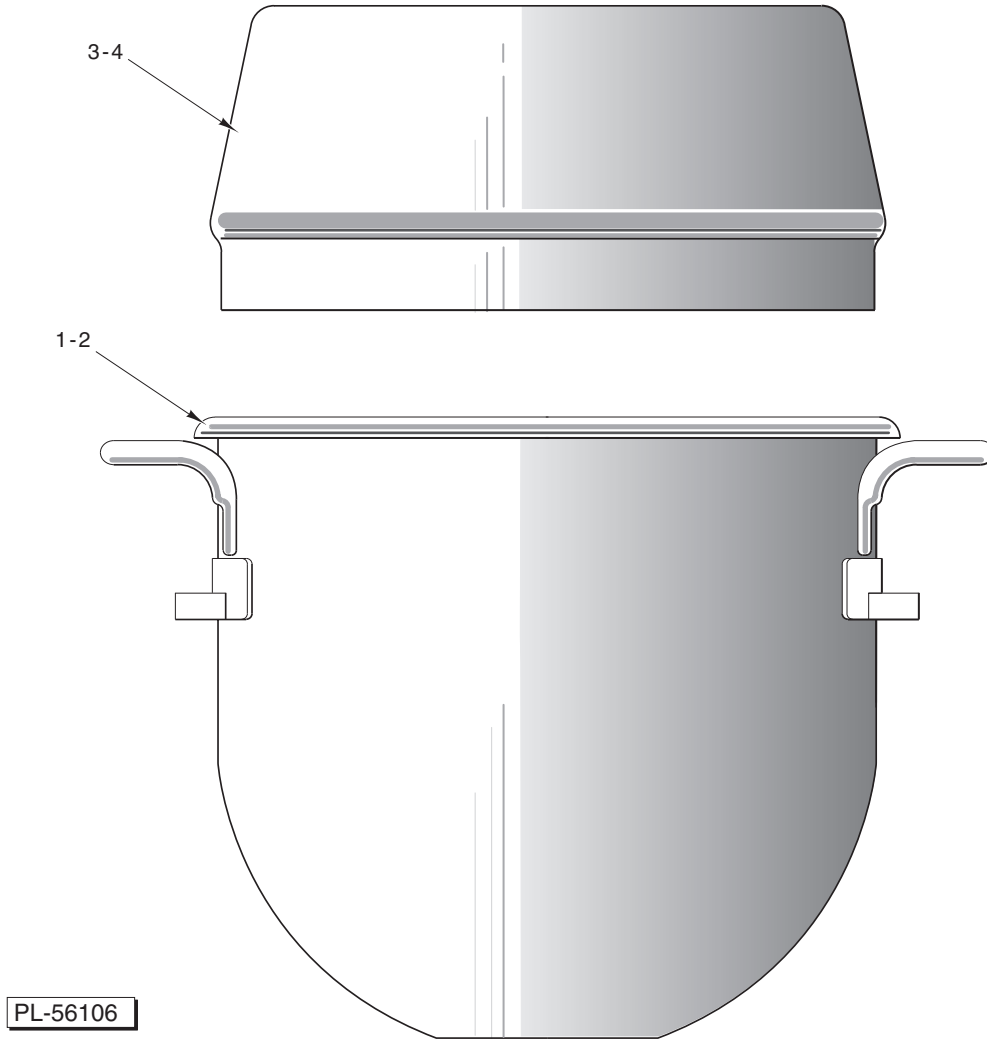


PL-56613

BOWL GUARD UNIT

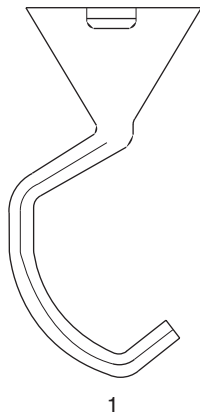
BOWL GUARD UNIT

ILLUS.	PART NO.	NAME OF PART	AMT.
PL-56613			
1	00-478602	Screw – Shouldered Slotted Hd.	1
2	NS-031-50	Stop Nut Special 6-32 (SST) (ML-104421 & ML-134211)	1
3	NS-011-07	Mach. Nut 6-32 Hex (SST) (ML-134114 & ML-134213)	1
4	00-070641-00011	Thumb Screw 8-32 Special (ML-104421 & ML-134211)	3
5	SC-121-91	Mach. Screw 8-32 x 1/4 Hex Button Hd. (SST) (ML-134114 & ML-134213)	3
6	00-479007	Latch – Cage Detent (Incls. Items 7, 8, & 9)	1
7	00-437446-00001	Spring – Cage Detent	1
8	00-437724	Plunger – Detent	1
9	00-437725	Bushing – Detent	1
10	00-437815	Spring – Reed Switch	1
11	SC-018-50	Mach. Screw 6-32 x 1/4 Slotted Pan Hd.	1
12	NS-048-11	Lock Nut Special 8-32 (SST)	1
13	SC-068-14	Mach. Screw 8-32 x 3/8 Hex Hd.	2
14	00-437728-00004	Housing – Reed (Painted)	1
15	SC-122-48	Mach. Screw 8-32 x 1 3/4 Slotted Rd. Hd. (SST)	1
16	00-087711-304-1	Housing – Reed Switch	1
17	00-437802	Splash Guard & Latch Assy. (Painted) (Incls. Items 1, 2, & 6) (ML-104421 & ML-134211)	1
18	00-439658	Splash Guard & Latch Assy. (Incls. Items 1, 3, & 6) (ML-134114 & ML-134213)	1
19	00-437713	Shoe – Fixed	1
20	SC-122-45	Mach. Screw Special 1/4-20 x 3/8 Slotted Truss Hd. (SST) (ML-104421 & ML-134211)	2
21	SC-122-52	Mach. Screw Special 1/4-20 x 3/8 Hex Button Hd. (SST) (ML-134114 & ML-134213)	2
22	00-437819	Wire Cage Assy. (ML-104421 & ML-134211)	1
23	00-439659	Wire Cage Assy. (ML-134114 & ML-134213)	1
24	SC-122-46	Mach. Screw Special 1/4-20 x 3/4 Slotted Truss Hd. (SST) (ML-104421 & ML-134211)	2
25	SC-122-68	Mach. Screw 1/4-20 x 3/4 Hex Button Hd. (SST) (ML-134114 & ML-134213)	2
26	00-437817	Stop – Cage	1
27	00-437436	Pin – Plunger	1
28	00-437799	Housing – Plunger	1
29	00-437446-00002	Spring – Cage On/Off	1
30	00-437432	Plunger	1
31	00-437718-00002	Saddle – Shoe	1
32	00-437715	Shoe – Saddle	1
33	00-437720	Key – Shoe	1
34	SC-123-07	Mach. Screw Special 8-20 x 1/2 Slotted Truss Hd. (SST) (ML-104421 & ML-134211)	1
35	SC-121-92	Mach. Screw Special 8-32 x 3/8 Hex Button Hd. (SST) (ML-134114 & ML-134213)	1
36	00-437714	Shoe – Adjustable	1
37	SC-122-45	Mach. Screw Special 1/4-20 x 3/8 Slotted Truss Hd. (SST) (ML-104421 & ML-134211)	2
38	SC-122-52	Mach. Screw Special 1/4-20 x 3/8 Hex Button Hd. (SST) (ML-134114 & ML-134213)	2
39	00-437816	Block – Rear Guide	1
40	SC-122-44	Mach. Screw Special 8-32 x 3/8 Slotted Truss Hd. (SST) (ML-104421 & ML-134211)	1
41	SC-121-92	Mach. Screw Special 8-32 x 3/8 Hex Button Hd. (SST) (ML-134114 & ML-134213)	1
42	00-512987	Adhesive (ML-134114 & ML-134213)	AR
43	00-437719	Retainer – Magnet	1
44	00-111941	Magnet	1
45	SC-122-44	Mach. Screw Special 8-32 x 3/8 Slotted Truss Hd. (SST) (ML-104421 & ML-134211)	1
46	SC-121-92	Mach. Screw Special 8-32 x 3/8 Hex Button Hd. (SST) (ML-134114 & ML-134213)	1
	00-438607	Ingredient Chute	1
	00-437828	Reed Assy. (Incls. Items 10, 11, & 16)	1
	00-437803	Cage Assy. (Incls. Items 19, 20, 22, 24, 26 thru 34, 36, 37, 39, 40, 43, & 45) (ML-104421 & ML-134211)	1
	00-439657	Cage Assy. (Incls. Items 19, 21, 23, 25 thru 33, 35, 36, 38, 39, 41, 42, 43, & 46) (ML-134114 & ML-134213)	1

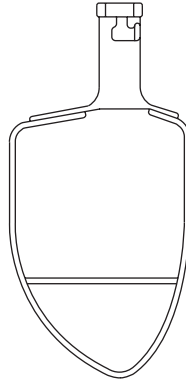


BOWL

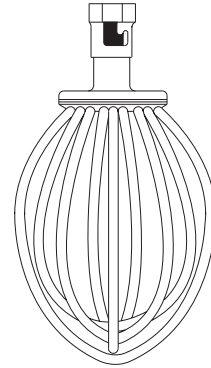
ILLUS.	PART NO.	NAME OF PART	AMT.
PL-56106			
1	00-437410	Bowl – 30 Qt. (SST) (Packaged)	1
2	00-295647	Bowl – 20 Qt. (SST) (Packaged)	1
3	00-438080	Splash Cover Assy. – 30 Qt. (Packaged)	1
4	00-438079	Splash Cover Assy. – 20 Qt. (Packaged)	1
	00-438607	Scraper – Bowl (Packaged)	1



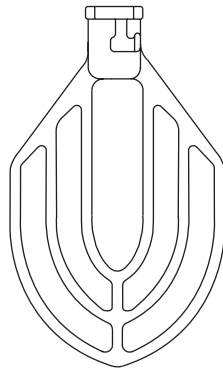
1



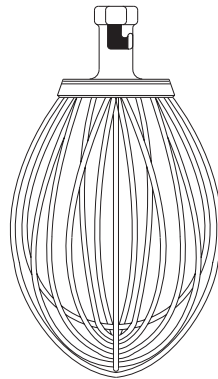
2



3

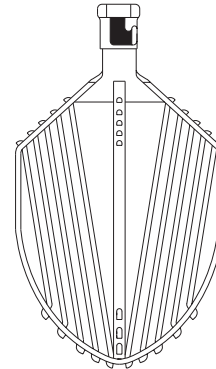


4-5



6

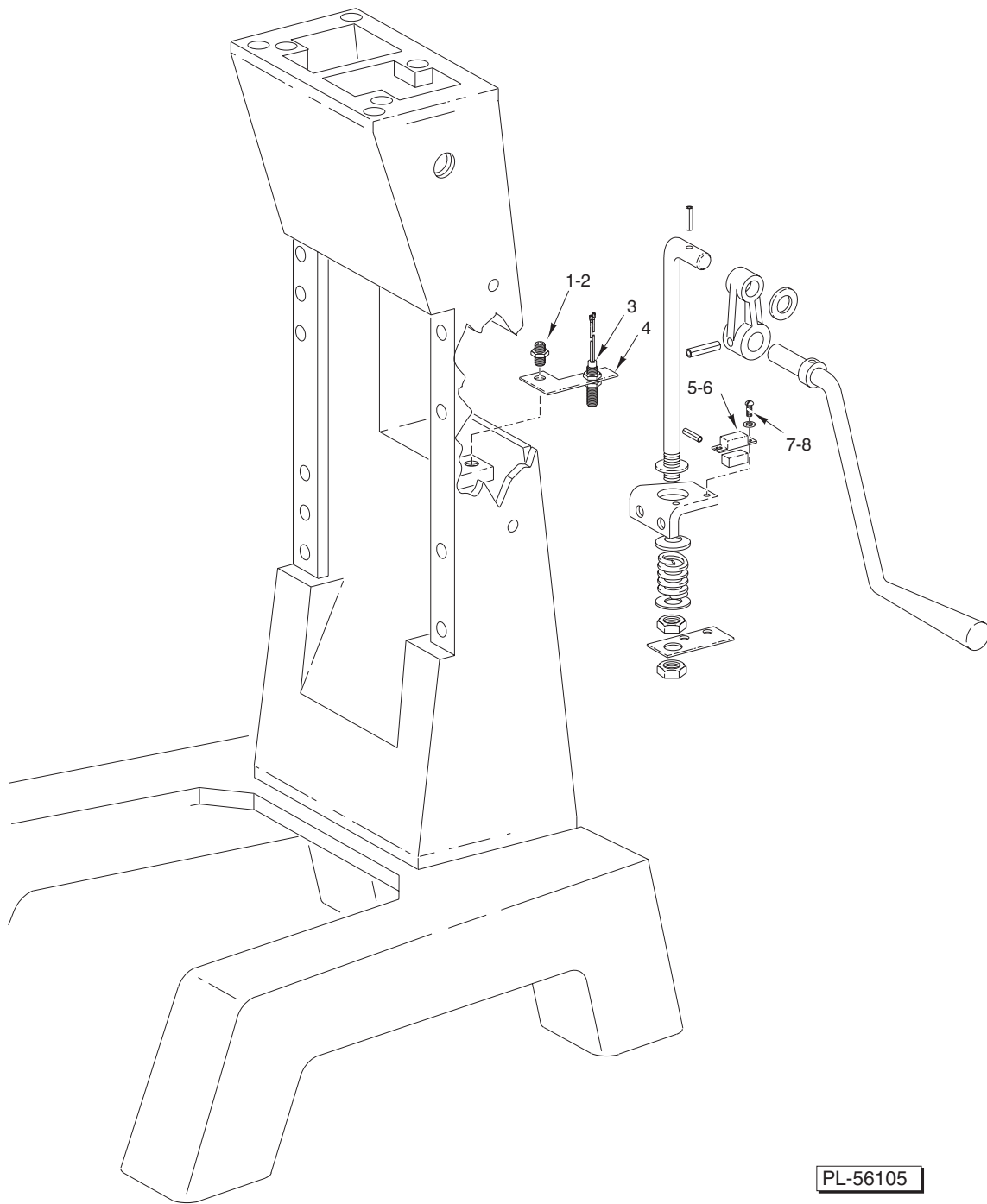
PL-56612



7

AGITATORS

ILLUS.	PART NO. 30 Qt.	PART NO. 20 Qt.	NAME OF PART	AMT.
1	00-295120	00-275465	"E" Dough Arm (Alum.) (Packaged)	1
2	00-295037	---	"P" Pastry Knife (Packaged)	1
3	00-295163	---	"I" Wire Whip (SST) (Packaged)	1
4	00-275450	00-275461	"B" Flat Beater (Alum.) (Packaged)	1
5	00-275451	00-275462	"B" Flat Beater (SST) (Packaged)	1
6	00-275899	00-295029	"D" Wire Whip (SST) (Packaged)	1
7	00-295161	---	"C" Wing Whip (Packaged)	1
	00-478596	---	"ED" Dough Arm – Spiral (Not Shown) (Packaged)	1



BOWL HEIGHT SENSING UNIT

ILLUS.	PART NO.	NAME OF PART	AMT.
PL-56105			
1	SC-047-46	Set Screw 3/8-16 x 1 1/4 Soc. Hdls., Half-Dog Pt.	1
2	NS-017-15	Jam Nut 3/8-16 Hex	1
3	00-087711-306-1	Switch – Bowl Height Sensing	1
4	00-438387	Bracket – Bowl Height Sensor	1
5	00-120332	Retainer – Magnet	1
6	00-111941	Magnet	1
7	SC-021-01	Mach. Screw 4-40 x 1/4 Slotted Rd. Hd. (SST)	2
8	WL-003-01	Lockwasher #4 Light	2
	00-065890-00029	Connector – Insulated	1