



CATALOG OF

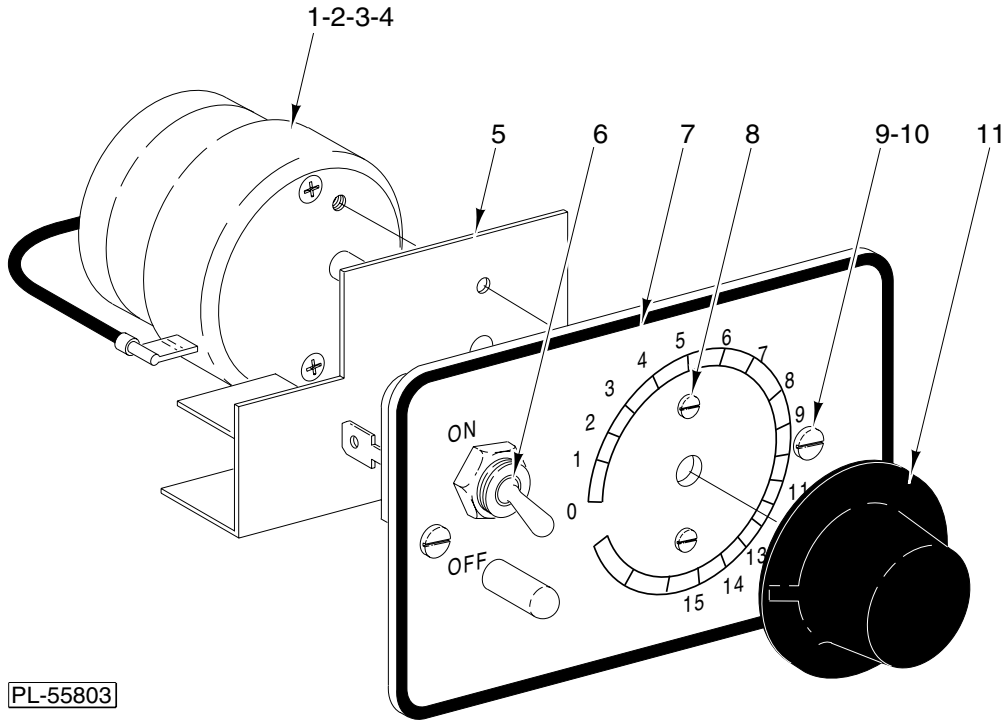
REPLACEMENT PARTS



MODEL A200 SERIES MIXER

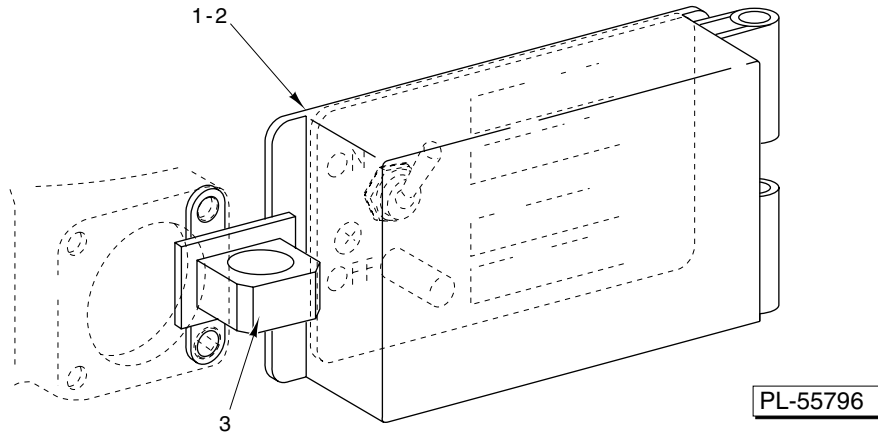
(INCLUDES MOTOR PARTS)

A200	ML-104858
A200 DT	ML-104863
A200 FT	ML-104861
A200 C	ML-134091



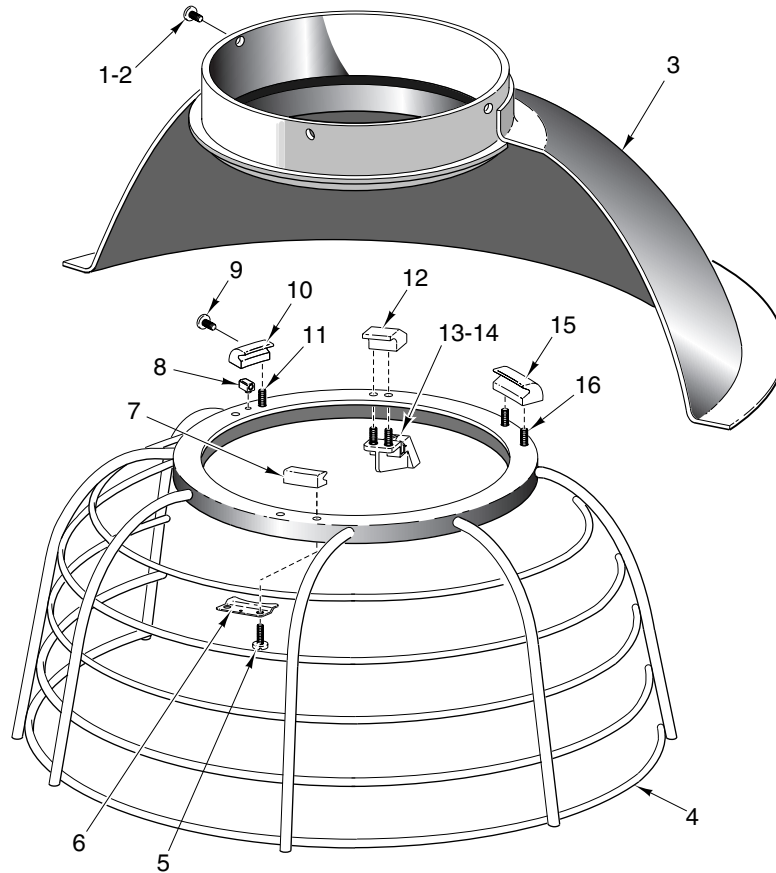
SWITCH AND TIMER UNIT

ILLUS.	PART NO.	NAME OF PART	AMT.
PL-55803			
1	00-294650-004-1	Timer Assy. (115 V., 60 Hz.)	1
2	00-294650-004-2	Timer Assy. (200/300 V., 60 Hz.)	1
3	00-294650-004-3	Timer Assy. (115 V., 50 Hz.)	1
4	00-294650-004-4	Timer Assy. (220 V., 50 Hz.)	1
5	00-291746	Insulator – Switch	1
6	00-120388	Switch & Label Assy.	1
7	00-873115-00001	Switch Plate & Pin Assy.	1
8	SC-013-07	Mach. Screw 5-40 x 1/4 Flat Hd.	2
9	00-123109	Screw 6-32 x 3/8 Serrated Hd. (Painted and Deluxe)	2
10	SC-121-90	Mach. Screw 6-32 x 3/8 Button Hex Hd. (SST) (ML-134091)	2
11	00-291748	Knob – Timer	1



**CORRECTIONAL COVER
(ML-134091 ONLY)**

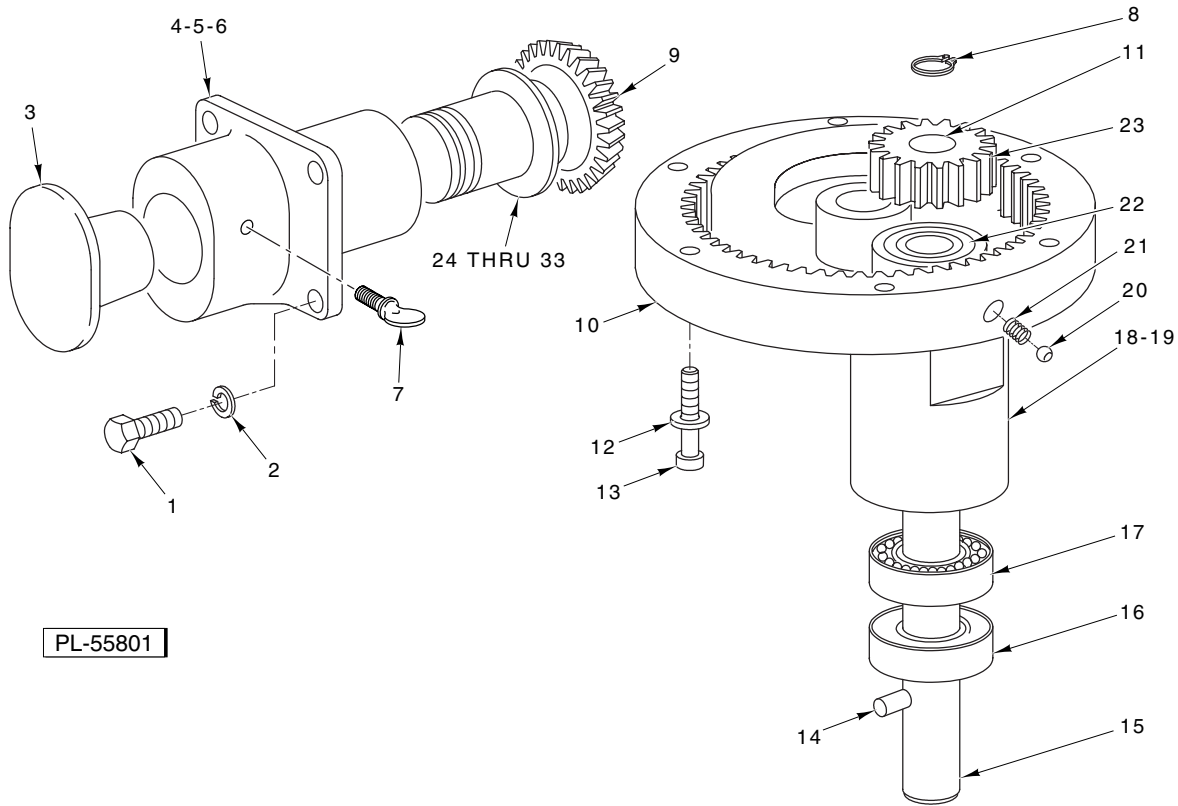
ILLUS.	PART NO.	NAME OF PART	AMT.
PL-55796			
1	00-875153	Cover	1
2	SC-122-76	Mach. Screw 8-32 x 1/2 Button Hex Hd. (SST)	3
3	00-438151	Hasp - Plate	1



PL-55793

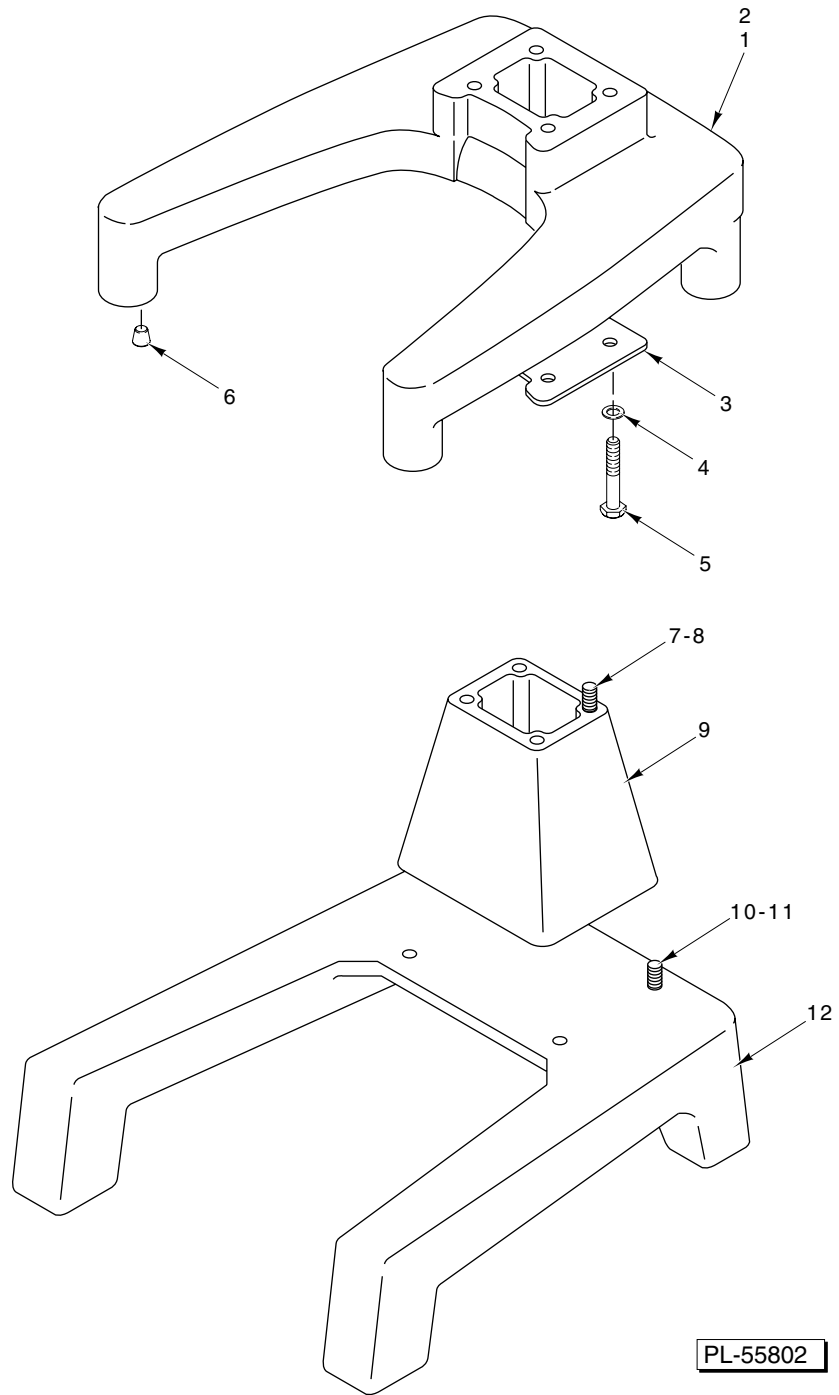
BOWL GUARD UNIT

ILLUS.	PART NO.	NAME OF PART	AMT.
	PL-55793		
1	SC-066-13	Mach. Screw 8-32 x 1/4 Phil. Truss Hd. (Painted and Deluxe)	3
2	SC-121-91	Mach. Screw 8-32 x 1/4 Button Hex Hd. (SST) (ML-134091)	3
3	00-438533	Guard & Drip Cup Assy.	1
4	00-438523	Wire Cage Weldment	1
5	SC-122-44	Mach. Screw Special 8-32 x 3/8 Truss Hd.	2
6	00-438530	Stop - Cage	1
7	00-438527-00001	Shoe - Front	1
8	00-438526	Key - Shoe	1
9	SC-122-82	Mach. Screw 4-40 x 7/16 Oval Hd., Special	1
10	00-438527-00003	Shoe - Adjustable	1
11	SC-122-44	Mach. Screw - Special 8-32 x 3/8 Truss Hd.	2
12	00-438539	Bumper - Cage	1
13	00-438525	Retainer - Magnet	1
14	SC-122-83	Mach. Screw 6-32 x 3/8 Truss Hd., Special	2
15	00-438527-00002	Shoe - Fixed	1
16	SC-122-44	Mach. Screw - Special 8-32 x 3/8 Truss Hd.	2



PLANETARY AND ATTACHMENT HUB UNIT

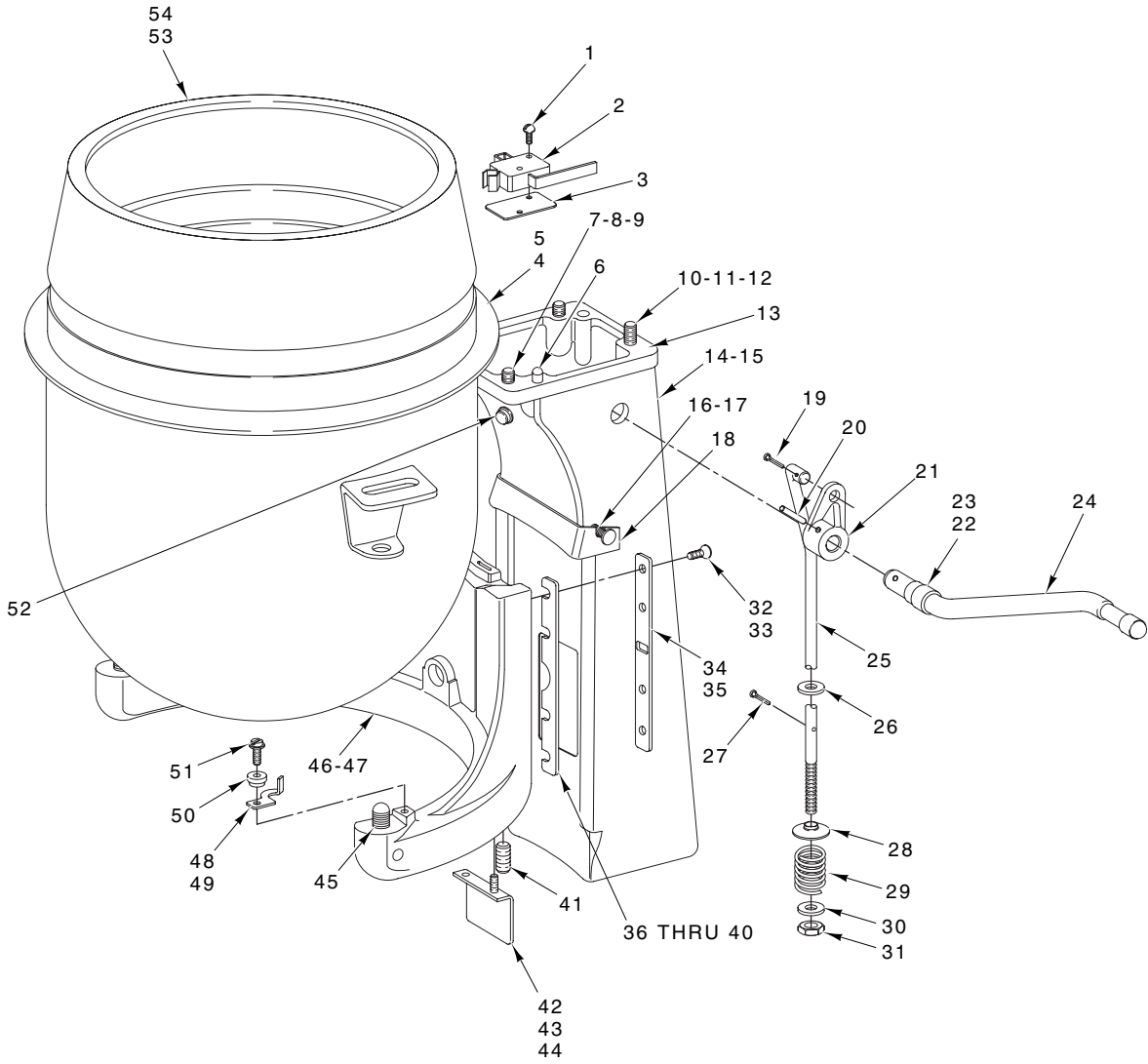
ILLUS.	PART NO.	NAME OF PART	AMT.
PL-55801			
1	SC-119-07	Mach. Screw 12-24 x 3/4 Flat Hd. (Painted)	4
2	WL-019-79	Lockwasher	4
3	00-114824-00001	Plug – Attachment Hub	1
4	00-435047-00004	Hub – Attachment (Painted)	1
5	00-435047-00006	Hub – Attachment (Deluxe)	1
6	00-435047-00001	Hub – Attachment (ML-104901)	1
7	00-108197-00001	Thumb Screw	1
8	RR-004-18	Retaining Ring	1
9	00-435065-00002	Bevel Drive Gear & Seal Assy.	1
10	00-438524-00002	Internal Gear (63T) (Incls. Items 20 & 21)	1
11	00-012430-00055	Key 3/16 X 3/16 X 1	1
12	WL-003-35	Lockwasher 1/4 Helical	6
13	SC-040-09	Cap Screw 1/4-20 x 1 1/4 Fil. Hd.	6
14	00-065062-00001	Pin	1
15	00-113936	Agitator Shaft Assy. (Incls. Item 14)	1
16	00-023482	Seal – Oil (1" I.D.)	1
17	BB-005-34	Ball Bearing (N.D. #7504)	1
18	00-023166-00001	Planetary (Painted)	1
19	00-023166-00006	Planetary (Deluxe)	1
20	BA-002-09	Ball 1/4 Dia.	2
21	00-007094	Spring	2
22	BB-018-17	Ball Bearing (N.D. #7503)	1
23	00-015217	Pinion – Beater (19T)	1
24	00-012746-00019	Washer – Thrust (0.115)	AR
25	00-012746-00005	Washer – Thrust (0.080)	AR
26	00-012746-00006	Washer – Thrust (0.106)	AR
27	00-012746-00007	Washer – Thrust (0.092)	AR
28	00-012746-00008	Washer – Thrust (0.086)	AR
29	00-012746-00009	Washer – Thrust (0.098)	AR
30	00-012746-00010	Washer – Thrust (0.112)	AR
31	00-012746-00012	Washer – Thrust (0.119)	AR
32	00-012746-00013	Washer – Thrust (0.121)	AR
33	00-012746-00016	Washer – Thrust (0.129)	AR
	00-102778-00001	Planetary Assy. (Painted) (Incls. Items 8, 11, 15 thru 18, 22, & 23)	1



BASE UNIT

BASE UNIT

ILLUS.	PART NO.	NAME OF PART	AMT.
PL-55802			
1	00-873229-00003	Base (Painted) (Bench)	1
2	00-873232-00002	Base (Deluxe)	1
3	00-108159	Screen – Air	1
4	WS-018-19	Washer (Bench) (Painted and Deluxe)	4
5	SC-097-53	Cap Screw ³ / ₈ -16 x 2 ¹ / ₄ Hex Hd. (Bench) (Painted and Deluxe)	4
6	00-110717-00001	Plug – Base (Plug for Foot Pads) (Packed 8)	1
7	WS-018-19	Washer (Floor)	4
8	SC-062-27	Cap Screw ³ / ₈ -16 x 1 ³ / ₄ Hex Hd. (Floor)	4
9	00-074998-00001	Block – Riser (Painted) (Floor)	1
10	WS-018-19	Washer (Floor)	8
11	SC-118-10	Cap Screw ³ / ₈ -16 x 1 Hex Hd. (Floor)	8
12	00-291499-00003	Base (Painted) (Floor)	1

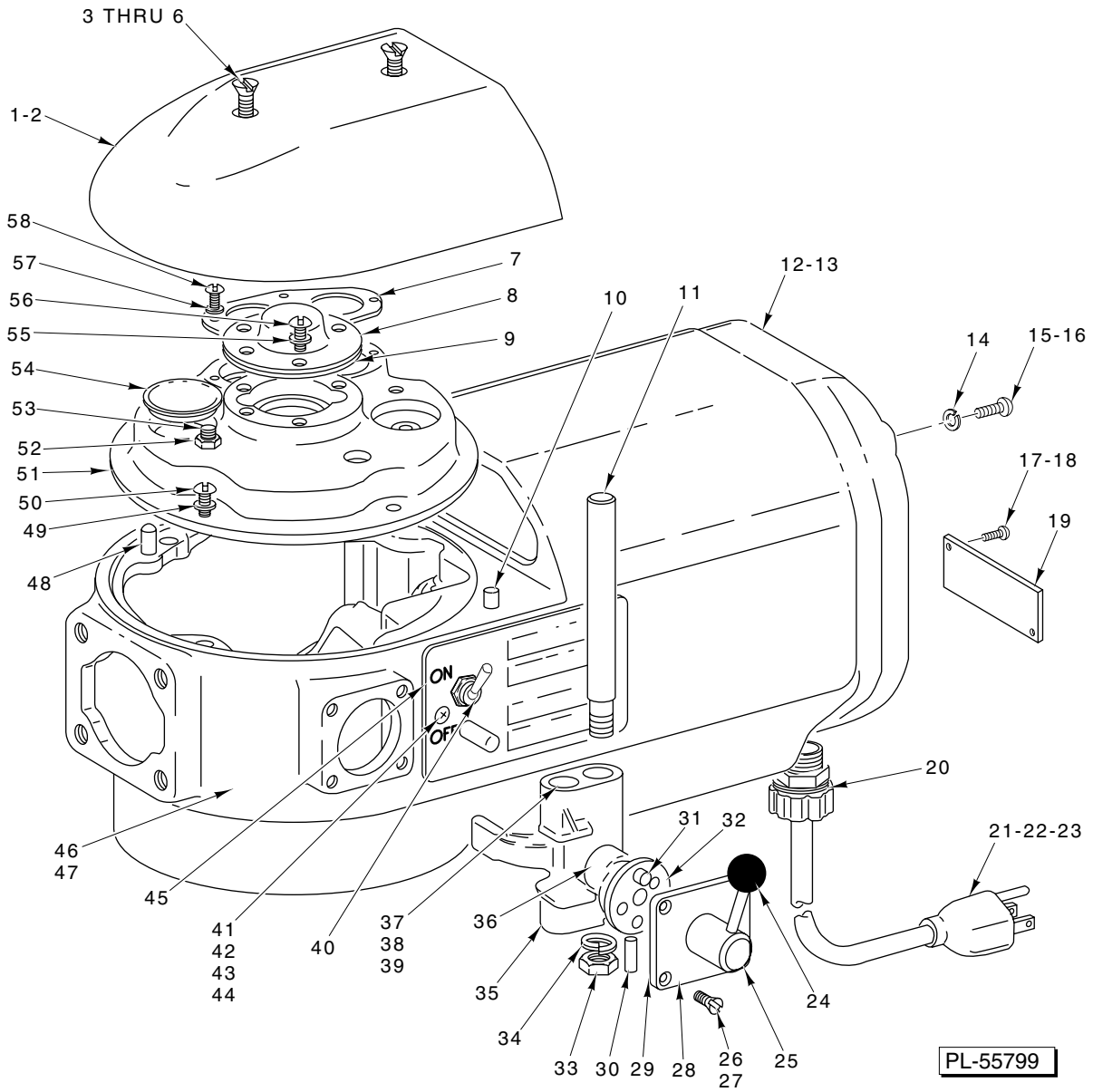


PL-55800

PEDESTAL AND BOWL UNIT

PEDESTAL AND BOWL UNIT

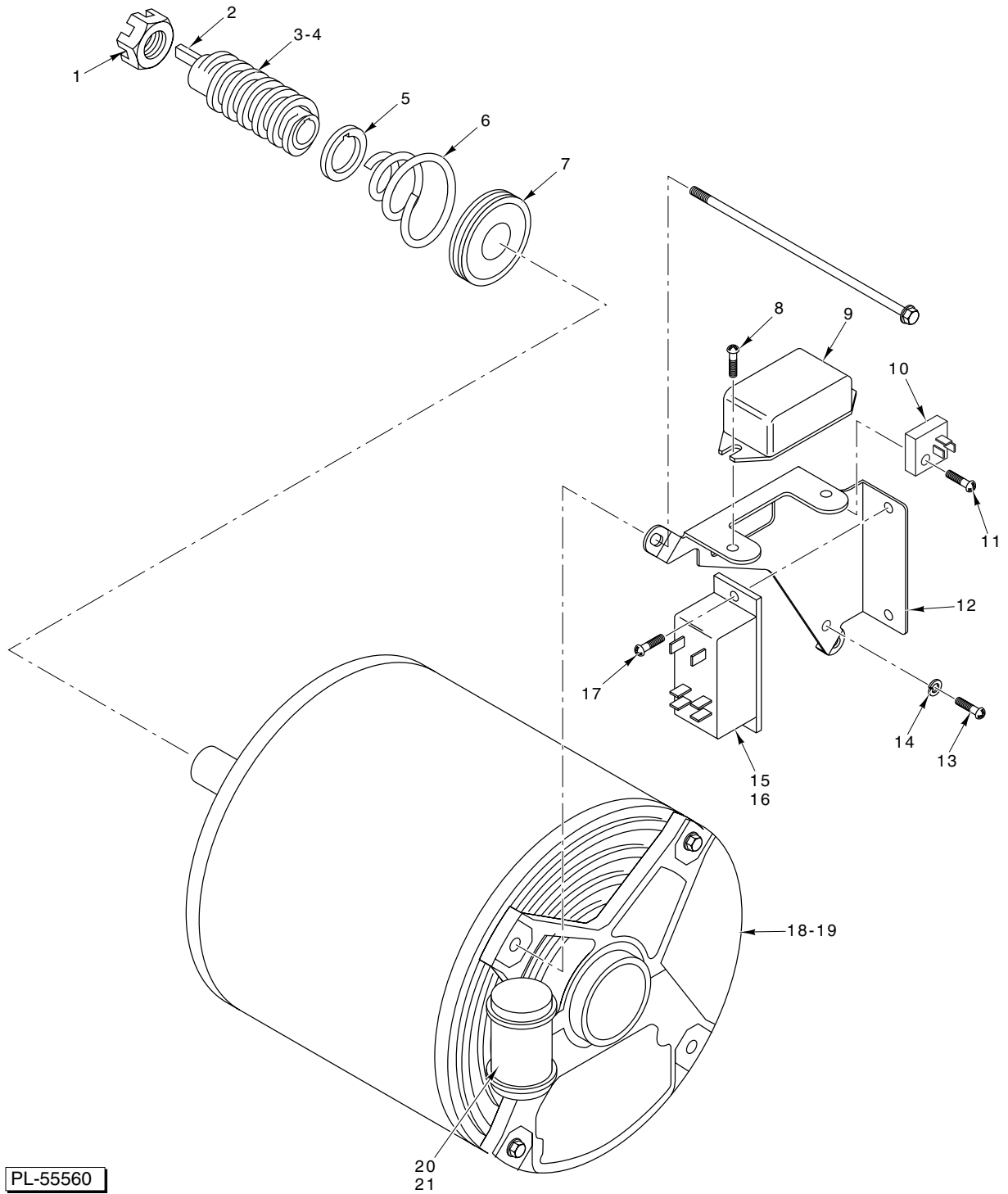
ILLUS.	PART NO.	NAME OF PART	AMT.
PL-55800			
1	SC-060-40	Mach. Screw 4-40 x 5/8 Rd. Hd.	2
2	00-087711-00248	Switch – Bowl Height	1
3	00-439892	Insulator – Switch	1
4	00-275683	Bowl Assy. (20 Qt.) (SST)	1
5	00-295644	Bowl Assy. (12 Qt.) (SST)	1
6	00-270776	Dowel	2
7	WL-006-22	Lockwasher 5/16 Light	2
8	SC-041-13	Cap Screw 5/16-18 x 1 Hex Hd. (SST) (Painted)	2
9	SC-120-38	Cap Screw 5/16-18 x 1 Hex Hd. (Deluxe)	2
10	WL-006-22	Lockwasher 5/16 Light	2
11	SC-011-95	Mach. Screw 5/16-18 x 1 Fil. Hd. (Painted)	2
12	SC-123-34	Mach. Screw 5/16-18 x 1 Slotted Fil. Hd. (Deluxe)	2
13	00-873232-00001	Shim (Deluxe)	AR
14	00-438543-00002	Pedestal (Painted)	1
15	00-438543-00004	Pedestal (Deluxe)	1
16	00-070641-00011	Thumb Screw 8-32 Special (Painted and Deluxe)	2
17	SC-121-91	Mach. Screw 8-32 x 1/4 Button Hex Hd. (SST) (ML-134091)	2
18	00-078506	Shield – Upper Splash	1
19	PC-003-55	Cotter Pin 1/8 x 3/4	1
20	PS-004-15	Spiral Pin 1/4 Dia. x 1 1/8 Lg.	1
21	00-114430	Arm – Bowl Lift	1
22	WS-009-11	Washer (STL)	AR
23	WS-009-13	Washer (Fiber)	AR
24	00-438528	Lift Handle Assy.	1
25	00-015215	Rod – Bowl Lift	1
26	WS-006-33	Washer	2
27	PC-003-55	Cotter Pin 1/8 x 3/4	1
28	00-012745	Washer – Special	1
29	00-012782	Spring	1
30	WS-006-26	Washer	1
31	NS-036-15	Stop Nut 3/8-24 Hex Special	1
32	SC-022-20	Mach. Screw 10-24 x 5/8 Flat Hd. (Painted)	6
33	SC-014-55	Mach. Screw 10-24 x 5/8 Slotted Flat Hd. (Deluxe)	6
34	00-111213-00001	Gib – Bowl Support (Painted)	2
35	00-111213-00004	Gib – Bowl Support (Deluxe)	2
36	00-113016-00001	Shim – Bowl Support (0.003" Thk.)	AR
37	00-113016-00004	Shim – Bowl Support (0.009" Thk.)	AR
38	00-113016-00005	Shim – Bowl Support (0.015" Thk.)	AR
39	00-113016-00006	Shim – Bowl Support (0.005" Thk.)	AR
40	00-113016-00007	Shim – Bowl Support (0.0075" Thk.)	AR
41	00-121625	Set Screw – Special	1
42	SC-060-56	Mach. Screw 10-32 x 5/16 Rd Hd. (Painted and Deluxe)	2
43	SC-121-37	Mach. Screw 10-32 x 1/2 Button Hex Hd. (SST) (ML-134091)	2
44	00-078505	Shield – Lower Splash	1
45	00-478582	Pin – Bowl Locating	2
46	00-438538-00001	Bowl Support Assy. (Incls. Item 41) (Painted)	1
47	00-084853-00005	Bowl Support Assy. (Incls. Item 41) (Deluxe)	1
48	00-291444-00001	Clamp – Bowl (LH)	1
49	00-291444-00002	Clamp – Bowl (RH, Shown)	1
50	00-291263	Washer – Belleville	6
51	00-274614	Screw – Pivot	2
52	00-087711-252-1	Switch – Reed	1
53	00-438079	Splash Cover & Bowl Extension (20 Qt.)	1
54	00-438078	Splash Cover & Bowl Extension (12 Qt.)	1



TRANSMISSION CASE AND SHIFTER UNIT

TRANSMISSION CASE AND SHIFTER UNIT

ILLUS.	PART NO.	NAME OF PART	AMT.
PL-55799			
1	00-018231-00003	Cover – Transmission Case (Painted)	1
2	00-439398-00002	Cover – Transmission Case (Deluxe)	1
3	SC-016-17	Mach. Screw 12-24 x 1¼ Oval Hd. (Painted and Deluxe)	2
4	SC-121-98	Mach. Screw 12-24 x 1¼ Flat Hex Hd. (SST) (ML-134091)	1
5	SC-121-99	Mach. Screw 12-24 x 1½ Flat Hex Hd. (SST) (ML-134091)	1
6	NS-009-36	Mach. Nut 12-24 Hex	2
7	00-012708	Retainer – Twin Bearing	1
8	00-020394-00001	Cap – Bearing Retainer	1
9	00-020395	Retainer – Bearing	1
10	00-011800-00061	Dowel	2
11	00-012735	Rod – Shifter Guide	1
12	00-873802-00005	Cover – Back (Painted)	1
13	00-873802-00006	Cover – Back (Deluxe)	1
14	WL-003-28	Lockwasher #12 Light	4
15	SC-127-85	Mach. Screw 12-24 x 2½ Pan Hd. (Painted and Deluxe)	4
16	00-479486	End Cap Screw (ML-134091)	4
17	SC-009-49	Mach. Screw 6-32 x ¾ Rd. Hd. (Painted and Deluxe)	2
18	SC-121-90	Mach. Screw 6-32 x ¾ Button Hex Hd. (SST) (ML-134091)	2
19	00-115231-00002	Cover – Conduit	1
20	FE-022-84	Strain Relief ½ NPT	1
21	00-117542-00081	Cord & Plug Assy. (3 Cnd., Under 150 V.)	1
22	00-117542-00082	Cord & Plug Assy. (3 Cnd., 200-250 V.)	1
23	00-117542-00080	Cord Assy. (I.E.C.)	1
24	00-077401	Knob – Shifter Handle	1
25	00-875241	Handle – Shifter (Incls. Item 24)	1
26	SC-015-34	Mach. Screw 10-24 x ½ (Painted and Deluxe)	4
27	SC-121-95	Mach. Screw 10-24 x ⅝ Flat Hex Hd. (SST) (ML-134091)	4
28	00-290115-00001	Plate – Shifter Index	1
29	00-023946	Gasket – Shifter Index Plate	1
30	PS-003-08	Spiral Pin ⅛ Dia. x ¾ Lg.	1
31	BA-002-09	Ball ¼ Dia.	2
32	00-111170	Spring – Detent	2
33	NS-013-22	Nut ¾-16 Hex	1
34	WL-004-06	Lockwasher ⅜ Medium	1
35	00-013160	Yoke – Shifter	1
36	00-873504	Cam – Gear Shifter	1
37	00-012733	Plunger – Shifter Yoke	2
38	00-012734	Spring – Shifter Yoke	2
39	00-012732	Retainer – Shifter Yoke Spring	2
40	00-087711-143-1	Switch – Toggle (NVR)	1
41	00-123109	Screw 6-32 x ⅜ Serrated Hd.	2
42	SC-027-28	Mach. Screw 8-32 x ¼ Rd. Hd. (Ground Screw)	1
43	WL-011-01	Lockwasher #8 Internal Shakeproof (Ground Screw) (1 Ph.)	2
44	NS-010-11	Mach. Nut 8-32 Hex (Ground Screw) (1 Ph.)	1
45	00-873115-00002	Switch Plate & Pin Assy.	1
46	00-873140-00001	Case – Transmission (Incls. Items 10 & 48) (Painted)	1
47	00-479742-00004	Case – Transmission (Incls. Items 10 & 48) (Deluxe)	1
48	00-011800-00116	Dowel	1
49	WL-003-28	Lockwasher #12 Light	4
50	SC-119-07	Mach. Screw 12-24 x ¾ Hex Hd.	4
51	00-067750	Transmission Shaft Support & Screw Assy. (Incls. Items 52 & 53)	1
52	NS-009-36	Mach. Nut 12-24 Hex	1
53	SC-008-56	Mach. Screw 12-24 x ½ Rd. Hd.	1
54	00-064871	Plug – Friction	2
55	WL-003-28	Lockwasher #12 Light	3
56	SC-008-48	Mach. Screw 12-24 x ½ Rd. Hd.	3
57	WL-003-22	Lockwasher #10 Light	4
58	SC-018-01	Mach. Screw 10-24 x ⅜ Pan Hd.	4
	00-875249	Shifter Assy. (Incls. Items 25, 28, 30, 31, 32, & 36)	1

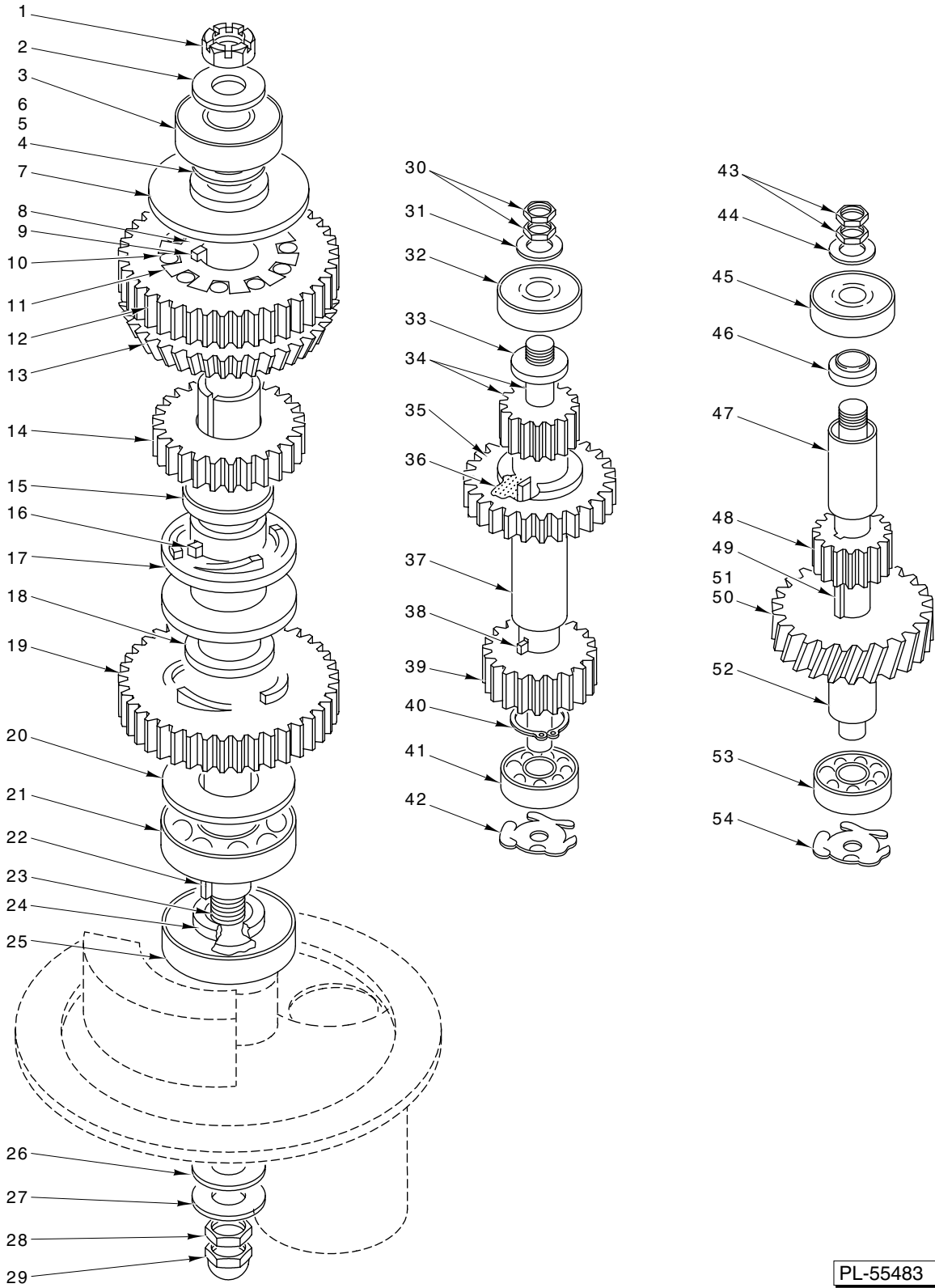


PL-55560

MOTOR PARTS

MOTOR PARTS

ILLUS.	PART NO.	NAME OF PART	AMT.
PL-55560			
1	NS-032-23	Lock Nut	1
2	00-012430-00004	Key $\frac{1}{8}$ x $\frac{1}{8}$ x $\frac{1}{4}$	1
3	00-291221	Gear – Worm (60 Cycle)	1
4	00-070407	Gear – Worm (50 Cycle)	1
5	00-012754	Washer	1
6	00-012757	Spring – Shock Absorber	1
7	00-873057	Deflector – Grease	1
8	SD-015-38	Self-Tapping Screw 6-32 x $\frac{3}{8}$ Phil. Pan Hd., Type TT	2
9	00-271612-00002	Switch – Electronic Start (50/60 Hz.)	1
10	00-873203-00002	Block – Terminal	1
11	SD-015-38	Self-Tapping Screw 6-32 x $\frac{3}{8}$ Phil. Pan Hd., Type TT	1
12	00-873125	Bracket – Component Mounting	1
13	SD-015-39	Self-Tapping Screw 8-32 x $\frac{1}{4}$ Phil. Pan Hd., Type TT	2
14	WL-008-07	Lockwasher #8 Internal Shakeproof	2
15	00-087714-042-1	Relay (2 Pole) (115 V.)	1
16	00-087714-042-3	Relay (2 Pole) (240 V.)	1
17	SD-015-38	Self-Tapping Screw 6-32 x $\frac{3}{8}$ Phil. Pan Hd., Type TT	2
18	00-873061-00001	Motor Assy. (60 Hz.)	1
19	00-837061-00003	Motor Assy. (50 Hz.)	1
20	00-113703	Cable Tie	2
21	00-070487-00025	Capacitor – Motor Start	1

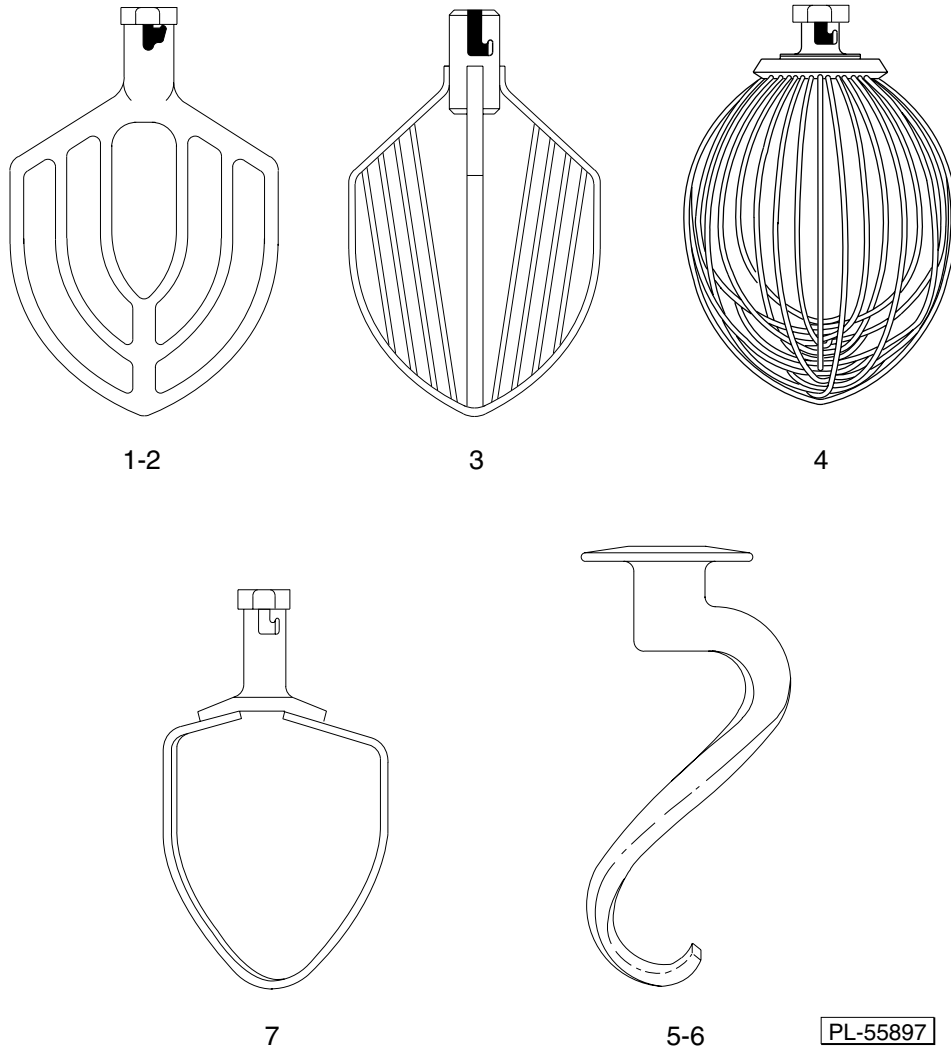


PL-55483

TRANSMISSION GEAR UNIT

TRANSMISSION GEAR UNIT

ILLUS.	PART NO.	NAME OF PART	AMT.
	PL-55483		
1	NS-032-29	Stop Nut 1/2-20 Flexloc	1
2	WS-008-13	Washer – Retaining	1
3	BB-020-18	Ball Bearing – N.D. #77503	1
4	WS-010-18	Washer – Bearing Shim (0.002" Thk.)	AR
5	WS-010-19	Washer – Bearing Shim (0.003" Thk.)	AR
6	WS-010-20	Washer – Bearing Shim (0.010" Thk.)	AR
7	00-107145	Spacer – Planetary Shaft	1
8	00-124730	Sleeve – Roller Clutch Drive	1
9	00-109070-00002	Key	1
10	00-124729	Clutch – Roller	10
11	00-124732	Spring – Roller	10
12	00-124752	Gear – Slow Speed (46T)	1
13	00-124733-00002	Gear – Bevel (46T)	1
14	00-124744	Gear – Clutch (29T)	1
15	00-012695	Bearing – Clutch Gear	1
16	00-012430-00059	Key – Clutch Sleeve	2
17	00-070035-00001	Sleeve – Clutch	1
18	00-012695	Bearing – Clutch Gear	1
19	00-124743	Gear – Lower Clutch (38T)	1
20	00-012723	Spacer – Lower	1
21	BB-020-06	Ball Bearing – N.D. #7504	1
22	00-012430-00017	Key	1
23	00-124734	Shaft – Planetary	1
24	00-437342	Spacer – Bearing	1
25	00-114695	Seal – Oil	1
26	00-124946	Washer – Fiber	1
27	WS-030-83	Washer – Retaining (STL)	1
28	00-010928-00002	Nut – Special	1
29	00-024715-00003	Acorn Nut 1/2-20	1
30	00-012710	Nut – Retaining	2
31	WS-006-36	Washer – Retaining	1
32	BB-005-02	Ball Bearing – N.D. #7500	1
33	00-012744	Spacer – Upper	1
34	00-291236	Shaft – Transmission (15T)	1
35	00-124736	Gear (32T)	1
36	00-435297	Key	1
37	00-012697	Spacer – Lower	1
38	00-435297	Key	1
39	00-124760	Gear (23T)	1
40	RR-004-19	Retaining Ring	1
41	BB-005-01	Ball Bearing – N.D. #3200	1
42	SL-002-08	Spring – Preloading (N.D. #S-10-B)	1
43	00-012710	Nut – Retaining	2
44	WS-006-36	Washer – Retaining	1
45	BB-005-02	Ball Bearing – N.D. #7500	1
46	00-124745	Washer	1
47	00-124765-00001	Spacer – Gear	1
48	00-124748	Gear (15T)	1
49	00-012430-00004	Key	1
50	00-124751-00003	Worm Wheel & Bushing Assy. (60 Hz.)	1
51	00-124749-00002	Worm Wheel & Bushing Assy. (50 Hz.)	1
52	00-291128	Shaft – Worm Wheel	1
53	BB-005-01	Ball Bearing – N.D. #3200	1
54	SL-002-08	Spring – Preloading (N.D. #S-10-B)	1
	00-292799-00002	Planetary Shaft Assy. (Incls. Items 7, 8, 9, 12 thru 20, & 23)	1
	00-292800	Transmission Shaft Assy. (Incls. Items 33 thru 40)	1
	00-292798-00001	Worm Wheel Shaft Assy. (60 Hz.) (Incls. Items 46 thru 50, & 52)	1
	00-292798-00002	Worm Wheel Shaft Assy. (50 Hz.) (Incls. Items 46 thru 49, 51, & 52)	1



PL-55897

AGITATORS

ILLUS.	PART NO.	NAME OF PART	AMT.
PL-55897			
1	00-275459	"B" Flat Beater	1
2	00-275559	"B" Flat Beater (SST)	1
3	00-295165	"C" Wing Whip	1
4	00-275897	"D" Wire Whip (SST)	1
5	00-477521	"ED" Dough Arm	1
6	00-295119	"E" Dough Arm	1
7	00-295036	"P" Pastry Knife	1