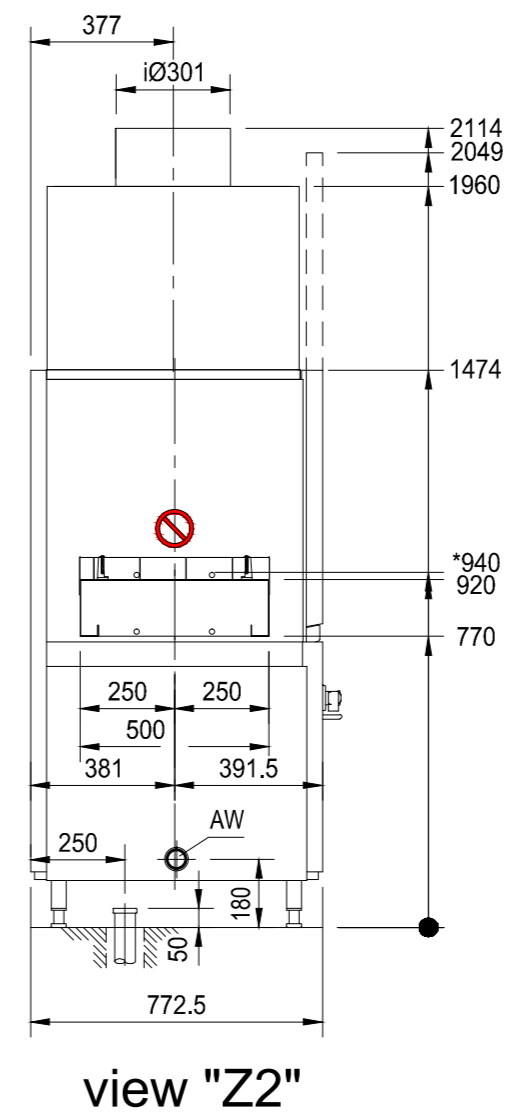
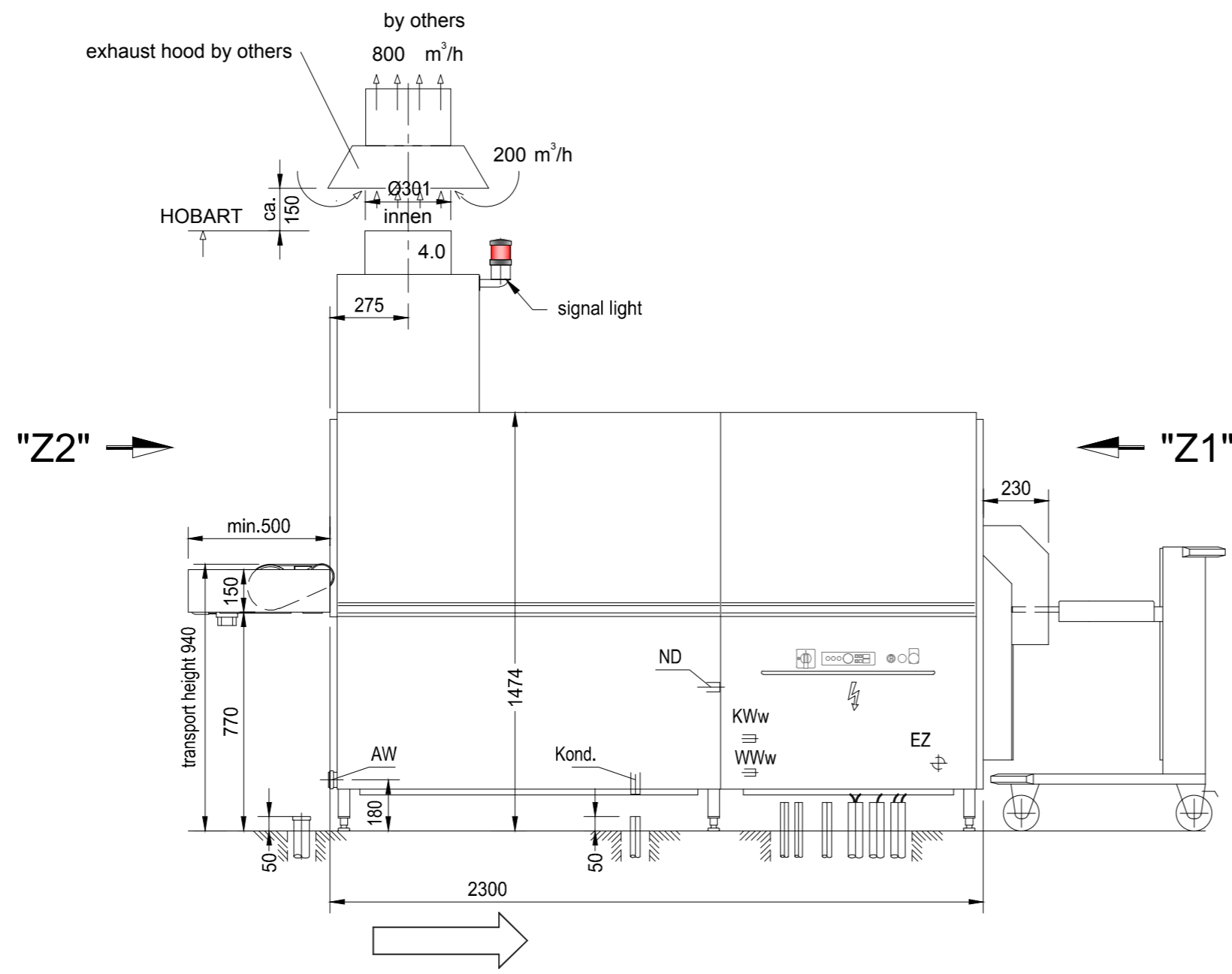
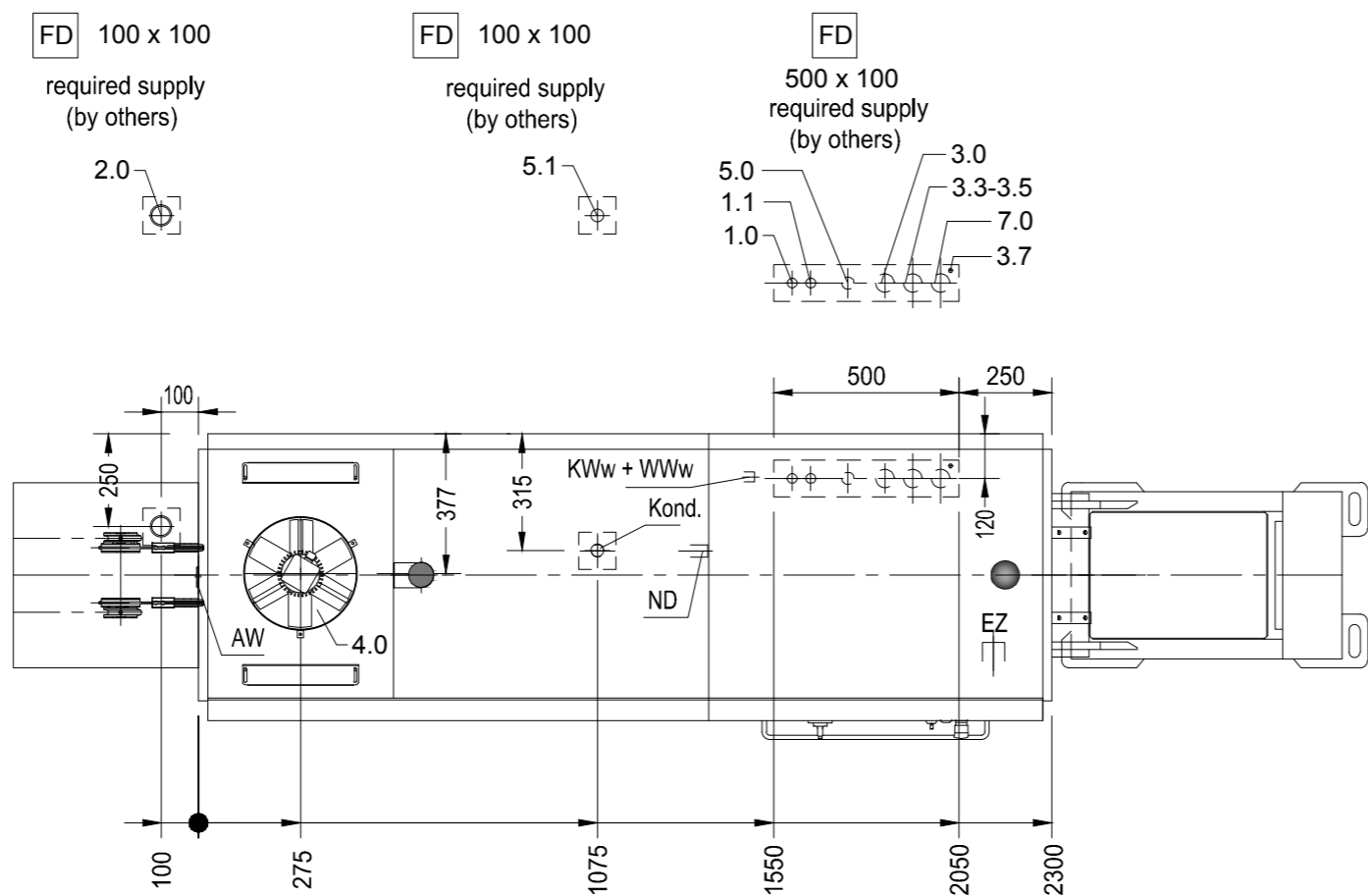


view "Z1"



view "Z2"



FTT; C12 L/R - steam

Machine-Type:	Tray Washer		Heating:	Steam
Model:	FTT	FTT C12	Operation:	Left / Right
Usable-Width:	500	Usable-Height:	40	Main-Switch: Built in Machine
Chemical	conduit for chemical supply			Dimension: DN50, Position in mm: 100mm AFFL
Heating	Consumption	Volume	Temp.	Rel. Humidity, Pressure, Dimension, Connection, Position in mm
5.1	Condensate	42 kg/h	33°C	90-98%, ca. 0 Pa, DN25, G1" male, 50mm AFFL
5.0	Steam	87640 kJ/h		DN25, G1 (welding fitting), 100mm AFFL
Exhaust Volume: 800 m³/h, Temp: 33°C, Rel. Humidity: 90-98%, Pressure: ca. 0 Pa, Ø301 (internal)				
Exhaust Control and Data-Line				
3.7	Equipotential	min. 1x6mm² provided by customer, 3m reserve		
3.5	Malfunction-Sensor	5x1,5 mm², STL, 3m reserve		
3.4	Exhaust	3x1,5 mm², STL, 3m reserve		
3.3	Dosage-System	7x1,5 mm², STL, 3m reserve		
Exhaust	Voltage	Frequency	Supply	Fuse, Cross-Section, Power, Extended-Length
3.0	400 V	50 HZ	3-N-PE	3x25 A, 5x4 mm², 10,0 kW, EZ, 3m reserve
Water	Consumption	Temp.	Hardness	Conductance, Dimension, Connection, Position in mm
2.0	Drain (Siphon provided by customer)			DN50, Drain pipe, 50mm AFFL
1.1	WWw	105 l (Filling)	50-60 °C	max.7" d (1,2mm/l), 150-400µS/cm, DN20, G3/4" male, 100mm AFFL
1.0	KWw	200 l/h	12 °C	0-3" d (0,5mmol/l), 80-120µS/cm, DN20, G3/4" male, 100mm AFFL
Water-Flow-Pressure provided by customer min.1,5 bar / 22 psi				
Heat-Radiation (thermal output to the room)				
washware 6,5 kW		latent 2 kW		sensibel 4,6 kW

HOBART GENERAL INFORMATION

Installation: All installations should always comply with all national and local codes of practice.

Exhaust: A frost-protection flap is recommended if the exhaust air from the machine is exterior ducted.

Transport: Minimum measurements of entry doors for machine assembly = outer measurements of largest machine + 300mm in height, + 400mm in width!

Aeration: The ventilation and exhaust for the room must be interpreted according to local by-laws

Heat pump: Proper working order can only be ensured by room temperature above 18°C.

Shut-off valves: The shut-off valves for rinse water, tank filling or demi-rinse are supplied by others.

Control- and data lines: We recommend a conduit for control-lines in the area of the electrical connection.

Washing result: A spotless cleaning results can be achieved only with low mineral content of the rinse water. We recommend a conductance of about 80µS/cm.

Floor drain: Splash floor drains should be installed for general cleaning purpose.

Steam- connections: The in-house steam-flow piping must be equipped with condensate drainage prior to the HOBART steam-connection. The in-house condensate piping must be pressure less and able to absorb all HOBART condensate.

HOBART GENERAL LEGEND

AW = drain water (CNS)	KW = cold water	üOKFF = above finished floor
Dat = dataline	KWw = cold water soft	UK = lower edge
EZ = power line 230V / 400V	LR = conduit Ø	VEW = demineralized water
FD = floor opening	CNS = stainless steel (inox)	WD = wall opening
HW-VL = hot water flow	MK = supply channell	WS = wall slot
HW-RL = hot water return	PE = equipotential conductor	WW = warm water
ND = low pressure steam	STL = control line	WWw = warm water soft
Kond. = condensate	KB = cored hole Ø	

HOBART HOBART GmbH - Robert-Bosch-Straße17 - 77656 Offenburg, Germany
Tel.: +49(0)781.600-0 - Fax.: +49(0)781.600-2319 - www.hobart.de

Index Änderungen / Changes Datum / Date Name

Das Urheberrecht an dieser Zeichnung verbleibt bei der HOBART GmbH. Jede nicht von uns schriftlich genehmigte Benutzung, Verfielfältigung, Überlassung an Dritte ist strafbar und macht schadensersatzpflichtig. This document contains proprietary and confidential data of HOBART GmbH. No disclosure, reproduction or use of any part thereof may be made without written permission of HOBART GmbH.

HOBART Angebot Quotation Auftrag Order

Datum / Date: 2012 / AUGUST Gezeichnet / Drawn by: WH Geprüft / Checked by: W: Neumaier Projectmanager: Project: TRAY WASHER FTT HEAT RECOVERY SYSTEM C12 STEAM HEATED Maßstab / Scale: 1:20 Order-No.: Zeichnungsnummer / Drawing-No.: 11 FTT C12 - steam LR